

| PART NUMBER | REVISION | DESCRIPTION                      | FEED TYPE  |
|-------------|----------|----------------------------------|------------|
| 2151453-1   | C        | FINE CRIMP HEIGHT ADJUST         | MECHANICAL |
| 2151453-2   | C        | FINE CRIMP HEIGHT ADJUST         | PNEUMATIC  |
| 7-2151453-1 | C        | MECHANICAL AND CRIMP TOOLING KIT | MECHANICAL |
| 7-2151453-2 | C        | PNEUMATIC AND CRIMP TOOLING KIT  | PNEUMATIC  |
| 7-2151453-7 | A        | CRIMP TOOLING KIT                | -          |

ATLANTIC VERSION TERMINATOR INTERFACE ADAPTER



| APPLICATOR DATA |                |      |
|-----------------|----------------|------|
| CRIMP           | SIZE           | TYPE |
| WIRE            | 2.03 mm [.080] | F    |
| INSUL           | 2.54 mm [.100] | F    |

APPLICATOR INSTRUCTIONS 408-35042

|   |   |
|---|---|
| TERMINAL DATA: DELPHI TERMINAL DELPHI CRIMP SPECIFICATION                         |   |
| TERMINAL NAME: TAXI TERMINAL FEMALE, METRI-PACK 150.2                             |   |
| WIRE STRIP LENGTH<br>3.96-4.22 mm [.156-.166 IN]                                  | INSULATION DIAMETER RANGE<br>Ø1.85-2.40 mm [.073-.094 IN] |
| TERMINAL APPLICATION SPECIFICATION<br>DELPHI CRIMP INFORMATION SHEET PAGE 5 OF 41 |   |
| TERMINALS APPLIED   |   |
| TE TERMINAL<br>1949090-1  | DELPHI TERMINAL<br>12124075                               |
| TE TERMINAL<br>1949090-2  | DELPHI TERMINAL<br>12161184                               |

| WIRE SIZE | CRIMP HEIGHT mm [INCH]         | CRIMP HEIGHT REFERENCE SETTING |
|-----------|--------------------------------|--------------------------------|
| 1.00mm2   | 1.30 +/- 0.05 [1.051 +/- .002] | 4.9                            |
| 0.80mm2   | 1.20 +/- 0.05 [1.047 +/- .002] | 5.8                            |

- ⚠ RECOMMENDED SPARE PARTS
- ⚠ REFER TO SUPPLIED INSTRUCTION SHEET FOR CLEANING, LUBRICATION AND STORAGE OF APPLICATOR.
- ⚠ APPLY PART NUMBER 2-23419-6 LOCTITE TO THREADS OF ITEM 242.
- ⚠ CRIMP HEIGHT REFERENCE SETTING WAS THE SETTING USED WHEN THE APPLICATOR WAS QUALIFIED AT THE FACTORY. ADJUSTMENT MAY BE NECESSARY WHEN RUNNING APPLICATOR IN THE FIELD.
- 5. UNLESS SPECIFIED OTHERWISE TORQUE VALUES SHALL BE USED PER DOCUMENT, 101-35000.

**\*WARNING**  
ON INSTALLATION, SET WIRE DISC TO CRIMP HEIGHT REFERENCE SETTING FOR LARGEST WIRE SIZE. CRIMP HEIGHT REFERENCE SETTINGS GREATER THAN THE VALUE SHOWN MAY CAUSE DAMAGE TO THE CRIMP TOOLING, REFER TO THE INSTRUCTION SHEET FOR PROPER SETUP AND ADJUSTMENTS.

**ATLANTIC VERSION**  
Shown on sheets 1 of 4 & 2 of 4  
(Pacific version shown on sheets 3 of 4 & 4 of 4)

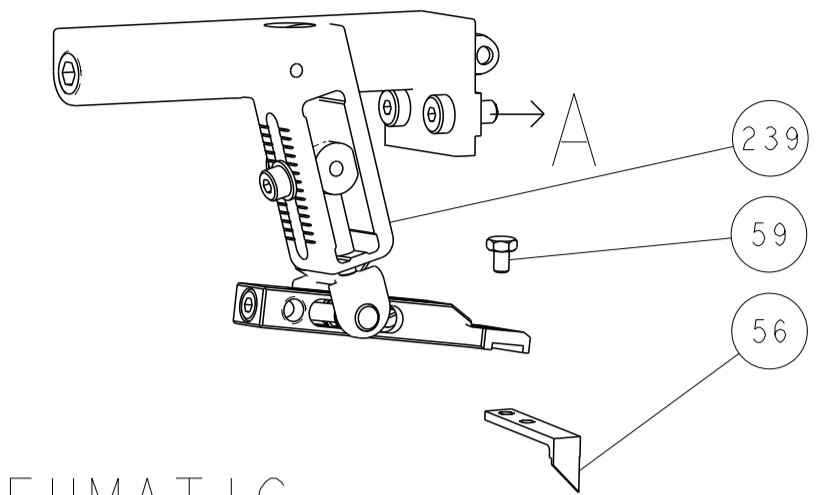
| LOC | DIST | REVISIONS |     |               |           |     |      |
|-----|------|-----------|-----|---------------|-----------|-----|------|
| A   | 66   | P         | LTN | DESCRIPTION   | DATE      | OWN | APVD |
|     |      | A         |     | RELEASED      | 15MAY2014 | RK  | GB   |
|     |      | B         |     | ECR-18-006620 | 30APR2018 | MEH | JDG  |
|     |      | C         |     | ECR-23-162541 | 03JAN2023 | LG  | RK   |

|   |     |     |     |     |             |                                     |         |
|---|-----|-----|-----|-----|-------------|-------------------------------------|---------|
| - | 1   | -   | 1   | -   | 2119641-1   | FEED CAM, AIR FEED                  | 248     |
| - | 1   | 1   | 1   | 1   | 2119082-4   | CAM, SNAIL, INSULATION ADJUSTMENT   | 244     |
| - | 1   | 1   | 1   | 1   | 2079764-1   | WASHER, WAVE SPRING, CREST-TO-CREST | 243     |
| - | 1   | 1   | 1   | 1   | 2119083-1   | RETAINER, INSULATION DIAL           | 242     |
| - | 1   | 1   | 1   | 1   | 7-18023-7   | SCR, SKT HD CAP M3 X 4.0            | 241     |
| - | -   | 1   | -   | 1   | 2119580-1   | MECHANICAL FEED ASSEMBLY            | 239     |
| - | 1   | -   | 1   | -   | 2844940-1   | AIR FEED MODULE                     | 238     |
| - | REF | REF | REF | REF | 994970-2    | COUNTER, MAGNETIC                   | 164     |
| - | 1   | 1   | 1   | 1   | 2844908-1   | SCREW, LOCKING                      | 99      |
| - | 1   | 1   | 1   | 1   | 2844907-1   | POST, LOCKING                       | 98      |
| - | 1   | 1   | 1   | 1   | 455888-6    | SPACER, CRIMPER                     | 82      |
| - | 1   | 1   | 1   | 1   | 1803607-3   | DOCUMENTATION PACKAGE               | 71      |
| - | 1   | 1   | 1   | 1   | 2119791-9   | DEPRESSOR, WIRE                     | 70      |
| - | 1   | 1   | 1   | 1   | 2119740-1   | TAG IDENTIFICATION                  | 67      |
| - | 2   | 2   | 2   | 2   | 2168078-1   | SCREW, DRIVE, RH, RoHS, 2 x .188    | 66      |
| - | 1   | 1   | 1   | 1   | 2168083-2   | SCR, SKT HD CAP, RoHS, M4 X 8.0     | 60      |
| - | 1   | 1   | 1   | 1   | 5-18022-5   | SCR, HEX HD CAP, M4 X 6.0           | 59      |
| - | 1   | 1   | 1   | 1   | 1338685-1   | PAWL, FEED                          | 56      |
| - | 4   | 4   | 4   | 4   | 2168083-3   | SCR, SKT HD CAP, RoHS, M4 X 12.0    | 54      |
| - | 1   | 2   | 1   | 2   | 18023-9     | SCR, SKT HD CAP M4 X 6.0            | 49      |
| - | -   | 1   | -   | 1   | 2119652-1   | FEED CAM, PRE FEED                  | 48      |
| - | -   | 1   | -   | 1   | 2119653-1   | FEED CAM, POST FEED                 | 47      |
| - | 1   | 1   | 1   | 1   | 1803583-9   | APPLICATOR BASIC ASSEMBLY, SF       | 46      |
| - | 1   | 1   | 1   | 1   | 1803515-1   | RAM ASSEMBLY, SF ATLANTIC           | 44      |
| - | 1   | 1   | 1   | 1   | 1803602-1   | SCR, BHSC, RoHS (M8 X 25)           | 41      |
| - | 1   | 1   | 1   | 1   | 1752356-1   | SUPPORT, TERMINAL                   | 34      |
| - | 2   | 2   | 2   | 2   | 2079383-5   | SCR, BHSC, RoHS (M4 X 20)           | 33      |
| - | 2   | 2   | 2   | 2   | 2-2844962-6 | SPACER, CYLINDRICAL, STRIP GUIDE    | 30      |
| - | 1   | 1   | 1   | 1   | 2844992-1   | ASSEMBLY, STRIP GUIDE               | 29      |
| - | 1   | 1   | 1   | 1   | 455888-3    | SPACER, CRIMPER                     | 28      |
| - | 1   | 1   | 1   | 1   | 1320928-2   | STRIP GUIDE                         | 24      |
| - | 1   | 1   | 1   | 1   | 2168083-2   | SCR, SKT HD CAP, RoHS, M4 X 8.0     | 21      |
| - | 2   | 2   | 2   | 2   | 1-18028-2   | WASHER, FLAT, REG M4                | 20      |
| - | 1   | 1   | 1   | 1   | 2119533-1   | STRIPPER, SIDE FEED                 | 19      |
| - | 1   | 1   | 1   | 1   | 2119806-1   | INSERT, SHEAR                       | 13      |
| - | 1   | 1   | 1   | 1   | 3-22280-3   | SPRING, COMPRESSION                 | 12      |
| - | 1   | 1   | 1   | 1   | 1-356885-4  | STOP, SHEAR                         | 11      |
| - | 1   | 1   | 1   | 1   | 2119805-1   | SHEAR HOLDER, FRONT                 | 10      |
| - | 1   | 1   | 1   | 1   | 1803095-1   | FLOATING SHEAR, FRONT               | 9       |
| - | 1   | 2   | 2   | 1   | 1-1633139-2 | ANVIL, COMBINATION                  | 8       |
| - | -   | -   | -   | -   | -           | -                                   | 7       |
| - | -   | -   | -   | -   | -           | -                                   | 6       |
| - | 1   | 1   | 1   | 1   | 2119757-8   | DEPRESSOR, SHEAR                    | 5       |
| - | 1   | 1   | 1   | 1   | 1-238011-6  | BLOCK, CRIMPER SPACER               | 4       |
| - | 1   | 2   | 2   | 1   | 5-2119582-3 | CRIMPER, INSULATION F PREMIUM       | 3       |
| - | 1   | 1   | 1   | 1   | 455888-1    | SPACER, CRIMPER                     | 2       |
| - | 1   | 2   | 2   | 1   | 1-456405-5  | CRIMPER, WIRE PREMIUM               | 1       |
| - | 77  | -72 | -71 | -2  | -1          | PART NO                             | ITEM NO |
| - | -   | -   | -   | -   | -           | DESCRIPTION                         | ITEM NO |

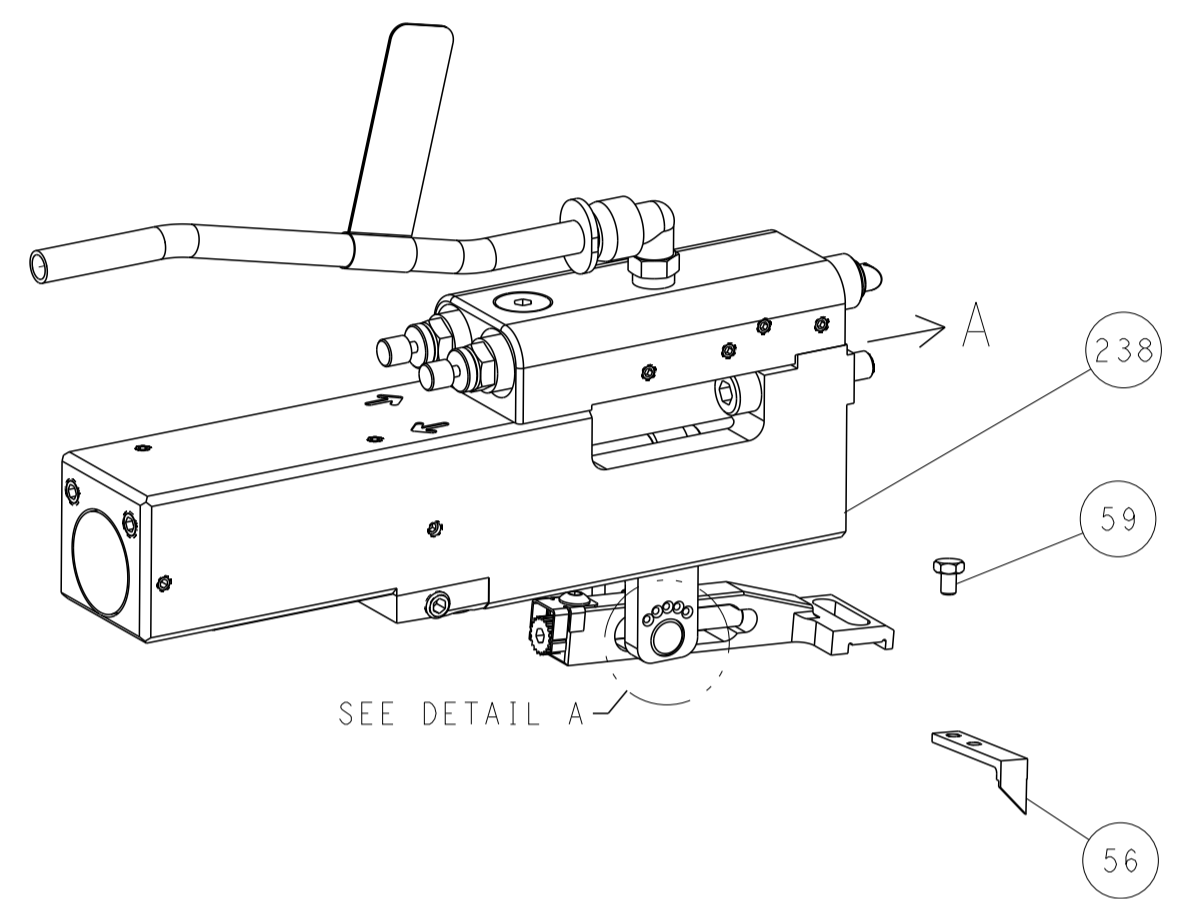
|   |  |   |   |
|---|--|---|---|
| <small>THIS DRAWING IS UNPUBLISHED. IT IS THE PROPERTY OF TYCO ELECTRONICS CORPORATION. IT IS TO BE KEPT IN CONFIDENTIALITY AND NOT TO BE REPRODUCED OR TRANSMITTED IN ANY FORM OR BY ANY MEANS, ELECTRONIC OR MECHANICAL, INCLUDING PHOTOCOPYING, RECORDING, OR BY ANY INFORMATION STORAGE AND RETRIEVAL SYSTEM. PERMISSION TO REPRODUCE THIS DRAWING IN WHOLE OR IN PART IS GRANTED BY TYCO ELECTRONICS CORPORATION TO THE EXTENT THAT IT IS NECESSARY FOR THE PRODUCTION OF EQUIPMENT OR FOR THE REPAIR OF EQUIPMENT. THIS PERMISSION IS LIMITED TO THE ORIGINAL DRAWING AND DOES NOT CONSTITUTE AN ENDORSEMENT OF THE EQUIPMENT OR THE REPAIR WORK.</small> |  | DWN<br>C. CHEN<br>CHK<br>S. XI<br>APVD<br>J. CRUZ<br>DATE<br>04JUL2012  | TE Connectivity<br>Harrisburg, PA 17105-3608  |
| DIMENSIONS:<br>mm<br>   |  | TOLERANCES UNLESS OTHERWISE SPECIFIED:<br>0 PLC ±<br>1 PLC ±<br>2 PLC ±<br>3 PLC ±<br>4 PLC ±<br>ANGLES ±<br>FINISH | NAME<br>Ocean Side Feed Applicator<br>SIZE<br>A1<br>CAGE CODE<br>00779<br>DRAWING NO<br>2151453<br>RESTRICTED TO<br>Customer Accessible Production Drawing<br>SCALE<br>1:2<br>SHEET<br>1<br>OF<br>4<br>REV<br>C |

| LOC | DIST | REVISIONS   |      |     |      |
|-----|------|-------------|------|-----|------|
| P   | LTN  | DESCRIPTION | DATE | OWN | APVD |
| A   | 66   | SEE SHEET 1 | -    | -   | -    |
|     |      |             |      |     |      |
|     |      |             |      |     |      |

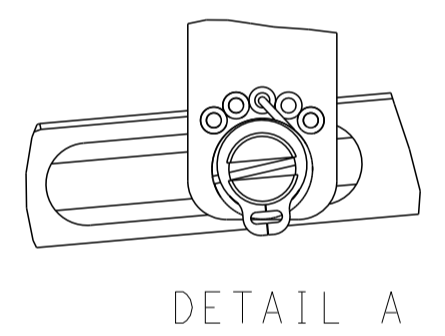
# FEED TYPE MECHANICAL



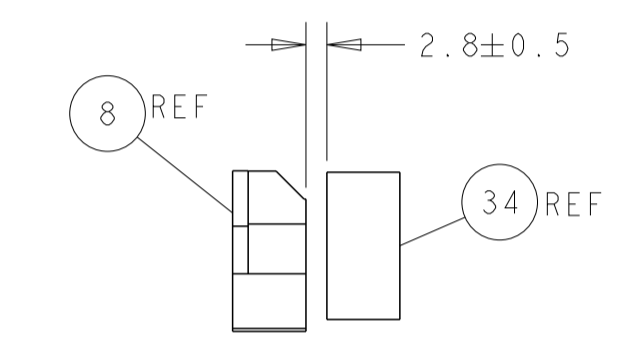
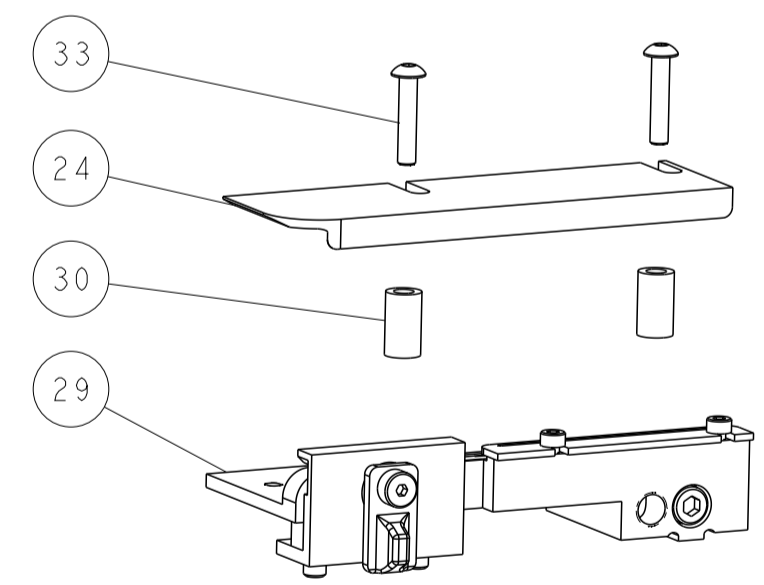
## PNEUMATIC



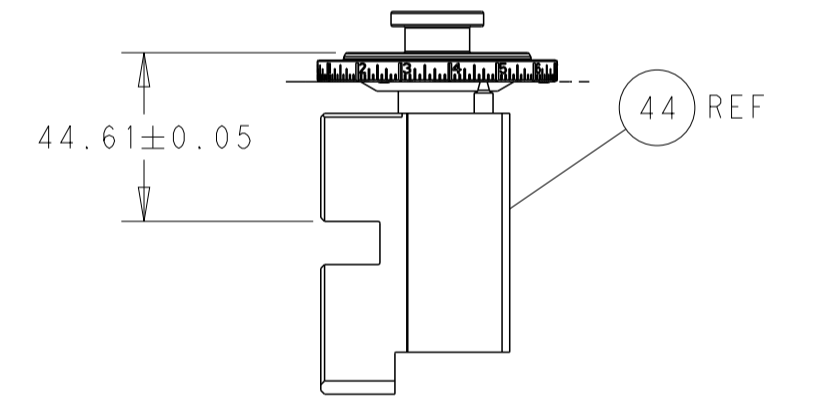
## FEED SPRING SETTING POSITION (SHOWN FROM REAR SIDE)



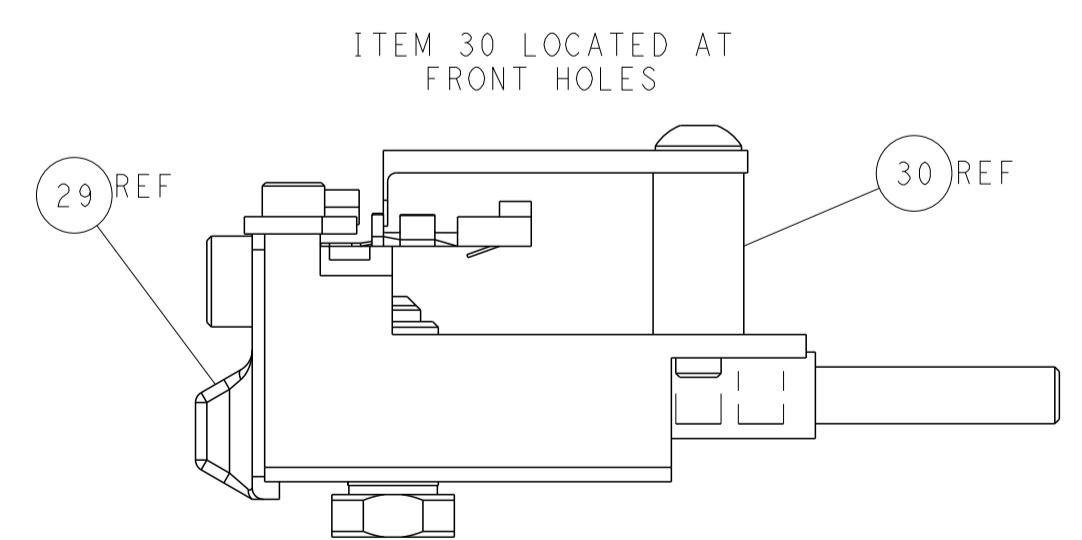
DETAIL A



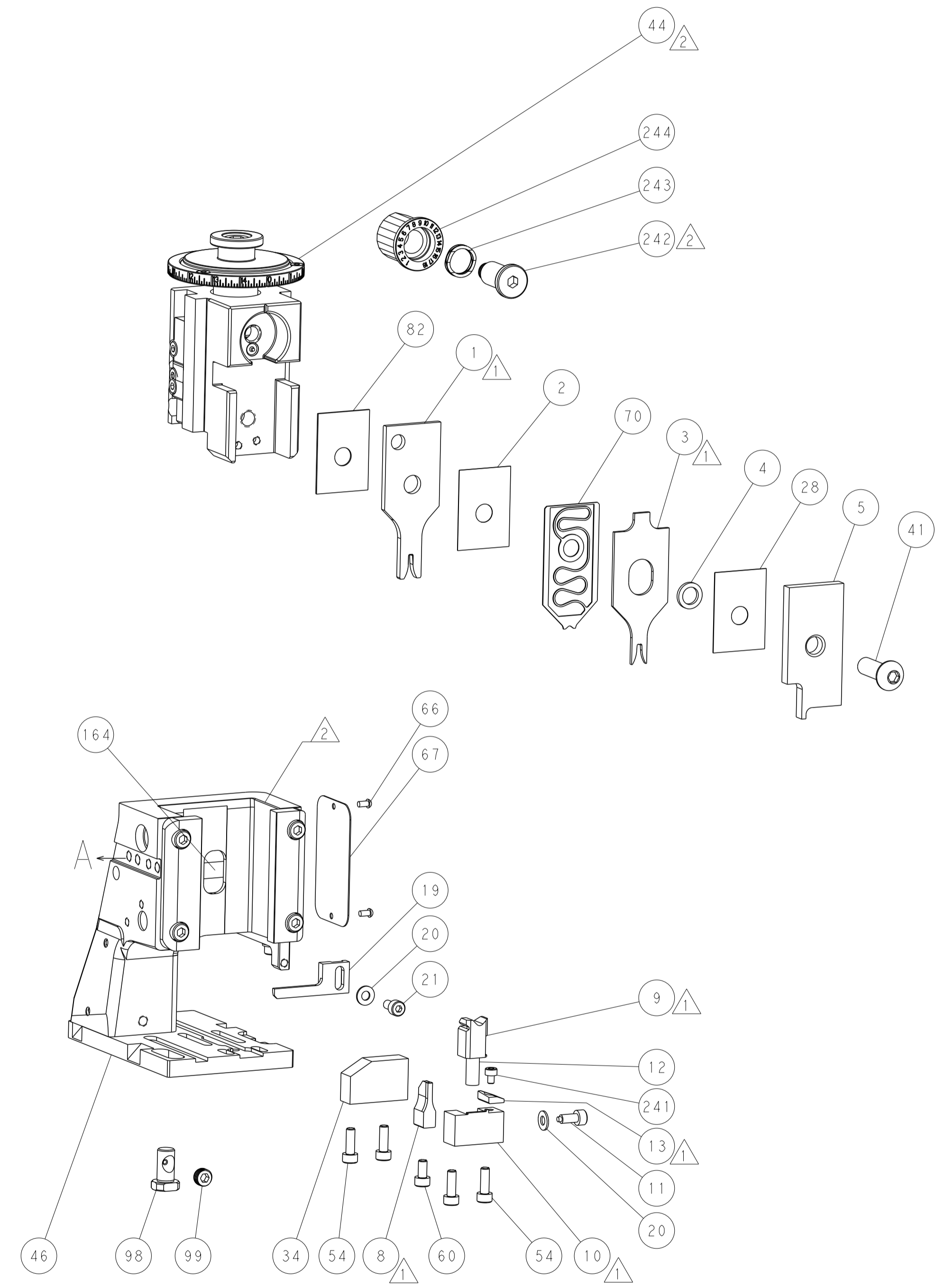
TERMINAL SUPPORT LOCATION



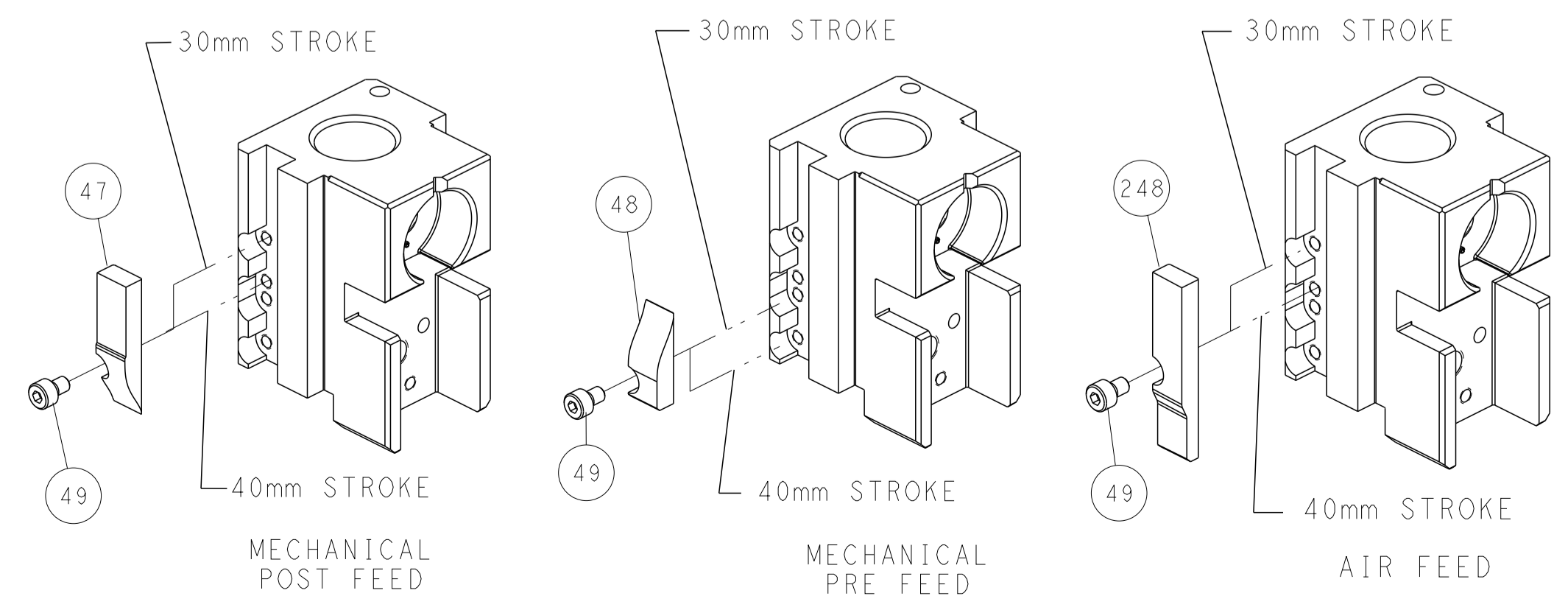
RAM SET-UP



FEED TRACK POSITION GUIDE BY INSULATION BARREL



# CAM POSITIONS



**ATLANTIC VERSION**  
 Shown on sheets 1 of 4 & 2 of 4  
 (Pacific version shown on sheets 3 of 4 & 4 of 4)

|             |         |  |         |                        |         |   |  |
|-------------|---------|--|---------|------------------------|---------|---|--|
| DIMENSIONS: |         | TOLERANCES UNLESS OTHERWISE SPECIFIED: |         | DWN C. CHEN 04JUL2012  |         | TE Connectivity                         |  |
| mm          | 0 PLC ± | 1 PLC ±                                | 2 PLC ± | 3 PLC ±                | 4 PLC ± | Harrisburg, PA 17105-3608               |  |
| MATERIAL:   |         | FINISH:                                |         | CHK S. XI 04JUL2012    |         | NAME Ocean Side Feed Applicator         |  |
|             |         |  |         | APVD J. CRUZ 04JUL2012 |         | SIZE CAGE CODE DRAWING NO RESTRICTED TO |  |
|             |         |  |         | PRODUCT SPEC           |         | A1 00779 ©=2151453                      |  |
|             |         |  |         | APPLICATION SPEC       |         | Customer Accessible Production Drawing  |  |
|             |         |  |         | WEIGHT                 |         | SCALE 1:2 SHEET 2 OF 4 REV C            |  |

| PART NUMBER | REVISION | DESCRIPTION              | FEED TYPE  |
|-------------|----------|--------------------------|------------|
| 2-2151453-1 | C        | FINE CRIMP HEIGHT ADJUST | MECHANICAL |
| 2-2151453-2 | C        | FINE CRIMP HEIGHT ADJUST | PNEUMATIC  |
| 7-2151453-7 | A        | CRIMP TOOLING KIT        | -          |

PACIFIC VERSION TERMINATOR  
 INTERFACE ADAPTER



| APPLICATOR DATA |                |      |
|-----------------|----------------|------|
| CRIMP           | SIZE           | TYPE |
| WIRE            | 2.03 mm [.080] | F    |
| INSUL           | 2.54 mm [.100] | F    |

APPLICATOR INSTRUCTIONS  
 408-35042

|   |  |             |                 |
|---|--|-------------|-----------------|
| TERMINAL DATA: DELPHI TERMINAL  | DELPHI CRIMP SPECIFICATION                               |             |                 |
| TERMINAL NAME: TAXI TERMINAL FEMALE, METRI-PACK 150.2                             |  |             |                 |
| WIRE STRIP LENGTH<br>3.96-4.22 mm [.156-.166 IN]                                  | INSULATION DIAMETER RANGE<br>1.85-2.40 mm [.073-.094 IN] |             |                 |
| TERMINAL APPLICATION SPECIFICATION<br>DELPHI CRIMP INFORMATION SHEET PAGE 5 OF 41 |  |             |                 |
| TERMINALS APPLIED   |  |             |                 |
| TE TERMINAL   | DELPHI TERMINAL  | TE TERMINAL | DELPHI TERMINAL |
| 1949090-1   | 12124075   | 1949090-2   | 12161184        |

| WIRE SIZE | CRIMP HEIGHT mm [INCH]        | CRIMP HEIGHT REFERENCE SETTING |
|-----------|-------------------------------|--------------------------------|
| 1.00mm2   | 1.30 +/- 0.05 [.051 +/- .002] | 4.9                            |
| 0.80mm2   | 1.20 +/- 0.05 [.047 +/- .002] | 5.8                            |

- RECOMMENDED SPARE PARTS
- REFER TO SUPPLIED INSTRUCTION SHEET FOR CLEANING, LUBRICATION AND STORAGE OF APPLICATOR.
- APPLY PART NUMBER 2-23419-6 LOCTITE TO THREADS OF ITEM 242.
- CRIMP HEIGHT REFERENCE SETTING WAS THE SETTING USED WHEN THE APPLICATOR WAS QUALIFIED AT THE FACTORY. ADJUSTMENT MAY BE NECESSARY WHEN RUNNING APPLICATOR IN THE FIELD.
- UNLESS SPECIFIED OTHERWISE TORQUE VALUES SHALL BE USED PER DOCUMENT, 101-35000.

**\*WARNING**  
 ON INSTALLATION, SET WIRE DISC TO CRIMP HEIGHT REFERENCE SETTING FOR LARGEST WIRE SIZE. CRIMP HEIGHT REFERENCE SETTINGS GREATER THAN THE VALUE SHOWN MAY CAUSE DAMAGE TO THE CRIMP TOOLING, REFER TO THE INSTRUCTION SHEET FOR PROPER SETUP AND ADJUSTMENTS.

**PACIFIC VERSION**  
 Shown on sheets 3 of 4 & 4 of 4  
 (Atlantic version shown on sheets 1 of 4 & 2 of 4)

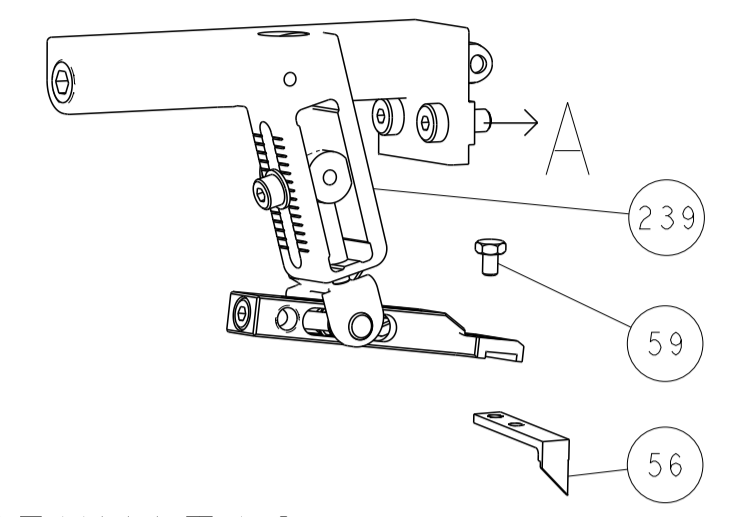
| LOC | DIST | REV | DATE | BY | APPV |
|-----|------|-----|------|----|------|
| A   | 66   |     |      |    |      |

| REV | DATE | BY  | APPV | DESCRIPTION                                   | ITEM NO |
|-----|------|-----|------|---|---------|
| -   | 1    | 1   |      | 2119082-4 CAM, SNAIL, INSULATION ADJUSTMENT   | 244     |
| -   | 1    | 1   |      | 2079764-1 WASHER, WAVE SPRING, CREST-TO-CREST | 243     |
| -   | 1    | 1   |      | 2119083-1 RETAINER, INSULATION DIAL           | 242     |
| -   | 1    | 1   |      | 7-18023-7 SCR, SKT HD CAP M3 X 4.0            | 241     |
| -   | -    | 1   |      | 2119580-1 MECHANICAL FEED ASSEMBLY            | 239     |
| -   | 1    | -   |      | 2844940-1 AIR FEED MODULE                     | 238     |
| -   | REF  | REF |      | 994970-2 COUNTER, MAGNETIC                    | 164     |
| -   | 1    | -   |      | 2119641-2 FEED CAM, AIR FEED                  | 151     |
| -   | 1    | 1   |      | 2168083-8 SCR, SKT HD CAP, RoHS, M4 X 16      | 144     |
| -   | 4    | 4   |      | 2168083-9 SCR, SKT HD CAP, RoHS, M4 X 20      | 143     |
| -   | -    | 1   |      | 2119653-2 FEED CAM, POST FEED                 | 142     |
| -   | 1    | 1   |      | 1-1803583-0 APPLICATOR BASIC ASSEMBLY, SF     | 141     |
| -   | 1    | 1   |      | 1803516-1 RAM ASSEMBLY, SF PACIFIC            | 140     |
| -   | 1    | 1   |      | 2844908-1 SCREW, LOCKING                      | 99      |
| -   | 1    | 1   |      | 2844907-1 POST, LOCKING                       | 98      |
| -   | 1    | 1   |      | 455888-6 SPACER, CRIMPER                      | 82      |
| -   | 1    | 1   |      | 1803607-3 DOCUMENTATION PACKAGE               | 71      |
| -   | 1    | 1   |      | 2119791-9 DEPRESSOR, WIRE                     | 70      |
| -   | 1    | 1   |      | 2119740-1 TAG, IDENTIFICATION                 | 67      |
| -   | 2    | 2   |      | 2168078-1 SCREW, DRIVE, RH, RoHS, 2 x .188    | 66      |
| -   | 1    | 1   |      | 5-18022-5 SCR, HEX HD CAP, M4 X 6.0           | 59      |
| -   | 1    | 1   |      | 1338685-1 PAWL, FEED                          | 56      |
| -   | 1    | 2   |      | 18023-9 SCR, SKT HD CAP M4 X 6.0              | 49      |
| -   | -    | 1   |      | 2119652-1 FEED CAM, PRE FEED                  | 48      |
| -   | 1    | 1   |      | 1803602-1 SCR, BHSC, RoHS (M8 X 25)           | 41      |
| -   | 1    | 1   |      | 1752356-1 SUPPORT, TERMINAL                   | 34      |
| -   | 2    | 2   |      | 2079383-5 SCR, BHSC, RoHS (M4 X 20)           | 33      |
| -   | 2    | 2   |      | 2-2844962-6 SPACER, CYLINDRICAL, STRIP GUIDE  | 30      |
| -   | 1    | 1   |      | 2844992-1 ASSEMBLY, STRIP GUIDE               | 29      |
| -   | 1    | 1   |      | 455888-3 SPACER, CRIMPER                      | 28      |
| -   | 1    | 1   |      | 1320928-2 STRIP GUIDE                         | 24      |
| -   | 1    | 1   |      | 2168083-2 SCR, SKT HD CAP, RoHS, M4 X 8.0     | 21      |
| -   | 2    | 2   |      | 1-18028-2 WASHER, FLAT, REG M4                | 20      |
| -   | 1    | 1   |      | 2119533-1 STRIPPER, SIDE FEED                 | 19      |
| -   | 1    | 1   |      | 2119806-1 INSERT, SHEAR                       | 13      |
| -   | 1    | 1   |      | 3-22280-3 SPRING, COMPRESSION                 | 12      |
| -   | 1    | 1   |      | 1-356885-4 STOP, SHEAR                        | 11      |
| -   | 1    | 1   |      | 2119805-1 SHEAR HOLDER, FRONT                 | 10      |
| -   | 1    | 1   |      | 1803095-1 FLOATING SHEAR, FRONT               | 9       |
| -   | 1    | 1   |      | 2-1633139-2 ANVIL, COMBINATION                | 8       |
| -   | -    | -   |      | -   | 7       |
| -   | -    | -   |      | -   | 6       |
| -   | 1    | 1   |      | 2119757-8 DEPRESSOR, SHEAR                    | 5       |
| -   | 1    | 1   |      | 1-238011-6 BLOCK, CRIMPER SPACER              | 4       |
| -   | 1    | 1   |      | 5-2119582-3 CRIMPER, INSULATION F PREMIUM     | 3       |
| -   | 1    | 1   |      | 455888-1 SPACER, CRIMPER                      | 2       |
| -   | 1    | 1   |      | 1-456405-5 CRIMPER, WIRE PREMIUM              | 1       |

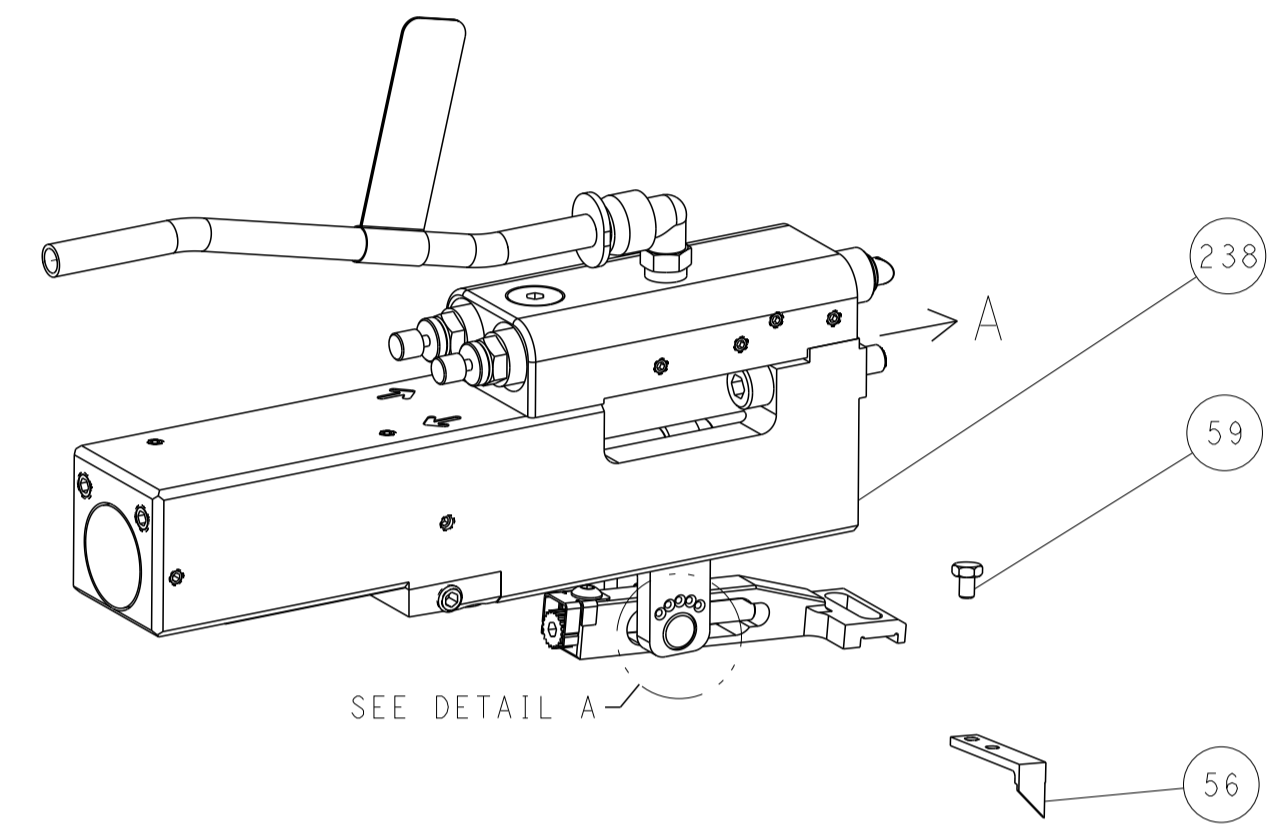
|   |  |   |  |  |  |                                    |  |
|---|--|---|--|--|--|------------------------------------|--|
| DIMENSIONS: mm<br>0 PLC ±<br>1 PLC ±<br>2 PLC ±<br>3 PLC ±<br>4 PLC ±<br>ANGLES ±<br>FINISH ± |  | TOLERANCES UNLESS OTHERWISE SPECIFIED:<br>0 PLC ±<br>1 PLC ±<br>2 PLC ±<br>3 PLC ±<br>4 PLC ±<br>ANGLES ±<br>FINISH ± |  | DWN C. CHEN 04JUL2012<br>CHK S. XI 04JUL2012<br>APVD J. CRUZ 04JUL2012 |  | NAME<br>Ocean Side Feed Applicator |  |
| MATERIAL  |  | WEIGHT  |  | SCALE  |  | SHEET 3 OF 4                       |  |
| Customer Accessible Production Drawing  |  | 00779   |  | 2151453  |  | REV C                              |  |

| LOC | DIST | REVISIONS |     |             |      |     |      |
|-----|------|-----------|-----|-------------|------|-----|------|
| A   | 66   | P         | LTN | DESCRIPTION | DATE | DWN | APVD |
| -   | -    | -         | -   | SEE SHEET 1 | -    | -   | -    |

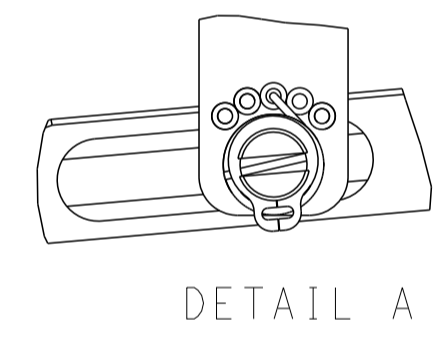
# FEED TYPE MECHANICAL



## PNEUMATIC

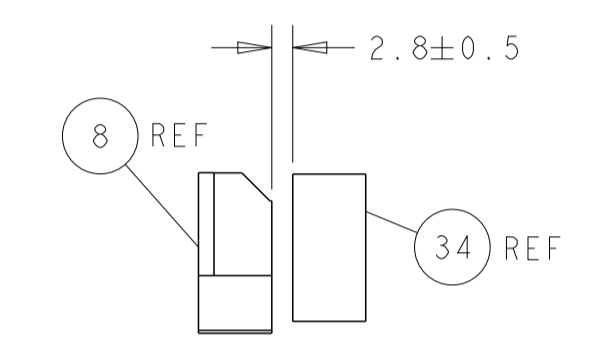
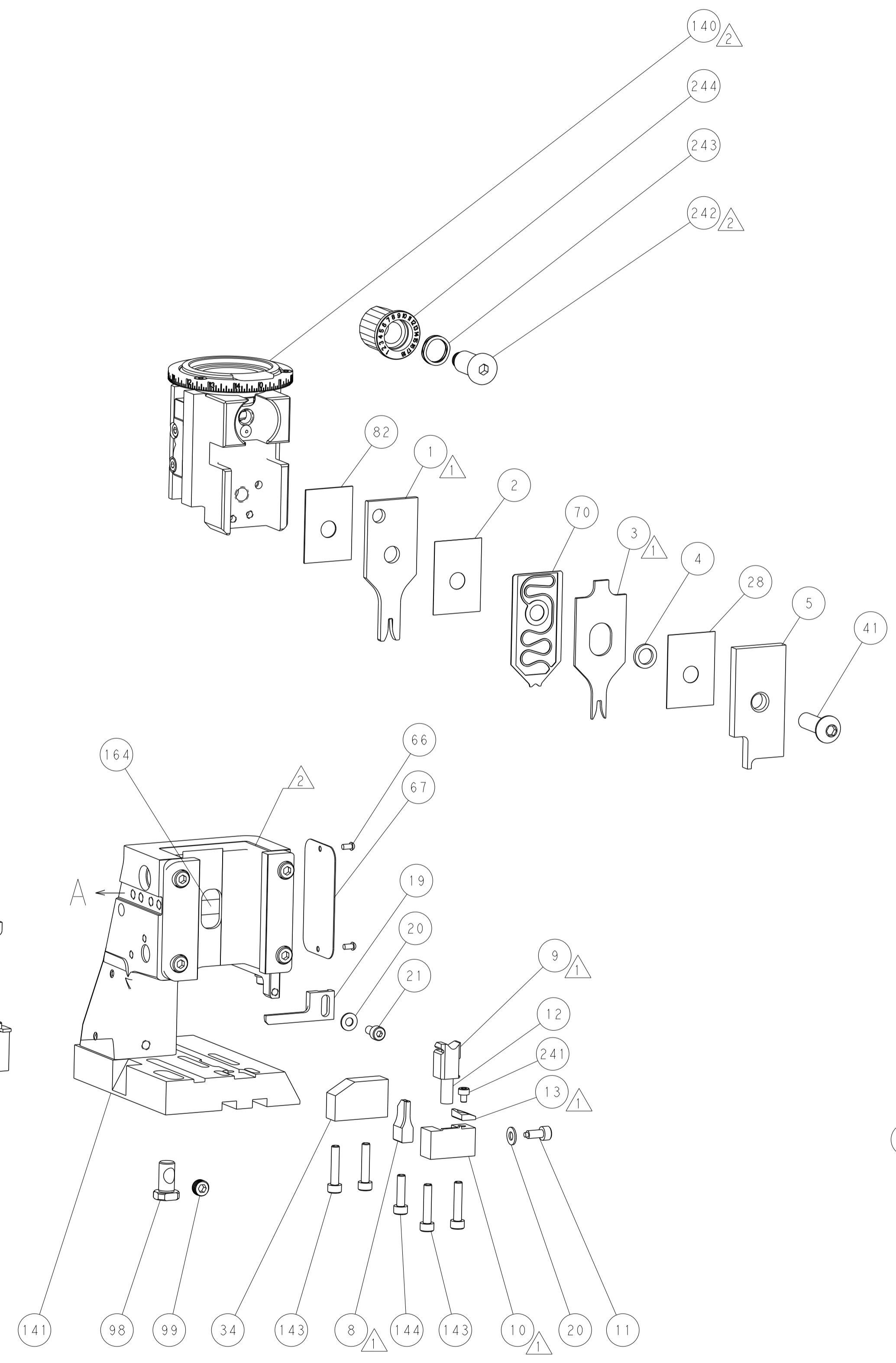
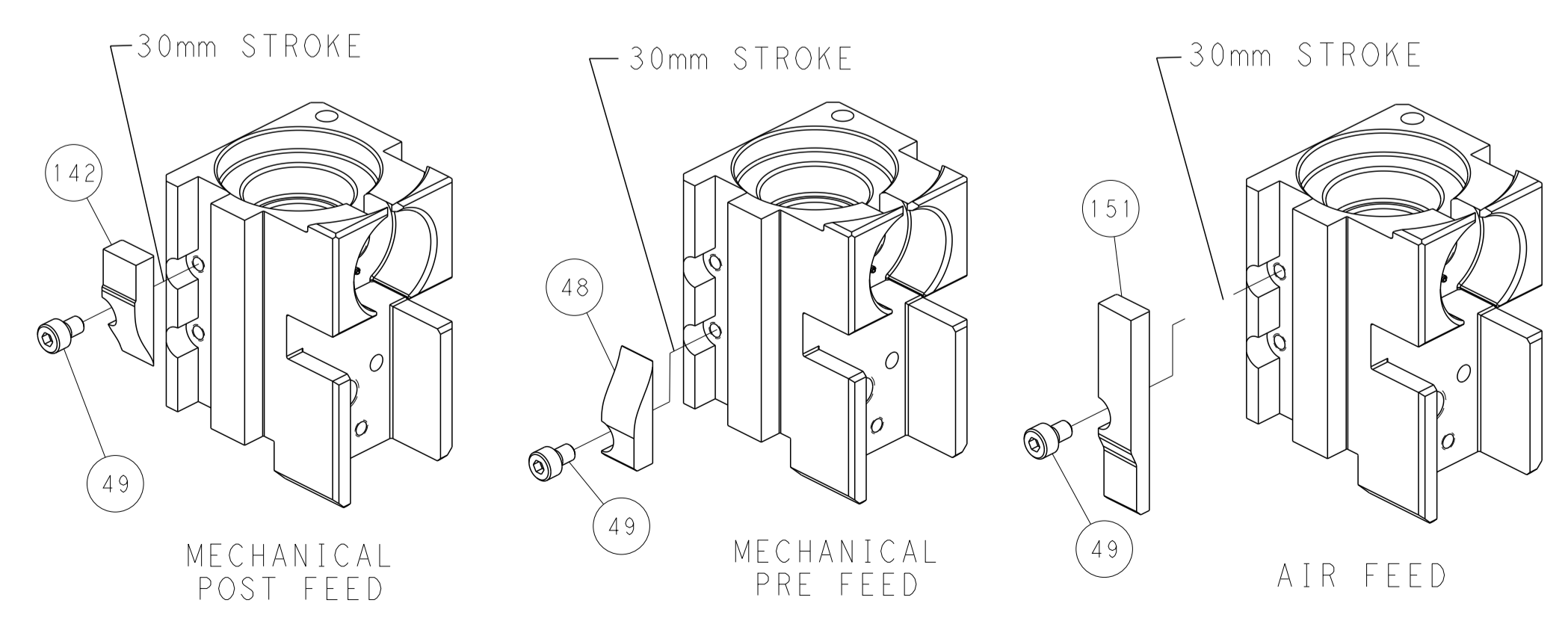


### FEED SPRING SETTING POSITION (SHOWN FROM REAR SIDE)

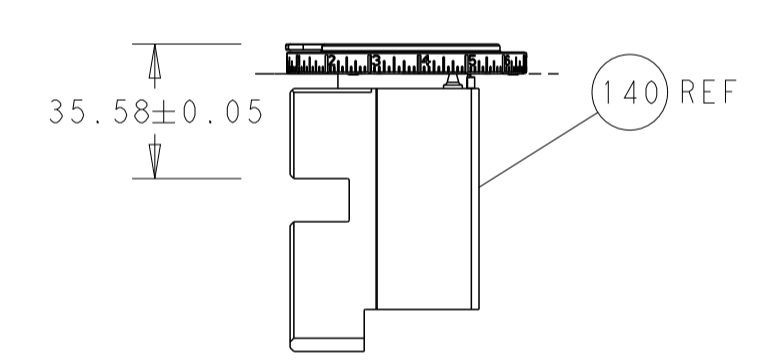


DETAIL A

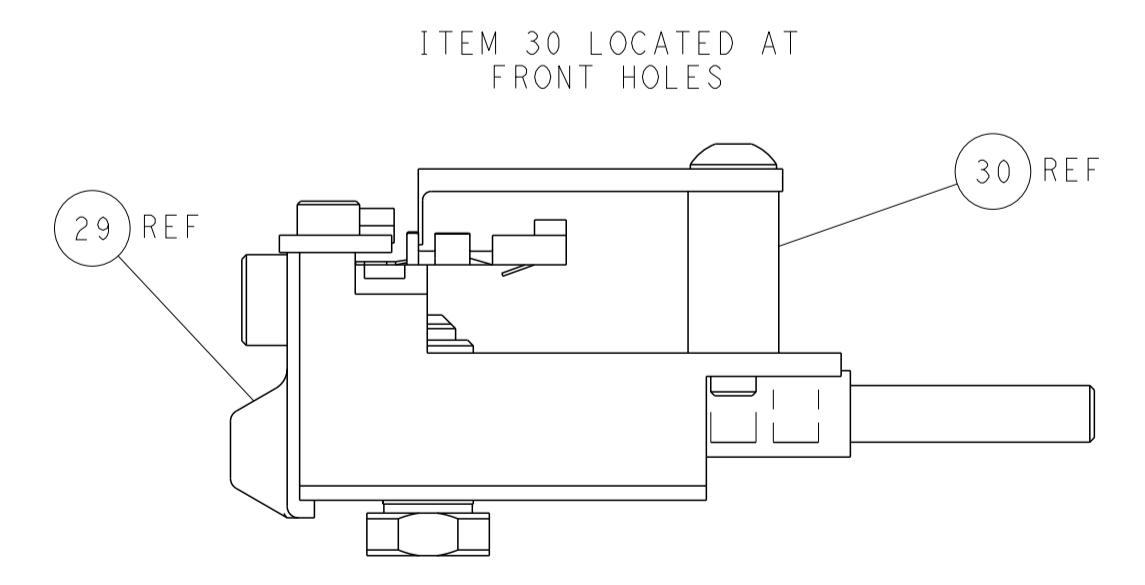
## CAM POSITIONS



TERMINAL SUPPORT LOCATION



RAM SET-UP



FEED TRACK POSITION GUIDE BY INSULATION BARREL

**PACIFIC VERSION**  
 Shown on sheets 3 of 4 & 4 of 4  
 (Atlantic version shown on sheets 1 of 4 & 2 of 4)

|   |  |  |  |
|---|--|--|--|
| <small>THIS DRAWING IS UNPUBLISHED. RELEASED FOR PUBLICATION. ALL RIGHTS RESERVED. THIS IS THE PROPERTY OF TYCO ELECTRONICS CORPORATION. IT IS TO BE USED ONLY FOR THE PURPOSES AND LIMITATIONS SPECIFIED HEREIN. NO PARTS OR INFORMATION CONTAINED HEREIN ARE TO BE REPRODUCED OR TRANSMITTED IN ANY FORM OR BY ANY MEANS, ELECTRONIC OR MECHANICAL, INCLUDING PHOTOCOPYING, RECORDING, OR BY ANY INFORMATION STORAGE AND RETRIEVAL SYSTEM, WITHOUT PERMISSION IN WRITING FROM TYCO ELECTRONICS CORPORATION.</small> |  | DWN: C. CHEN 04JUL2012<br>CHK: S. XI 04JUL2012<br>APVD: J. CRUZ 04JUL2012                                    | NAME: TE Connectivity<br>Harrisburg, PA 17105-3608 |
| DIMENSIONS: mm<br>TOLERANCES UNLESS OTHERWISE SPECIFIED:<br>0 PLC ±<br>1 PLC ±<br>2 PLC ±<br>3 PLC ±<br>4 PLC ±<br>ANGLES FINISH ±  | PRODUCT SPEC<br>APPLICATION SPEC<br>WEIGHT<br>SCALE: 1:2 | SIZE: A1<br>CAGE CODE: 00779<br>DRAWING NO: 2151453<br>RESTRICTED TO: Customer Accessible Production Drawing | SHEET 4 OF 4<br>REV C                              |