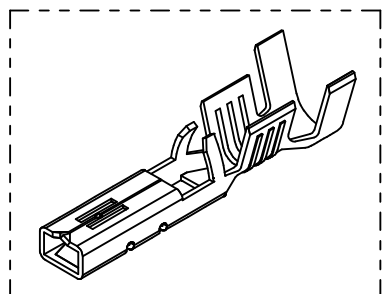
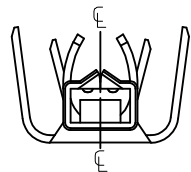
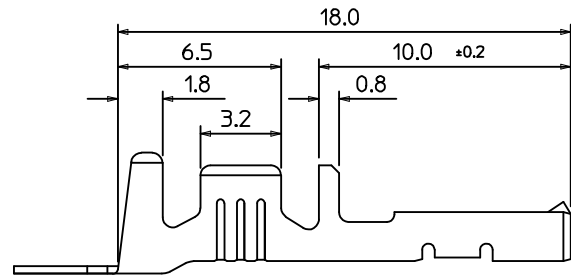
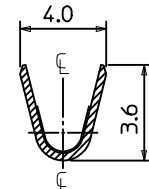
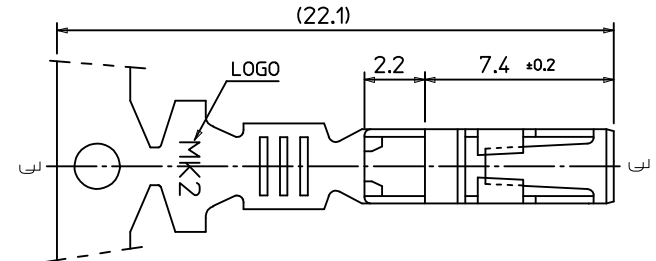


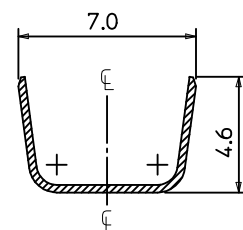
SEC' : B-B'



ISOMETRIC VIEW



SEC' : C-C'



SEC' : D-D'

NOTES

1. MATERIAL : PHOSPHOR BRONZE
0.3mm THICKNESS
2. FINISH : PRE-PLATED TIN
3. RECOMMENDED LENGTH OF WIRE STRIP IS 4.0-4.8mm.
- ④ 4. APPLICABLE WIRE SIZE : AWG #20+#20
AWG #20+#18
AWG #18+#18

REVISED EC NO: KOR2016-0060 DRWN: JSSHIN 2015/12/24 CHKD: SHCHU 2015/12/28 APPR: YSK1M02 2015/12/30	DESCRIPTION 1	QUALITY SYMBOLS	GENERAL TOLERANCES (UNLESS SPECIFIED)	DIMENSION STYLE	SCALE	DESIGN UNITS	THIRD ANGLE PROJECTION
		$\nabla=0$ $\sphericalangle=0$	mm INCH	MM ONLY	5:1	METRIC	
		4 PLACES ± --- ± --- 3 PLACES ± --- ± --- 2 PLACES ± 0.3 ± --- 1 PLACE ± 0.3 ± ---	DRAWN BY: BKCH01 CHECKED BY: BKCH01 APPROVED BY: YSK1M02 DATE: 1992/11/17 DATE: 1992/11/17 DATE: 2015/12/30	TITLE	.070 FEMALE TERMINAL (B-TYPE)		
		ANGULAR ± 1 °	MATERIAL NO.	MOLEX INCORPORATED			
		DRAFT WHERE APPLICABLE MUST REMAIN WITHIN DIMENSIONS	357480310	DOCUMENT NO.	SD-35748-003		
		SIZE	THIS DRAWING CONTAINS INFORMATION THAT IS PROPRIETARY TO MOLEX INCORPORATED AND SHOULD NOT BE USED WITHOUT WRITTEN PERMISSION				