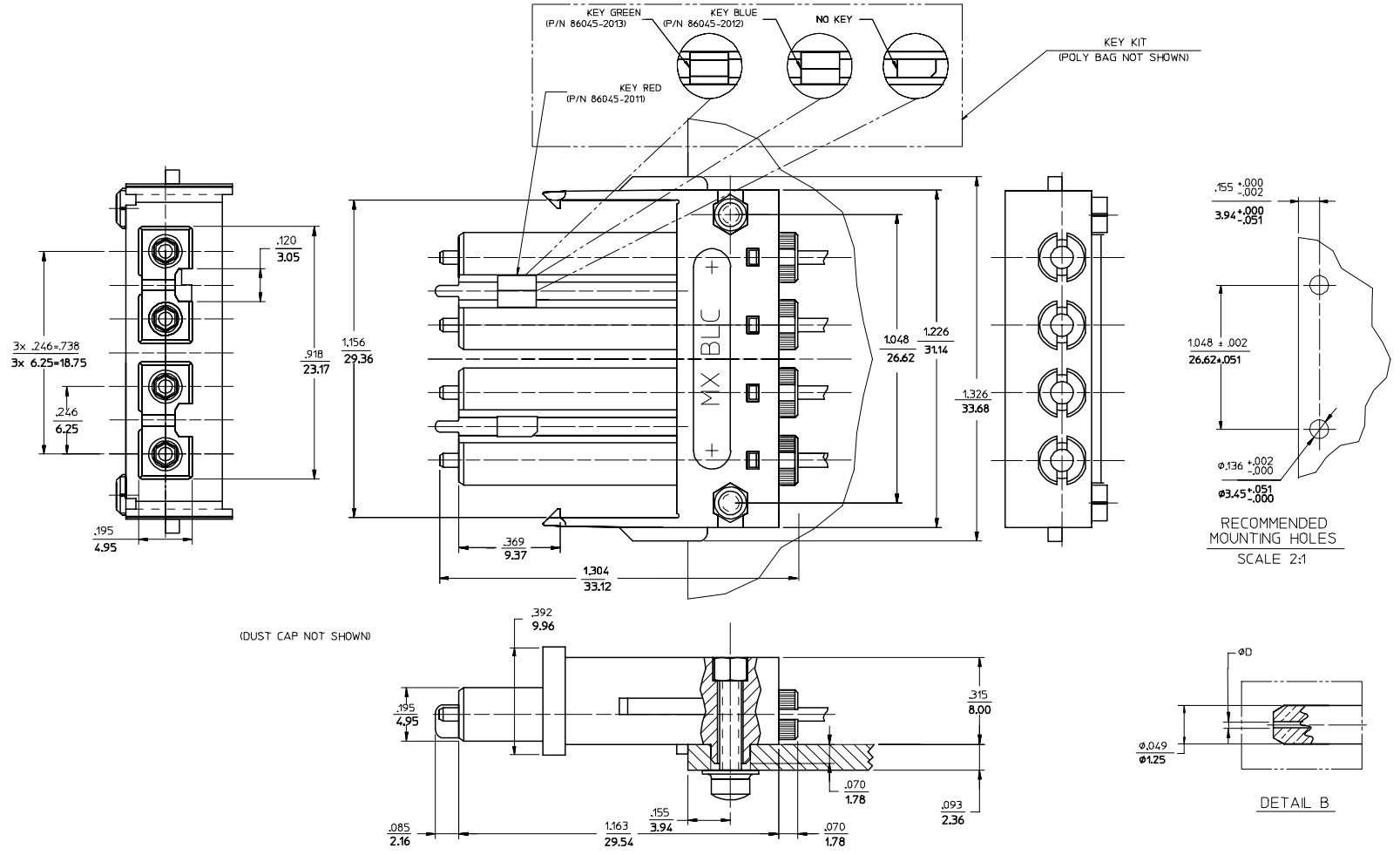


CONNECTOR P/N	ØD (H)
106044-2200	125.50
106044-3000	127.00
106044-4200	125.00
106044-5000	126.00
106044-6200	125.25



- NOTES:
- KEYS ARE TO BE PACKAGED UNASSEMBLED WITH CONNECTOR IN POLY BAG.

ENTER DESCRIPTION EC NO: MF2007-0349 DRAWN/REV/VER 2006/11/28 CHKD: 2006/11/28 APPR: JGUMIN 2006/12/04 REV A1	QUALITY SYMBOLS ▽=0 ▽=0	GENERAL TOLERANCES (UNLESS SPECIFIED) <table border="1"> <thead> <tr> <th></th> <th>mm</th> <th>INCH</th> </tr> </thead> <tbody> <tr> <td>4 PLACES</td> <td>± .15</td> <td>± .005</td> </tr> <tr> <td>3 PLACES</td> <td>± .10</td> <td>± .003</td> </tr> <tr> <td>2 PLACES</td> <td>± .07</td> <td>± .002</td> </tr> <tr> <td>1 PLACE</td> <td>± .05</td> <td>± .001</td> </tr> </tbody> </table>		mm	INCH	4 PLACES	± .15	± .005	3 PLACES	± .10	± .003	2 PLACES	± .07	± .002	1 PLACE	± .05	± .001	DIMENSION STYLE IN/MM	SCALE 3.5:1	DESIGN UNITS INCH	THIRD ANGLE PROJECTION
		mm	INCH																		
	4 PLACES	± .15	± .005																		
	3 PLACES	± .10	± .003																		
2 PLACES	± .07	± .002																			
1 PLACE	± .05	± .001																			
		DRAWN BY KP	DATE 2006/05/12	TITLE BLC CONNECTOR (4 POSITION)																	
		CHECKED BY ILG	DATE 2006/05/12	MOLEX INCORPORATED																	
		APPROVED BY MATERIAL NO.		DOCUMENT NO. SD-106044-XXX0	SHEET NO. 1 OF 01																

DRAFT WHERE APPLICABLE MUST REMAIN WITHIN DIMENSIONS

SIZE C

SEE TABLE

THIS DRAWING CONTAINS INFORMATION THAT IS PROPRIETARY TO MOLEX INCORPORATED AND SHOULD NOT BE USED WITHOUT WRITTEN PERMISSION