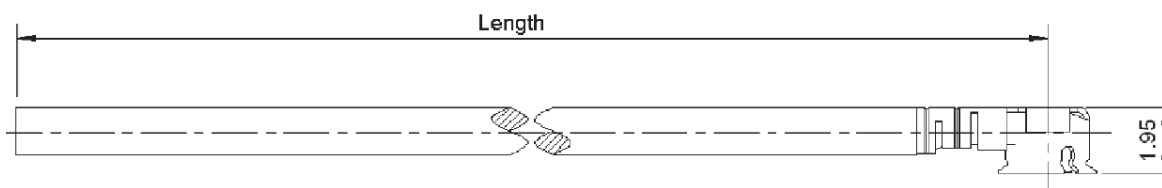
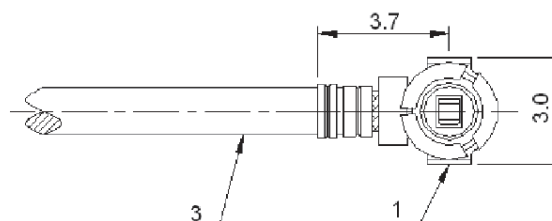


<b>PLUG MML H2.5- PIGTAIL</b>	<b>R302.255.003 XXX</b>
<b>CABLE 1.33/50S-BR,LENGTH=XXXMM</b>	Series : <b>MML</b>

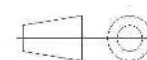


Length=XXX	Step	Tolerance
30 to 100	10	±2
110 to 200		±3
225 to 300	25	±5
325 to 500		±10



E.g. XXX=070 means length is 70±2, the part number is R302.255.003 070

All dimensions are in mm.



- \* 1 \* Connector A : **MML H2.5 PLUG (gold plated)**
- \* 2 \* Connector B : **NA**
- \* 3 \* Cable : **1.33/50S BLACK**

**ELECTRICAL CHARACTERISTICS**

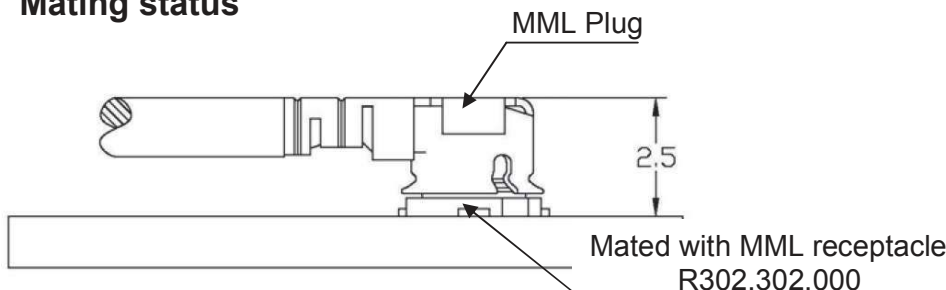
Impedance	<b>50 Ω</b>
Frequency	<b>0-6 GHz</b>
Operating temperature	<b>-40/+90 ° C</b>
VSWR	<b>NA + 0.00 x F(GHz) Maxi</b>
Insertion loss	<b>NA √F(GHz) dB Maxi</b>
Voltage rating	<b>250 Veff Maxi</b>
Dielectric withstanding voltage	<b>300 Veff mini</b>
Insulation resistance	<b>500 MΩ mini</b>

**SPECIFICATION**

Weight	<b>0.80 g</b>
Cable retention	<b>4 N mini</b>
Mating life	<b>30 Cycles</b>
Others :	

Length	*Weight(Maxi)
30 to 100	0.80 g
110 to 200	0.80 g
225 to 350	0.90 g
375 to 500	1.00 g

**Mating status**



Edition : 1307 A

Design changes may be in order to improve the product.

*This document contains proprietary information and such information shall not be disclosed to any third party for any purpose whatsoever or used for manufacturing purposes without prior written agreement from RADIALL*

