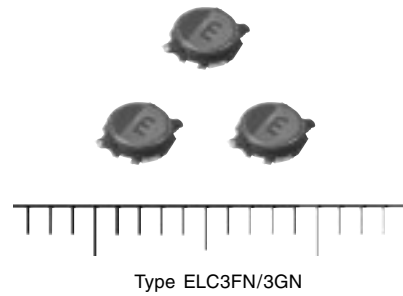


SMD Choke Coils

Series: **N**
 Type: **ELC3FN**
ELC3GN



■ Features

- Low DC resistance and large current capability
- Shock resistant

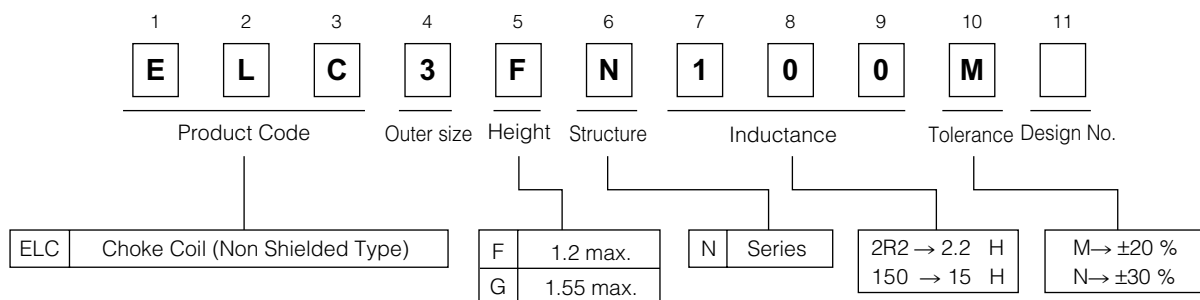
■ Recommended Applications

- DC-DC converter circuitry for computer peripherals and cellular phones.
- Chopper circuit decoupling chokes for DC-DC converter circuitry

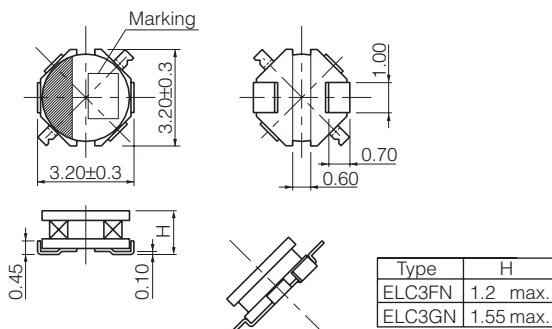
■ Standard Packing Quantity

- 2000 pcs./Reel

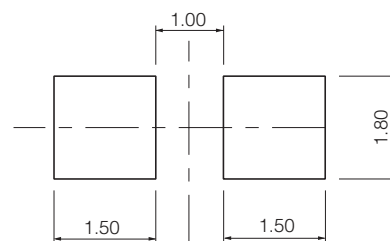
■ Explanation of Part Numbers



■ Dimensions in mm (not to scale)



■ Recommended land patterns in mm (not to scale)



Standard Parts

| Series | Part Number | Inductance (100 kHz) | | R _{DC} (at 20 °C) | | *Rated Current (mA max.) | Marking |
|---------------|-------------|-------------------------|------------|-------------------------------|------------|--------------------------------|---------|
| | | (μ H) | Tol. | (m Ω) | Tol. | | |
| 3FN Series | ELC3FN1R0N | 1.0 | $\pm 30\%$ | 80 | $\pm 20\%$ | 1400 | A |
| | ELC3FN1R8N | 1.8 | | 110 | | 1100 | C |
| | ELC3FN2R2N | 2.2 | | 120 | | 1000 | D |
| | ELC3FN2R7N | 2.7 | | 150 | | 950 | E |
| | ELC3FN3R9N | 3.9 | | 240 | | 770 | F |
| | ELC3FN4R7N | 4.7 | | 280 | | 750 | H |
| | ELC3FN5R6N | 5.6 | | 310 | | 680 | I |
| | ELC3FN6R8N | 6.8 | 360 | 620 | | K | |
| | ELC3FN7R5N | 7.5 | 390 | 600 | | L | |
| | ELC3FN100M | 10.0 | 430 | 530 | | M | |
| | ELC3FN150M | 15.0 | 1000 | 370 | | O | |
| | ELC3FN220M | 22.0 | 1180 | 330 | | R | |
| | ELC3FN330M | 33.0 | 1900 | 260 | | T | |
| | ELC3FN470M | 47.0 | 2450 | 230 | | V | |
| ELC3FN680M | 68.0 | 4200 | 170 | X | | | |
| 3GN Series | ELC3GN1R0N | 1.0 | $\pm 30\%$ | 64 | 1300 | A | |
| | ELC3GN1R6N | 1.6 | | 83 | 1200 | C | |
| | ELC3GN2R2N | 2.2 | | 100 | 1000 | D | |
| | ELC3GN3R3N | 3.3 | | 130 | 970 | E | |
| | ELC3GN4R7N | 4.7 | | 200 | 760 | H | |
| | ELC3GN6R8N | 6.8 | 250 | 680 | K | | |
| | ELC3GN8R2N | 8.2 | 410 | 540 | L | | |
| | ELC3GN100M | 10.0 | 430 | 530 | M | | |
| | ELC3GN150M | 15.0 | 600 | 430 | O | | |
| | ELC3GN220M | 22.0 | 950 | 330 | R | | |
| | ELC3GN330M | 33.0 | 1400 | 280 | T | | |
| | ELC3GN470M | 47.0 | 1950 | 240 | V | | |
| | ELC3GN680M | 68.0 | 3000 | 190 | X | | |

* Current: This indicates the value of current when the inductance is 70% of nominal value and case temperature has risen 45 °C (at 20 °C)

Embossed Carrier Tape Dimensions in mm (not to scale)

