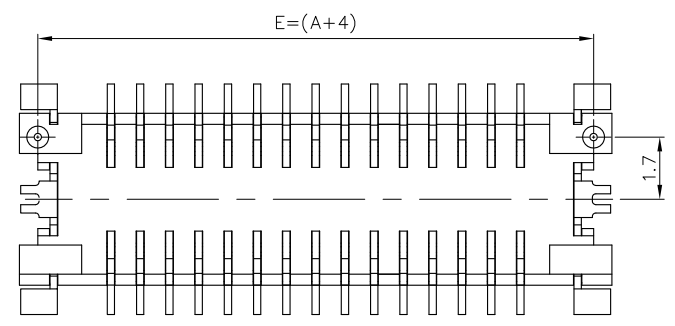
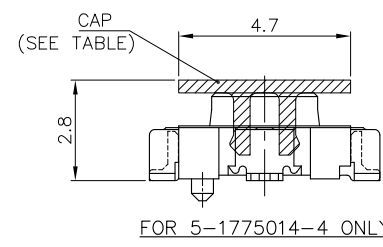
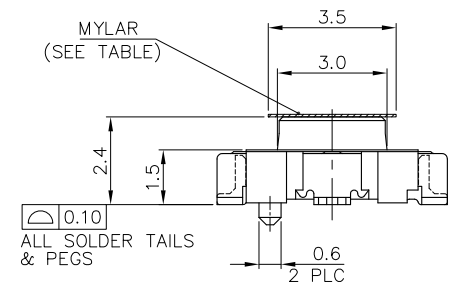
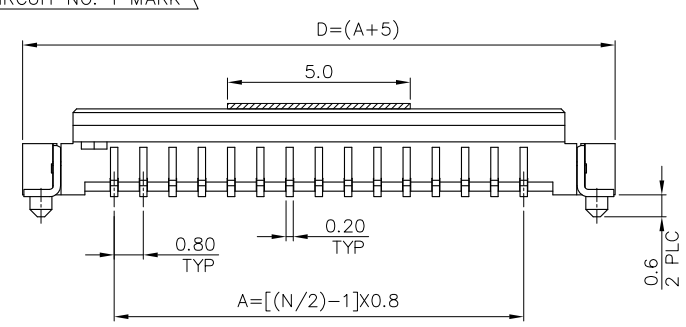
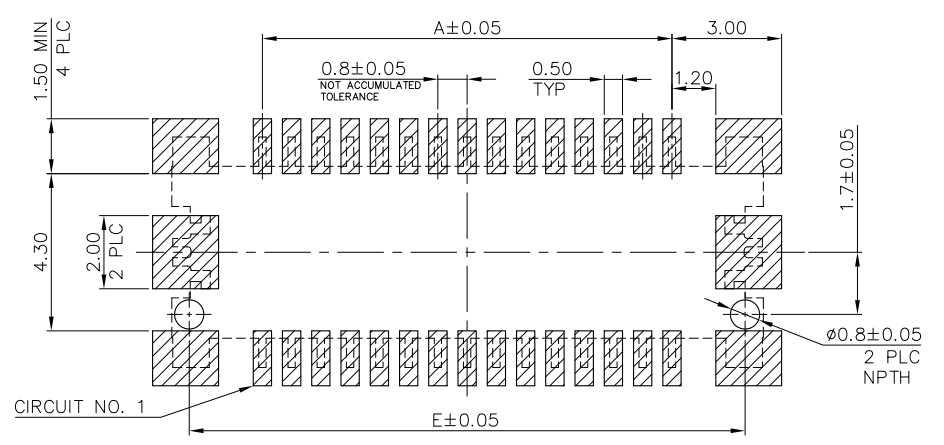
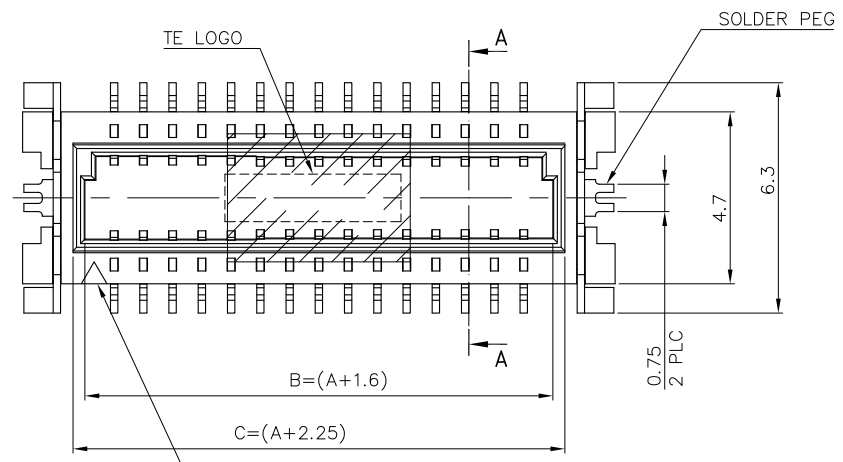


THIS DRAWING IS UNPUBLISHED. RELEASED FOR PUBLICATION
 © COPYRIGHT 2013 BY TE CONNECTIVITY. ALL RIGHTS RESERVED.

LOC	DIST	REVISIONS			DATE	DWN	APVD
DW	-	P	LTR	DESCRIPTION			
		E		ECR-13-004285	08MAR13	AW	WK



NOTES:

- MATERIAL:
 HOUSING: PA6T, UL94 V-0, NATURAL COLOR.
 CONTACTS: PHOSPHOR BRONZE.
 PEGS: BRASS.
- FINISH:
 CONTACTS: (SEE TABLE)
 PLATING B: GOLD FLASH ON ENTIRE CONTACT.
 PLATING C: 100μ" MIN. MATTE-TIN ON ENTIRE CONTACT.
 (WITH ENTIRE CONTACT UNDERPLATED 50μ" MIN. NICKEL.)
 PEGS: 100μ" MIN. TIN OR MATTE-TIN OVER 50μ" MIN. NICKEL.
- PART NUMBER OF MATING RECEPTACLE: X-1775013-X
- REFLOW SOLDER CAPABLE TO 260°C AS PER
 TEC-109-201, CONDITION B.

CAP OR MYLAR	CONTACT PLATING	WEIGHT (GRAMS)	DIMENSIONS					NO. OF CONTACTS	PART NUMBER
			E	D	C	B	A		
CAP	C	0.155	8	9	6.25	5.6	4.0	12	5-1775014-4
MYLAR	B	0.236	15.2	16.2	13.45	12.8	11.2	30	5-1775014-2
		0.298	19.2	20.2	17.45	16.8	15.2	40	4-1775014-0
MYLAR	C	0.236	15.2	16.2	13.45	12.8	11.2	30	3-1775014-0
		0.199	12.8	13.8	11.05	10.4	8.8	24	2-1775014-4
N/A	C	0.125	8	9	6.25	5.6	4.0	12	1-1775014-2
		0.29	19.2	20.2	17.45	16.8	15.2	40	1775014-8
MYLAR	B	0.23	15.2	16.2	13.45	12.8	11.2	30	1775014-7
		0.19	12.8	13.8	11.05	10.4	8.8	24	1775014-6
MYLAR	B	0.12	8	9	6.25	5.6	4.0	12	1775014-5
		0.298	19.2	20.2	17.45	16.8	15.2	40	1775014-4
MYLAR	B	0.236	15.2	16.2	13.45	12.8	11.2	30	1775014-3
		0.199	12.8	13.8	11.05	10.4	8.8	24	1775014-2
		0.125	8	9	6.25	5.6	4.0	12	1775014-1

THIS DRAWING IS A CONTROLLED DOCUMENT.

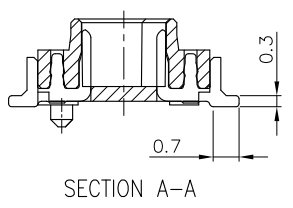
DWN: A. WU 05FEB2013
 CHK: S. CHIEN 05FEB2013
 APVD: W. KODAMA 05FEB2013
 PRODUCT SPEC: 108-57488
 APPLICATION SPEC: -
 WEIGHT: SEE TABLE
 CUSTOMER DRAWING

STE TE Connectivity

NAME: BOARD TO BOARD CONNECTOR, 0.8mm PITCH, FINE-STACK, 3H, PLUG

SIZE: A3
 CAGE CODE: 00779
 DRAWING NO: C-1775014
 RESTRICTED TO: -

SCALE: - SHEET: 1 OF 2 REV: E

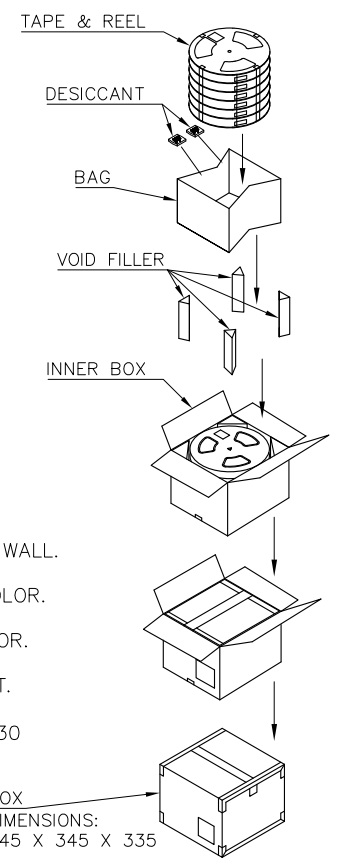
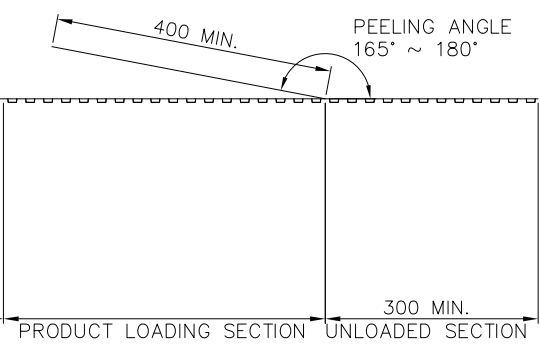
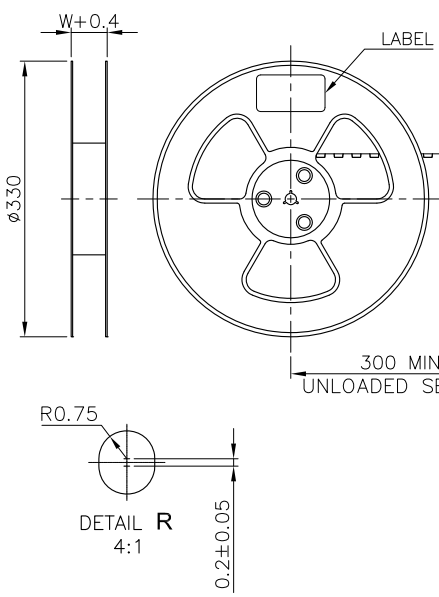
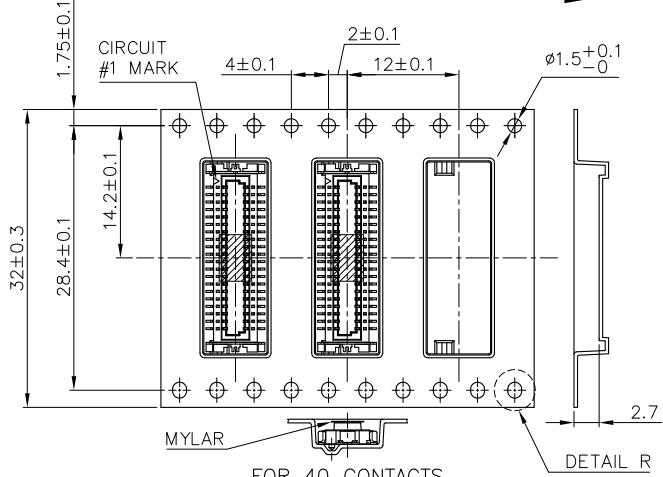


5. SUBSTANCE RESTRICTIONS FOR LOW HALOGEN (BY WEIGHT):
 BROMINE (Br) ≤ 900 PPM (0.09%)
 CHLORINE (Cl) ≤ 900 PPM (0.09%)
 TOTAL CONCENTRATION OF (Cl) + (Br) ≤ 1500 PPM (0.15%)

THIS DRAWING IS UNPUBLISHED. RELEASED FOR PUBLICATION
 © COPYRIGHT 2013 BY TE CONNECTIVITY. ALL RIGHTS RESERVED.

LOC	DIST	REVISIONS			
DW	-	P	LTR	DESCRIPTION	DATE
				SEE SHEET 1	DWN
					APVD

USER DIRECTION OF UNREELING →

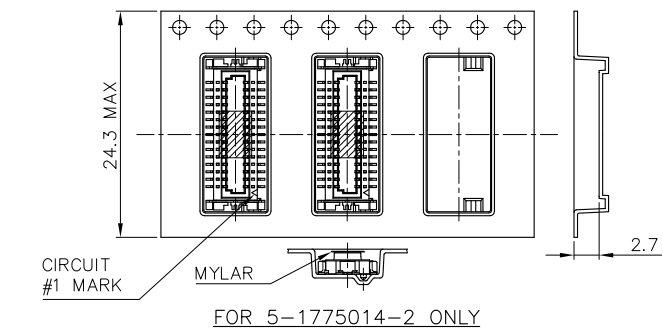
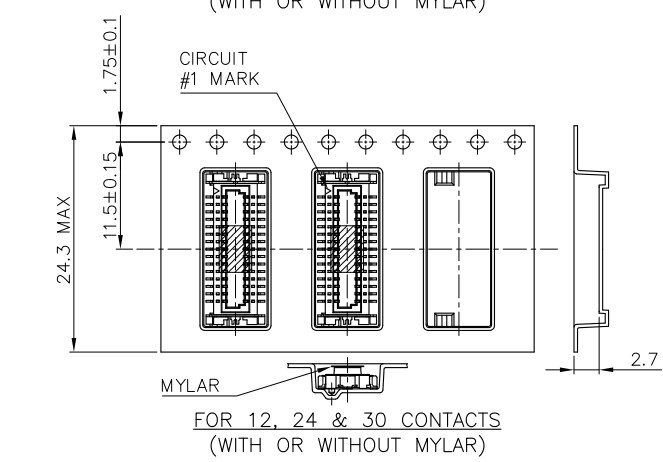
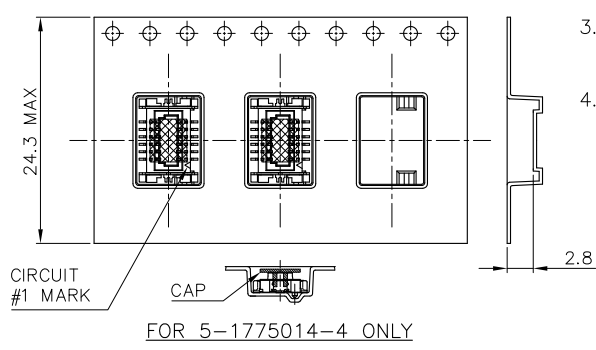


NOTES:

- MATERIAL:
 BOX: FIBREBOARD, CORRUGATED, DOUBLE WALL.
 COVER TAPE: PET, TRANSPARENT COLOR.
 CARRIER TAPE: POLYSTYRENES, BLACK COLOR.
 REEL: HIPS, BLUE COLOR.
 BAG: POLYETHYLENES, TRANSPARENT COLOR.
- EACH BAG SHALL BE INCLUDED DESICCANT.
- PEELING STRENGTH: 0.1 ~ 1.3 N (10 ~ 130 GRAMS).
- PEELING SPEED: 300 mm/min.

12000	1500	8	12.35	4.85	40
15000	1500	10	11.2	3.9	30
15000	1500	10	10.12	3.25	24
15000	1500	10	9.25	2.35	12
QUANTITY	PCS /TAPE	REELS /BOX	G/W (Kg)	N/W (Kg)	NO. OF CONTACTS

USER DIRECTION OF UNREELING →



THIS DRAWING IS A CONTROLLED DOCUMENT.

DIMENSIONS: MM	TOLERANCES UNLESS OTHERWISE SPECIFIED:	DWN	-
0 PLC	±	CHK	-
1 PLC	±	APVD	-
2 PLC	±	NAME	-
3 PLC	±	PRODUCT SPEC	-
4 PLC	±	APPLICATION SPEC	-
ANGLES	±	SIZE	A3
MATERIAL	FINISH	CAGE CODE	00779
		DRAWING NO	C=1775014
		RESTRICTED TO	-
		CUSTOMER DRAWING	SCALE - SHEET 2 of 2 REV E

STE TE Connectivity
 BOARD TO BOARD CONNECTOR,
 0.8mm PITCH, FINE-STACK,
 3H, PLUG