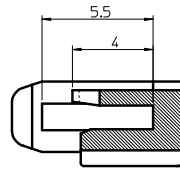
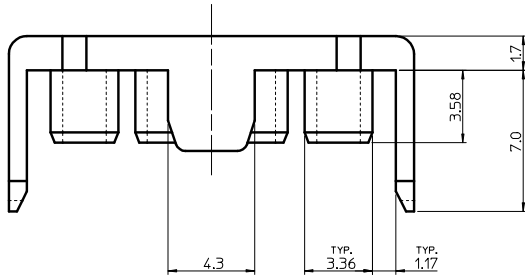
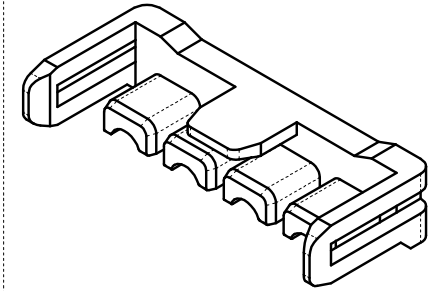
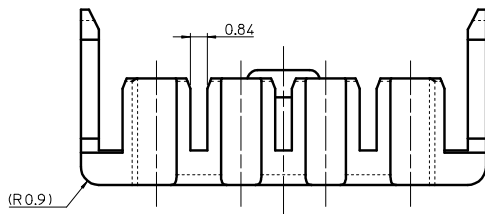
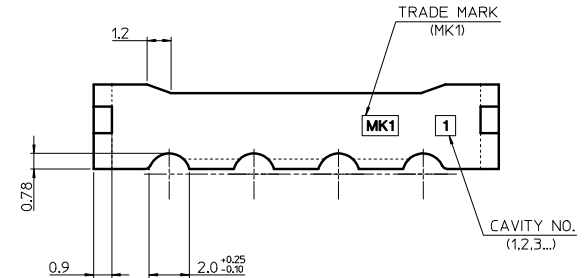
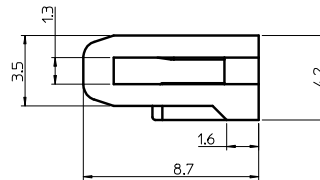
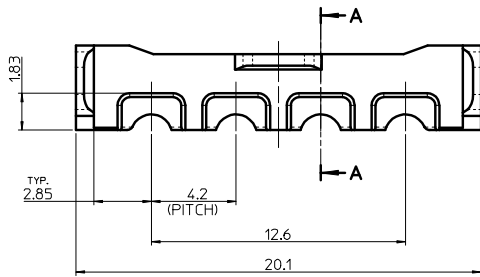


NOTES

1. MATERIAL : POLYAMIDE66(G/F:13%), BLUE COLOR
2. APPLICABLE TERMINAL : 5558 T2A SERIES  
 [APPLICABLE WIRE : #24~#26 (INS DIA. : 1.28~1.41mm)]
3. MATED WITH HOUSING : 5559-08PL
4. PRODUCT SPECIFICATION : RPS-49623-001



Section A-A



RELEASED EC NO: KOR2016-0042 DRWN: SCHONG03 2015/11/06 CHKD: SHCHU 2015/11/06 APPR: YSK1M02 2016/10/31	QUALITY SYMBOLS ▽=0 ∇=0	GENERAL TOLERANCES (UNLESS SPECIFIED)		DIMENSION STYLE MM ONLY		SCALE 4:1	DESIGN UNITS METRIC	THIRD ANGLE PROJECTION		
			mm	INCH	DRAWN BY	DATE	TITLE			
		4 PLACES	± ---	± ---	SCHONG03	2015/11/06	NEW MINI.FIT CONNECTOR UPPER TPA FOR CRIMP PIN HOUSING			
		3 PLACES	± ---	± ---	CHECKED BY	DATE				
	± 0.3	± ---	SHCHU	2015/11/06	<b>molex</b>					
2 PLACES	± 0.3	± ---	APPROVED BY	DATE						
	± 0.3	± ---	YSK1M02	2016/10/31	MATERIAL NO.		DOCUMENT NO.		SHEET NO.	
	± ---	± ---	DRAFT WHERE APPLICABLE MUST REMAIN WITHIN DIMENSIONS		495450892		SD-49545-002		1 OF 1	
		ANGULAR ± 1 °		SIZE A3		THIS DRAWING CONTAINS INFORMATION THAT IS PROPRIETARY TO MOLEX INCORPORATED AND SHOULD NOT BE USED WITHOUT WRITTEN PERMISSION				