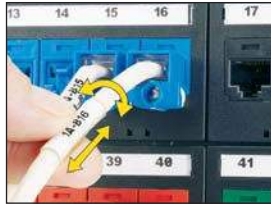


NEW! Turn-Tell[®] Label Cassettes

- Fast loading P1™ Label Cassette includes both label material and ribbon to make changing labels easy
- Labels can be easily installed on existing terminated wires and assemblies without disconnecting the wires/cables
- Innovative label design allows labels to rotate for visibility from any angle, and for repositioning on the wire/cable to align legends and improve aesthetics
- Temperature range: -40°F to 200°F (-40°C to 93°C)

Part Number	Width		Length		Print-On Area Height		Min. Cable O.D.		Max. Wire O.D.		Std. Pkg. Qty.	Std. Ctn. Qty.
	In.	mm	In.	mm	In.	mm	In.	mm	In.	mm		
R100X075V1C	1.00	25.4	0.75	19.1	0.25	6.4	0.12	3.1	0.16	4.1	1	10
R100X125V1C	1.00	25.4	1.25	31.8	0.38	9.7	0.16	4.1	0.22	5.6	1	10
R100X150V1C	1.00	25.4	1.50	38.1	0.50	12.7	0.22	5.6	0.28	7.1	1	10
R100X225V1C	1.00	25.4	2.25	57.2	0.75	19.1	0.28	7.1	0.39	9.9	1	10

Marker Plate Label Cassettes

- Fast loading P1™ Label Cassette includes both label material and ribbon to make changing labels easy
- Meets requirements for MIL-STD-202F, Notice 12 Method 215J
- Marker plates are designed for use on larger diameter wire/cables and may be applied after all terminations are complete
- Temperature range: -40°F to 176°F (-40°C to 80°C)

Part Number	Color	Width		Height		Print-On Area Width		Labels Per Cassette	Std. Pkg. Qty.	Std. Ctn. Qty.
		In.	mm	In.	mm	In.	mm			
M300X050Y6C	Yellow	3.00	76.2	0.50	12.7	1.80	45.7	50	1	10
M300X050Y7C	White	3.00	76.2	0.50	12.7	1.80	45.7	50	1	10

Flag Label Cassettes

- Fast loading P1™ Label Cassette includes both label material and ribbon to make changing labels easy
- Innovative design allows flag labels to be applied in either adhesive or non-adhesive orientations
- Provides larger labeling area for small cables
- Temperature range: -40°F to 302°F (-40°C to 150°C)

Part Number	Color	Width		Length		Min. Cable O.D.		Max. Wire O.D.		Wire Range	Labels Per Cassette	Std. Pkg. Qty.	Std. Ctn. Qty.
		In.	mm	In.	mm	In.	mm	In.	mm				
F100X150AJC	White	1.00	25.4	1.50	38.1	0.12	3.1	0.20	5.1	12-10 AWG	200	1	10