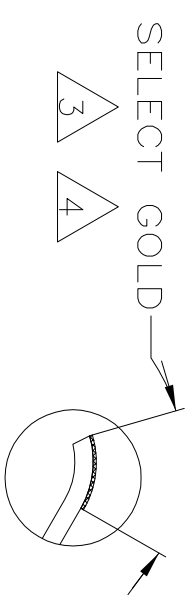
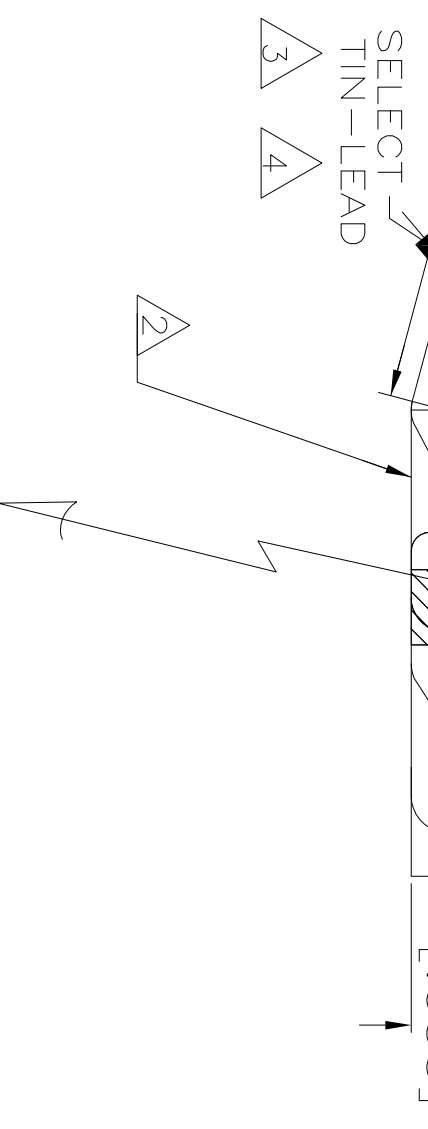
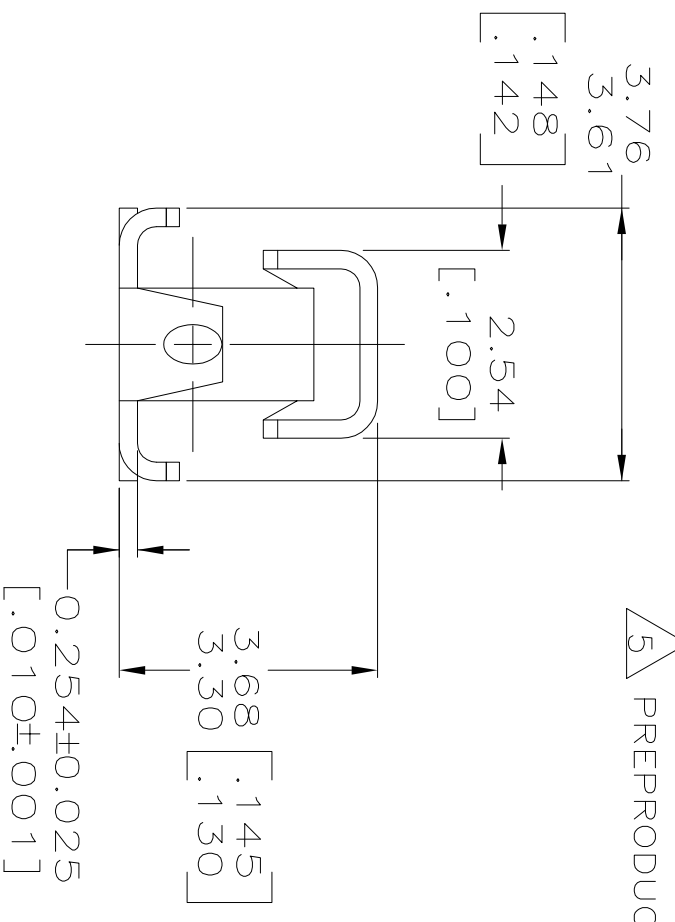
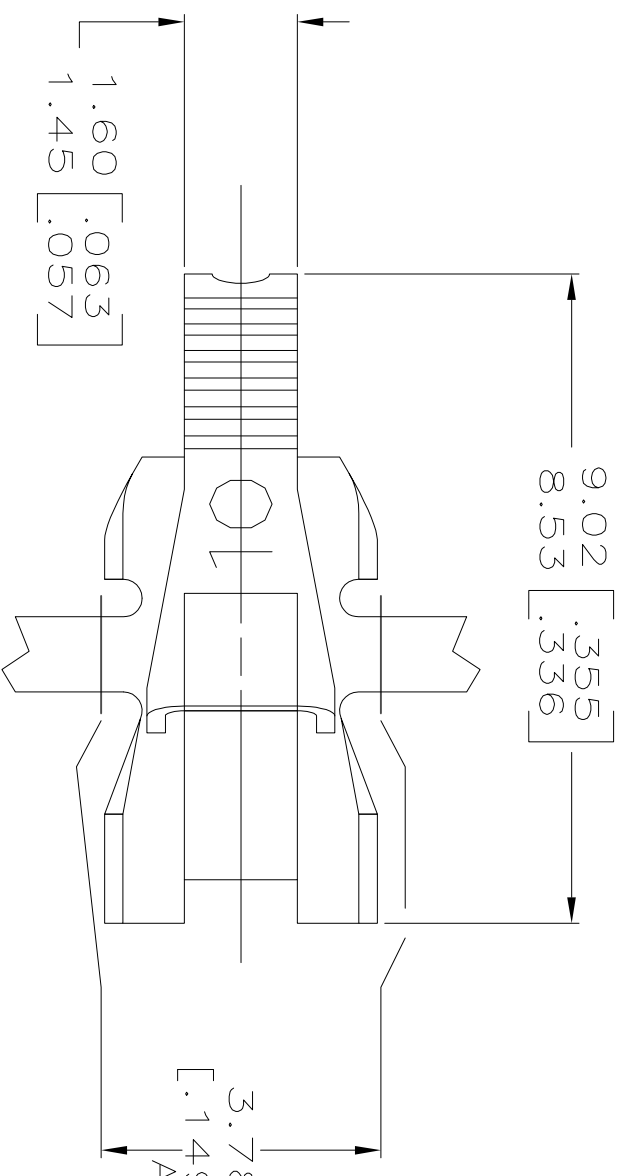


REV	DESCRIPTION	DATE	DWN	APVD
D2	REVISED PER ECR-12-022060	17FEB13	CX	LL

REVISIONS

- 1 CONTINUOUS STRIP ON REELS WITH TERMINALS LOCATED ON 6.10±0.08 [.240±.003] CENTERS. IDENTIFICATION NUMBER 10 FOR MAGNET WIRE RANGE.
- 2
- 3 0.000762[.000030] MIN SELECT GOLD ON ONE SIDE AS SHOWN, 0.00127[.000050] MIN SELECT TIN-LEAD ON BOTH SIDES AS SHOWN ALL OVER 0.00127[.000050] MIN NICKEL UNDERPLATE
- 4 0.000762[.000030] MIN SELECT GOLD ON ONE SIDE AS SHOWN, 0.00127[.000050] MIN SELECT TIN ON BOTH SIDES AS SHOWN ALL OVER 0.00127[.000050] MIN NICKEL UNDERPLATE
- 5 PREPRODUCTION - FASR REQUIRED



0.05-0.13mm	[#44-#36]	AWG	4	5	63845-2
OBSOLETE	0.05=0.13mm	[#44-#36]	AWG	3	63845-1

COPPER MAGNET WIRE RANGE

THIS DRAWING IS A CONTROLLED DOCUMENT.

TOLERANCES UNLESS OTHERWISE SPECIFIED:

0 PLC	± -
1 PLC	± -
2 PLC	± 0.25 [.010]
3 PLC	± -
4 PLC	± -
4 ANGLES	± -

MATERIAL: H02 BRASS
 FINISH: SEE TABLE

tyco
Electronics
 Tyco Electronics Corporation
 Harrisburg, Pa 17105-3608

NAME: TERMINAL, POKE-IN, MINI MAG-MATE

DWN: R.GRZYBOWSKI	4/MAY/95	APVD: M.S. FEHER	4/MAY/95	SIZE: A3	CAGE CODE: 00779	DRAWING NO: 63845	RESTRICTED TO: D2
CHK: M.S. FEHER	4/MAY/95	TL: SHUTTER	4/MAY/95	SCALE: 10:1	SHEET: 1	OF: 1	REV: D2
PRODUCT SPEC: 108-2016	APPLICATION SPEC: 114-2047	WEIGHT: -	CUSTOMER DRAWING				