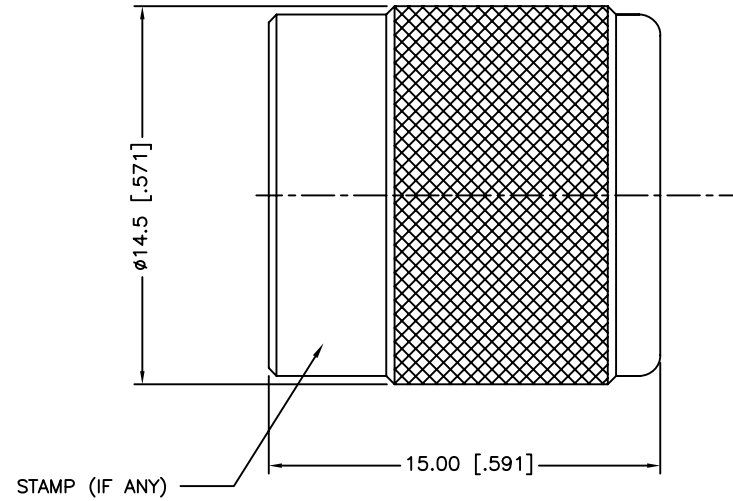


REV.	DATE	ECR NO.	DESCRIPTION
NC	04/06/10	XXXXXX	INITIAL RELEASE



<small>UNLESS OTHERWISE SPECIFIED DIMENSIONS ARE IN MILLIMETERS. DIMENSIONS IN [ ] ARE IN INCHES AND FOR CUSTOMER REFERENCE ONLY.</small> <small>UNLESS OTHERWISE SPECIFIED TOLERANCES FOR MILLIMETERS ARE:</small> 0.5 - 8mm $\pm$ 0.20mm 8 - 30mm $\pm$ 0.40mm 30 - 120mm $\pm$ 0.50mm <small>UNLESS OTHERWISE SPECIFIED TOLERANCES FOR INCHES ARE:</small> .020 - .315 = $\pm$ 0.007" .315 - 1.180 = $\pm$ 0.015" 1.180 - 4.724 = $\pm$ 0.020" DO NOT SCALE DRAWING	APPROVALS	DATE
	DRAWN F.WANG	04/06/10
	CHECKED	
	ISSUED	
	SHEET 1 OF 1	
CAD FILE	F:/CONNEX/202101-12.DWG	

# Amphenol Connex

PART DESCRIPTION			
TNC MALE CAP IP67 RATED			
PART NO.			
202101-12			
DWG. NO.	202101-12.DWG	REV.	NC
SIZE	A	SCALE	NA

2	GASKET	SILICONE	RED	1
1	SHELL	BRASS	NICKEL	1
DESCRIPTION	MATERIAL	FINISH	QTY	