

# Customer Information Sheet

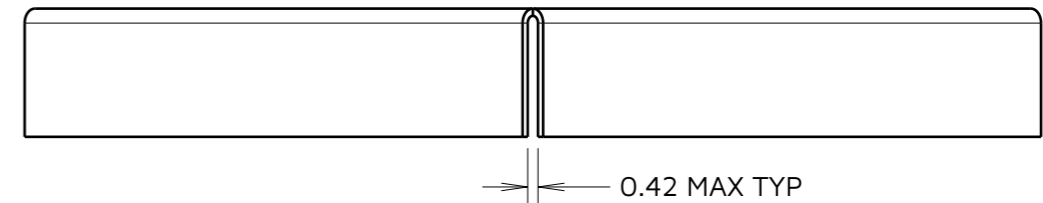
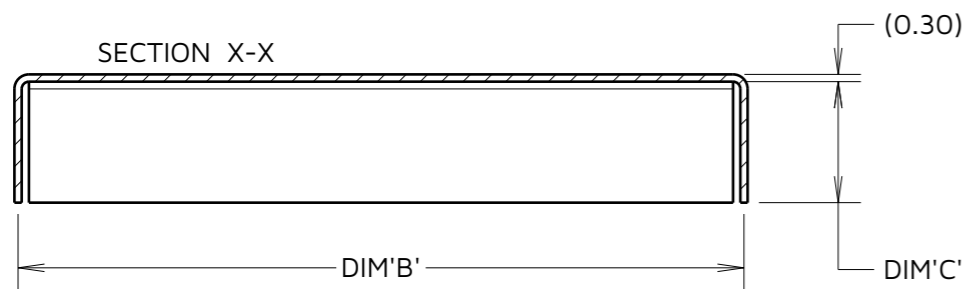
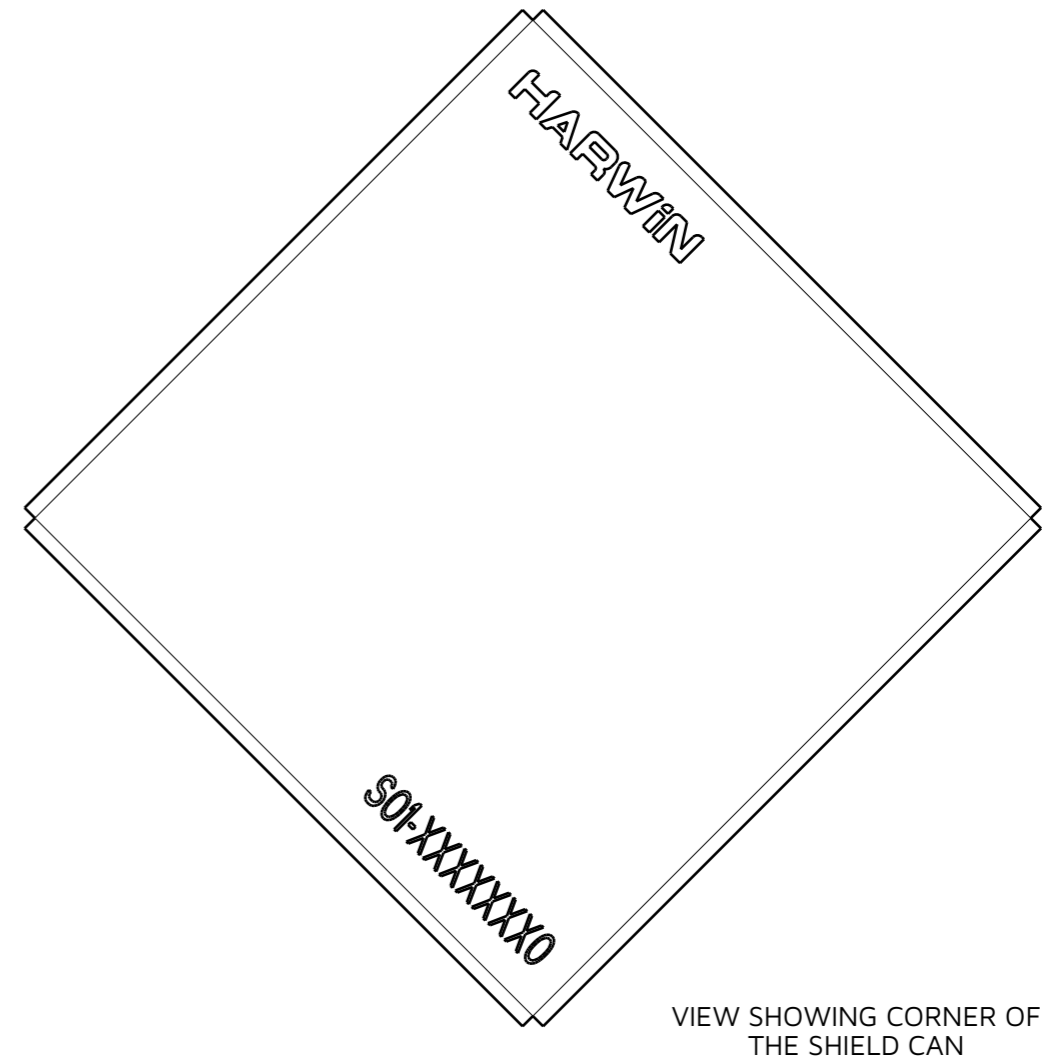
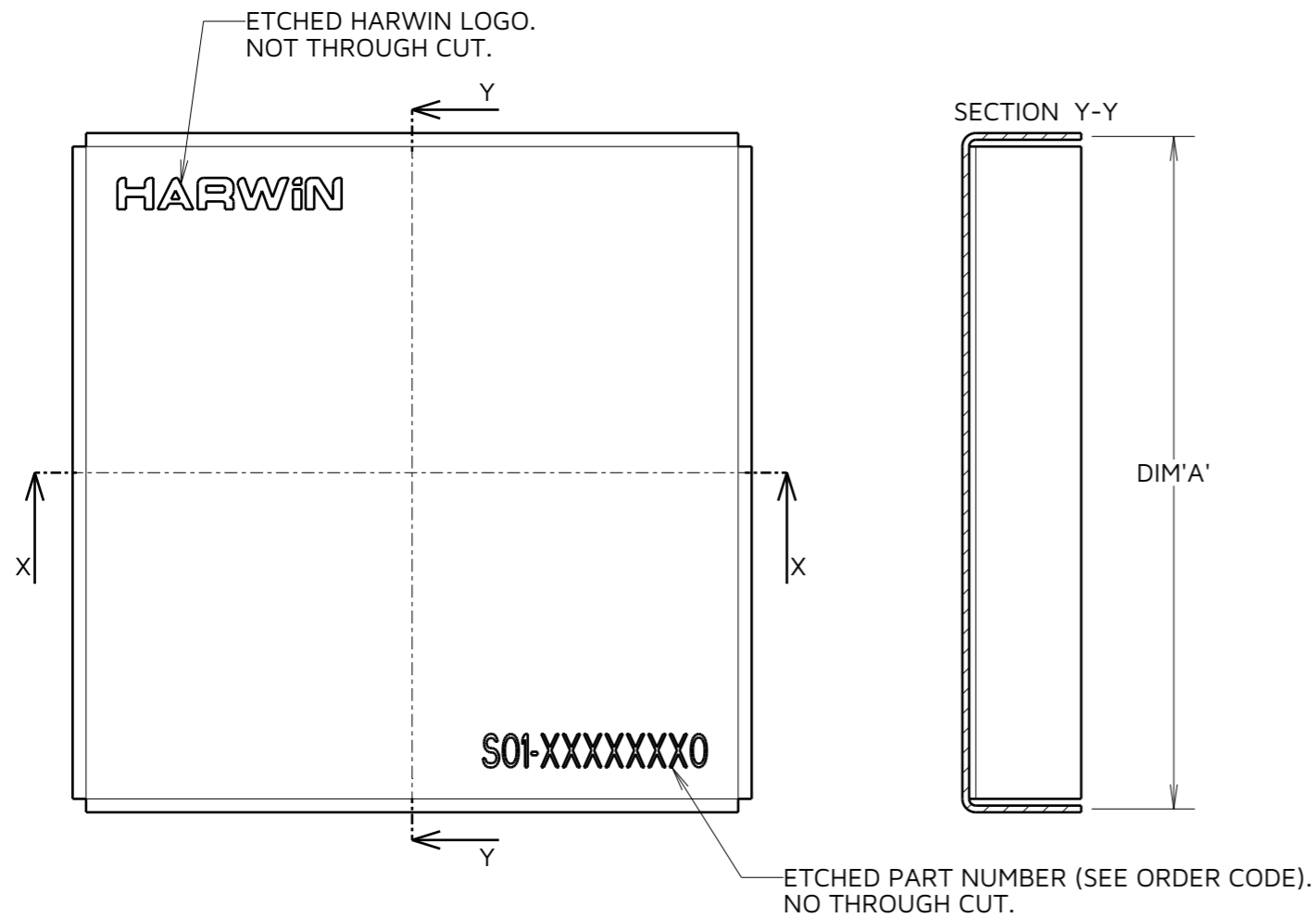
IF IN DOUBT - ASK



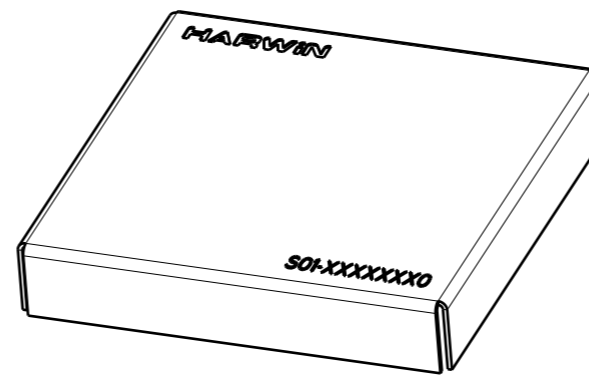
NOT TO SCALE

THIRD ANGLE PROJECTION

ALL DIMENSIONS IN mm



- NOTES:
1. DIM 'C', HEIGHT OF THE CAN IS FROM THE BOTTOM EDGE TO THE INSIDE OF THE TOP FACE.
  2. BOTH DIM 'A' AND 'B' ARE FROM THE CENTRE OF THE MATERIAL THICKNESS.
  3. CANS ARE PACKED INDIVIDUALLY IN POLY BAGS.
  4. SHIELD CAN IS RECOMMENDED FOR USE WITH RFI SHIELD CLIPS: S1711-XXR AND S2711-XXR.



PART No.	DIM 'A'	DIM 'B'	DIM 'C'
S01-30200500	30.0mm	20.0mm	5.0mm
S01-30300500	30.0mm	30.0mm	5.0mm
S01-40400500	40.0mm	40.0mm	5.0mm
S01-50250500	50.0mm	25.0mm	5.0mm

ORDER CODE:

S01-XXXXXXXXXO

SIZE:

DIM 'A' = LENGTH

DIM 'B' = WIDTH

DIM 'C' = HEIGHT

FINISH:

O = UNPLATED FINISH

FC	6	22.05.23	32675
NAME	ISS.	DATE	CN/CO
APPROVED: F.CHRISPINE			
CHECKED: R.PORTLOCK			
DRAWN: S.BENNETT			
ASSEMBLY DRG:			

**HARWIN**

www.harwin.com

TOLERANCES  
 X. = ±1mm  
 X.X = ±0.50mm  
 X.XX = ±0.20mm  
 X.XXX = ±0.01mm  
 ANGLES = ±5°  
 UNLESS STATED

THIS DRAWING AND ANY INFORMATION OR DESCRIPTIVE MATTER SET OUT HEREON ARE CONFIDENTIAL AND COPYRIGHT PROPERTY OF THE HARWIN GROUP AND MUST NOT BE DISCLOSED, LOANED, COPIED OR USED FOR MANUFACTURING, TENDERING OR FOR ANY OTHER PURPOSE WITHOUT THEIR WRITTEN PERMISSION.

MATERIAL:  
 NICKEL SILVER, HALF HARD NS106, TO BS1653  
 0.30mm THICK

TITLE:  
**EZ-BOARDWARE SHIELD CAN**

DRAWING NUMBER:  
**S01-XXXXXXXXXO**

SHT  
 2  
 OF  
 2