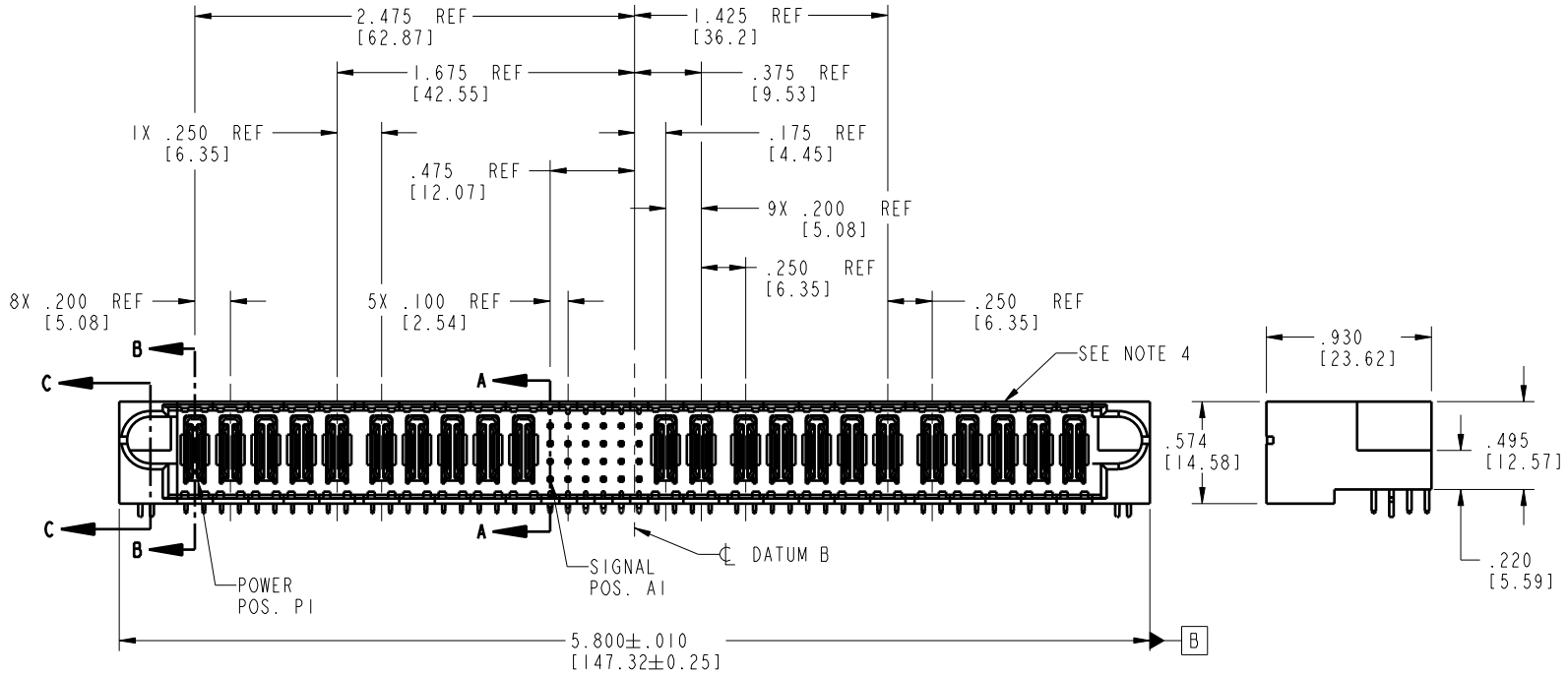
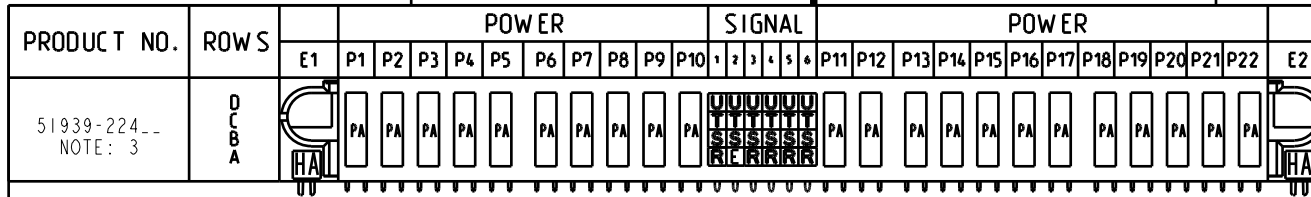


Tous droits strictement réservés. Reproduction ou communication à des tiers interdite sous quelque forme que ce soit sans autorisation écrite du propriétaire. Propriété de c FCI. Droits de reproduction FCI.

All rights strictly reserved. Reproduction or issue to third parties in any form whatsoever is not permitted without written authority from the proprietor. Property of FCI. Copyright FCI.



CODE	DIM "M" MATING LENGTH	CONTACT TYPE
E	.220 [5.59]	SIGNAL
R	.270 [6.86]	SIGNAL
S	.270 [6.86]	SIGNAL
T	.270 [6.86]	SIGNAL
U	.270 [6.86]	SIGNAL
PA	N/A [N/A]	POWER
HA	N/A [N/A]	HOLD-DOWN

mat'l code				tolerances unless otherwise specified		CUSTOMER	
lir	ecr no.	dr	date	linear	angles	COPY	
A	DG06-0027	RYAN	01/20/06	.XX±.01/0.X±0.3	0°±2°	FCI www.fciconnect.com	
				engr	opod	projection	
				chr		INCH/MM	
				opod		scale 1:1	
				sheet index	revision	product family PwrBlade code 213	
				1	2	size 51939-224 sheet 1 of 4	
				3	4	code 22526	

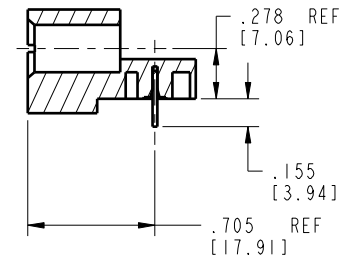
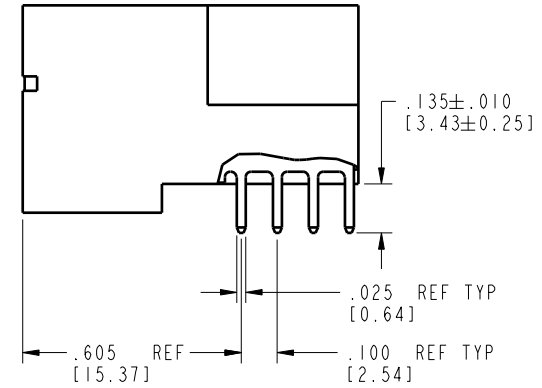
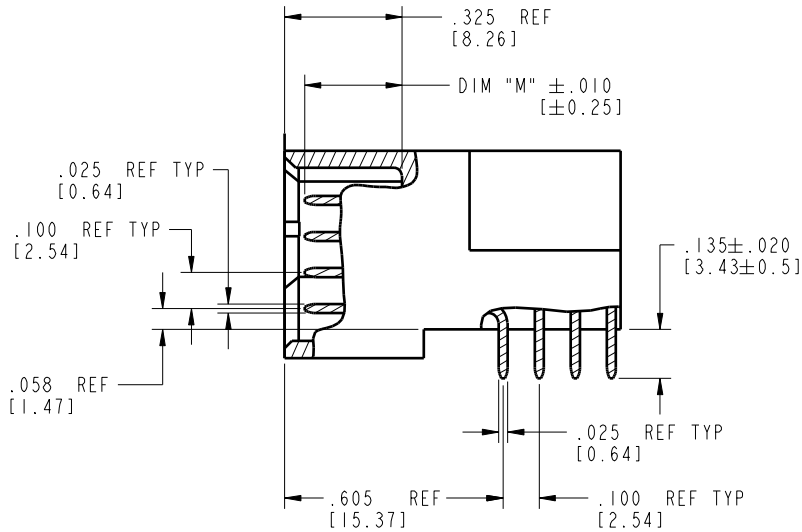
Pro/E

code code 22526

Tous droits strictement réservés. Reproduction ou communication à des tiers interdite sans quelque forme que ce soit sans autorisation écrite du propriétaire. Propriété de c FCI. Droits de reproduction FCI.

All rights strictly reserved. Reproduction or issue to third parties in any form whatsoever is not permitted without written authority from the proprietor. Property of FCI. Copyright FCI.

PRODUCT NUMBER
51939-224__
NOTE: 3



mat'l code				tolerances unless otherwise specified		CUSTOMER		A FCI	
SEE NOTE 2						COPY		www.fciconnect.com	
lir	ecr no.	dr	date	linear	.XX±.01/0.X±0.3	projection		title 10P + 24S + 12P	
A					.XXX±.005/0.XX±0.13	INCH/MM		RIGHT ANGLE SOLDER HEADER	
				angles	.XXX±.002/0.XXX±0.051	scale		product family PwrBlade	
				dr	0°±2°	1:1		code 213	
				engr	RYAN YUAN 01/20/06			size	
				chr	SALLY LUO 08/11/03			dwg no	
				appd	BEER FU 01/20/06			A 51939-224	
					JOSEPH HSIA 01/20/06			sheet 2 of 4	
sheet index	revision sheet								

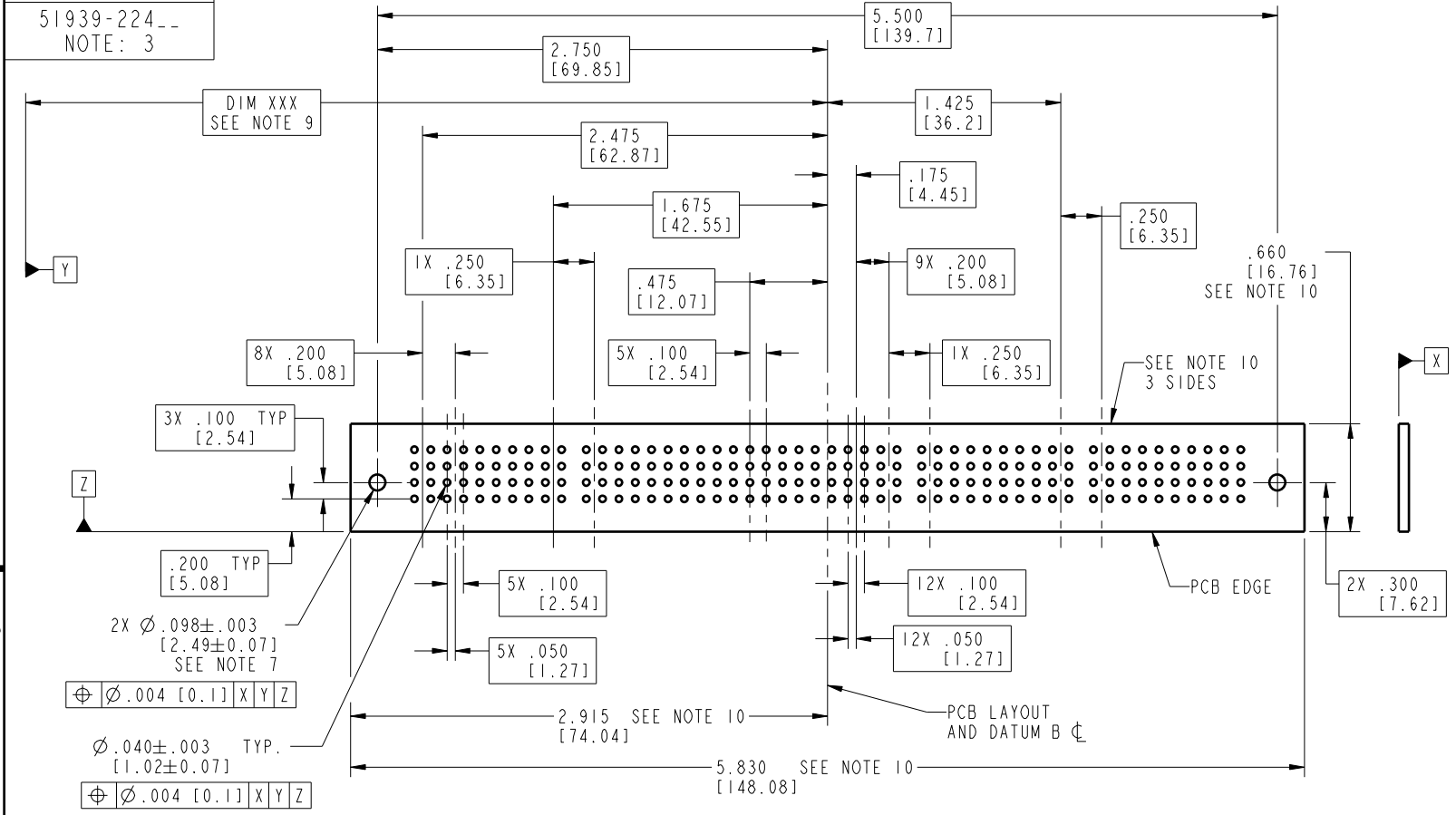
code code 22526

Pro/E

Tous droits strictement réservés. Reproduction ou communication à des tiers interdite sous quelque forme que ce soit sans autorisation écrite du propriétaire. Propriété de c FCI. Droits de reproduction FCI.

All rights strictly reserved. Reproduction or issue to third parties in any form whatsoever is not permitted without written authority from the proprietor. Property of FCI. Copyright FCI.

PRODUCT NUMBER
51939-224__
NOTE: 3



RECOMMENDED PCB LAYOUT

mat'l code				SEE NOTE 2	tolerances unless otherwise specified		CUSTOMER		 www.fciconnect.com
lir	ecn no.	dr	date	linear	.XX±.01/0.X±0.3	COPY		projection	
A				angles	.XXX±.005/0.XX±0.13	INCH/MM		title	
				dr	.XXX±.002/0.XXX±0.051	scale		RIGHT ANGLE SOLDER HEADER	
				eng	0°±2°	1:1		product family	
				chr	RYAN YUAN 01/20/06			PwrBlade	
				appd	SALLY LUO 08/11/03			code	
					BEER FU 01/20/06			213	
					JOSEPH HSIA 01/20/06			sheet	
sheet index	revision sheet							3 of 4	

code code 22526

Pro/E

Tous droits strictement réservés. Reproduction ou communication o des liers interdite sous quelque forme que ce soit sans autorisation écrite du propriétaire. Propriété de c FCI. Droits de reproduction FCI.



All rights strictly reserved. Reproduction or issue to third parties in any form whatsoever is not permitted without written authority from the proprietor. Property of FCI. Copyright FCI.

1 | 2

3 |

4

PRODUCT NUMBER
51939-224__
NOTE: 3

NOTES:

1. DIMENSIONS AND TOLERANCES ARE IN ACCORDANCE WITH ASME Y14.5M, 1994 UNLESS OTHERWISE SPECIFIED.

CONNECTOR NOTES:

- 2. HOUSING MATERIAL: UL 94 V-0 GLASS FILLED HIGH-TEMP THERMOPLASTIC
POWER CONTACT MATERIAL: COPPER ALLOY
SIGNAL PIN MATERIAL: COPPER ALLOY
- 3. 51939-224;51939-224LF;51939-224GLF PLATING SPEC. SEE PRINT:10064183
- 4. MANUFACTURER'S NAME, P/N, AND DATE CODE TO APPEAR ON THIS SURFACE.
- 5. PRODUCT SPECIFICATION GS-12-149.
APPLICATION SPECIFICATION BUS-20-067.

PCB NOTES:

- 6. ALL HOLE DIAMETERS ARE FINISHED HOLE SIZE.
- 7. MOUNTING HOLES, WHERE APPLICABLE, ARE UNPLATED.
- 8. $\varnothing .0453 \pm 0.0010$ [1.151 \pm 0.025] DRILLED HOLES PLATED WITH 0.0003 [0.008] MIN SnPb OVER .001 [0.03] TO .003 [0.08] Cu PLATING TO ACHIEVE $\varnothing .040 \pm .003$ [1.02 \pm .07] HOLE.
- 9. "DIM XXX" TO BE DETERMINED BY THE CUSTOMER.
- 10. CONNECTOR KEEP-OUT ZONE.

mat'l code				SEE NOTE 2	tolerances unless otherwise specified		CUSTOMER		A FCI		www.fciconnect.com	
lir	ecr no.	dr	date	linear	.XX±.01/0.X±0.3	COPY		projection		title		10P + 24S + 12P
A					.XXX±.005/0.XX±0.13					RIGHT ANGLE SOLDER HEADER		
				angles	.XXX±.002/0.XXX±0.051					product family		PwrBlade
				dr	0° ± 2°			INCH/MM		size		213
				engr	RYAN YUAN 01/20/06			scale		dwg no		sheet
				chr	SALLY LUO 08/11/03			1:1		51939-224		4 of 4
				opod	BEER FU 01/20/06							
					JOSEPH HSIA 01/20/06							
sheet index	revision sheet											

1 | 2

Pro/E

3 |

code code 22526

4