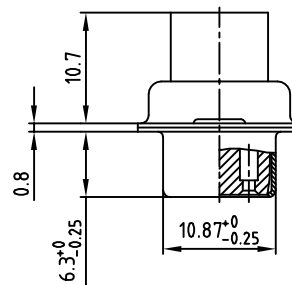
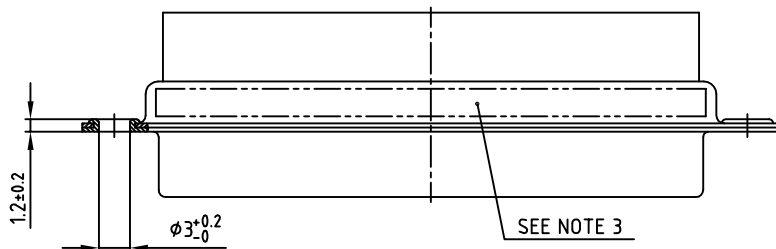
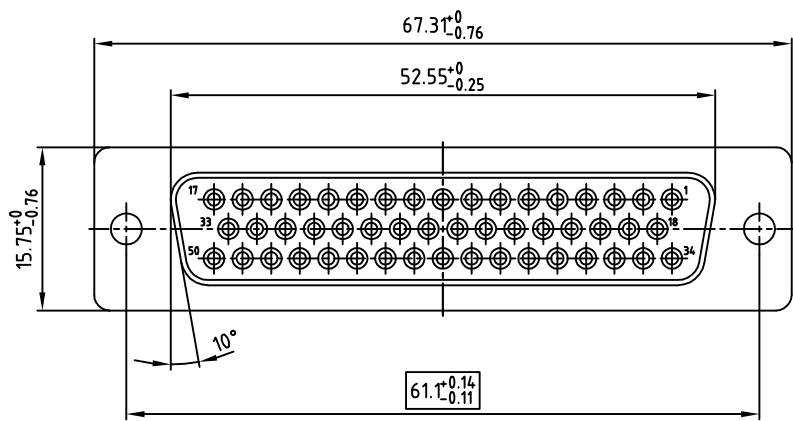


used for: D-SUB



NOTES:

1. METALSHELLS: STEEL; min. 320µ" TIN
2. INSULATORS: PBT GF UL 94 V-0, BLACK
3. CONNECTOR IS PART MARKED: 164X11809X CONEC ABC

G:\HW\Compliant_gross_0001.jpg

APPROVAL # FREIGABE # DEBLOCAGE # AUTORIZACION # APPROVAL	
CUSTOMER APPROVAL DATE:	
NAME:	TITLE:
COMPANY NAME:	
APPROVAL # FREIGABE # DEBLOCAGE # AUTORIZACION # APPROVAL	

THIS DRAWING MAY NOT BE COPIED OR REPRODUCED IN ANY WAY, AND MAY NOT BE PASSED ON TO A THIRD PARTY, WITHOUT WRITTEN PERMISSION. OWNERSHIP AND COPYRIGHT OF CONEC GmbH DO NOT ALTER CAD DRAWING BY HAND

rev.	description	date	name

tolerance			dim. in mm
2005	date	name	
drawn	22.04.	Schmidt	title:
appd.	22.04.	Kühle	
norm	DIN 41652		
d-old			dwg no: AutoCAD 2004
CONEC			
			DIN-A
			3
			sh: 1/1

scale: 2:1	
material: SEE NOTES	
title: D-SUB FEMALE CRIMP STYLE 50pos.	
dwg no: 16K1A1386	DIN-A 3 sh: 1/1
part no: 164X11809X	