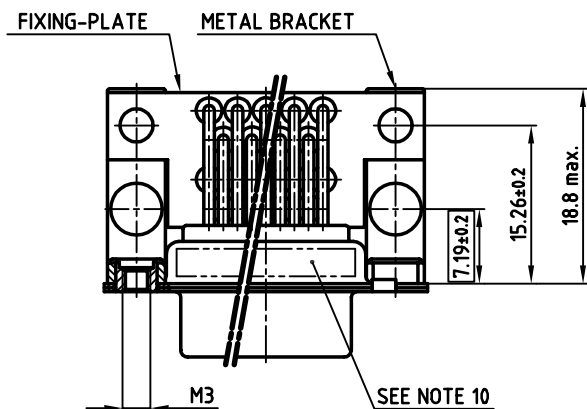
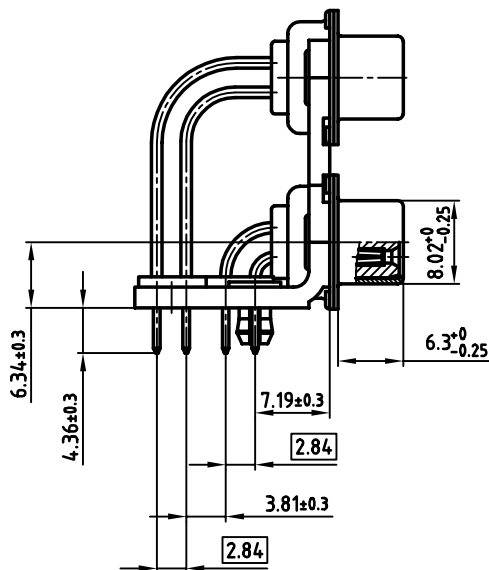
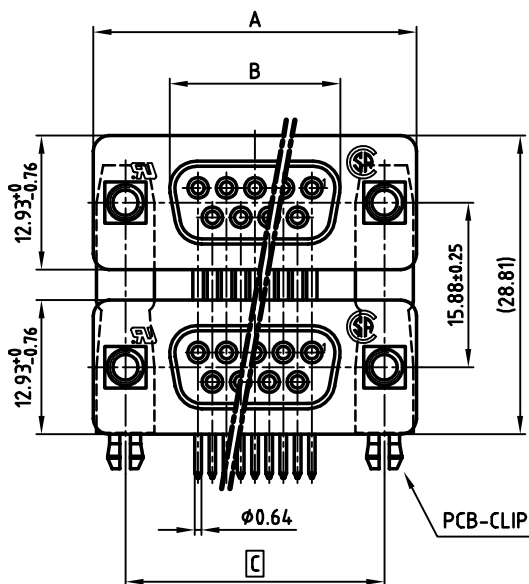


used for: D-SUB Dual Port

POS.	A -0.76	B -0.25	C	PART-NO.
2x 9	31.19	16.46	25.00 ^{+0.12} _{-0.13}	164A20489X
2x15	39.52	24.79	33.30 ^{+0.15} _{-0.1}	164A20499X
2x25	53.42	38.50	47.04 ^{+0.13}	164A20509X
2x37	69.70	54.96	63.50 ^{+0.13}	164A20519X



NOTES:

- METALSHELLS: STEEL; min. 320µ" TIN
- INSULATORS: PBT GF UL 94 V-0, BLACK
- CONTACTS: COPPER ALLOY
PLATING: 8µ" HARD GOLD OVER min. 50µ" NICKEL
- METAL BRACKET: STEEL; min. 320µ" TIN over 80µ" NICKEL
- THREADED INSERT: COPPER ALLOY; min. 200µ" TIN over 80µ" NICKEL
- FIXING-PLATE: PBT GF UL 94 V-0, BLACK
- PCB-SNAP: COPPER ALLOY; min. 200µ" TIN over 80µ" NICKEL
PCB-HOLE: $\phi 3.1 \pm 0.1$; PCB THICKNESS 1.6mm
- P.C.B. HOLE DRILLINGS ON SHEET 2 + 3
- MAXIMUM TORQUE VALUE FOR THREAD: 6" LBS
- CONNECTOR IS PART MARKED: PART-NO. CONEC Y/WW
- = CRITICAL DIMENSION

Directive 2002/95/EC
RoHS
Compliant

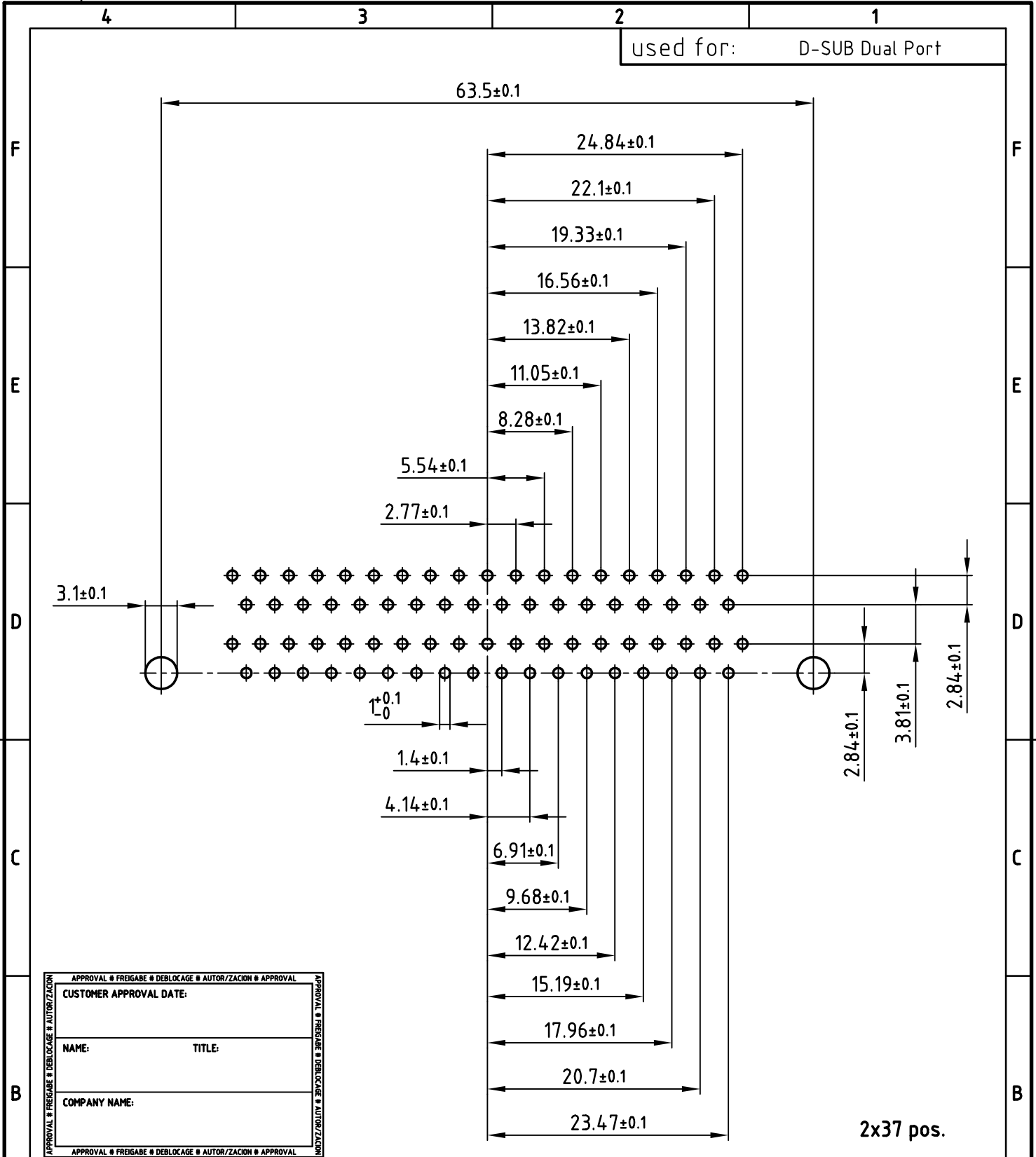
APPROVAL # FREIGABE # DEBLOCAGE # AUTORIZACION # APPROVAL	
CUSTOMER APPROVAL DATE:	
NAME:	TITLE:
COMPANY NAME:	
APPROVAL # FREIGABE # DEBLOCAGE # AUTORIZACION # APPROVAL	

THIS DRAWING MAY NOT BE COPIED OR REPRODUCED IN ANY WAY, AND MAY NOT BE PASSED ON TO A THIRD PARTY, WITHOUT WRITTEN PERMISSION. OWNERSHIP AND COPYRIGHT OF CONEC GmbH DO NOT ALTER CAD DRAWING BY HAND

rev.	description	date	name

tolerance		 dim. in mm
2003	date	
drawn	23.01.	name
appd.	23.01.	Parei
norm	DIN 41652	
d-old		
CONEC		

scale:	2:1
material:	SEE NOTES
title:	
DUAL PORT 15.88mm	
FEMALE / FEMALE 2x9pos. - 2x37pos. with threaded insert and 2 x PCB clip	
dwg no:	AutoCAD 2000
16K1A861	
part no:	SEE TABLE
DIN-A	3
sh:	1/3



APPROVAL # FREIGABE # DEBLOCAGE # AUTORIZACION # APPROVAL	
CUSTOMER APPROVAL DATE:	
NAME:	TITLE:
COMPANY NAME:	
APPROVAL # FREIGABE # DEBLOCAGE # AUTORIZACION # APPROVAL	

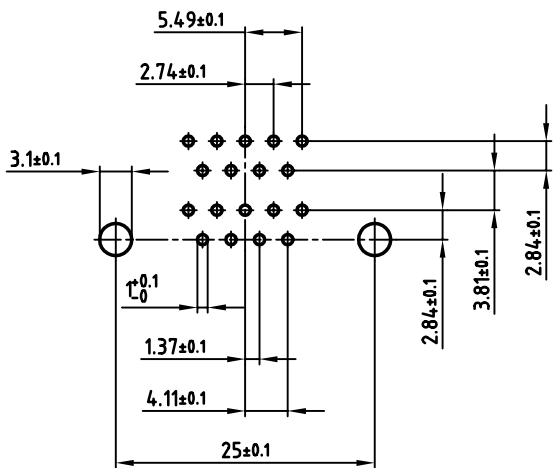
THIS DRAWING MAY NOT BE COPIED OR REPRODUCED IN ANY WAY, AND MAY NOT BE PASSED ON TO A THIRD PARTY WITHOUT WRITTEN PERMISSION.
 OWNERSHIP AND COPYRIGHT OF CONEC GmbH
 DO NOT ALTER CAD DRAWING BY HAND

tolerance	dim. in mm	
2003	date	name
drawn	23.01.	Parei
appd.	23.01.	Kühle
norm	DIN 41652	
d-old		
rev.	description	date

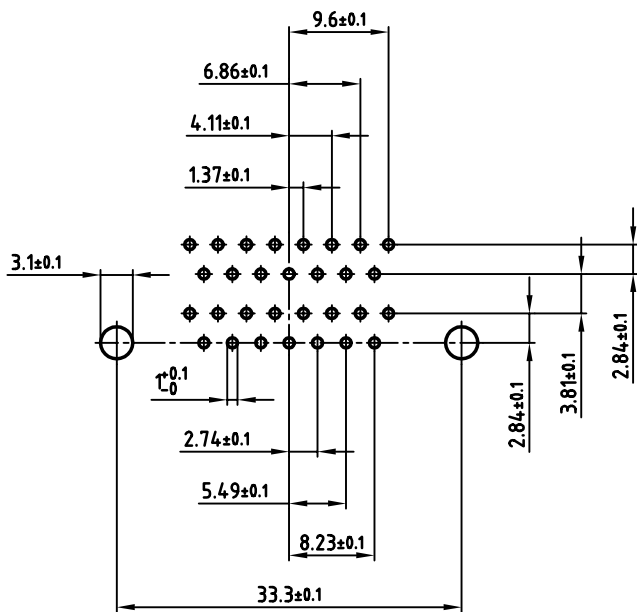


scale:	2:1	
material:	SEE SHEET 1	
title:	P.C.B. HOLE DRILLINGS DUAL PORT 15.88mm FEMALE / FEMALE with threaded insert and 2 x PCB clip	
dwg no:	AutoCAD 2000	DIN-A
	16K1A861	4
		sh:3/3
part no:	SEE SHEET 1	

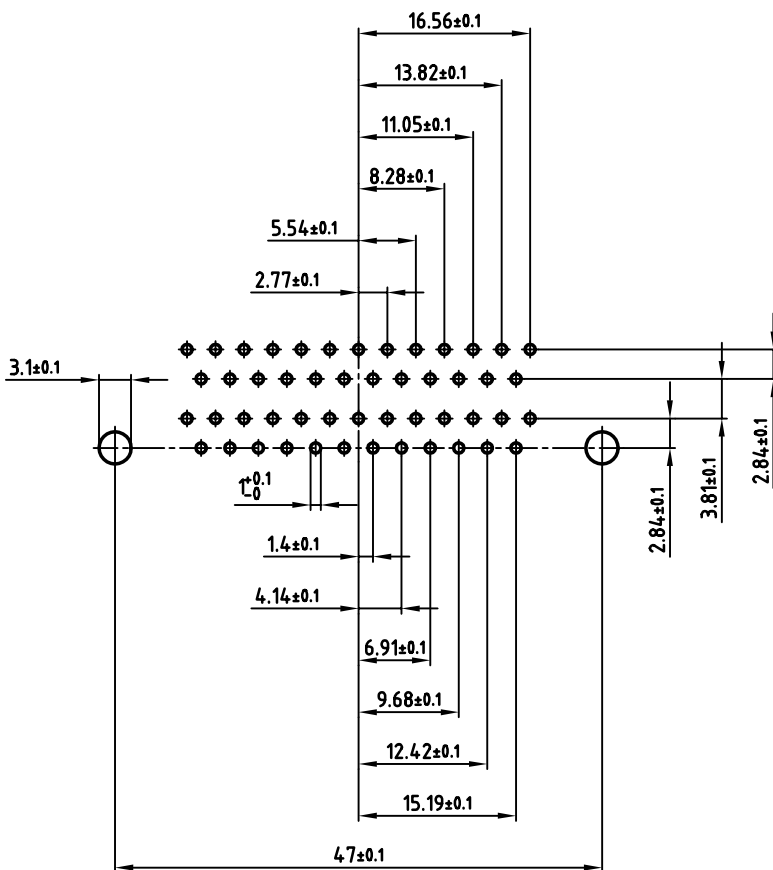
used for: D-SUB Dual Port



2x9 pos.



2x15 pos.



2x25 pos.

APPROVAL # FREIGABE # DEBLOCAGE # AUTORIZACION # APPROVAL

CUSTOMER APPROVAL DATE:

NAME: TITLE:

COMPANY NAME:

APPROVAL # FREIGABE # DEBLOCAGE # AUTORIZACION # APPROVAL

THIS DRAWING MAY NOT BE COPIED OR REPRODUCED IN ANY WAY, AND MAY NOT BE PASSED ON TO A THIRD PARTY, WITHOUT WRITTEN PERMISSION. OWNERSHIP AND COPYRIGHT OF CONEC Gmbh DO NOT ALTER CAD DRAWING BY HAND

rev.	description	date	name

tolerance	dim. in mm	
2003		
drawn	date	name
appd.	23.01.	Parei
norm	DIN 41652	
d-old		

scale: 2:1

material: SEE SHEET 1

title: P.C.B. HOLE DRILLINGS
DUAL PORT 15.88mm FEMALE / FEMALE
with threaded insert and 2 x PCB clip

dwg no: AutoCAD 2000 DIN-A
16K1A861 3 sh:2/3

part no: SEE SHEET 1