

REVISIONS

P	LTR	DESCRIPTION	DATE	DWN	APVD
A		REVISED PER ECR-20-002493	11FEB2020	GK	OD

ITEM NO	PARTNUMBER	DESCRIPTION	ITEM NO
1	2367322-1	ROT-T*072-B1 A0281-B301 without cap	2
1	2341281-1	Gehäuse kpl. / Bauform T2	1
2367237-1	PARTNUMBER	DESCRIPTION	ITEM NO
REVISION OF EACH ASSY NO. (WHEN BLANK, USE DWG. REVISION)			
PARTS LIST			

Ø50h7 +0
-0.025

Achtung:
Jeweils die angegebenen Aderpaare einmal auf 25mm
verseilen : blau und gelb / rot und schwarz /
rotweiss und gelbweiss

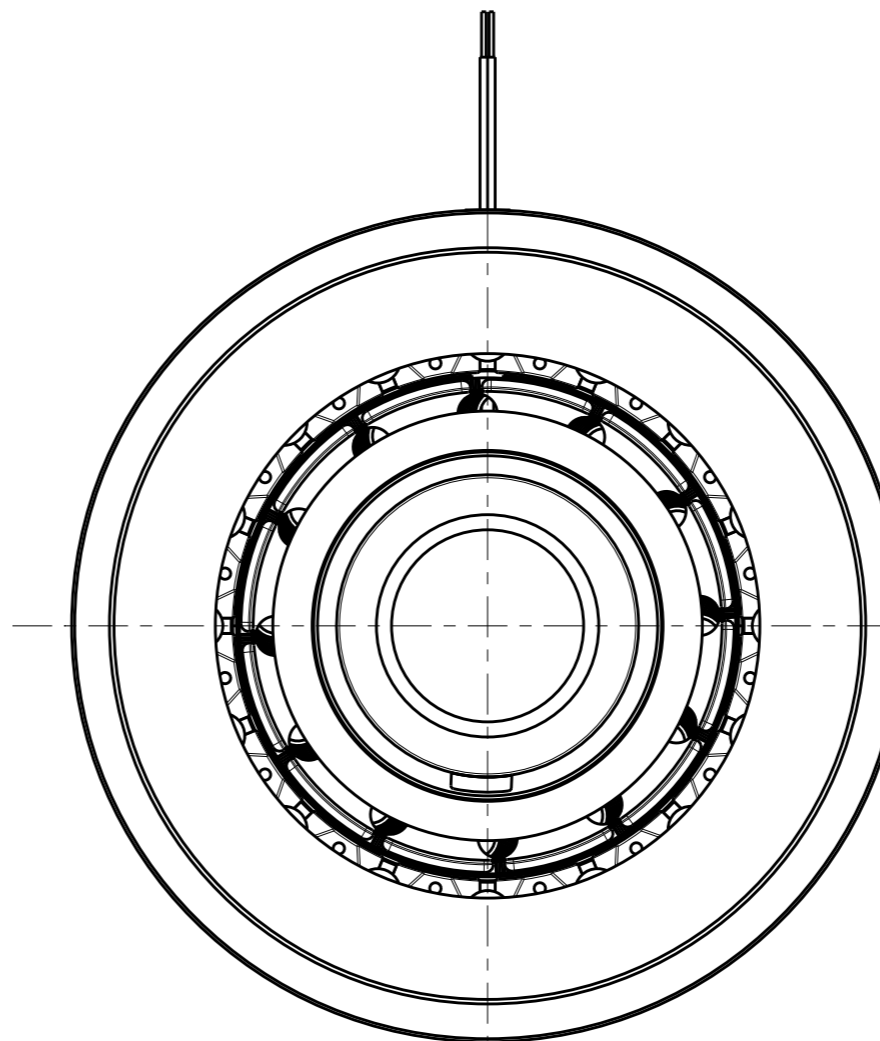
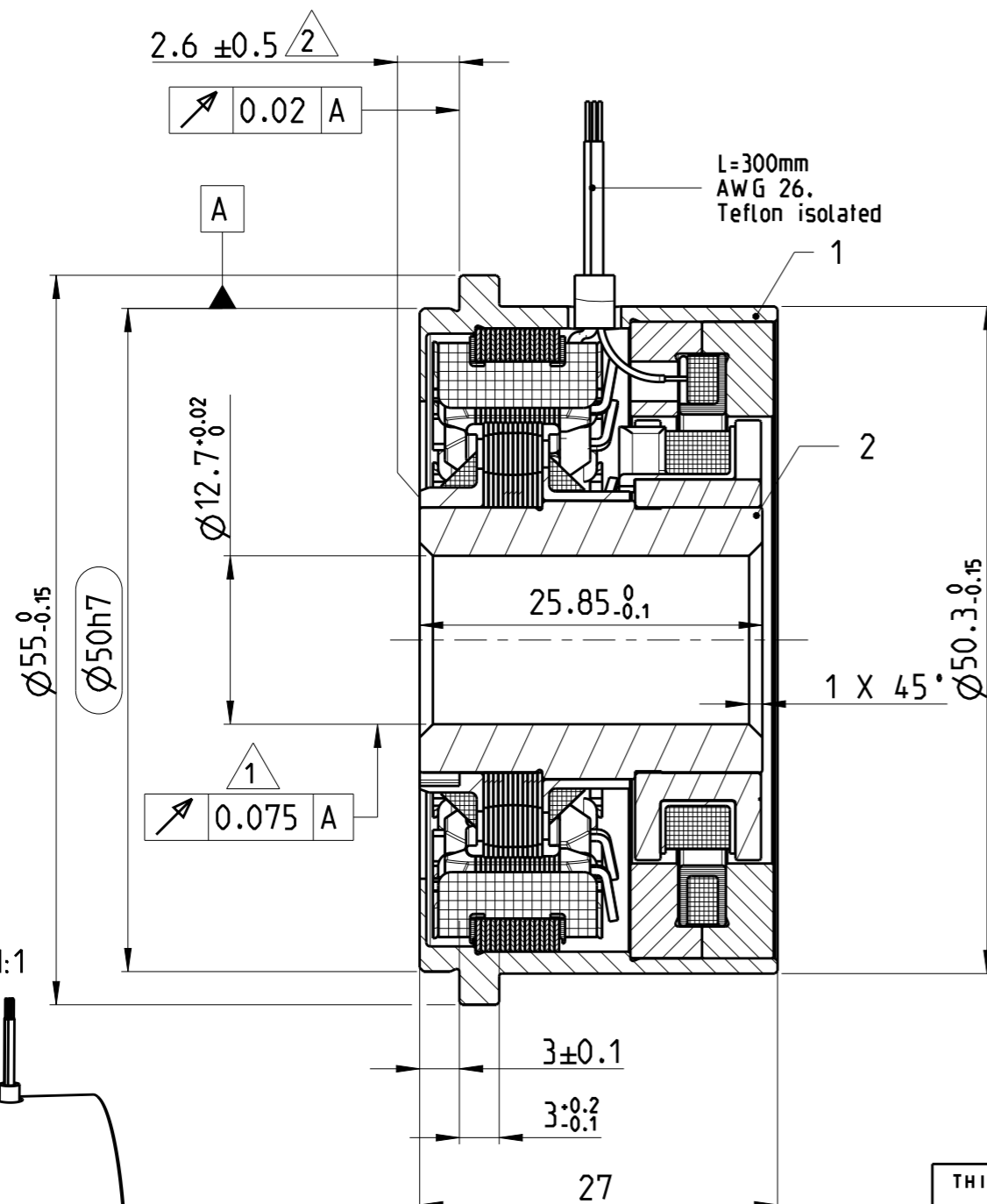
Attention:
The specified cable pairs have to twist once at 25mm :
blue and yellow / red and black /
red-white and yellow-white

Resolverstator u.-rotor nur paarig verwenden !

Use only paired stator and rotor !

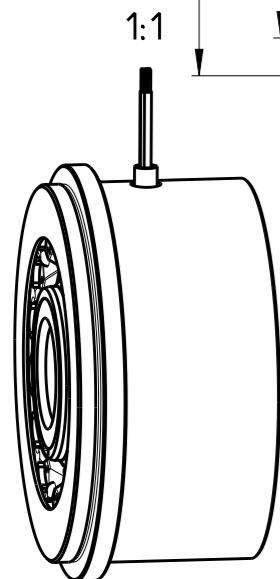
1 Gesamtschlag im eingebauten Zustand
concentricity in installed situa


2 Axialversatz
axial displacement



Signal	conductor colouring
S1(COS+)	RED
S2(SIN+)	YELLOW
S3(COS-)	BLACK
S4(SIN-)	BLUE
R1(REF+)	RED-WHITE
R2/R3(REF-)	YELLOW - WHITE

DIMENSIONS WITHOUT TOLERANCES : DIN ISO 2768-m



THIS DRAWING IS A CONTROLLED DOCUMENT.		DWN 20 JAN 2020 GOPALAKRISHNA HV	 TE Connectivity	
DIMENSIONS: mm		CHK 20 JAN 2020 SARFRAZ BILAL		
TOLERANCES UNLESS OTHERWISE SPECIFIED:		APVD 20 JAN 2020 ONDREJ DUSAN	NAME HOLLOW SHAFT RESOLVER / SZ.21 TYPE T2 CrMo V23401-T2072-B101	
0 PLC	±	PRODUCT SPEC	SIZE	RESTRICTED TO
1 PLC	±	APPLICATION SPEC	A3	
2 PLC	±	WEIGHT	00779	
3 PLC	±	CUSTOMER DRAWING	C-2367237	
4 PLC	±	SCALE	2:1	
ANGLES	±°	SHEET	1 OF 1	
FINISH	-	REV	A	