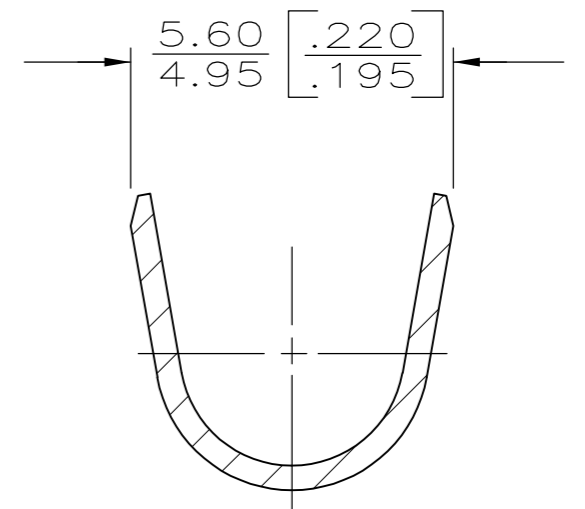
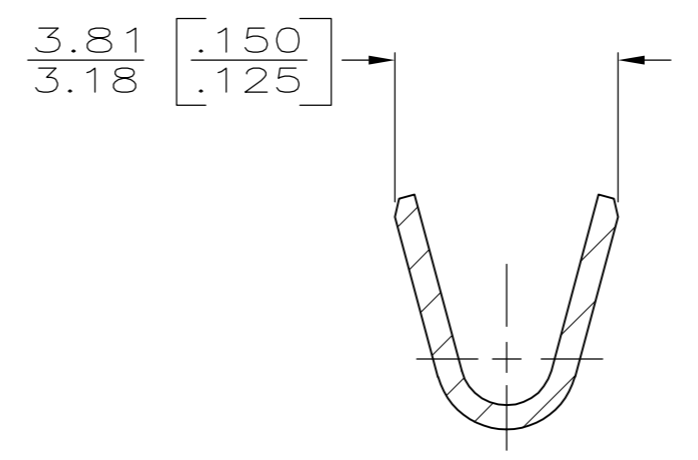
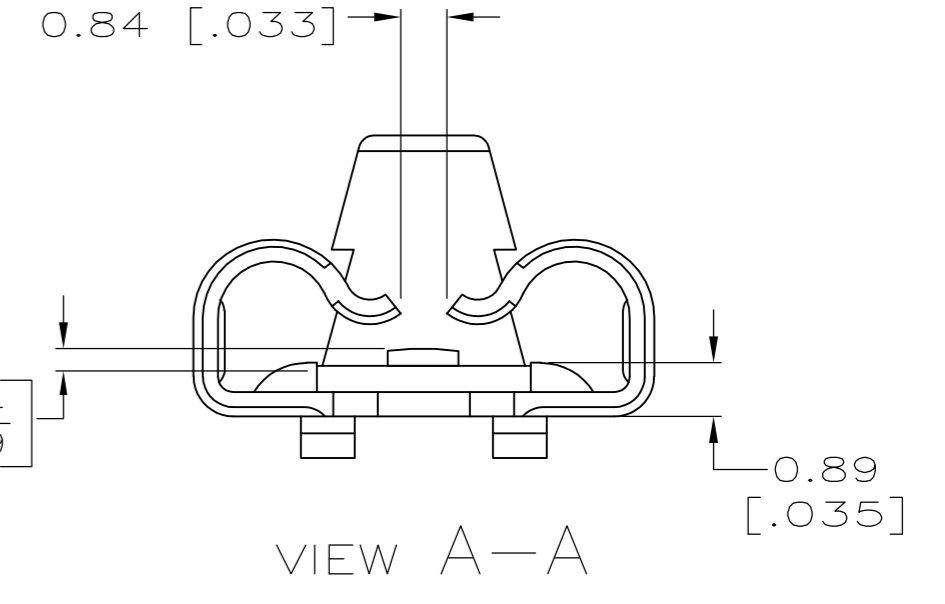
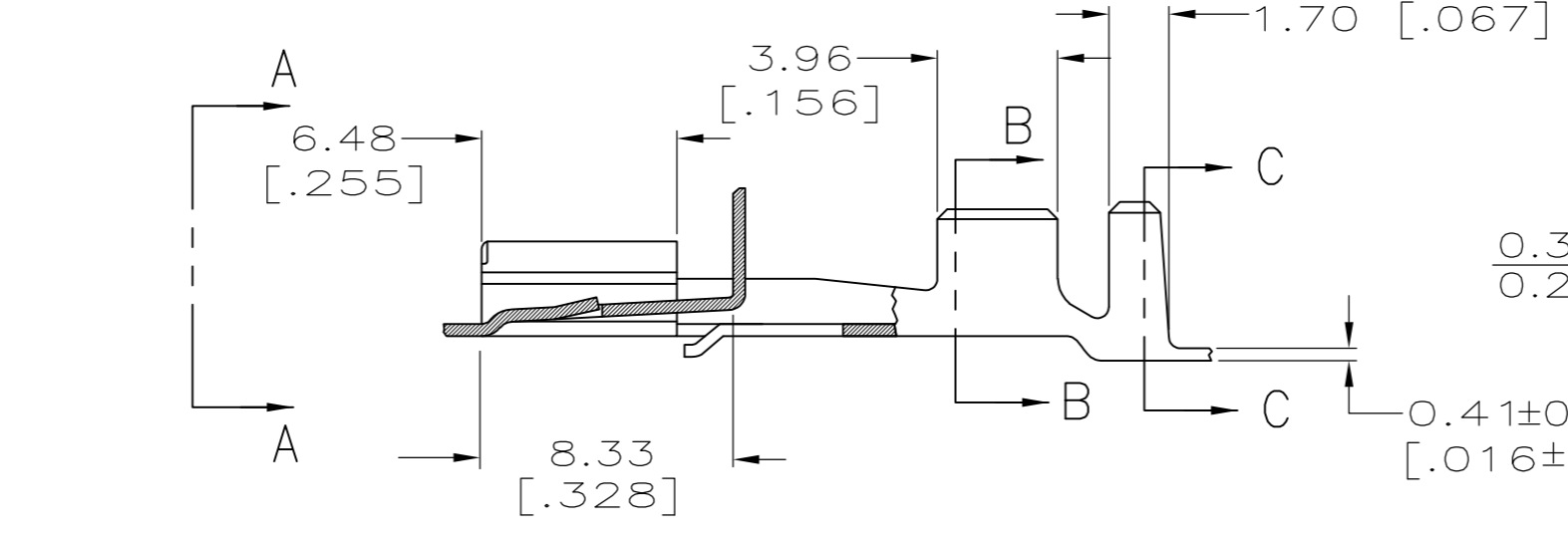
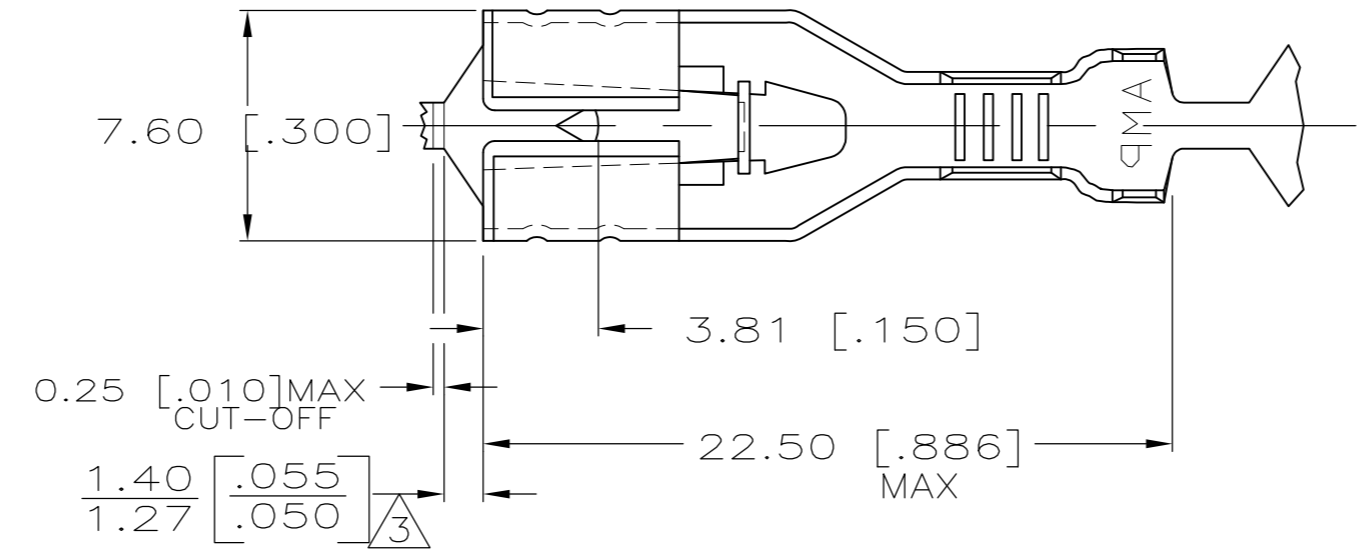
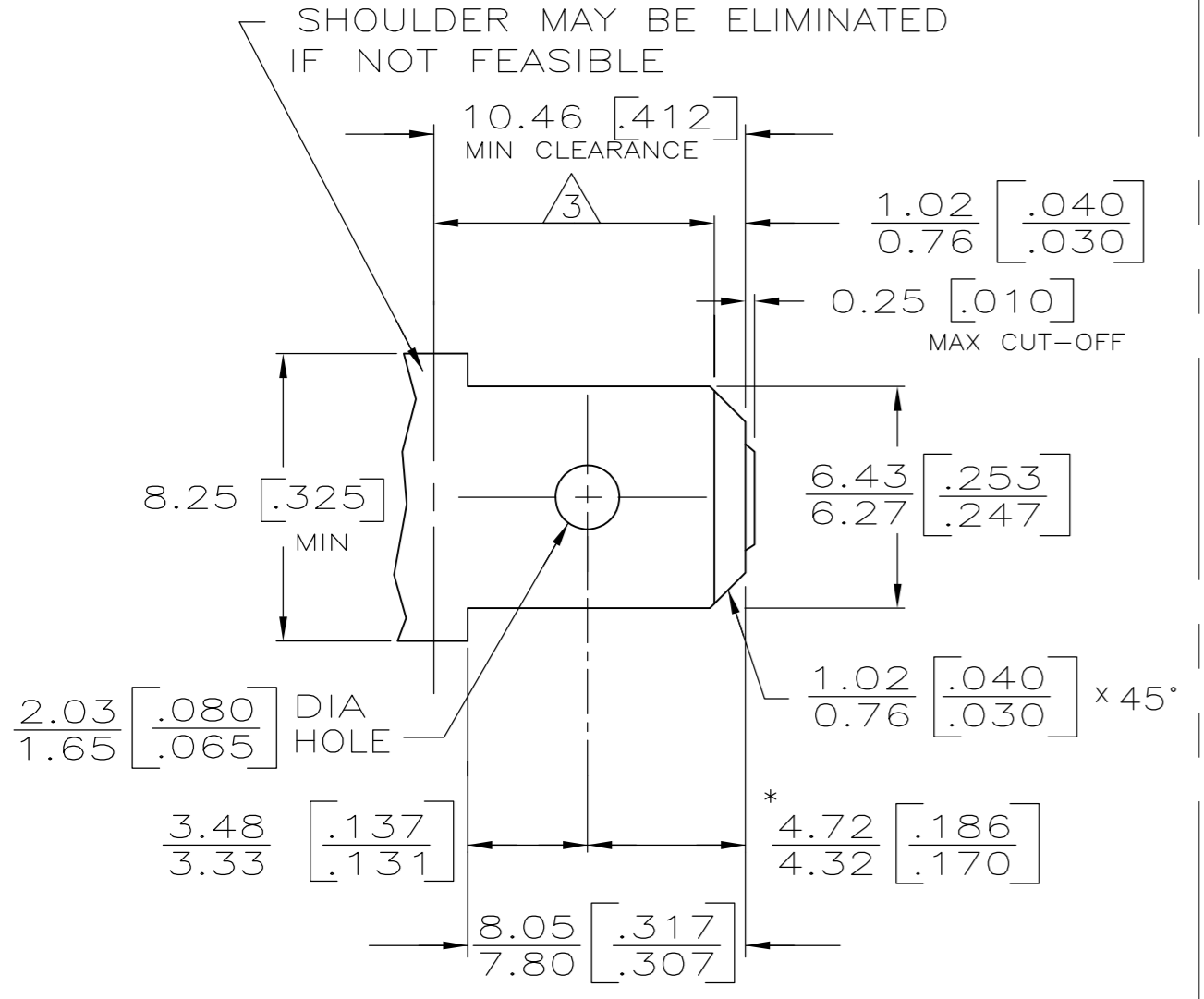


THIS DRAWING IS UNPUBLISHED. RELEASED FOR PUBLICATION
 © COPYRIGHT - By - ALL RIGHTS RESERVED.

LOC		DIST		REVISIONS			
P	LTR	DESCRIPTION		DATE	DWN	APVD	
AF	50	F		REVISED PER ECR-12-013486	08JAN13	KH	KR

SUGGESTED MATING TAB



- MATL: 1/2H BRASS OR NICKEL PL STEEL.
 - NO BURRS PERMISSIBLE AT HOLE.
 - MUST BE FLAT WITHIN 0.076 [.003] OVER THIS LENGTH.
 - TIN PLATING IS REQUIRED ON BRASS WHEN TERMINAL TEMP. IS OVER 225°F
 - HOLE MUST BE SYMMETRICAL ABOUT TAB Q WITHIN 0.076 [.003]
- * TO BE USED ONLY WHEN SHOULDER IS ELIMINATED.

- CONTINUOUS STRIP ON REELS.
- WIRE SIZE IS [#18-#14] AWG.
- THE 1.40 [.055] / 1.27 [.050] DIMENSION MUST BE MAINTAINED BY THE APPLICATOR CUT-OFF TO ENSURE THE PROPER LOCKING FUNCTION OF THE RECEPTACLE.
- INSULATION RANGE IS 2.29-3.94 [.090-.155] DIA.

63442-1
PART NO.

THIS DRAWING IS A CONTROLLED DOCUMENT.		DWN	JR RUTH	10/29/98	 TE Connectivity
DIMENSIONS: mm [INCHES]		CHK	MS FEHER	10/29/98	
TOLERANCES UNLESS OTHERWISE SPECIFIED:		APVD	D DECKER	10/29/98	
0 PLC ± - 1 PLC ± - 2 PLC ± 0.25 [.010] 3 PLC ± - 4 PLC ± - ANGLES ± -		PRODUCT SPEC	RECEPTACLE, POSI-LOCK, 6.35 [.250] SERIES		
MATERIAL	BRASS	FINISH	TIN	WEIGHT	-
CUSTOMER DRAWING		SCALE	4:1	SHEET	1 OF 1
SIZE		A2	CAGE CODE	00779	DRAWING NO
CAGE CODE		C=63442	RESTRICTED TO		-
REV		F			