

THIS DRAWING IS UNPUBLISHED.

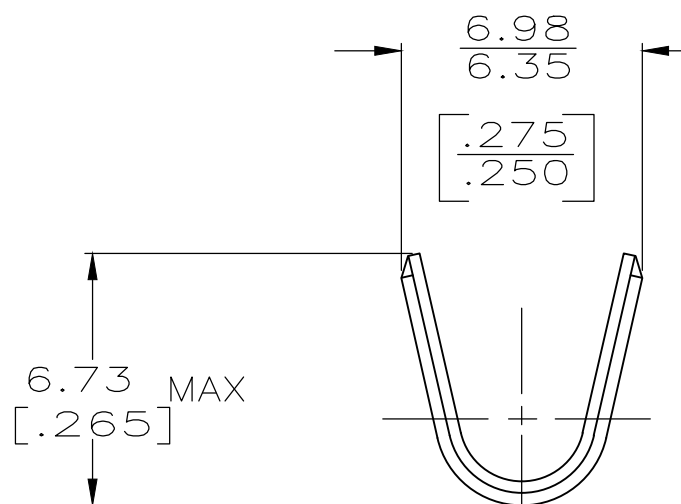
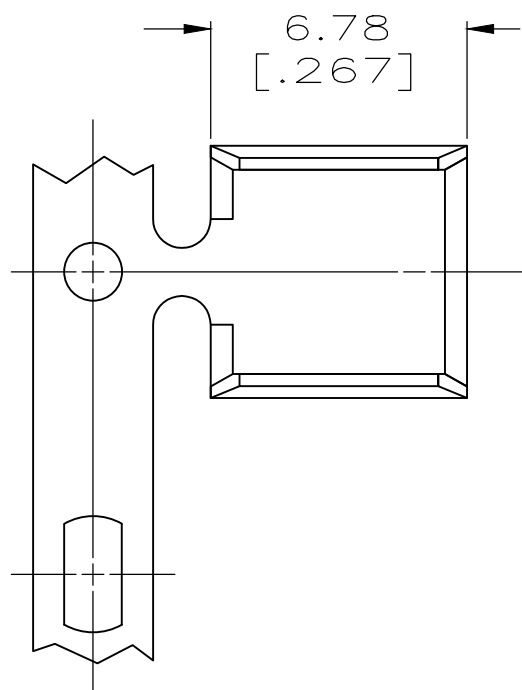
RELEASED FOR PUBLICATION

© COPYRIGHT - By -

ALL RIGHTS RESERVED.

LOC		DIST		REVISIONS			
P	LTR	DESCRIPTION	DATE	DWN	APVD		
AF	50	E4	REVISED PER	ECR-20-005648	19MAY20	LZ	EW

- 1 PRODUCT PROVIDED IN STRIP FORM ON REELS;
BREAKS MAY BE PRESENT
- 2 REF CRIMPING INFO:
4.57 [.180] CRIMP WIDTH AT CRIMP HEIGHT = (CMA+23,100) /285,700
5.58 [.220] CRIMP WIDTH AT CRIMP HEIGHT = (CMA+24,500) /330,000
- 3 REF SIMILAR SLICE P/N 1217967-X WITH SERRATIONS
- 4 LUBRICATION MAY BE REQUIRED TO FACILITATE CRIMPING. A PRODUCT LUBRICANT APPLICATOR IS AVAILABLE FOR TE CONNECTIVITY TERMINATION EQUIPMENT.



0.635±0.025
[.025±.001]

AMP Logo

TIN	2.5-8.1mm ²	63625-2
-	5,000-16,000 CMA	63625-1
FINISH	WIRE RANGE $\triangle 4$	PART NO

THIS DRAWING IS A CONTROLLED DOCUMENT.		DWN	P FORTNEY	10/3/91	STE TE Connectivity											
DIMENSIONS: INCHES		CHK	MS FEHER	10/4/91												
TOLERANCES UNLESS OTHERWISE SPECIFIED:		APVD	R WEAVILL	10/4/91												
<table border="0"> <tr><td>0 PLC</td><td>± -</td></tr> <tr><td>1 PLC</td><td>± -</td></tr> <tr><td>2 PLC</td><td>± 0.25 [.010]</td></tr> <tr><td>3 PLC</td><td>± -</td></tr> <tr><td>4 PLC</td><td>± -</td></tr> <tr><td>ANGLES</td><td>± -</td></tr> </table>		0 PLC	± -	1 PLC		± -	2 PLC	± 0.25 [.010]	3 PLC	± -	4 PLC	± -	ANGLES	± -	PRODUCT SPEC	
0 PLC	± -															
1 PLC	± -															
2 PLC	± 0.25 [.010]															
3 PLC	± -															
4 PLC	± -															
ANGLES	± -															
MATERIAL		APPLICATION SPEC		108-106466	SPLICE											
BRASS		FINISH		114-2088												
SEE TABLE		WEIGHT		-	RESTRICTED TO											
CUSTOMER DRAWING		SIZE	A3	CAGE CODE	00779											
		DRAWING NO	G-63625		SCALE											
		5:1		SHEET	1 OF 1											
		REV		E4												