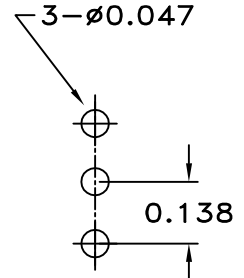
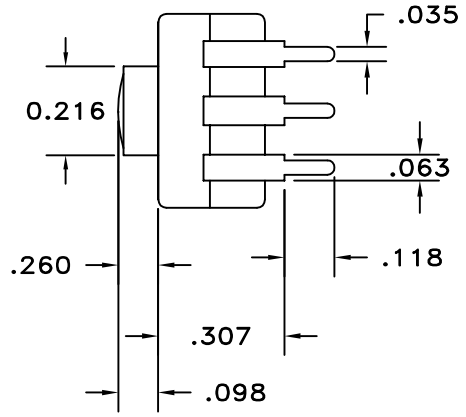
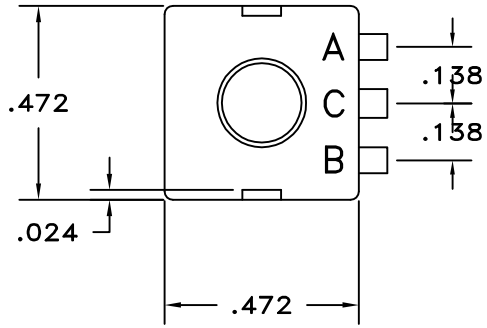
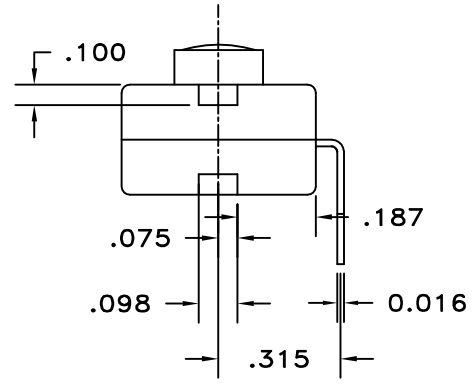


LTR	EN	DESCRIPTION	APPR	BY	DATE
A	-	INITIAL RELEASE	RB	NH	11-10-03
A1	-	ADDED ELECTRICAL RATING 12VDC, 500mA	MT	DC	08-27-12

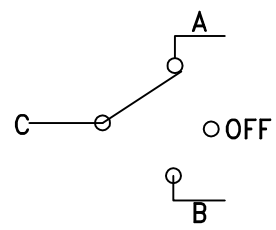


RECOMMENDED MOUNTING PATTERN

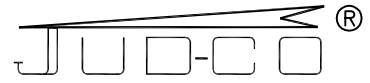


JUDCO INVENTORY NO. 50-0041-00  
 SWITCH TYPE: SPDT, J 977-5 (ON A- OFF ON B )  
 ELECTRICAL RATING: 12 VDC, 500mA

CUSTOMER:  
 CUSTOMER:  
 APPROVED BY: \_\_\_\_\_  
 DATE: \_\_\_\_\_



SCHEMATIC

DIMENSIONS IN INCHES DIMENSIONS ARE REFERENCE		
	HARBOR CITY CALIFORNIA	
DRAWN: NH 11-10-03	TITLE MINI FLPK, J977-5	
APPR: KJ 08-24-12	ON-OFF-ON, 3 RA TRMS	
ENGG: IS 08-24-12	DWG. NO. 1415-502	
1415U502A1.DWG	SHEET 1 OF 1	

This document embodies a product, component, and/or design proprietary to JUDCO MANUFACTURING INC., and which is protected either as a trade secret, by U.S. Patent, or by copyright. It may not be used in any way without written express consent of JUDCO MANUFACTURING INC.