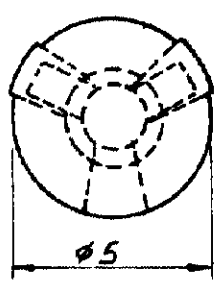
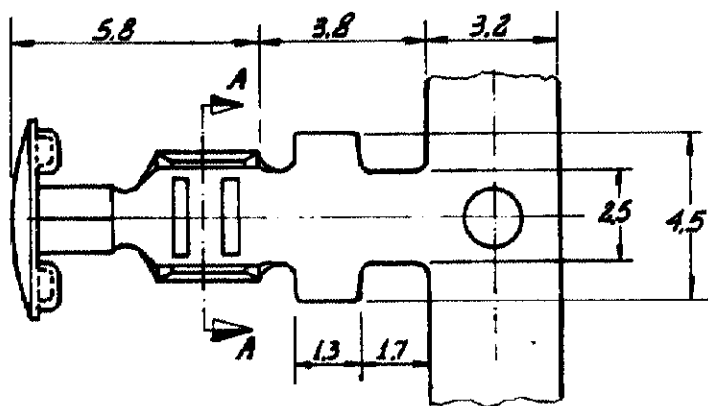


DRAWING MADE IN THIRD ANGLE PROJECTION

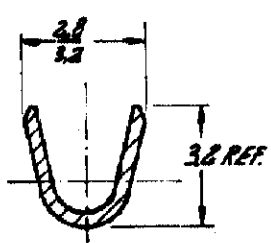
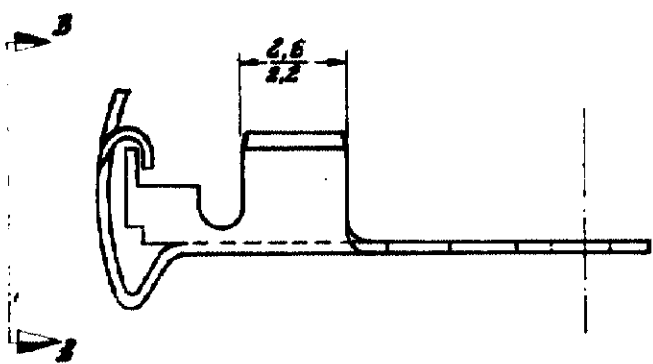
LOC	DIST
-----	------

© Copyright 1979 by AMP DO BRASIL - S. P. All International Rights Reserved. AMP Incorporated products covered by U. S. and Foreign patents and/or patents pending.

REVISIONS			
LTR	DESCRIPTION	DATE	APPROVED
-	WAS P19-23010	85-05-19	J. Pupo
A1	REVISED PER ECN-22-166554	19OCT22	AB



VISTA BB



SECCÃO AA

ESTANHADO	LATÃO	626519-2
OBSOLETE	LATÃO	626519-1
FINISH	MATERIAL	PART NO

UNLESS OTHERWISE SPECIFIED DIMENSIONS ARE IN mm  
 TOLERANCES ON:  
 DECIMALS ±  
 ANGLES ±

MATERIAL  
 VEJA TABELA

FINISH  
 VEJA TABELA

CONTRACT NO  
 DR J. Pupo 23-03-79  
 CHK [Signature] 23-03-79  
 APPD [Signature]

WIRE RANGE  
 20-16 AWG  
 INS. RANGE  
 H

TOLERANCE  
 ±0.3

NAME  
**TE** TE Connectivity

BUTTON CONTACT NO INSULATION SUPPORT

SIZE A LOC AP. DRAWING NO 626519

SCALE 6:1 SHEET 1 DE 1 REV A1