

THIS IS A C.A.D. GENERATED DRAWING
DO NOT MAKE MANUAL REVISIONS TO MASTER.



ISSUE NUMBER

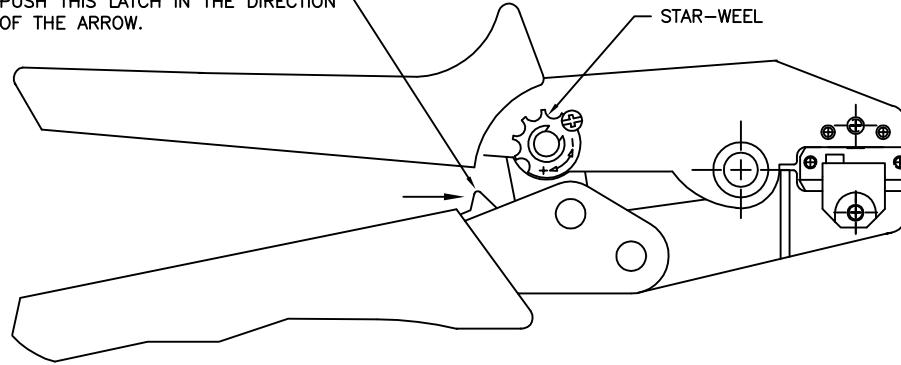
ORIGINAL ①

UPDATE WIRE AWG

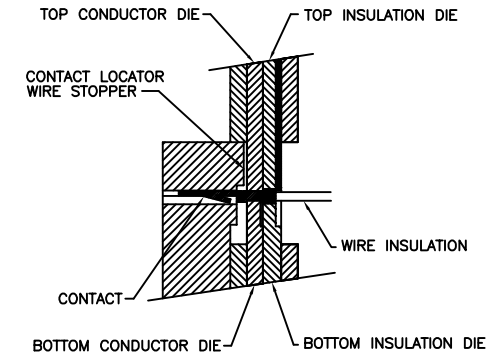
UPDATE PN TABLE

J.L. NOV.22/2022 ②

TO OPEN PARTIALLY CLOSED TOOL
PUSH THIS LATCH IN THE DIRECTION
OF THE ARROW.



STAR-WHEEL



TOP CONDUCTOR DIE TOP INSULATION DIE

CONTACT LOCATOR
WIRE STOPPER

WIRE INSULATION

CONTACT

BOTTOM CONDUCTOR DIE

BOTTOM INSULATION DIE


SECTION THROUGH DIE NEST
WITH CONTACT IN POSITION

NOTES:

WIRE AWG	CRIMP STRENGTH
24 AWG	5 LBS
26 AWG	3 LBS
28 AWG	2 LBS
30 AWG	1.7 LBS

- 1- THIS HAND TOOL IS DESIGNED FOR CRIMPING 24 TO 30 AWG WIRES TO EDAC CONTACT P/N 140-941-290.
- 2- RISK OF ELECTRIC SHOCK- DO NOT USE THIS ON LIVE WIRE.
- 3- CRIMPING INSTRUCTIONS:
 - OPEN THE TOOL, PLACE THE CONTACT INTO THE CORRECT DIE NEST.
 - PARTIALLY CLOSE THE TOOL UNTIL THE CONTACT IS HELD IN PLACE. INSERT THE WIRE INTO THE CONTACT.
 - CLOSE THE TOOL UNTIL THE RATCHET RELEASES. REMOVE THE CRIMPED CONTACT.
- 4- ADJUSTMENT OF CRIMP FORCE (WHEN NECESSARY):
 - LOOSEN THE SCREW
 - ADJUST THE STAR-WHEEL BY TURNING FROM (-) TO(+).
 - CHECK THE PRELOAD AND THE CRIMP FORCE.

TOOL PART NUMBER: 140-280-201

140 SERIES HAND CRIMP TOOL INSTRUCTIONS		ACAD REFERENCE NO. 140-280-201	
		DRAWN: K.L.	DATE: OCT.22/2020
 EDAC INC TORONTO, ONTARIO CANADA YOUR CONNECTION TO QUALITY & SERVICE		CHECKED:	DATE:
		SCALE: N.T.S.	SHEET 1 OF 2
THESE DRAWINGS AND SPECIFICATIONS ARE THE PROPERTY OF EDAC INC., AND SHALL NOT BE REPRODUCED, OR COPIED OR USED AS THE BASIS FOR THE MANUFACTURE OR SALE OF APPARATUS WITHOUT WRITTEN PERMISSION.		DRAWING NUMBER	
		140-280-201	
		ISSUE	
		2	

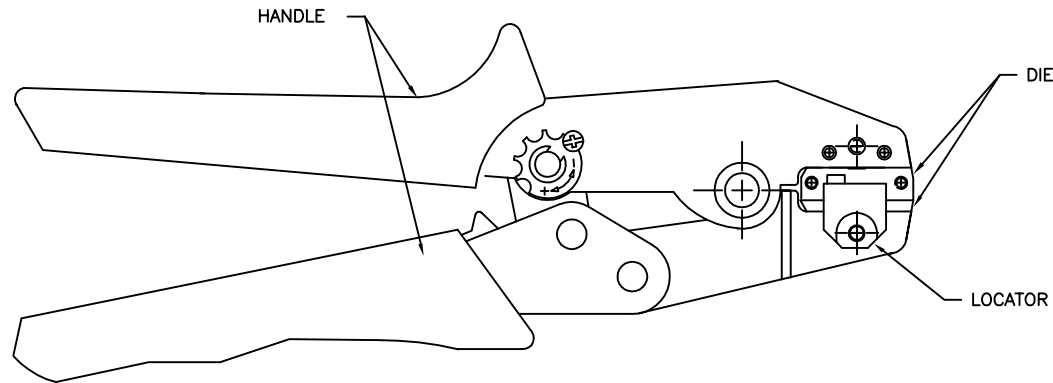
THIS IS A C.A.D. GENERATED DRAWING
DO NOT MAKE MANUAL REVISIONS TO MASTER.



ISSUE NUMBER

ORIGINAL

①

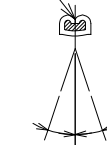


KEEP THE WIRE TO APPEAR

KEEP THE INSULATION TO APPEAR
BE SURE NOT TO ENCR OACH ON THE WIRE BARREL

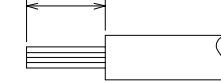
BELL MOUTH MUST EXIST

SEAM MUST BE CLOSED
WIRE MUST NOT BE EXPOSED



ROLLING $\pm 3^\circ$

1.5~2.0



WIRE STRIP LENGTH

CRIMP ASM*	LOCATOR KIT SET	HAND TOOL
140-280-201	140-282-001	140-281-201

* Assembly includes: Handle, Die and Locator. Locator is available for purchase separately.

140 SERIES HAND CRIMP TOOL INSTRUCTIONS



YOUR CONNECTION TO QUALITY & SERVICE

EDAC INC
TORONTO, ONTARIO
CANADA

THESE DRAWINGS AND SPECIFICATIONS
ARE THE PROPERTY OF EDAC INC., AND
SHALL NOT BE REPRODUCED, OR COPIED
OR USED AS THE BASIS FOR THE
MANUFACTURE OR SALE OF APPARATUS
WITHOUT WRITTEN PERMISSION.

ACAD REFERENCE NO. 140-280-201

DRAWN: K.L.

DATE: OCT.22/2020

CHECKED:

DATE:

SCALE: N.T.S.

SHEET 2 OF 2

DRAWING NUMBER

140-280-201

ISSUE

2