

- 1
- 2
- 3
- 4
- 5
- 6
- 7
- 8
- 9
- 10
- 11
- 12
- 13
- 14
- 15
- 16
- 17
- 18

MATERIAL

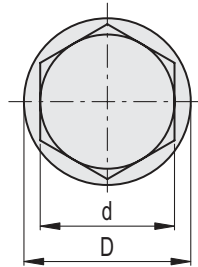
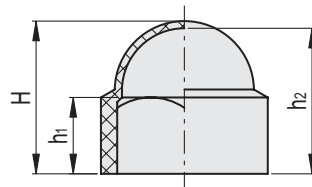
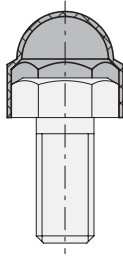
Polyethylene (PE).

STANDARD EXECUTIONS

- **NCD**: RAL 9005 black colour, matte finish.
- **NCD-CR**: chrome-plated, matte finish.

FITTING

The coupling on nuts or bolts can be made either by hand or by a mallet.



METRIC

Conversion Table			
1 mm = 0,039 inch			
d			
mm	inch	mm	inch
6.9	0.27	23.7	0.93
7.9	0.31	26.8	1.05
9.8	0.38	29.8	1.17
12.8	0.50	31.8	1.25
16.7	0.66	35.8	1.41
18.7	0.74	40.8	1.61
21.7	0.85	45.8	1.80

Code	Description	Code	Description	D	d	H	h1	h2	Nut or bolt thread	Hexagonal spanner*	⚖️
435804	NCD.4	435904	NCD.4-CR	9	6.9	7.8	3.5	6.5	M4	7	1
435805	NCD.5	435905	NCD.5-CR	10.9	7.9	10.4	6	9.3	M5	8	1
435806	NCD.6	435906	NCD.6-CR	12.9	9.8	12.4	7	11.4	M6	10	1
435808	NCD.8	435908	NCD.8-CR	16.3	12.8	15	7	14	M8	13	1
435810	NCD.10	435910	NCD.10-CR	20.3	16.7	19.1	9	17.2	M10	17	2
435812	NCD.12	435912	NCD.12-CR	22.6	18.7	20	10.1	17.9	M12	19	2
435814	NCD.14	435914	NCD.14-CR	27	21.7	23.5	11.5	22	M14	22	2
435816	NCD.16	435916	NCD.16-CR	29.2	23.7	26	14.6	24	M16	24	2
435818	NCD.18	435918	NCD.18-CR	33.1	26.8	29.1	15.3	26.9	M18	27	6
435820	NCD.20	435920	NCD.20-CR	35.7	29.8	32.8	17.9	30.2	M20	30	7
435822	NCD.22	435922	NCD.22-CR	39.3	31.8	35.5	19	33.2	M22	32	11
435824	NCD.24	435924	NCD.24-CR	44	35.8	40	20	37.6	M24	36	12
435827	NCD.27	435927	NCD.27-CR	49.5	40.8	46.5	23	44.5	M27	41	15
435830	NCD.30	435930	NCD.30-CR	55.1	45.8	50.2	24.5	47.7	M30	46	22

* Apply the product only to nuts and bolts with hexagonal spanner dimension as shown in table.