



preliminary

Schottky Diode

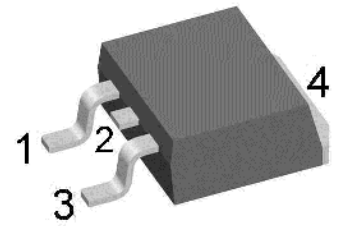
V_{RRM}	=	25 V
I_{FAV}	= 2x	10 A
V_F	=	0.37 V

High Performance Schottky Diode
 Low Loss and Soft Recovery
 Common Cathode

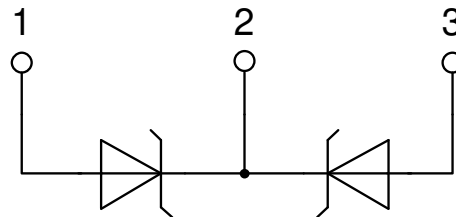
Part number

DSSK18-0025BS

Marking on Product: DSSK18-0025BS



Backside: cathode



Features / Advantages:

- Very low V_f
- Extremely low switching losses
- Low I_{rm} values
- Improved thermal behaviour
- High reliability circuit operation
- Low voltage peaks for reduced protection circuits
- Low noise switching

Applications:

- Rectifiers in switch mode power supplies (SMPS)
- Free wheeling diode in low voltage converters

Package: TO-263 (D2Pak)

- Industry standard outline
- RoHS compliant
- Epoxy meets UL 94V-0

Disclaimer Notice

Information furnished is believed to be accurate and reliable. However, users should independently evaluate the suitability of and test each product selected for their own applications. Littelfuse products are not designed for, and may not be used in, all applications. Read complete Disclaimer Notice at www.littelfuse.com/disclaimer-electronics.



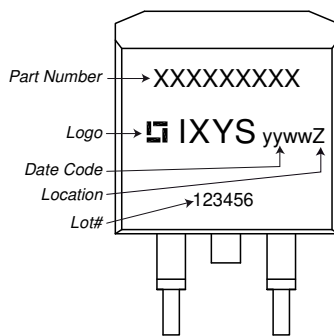
Schottky				Ratings				
Symbol	Definition	Conditions		min.	typ.	max.	Unit	
V_{RSM}	max. non-repetitive reverse blocking voltage					25	V	
V_{RRM}	max. repetitive reverse blocking voltage					25	V	
I_R	reverse current, drain current	$V_R = 25\text{ V}$	$T_{VJ} = 25^\circ\text{C}$			10	mA	
		$V_R = 25\text{ V}$	$T_{VJ} = 100^\circ\text{C}$			40	mA	
V_F	forward voltage drop	$I_F = 10\text{ A}$	$T_{VJ} = 25^\circ\text{C}$			0.45	V	
		$I_F = 20\text{ A}$				0.56	V	
		$I_F = 10\text{ A}$	$T_{VJ} = 125^\circ\text{C}$			0.37	V	
		$I_F = 20\text{ A}$				0.51	V	
I_{FAV}	average forward current	$T_C = 140^\circ\text{C}$ rectangular $d = 0.5$	$T_{VJ} = 150^\circ\text{C}$			10	A	
V_{F0}	threshold voltage	} for power loss calculation only				0.20	V	
r_F	slope resistance					14.6	mΩ	
R_{thJC}	thermal resistance junction to case					1.7	K/W	
R_{thCH}	thermal resistance case to heatsink			0.25			K/W	
P_{tot}	total power dissipation			$T_C = 25^\circ\text{C}$			75	W
I_{FSM}	max. forward surge current	$t = 10\text{ ms}; (50\text{ Hz}), \text{ sine}; V_R = 0\text{ V}$		$T_{VJ} = 45^\circ\text{C}$			140	A
C_J	junction capacitance	$V_R = 5\text{ V}$ $f = 1\text{ MHz}$		$T_{VJ} = 25^\circ\text{C}$	639		pF	



preliminary

Package TO-263 (D2Pak)			Ratings			
Symbol	Definition	Conditions	min.	typ.	max.	Unit
I_{RMS}	RMS current	per terminal			35	A
T_{VJ}	virtual junction temperature		-55		150	°C
T_{op}	operation temperature		-55		125	°C
T_{stg}	storage temperature		-55		150	°C
Weight				1.5		g
F_C	mounting force with clip		20		60	N

Product Marking



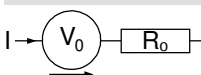
Ordering	Ordering Number	Marking on Product	Delivery Mode	Quantity	Code No.
Standard	DSSK18-0025BS-TRL	DSSK18-0025BS	Tape & Reel	800	499099
Alternative	DSSK18-0025BS-TUB	DSSK18-0025BS	Tube	50	523741

Similar Part	Package	Voltage class
DSB30C30PB	TO-220AB (3)	30

Equivalent Circuits for Simulation

* on die level

$T_{VJ} = 150^{\circ}C$

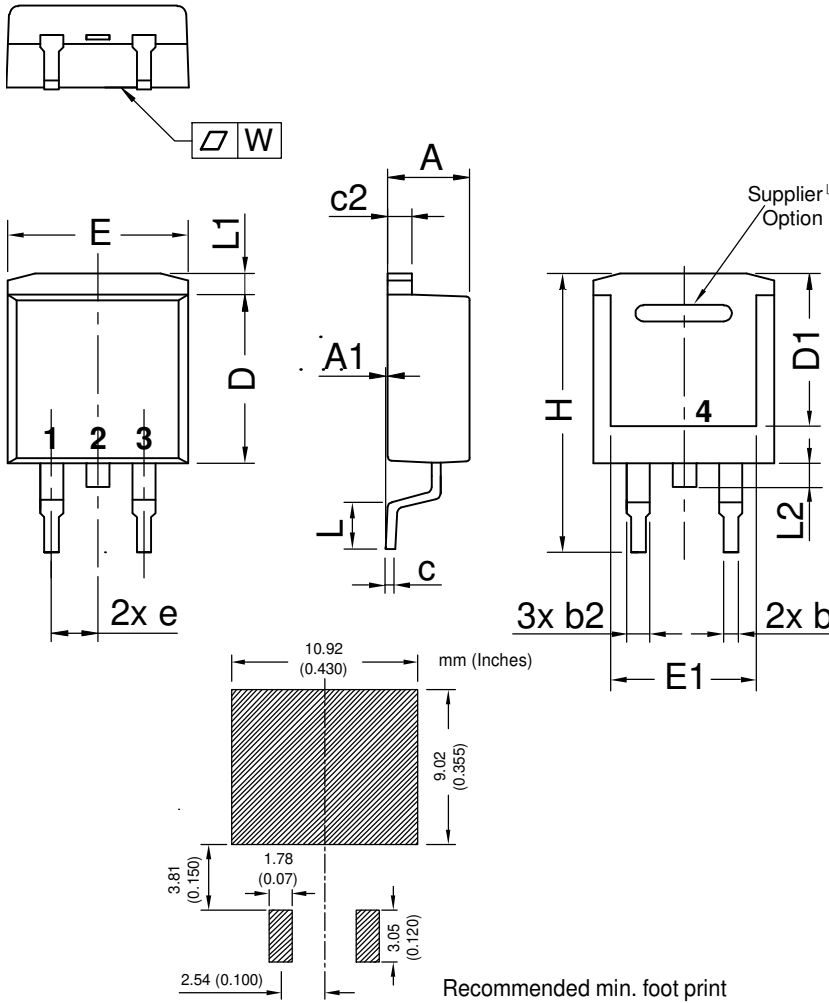


Schottky

$V_{0\ max}$	threshold voltage	0.2	V
$R_{0\ max}$	slope resistance *	11.4	mΩ



Outlines TO-263 (D2Pak)



Dim.	Millimeter		Inches	
	min	max	min	max
A	4.06	4.83	0.160	0.190
A1	typ. 0.10		typ. 0.004	
A2	2.41		0.095	
b	0.51	0.99	0.020	0.039
b2	1.14	1.40	0.045	0.055
c	0.40	0.74	0.016	0.029
c2	1.14	1.40	0.045	0.055
D	8.38	9.40	0.330	0.370
D1	8.00	8.89	0.315	0.350
D2	2.5		0.098	
E	9.65	10.41	0.380	0.410
E1	6.22	8.50	0.245	0.335
e	2.54 BSC		0.100 BSC	
e1	4.28		0.169	
H	14.61	15.88	0.575	0.625
L	1.78	2.79	0.070	0.110
L1	1.02	1.68	0.040	0.066
W	typ. 0.02	0.040	typ. 0.0008	0.002

All dimensions conform with and/or within JEDEC standard.

