

# 微型直流减速电机仕様规格书

产品型号：GM25-370-2765-35-12D8

## 1. 标准使用条件 (Standard Operating Conditions)

NO.	項目 (Item)	規格 (Specification)	检验方法 (Test Method)
1.1	额定电压 ( Rated Voltage )	DC 6.0V	电压表 ( Multimeter )
1.2	速比 ( Gear Ratio)	1/35	
1.3	马达转向 ( Rotation )	CW	手感 (Handle)
1.4	姿势 ( Motor Position )	检查时水平 (All position in horizontal)	手感 (Handle)
1.5	检测时时温度范围 Temperature	0 Degree - 30 Degree Celsius	温度计 ( Thermometer )
1.6	检测时时湿度范围 Humidity	30% ~ 95%	湿度计 ( Hygroscope )

## 2. 电机性能 (Performance Of Motors)

NO.	項目 (Item)	規格 (Specification)	检验方法 (Test Method)
2.1	空载转速 ( No-load Speed )	10500±10%rpm	转速表 (Flash Speed Indicator)
2.2	空载电流 (No-load Current )	150mA(Max)	电流表 (DC Power Supply)
2.3	堵转电流 (Stall Current)	5300mA(Max)	电流表 (DC Power Supply)
2.4	堵转力矩 ( Stall Torque)	200g.cm	扭力计 (Torque Measure)

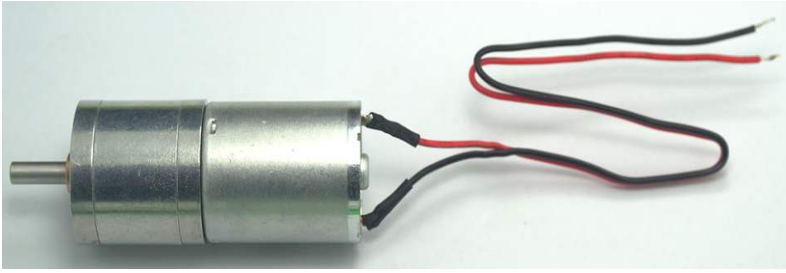
## 3. 整机性能 ( Performance of Gear motors)

NO.	項目 (Item)	規格 (Specification)	检验方法 (Test Method)
3.1	输出转速 (Output Speed)	310±10%rpm	转速表 (Flash Speed Indicator)
3.2	空载电流 (No-load Current)	250mA(Max)	电流表 (DC Power Supply)
3.3	堵转电流 (Stall Current)	5300mA(Max)	电流表 (DC Power Supply)
3.4	堵转力矩 (Stall Torque)	7kg.cm	扭力计 (Torque Measure)
3.5	负载力矩 ( Rated Torque )	1000g.cm	扭力计 (Torque Measure)
3.6	负载电流 ( Rated Current )	950mA(Max)	电流表 (DC Power Supply)
3.7	负载转速 ( Rated Speed )	250±10%rpm	转速表 (Flash Speed Indicator)
3.8	噪音 30CM ( Noise )	56dB	分贝仪 ( Digital Sound Levld Meter )

## 4. 基本尺寸 (The Dimension )

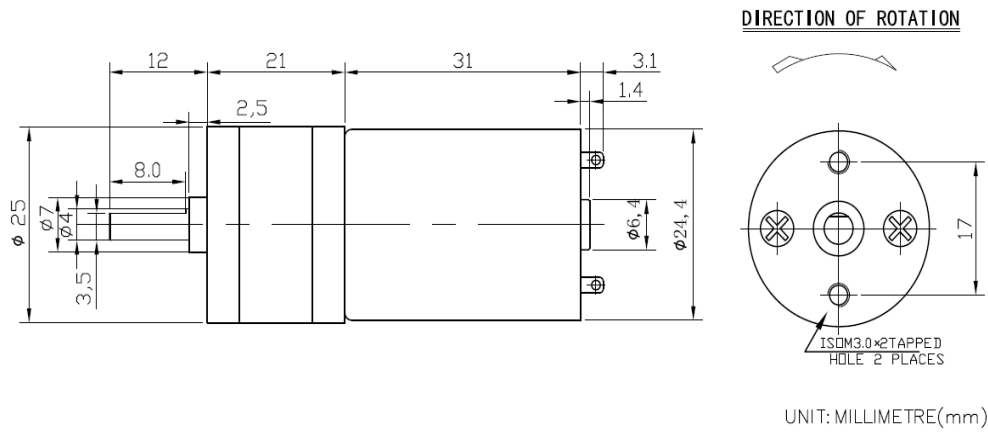
NO.	項目 (Item)	規格 ( Specification)	检验方法 (Test Method)
4.1	轴伸尺寸 ( The Outside Shaft Length )	12mm	卡尺 (Vernier Calipers)
4.2	轴向间隙 (Shaft End Play)	0.05-0.50mm	治具 (Frock)
4.3	螺孔 (Screw Size )	M3.0	治具 (Frock)
4.4	出轴直径 (Dia.of shaft)	φ4mmD8	卡尺 (Vernier Calipers)
4.5	外形安装尺寸 (Outline Mounting Dimension)	Refer to the Outline Drawing	

## 5. 产品照片 (The product photos )



电机端子焊 200mm引线 , 22AWG线  
引线剥头3~5mm , 并浸锡  
焊接位置加热塑管

## 6. 产品外形图 (Product drawings )



## 7. 曲线图 (Curve drawings )

