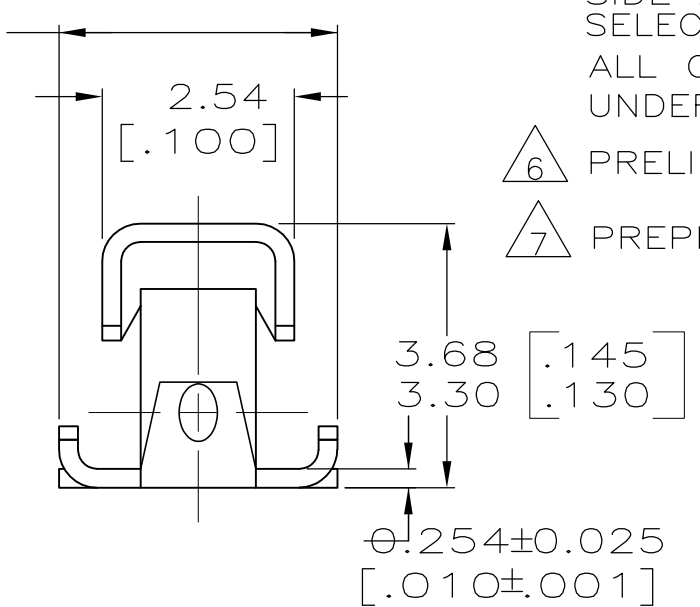
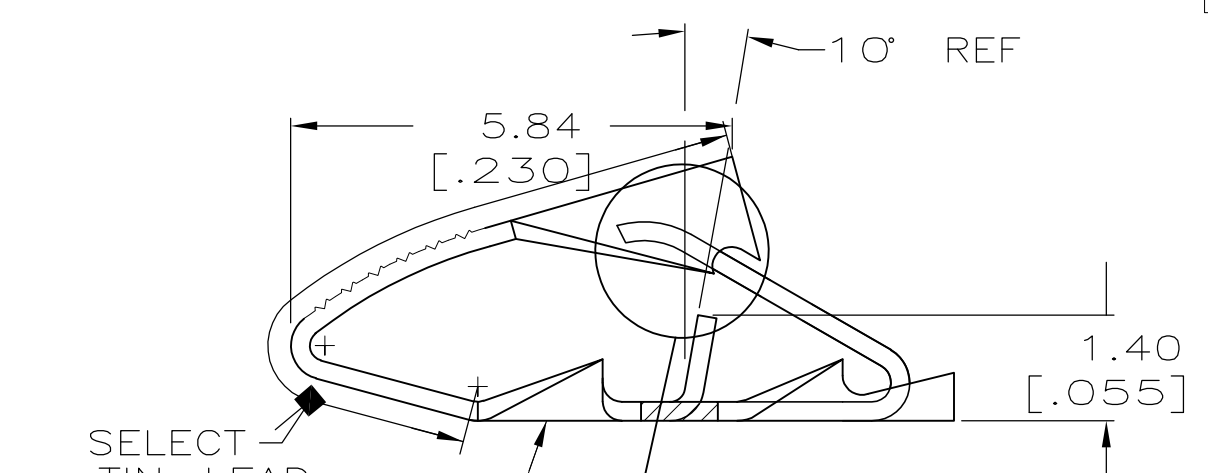
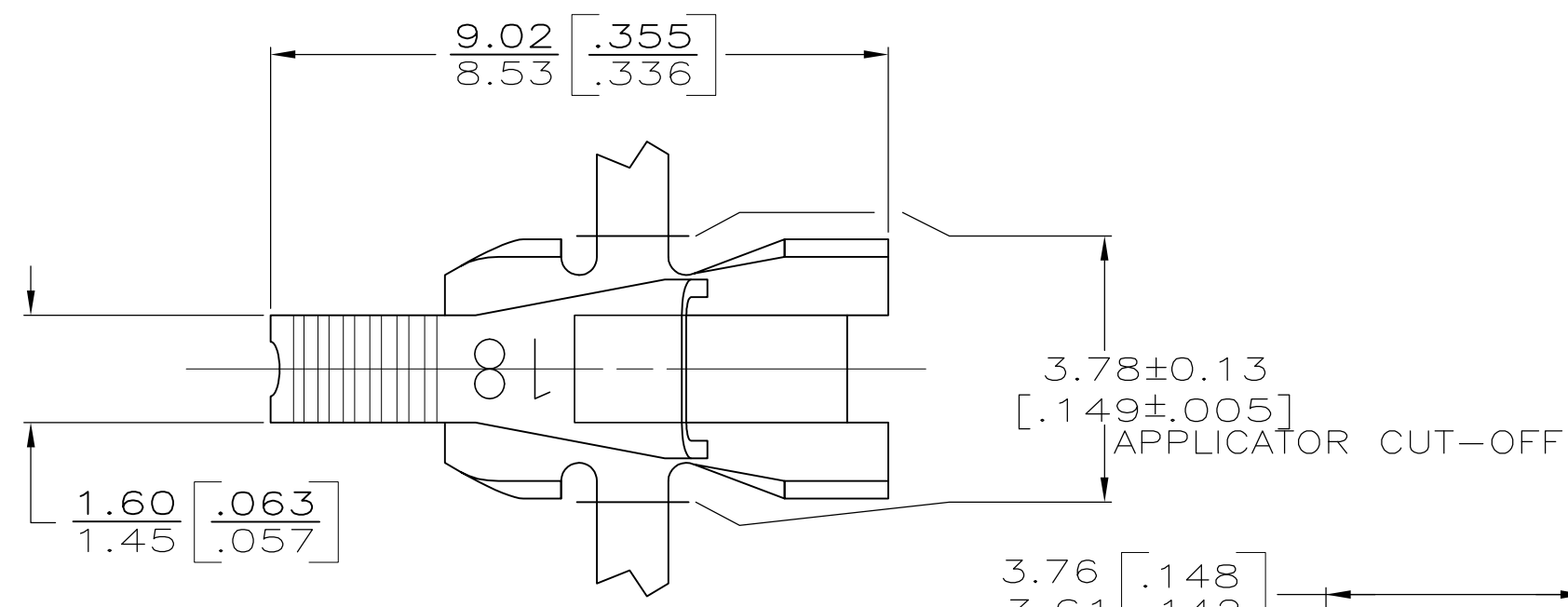


THIS DRAWING IS UNPUBLISHED. RELEASED FOR PUBLICATION
 © COPYRIGHT BY TYCO ELECTRONICS CORPORATION. ALL RIGHTS RESERVED.

LOC	DIST	REVISIONS					
AF	50	P	LTR	DESCRIPTION	DATE	DWN	APVD
			E3	REVISED PER ECR-14-011704	07AUG14	GRZ	JL

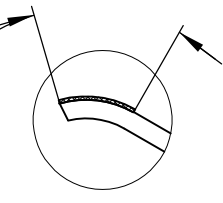
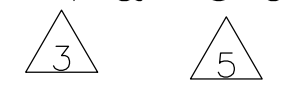


- 1 CONTINUOUS STRIP ON REELS WITH TERMINALS LOCATED ON 6.10±0.08 [.240±.003] CENTERS.
- △2 IDENTIFICATION NUMBER 18 FOR MAGNET WIRE RANGE.
- △3 0.000762[.000030] MIN SELECT GOLD ON ONE SIDE AS SHOWN, 0.00127[.000050] MIN SELECT TIN-LEAD ON BOTH SIDES AS SHOWN ALL OVER 0.00127[.000050] MIN NICKEL UNDERPLATE
- △4 0.002032 [.000080] MIN TIN OVER 0.00127 [.000050] MIN NICKEL WITH ANTI-FRETTING LUBE ON POKE-IN LEAF AREA.
- △5 0.000762[.000030] MIN SELECT GOLD ON ONE SIDE AS SHOWN, 0.00127[.000050] MIN SELECT TIN ON BOTH SIDES AS SHOWN ALL OVER 0.00127[.000050] MIN NICKEL UNDERPLATE
- △6 PRELIMINARY - NOT FOR PRODUCTION.
- △7 PREPRODUCTION - FASR REQUIRED

SELECT TIN-LEAD -1 & -3 ONLY



SELECT GOLD -1 & -3 ONLY



OBSOLETE		△5	△7	63844-3
OBSOLETE	0.10-0.25mm [#38-#30] AWG	△4	△6	63844-2
OBSOLETE		△3		63844-1
COPPER MAGNET WIRE RANGE		FINISH		PART NO.

THIS DRAWING IS A CONTROLLED DOCUMENT.		DWN R.GRZYBOWSKI 3/MAY/95	Tyco Electronics Corporation Harrisburg, Pa 17105-3608	
DIMENSIONS: MM [INCHES]		CHK MICHAEL S. FEHER 3/MAY/95	NAME	
TOLERANCES UNLESS OTHERWISE SPECIFIED:		APVD TL SHUTTER 3/MAY/95	PRODUCT SPEC	
0 PLC ± -		108-2016		
1 PLC ± -		APPLICATION SPEC		
2 PLC ± 0.25 [.010]		114-2047		
3 PLC ± -		SIZE	CAGE CODE	DRAWING NO
4 PLC ± -		A3 00779		C-63844
ANGLES ± -		RESTRICTED TO		
MATERIAL H02 BRASS	FINISH SEE TABLE	WEIGHT -		SCALE 10:1
CUSTOMER DRAWING		SHEET 1 OF 1		REV E3