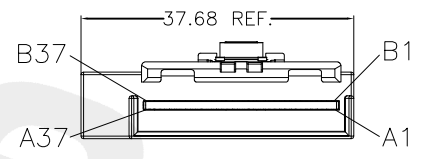
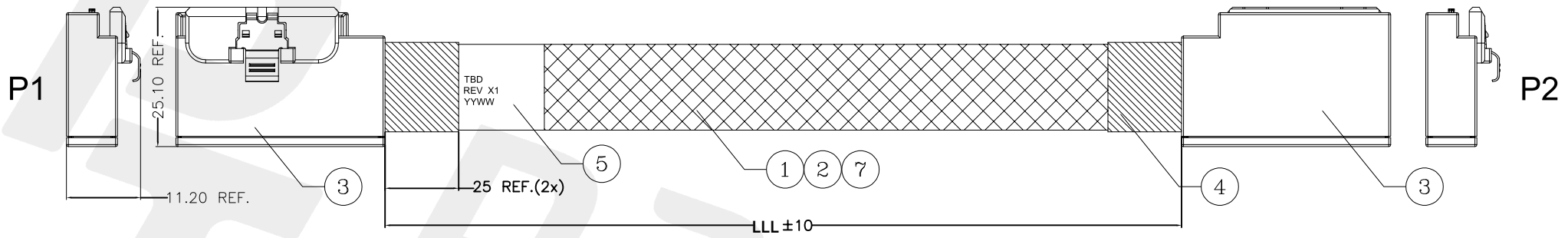


NOTICE: ALL PARTS MUST MEET TO RoHS REQUIREMENTS

REV.	DESCRIPTION	DRAWN	APPROVED	DATE
X1	NEW DRAWING	A. ZAN	D. CHOI	2022.03.31



ITEM NO.	LENGTH (LLL)
PT-SAS-SL8-LSE-LP-025	250mm ± 15
PT-SAS-SL8-LSE-LP-050	500mm ± 15
PT-SAS-SL8-LSE-LP-075	750mm ± 15
PT-SAS-SL8-LSE-LP-100	1000mm ± 15

ITEM	NAME	Q'TY	DESCRIPTION	NOTE
6	WIRE	A/R	32AWG 5P FLAT WIRE	
5	LABEL	1	WHITE LABEL, 60*30MM(REF)	
4	ACETATE TAPE	A/R	ACETATE TAPE, BLACK	
3	CONNECTOR	2	LP SLIMSAS 8X L/S CABLE PLUG,AU30u" 85ohm	
2	WEAVE	A/R	PLASTIC BRAID SLEEVE, PET, BLACK,OD:10.0MM	
1	SAS CABLE	A/R	TWINAX CABLE: UL20744 (30AWG*2C+2D)+AM,SILVERED PLATED BLUE,85 ohm	

Customer P/N:	N/A
Customer Rev.:	X1
PART NO.	PT-SAS-SL8-LSE-LP-LLL
APPROVED	D. CHOI
CHECKED	D. CHOI
DRAWN	A. ZAN
DATE	2022-03-31

pactech
WIRE CONNECT & CABLE SOLUTIONS

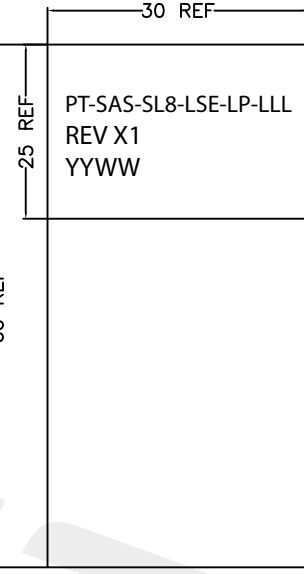
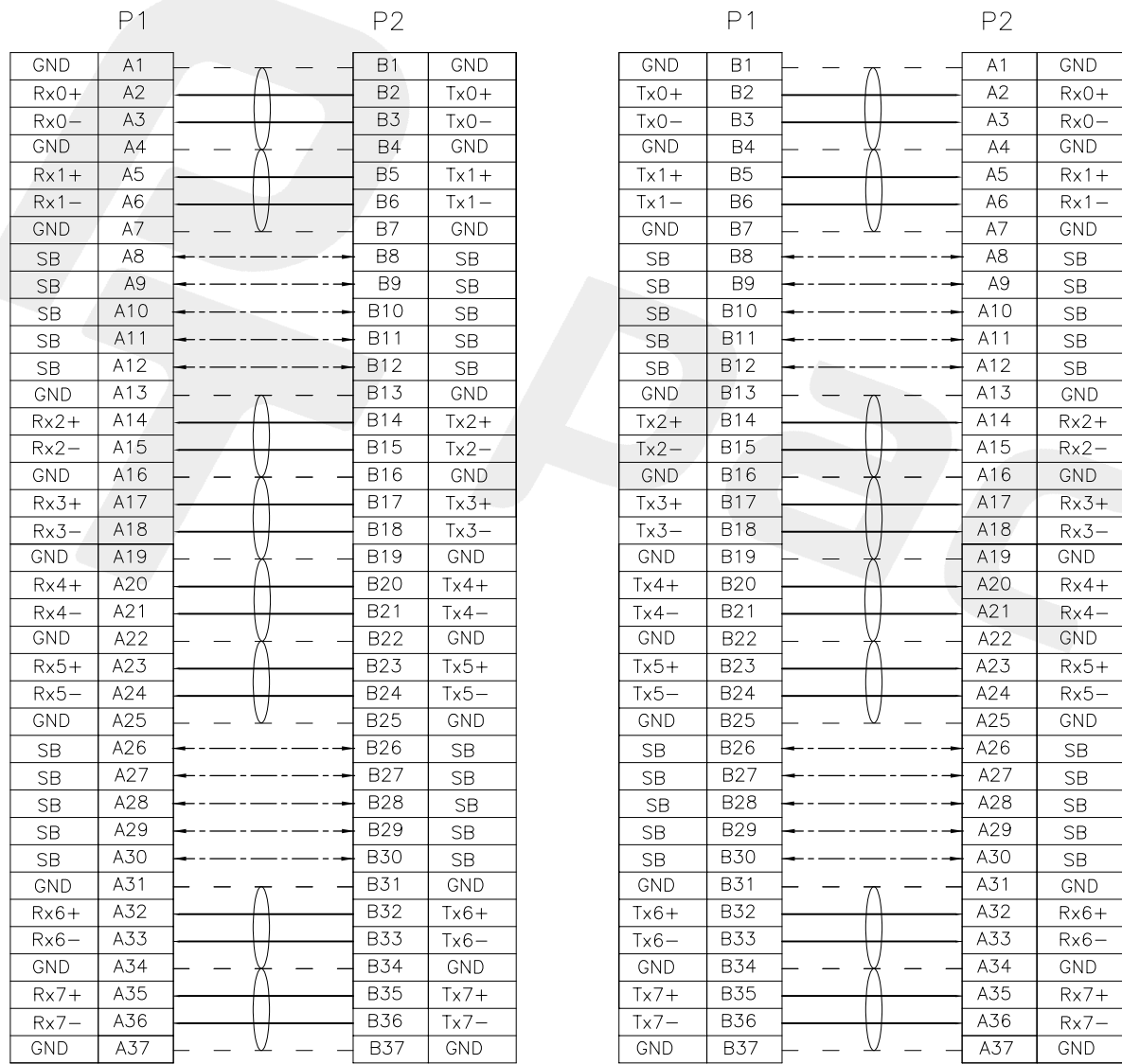
TITLE:
 SLIMSAS 8i LSE LP TO SLIMSAS 8i LSE LP CABLE ASS'Y

UNIT	SCALE	SHEET	REV
MM	NONE	1/2	X1

- 1. .* ±0.1
- 2. .** ±0.1
- 3. .** ±0.05
- 4. FRACT. ±1/32"
- 5. ANGULAR ±1/2°

NOTICE: ALL PARTS MUST MEET TO RoHS REQUIREMENTS

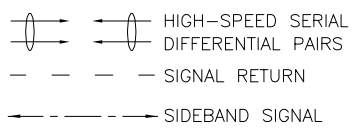
WIRING TABLE



FONT: ARIAL
HEIGHT: 2.0mm Min

- TEST CONDITIONS:
- 100% OPEN & SHORT & MISS-WIRING & INTERMITTENCE TEST.
 - CONDUCTIVE RESISTANCE: 3Ω MAX.
 - INSULATION RESISTANCE: 10 MΩ
 - HI-POT TEST: 300VDC FOR 10ms.
 - THIS PRODUCT MEETS SAS3.0

A1,A4,A7,A10,A13,A16,A19,A22,A25,A28,A31,A34,A37,
B1,B4,B7,B10,B13,B16,B19,B22,B25,B28,B31,B34,B37 Grounded on PCB



1. .* ±0.1 2. .** ±0.1 3. .*** ±0.05 4. FRACT. ±1/32" 5. ANGULAR ±1/2°	Customer P/N:	N/A		
	Customer Rev.:	X1		
	PART NO.	PT-SAS-SL8-LSE-LP-LLL	TITLE:	SLIMSAS 8i LSE LP TO SLIMSAS 8i LSE LP CABLE ASS'Y
	APPROVED	D. CHOI	UNIT	MM
	CHECKED	D. CHOI	SCALE	NONE
DRAWN	A. ZAN	SHEET	2/2	
DATE	2022-03-31	REV	X1	