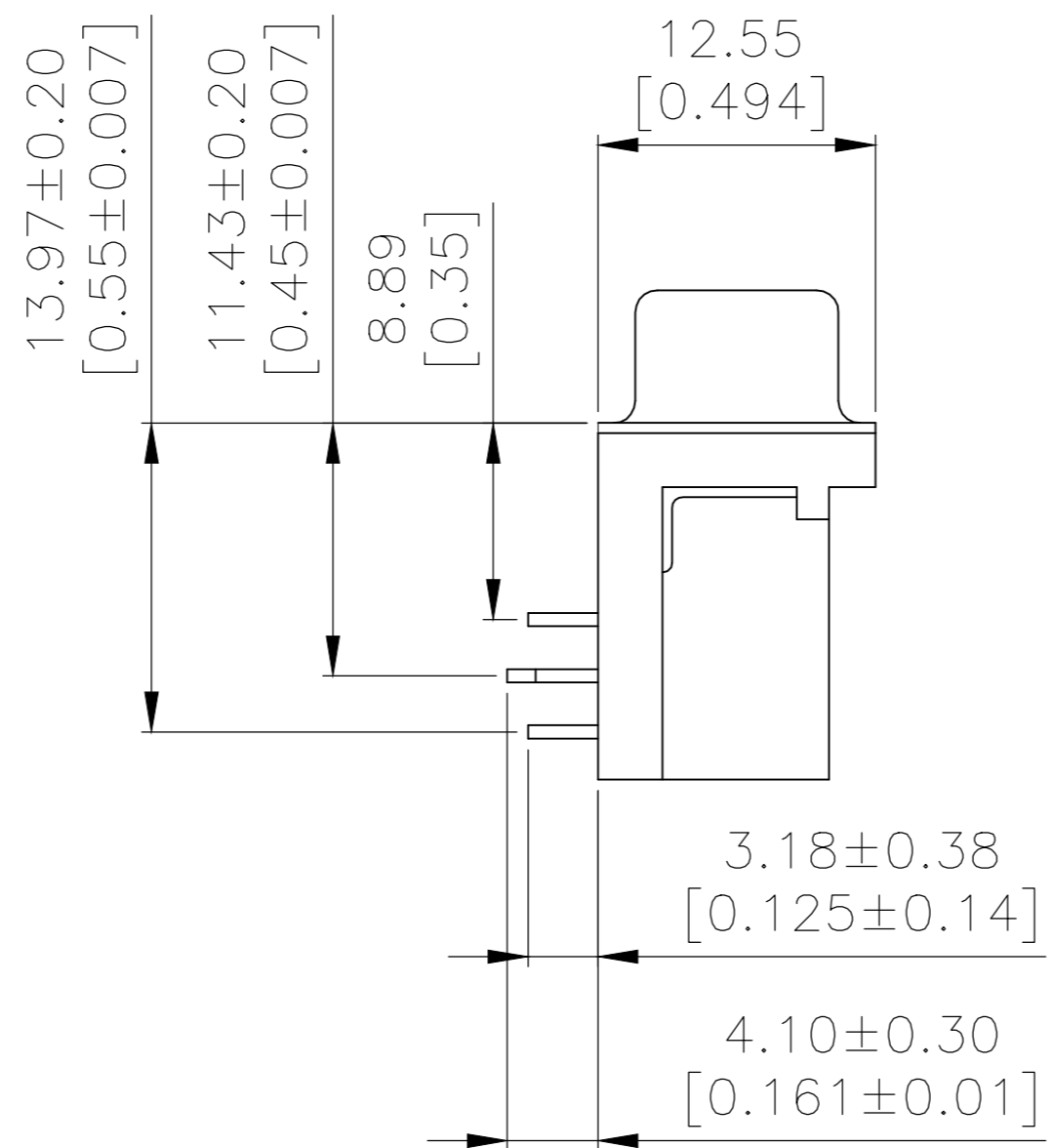
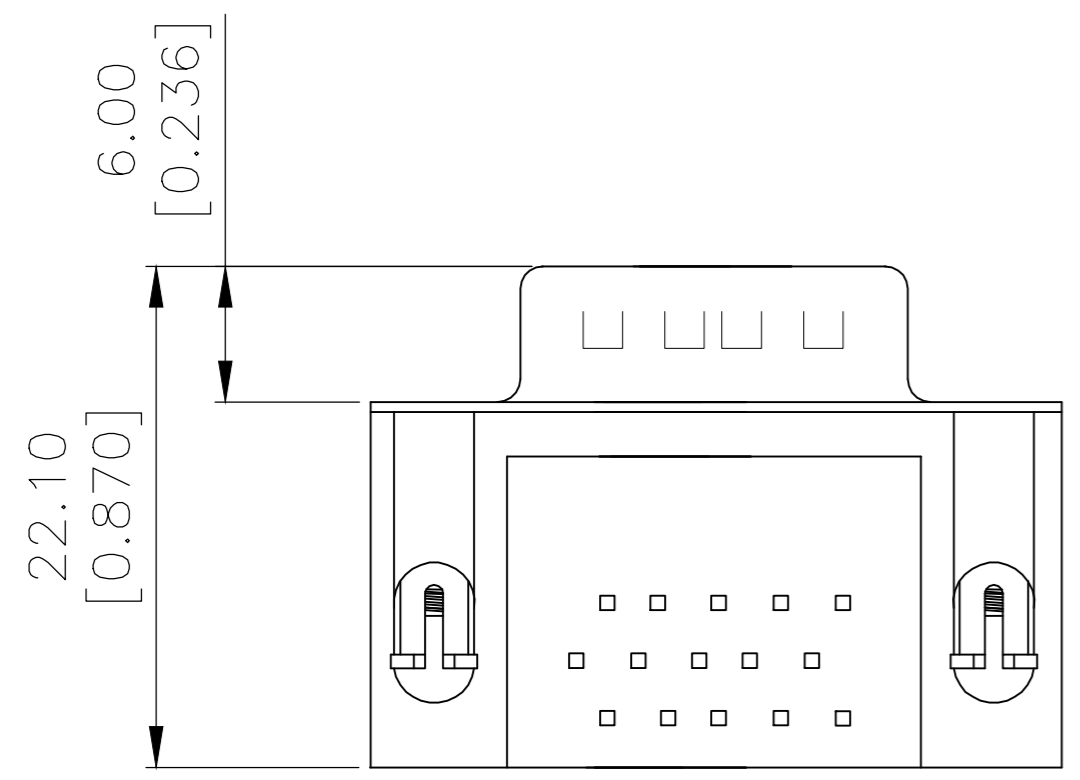
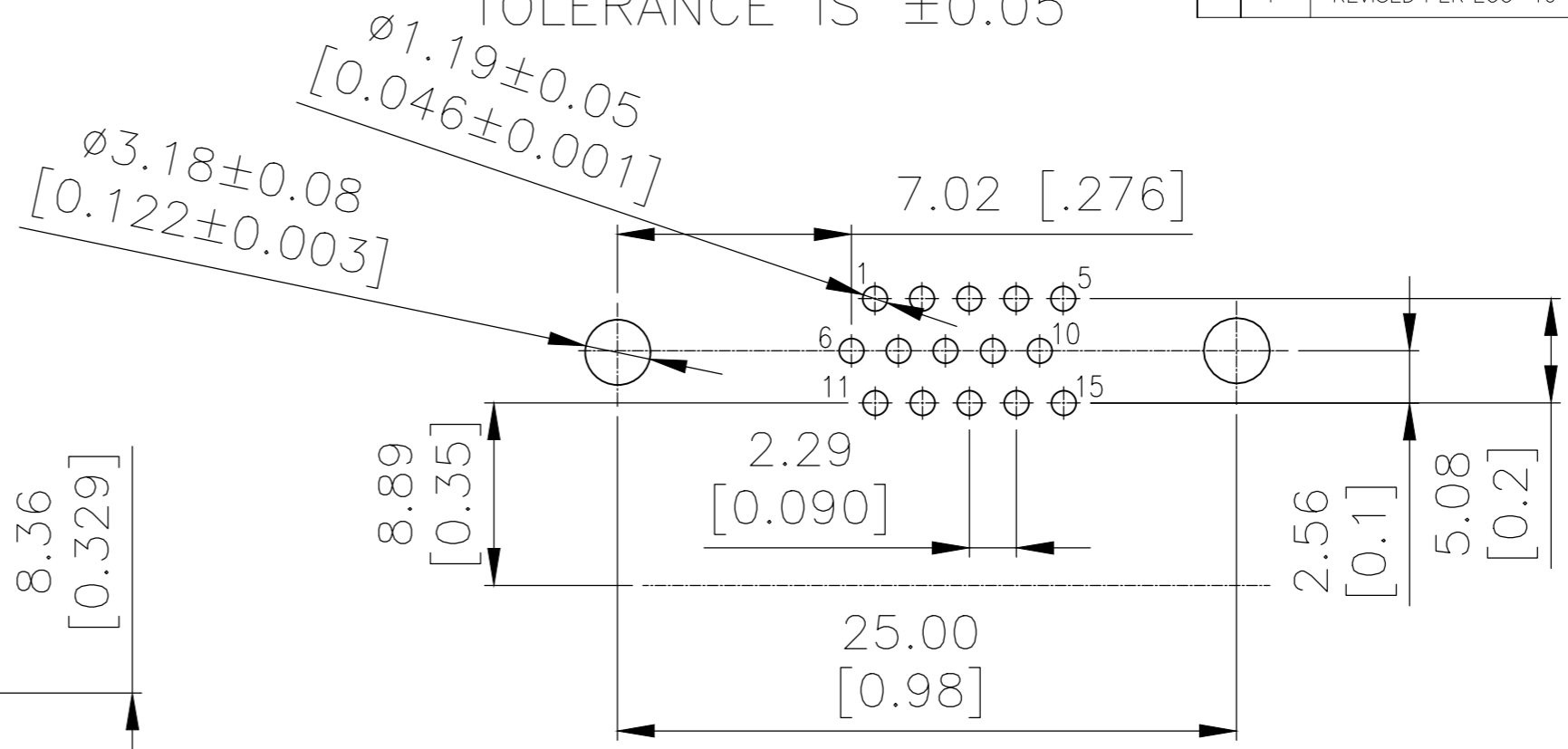
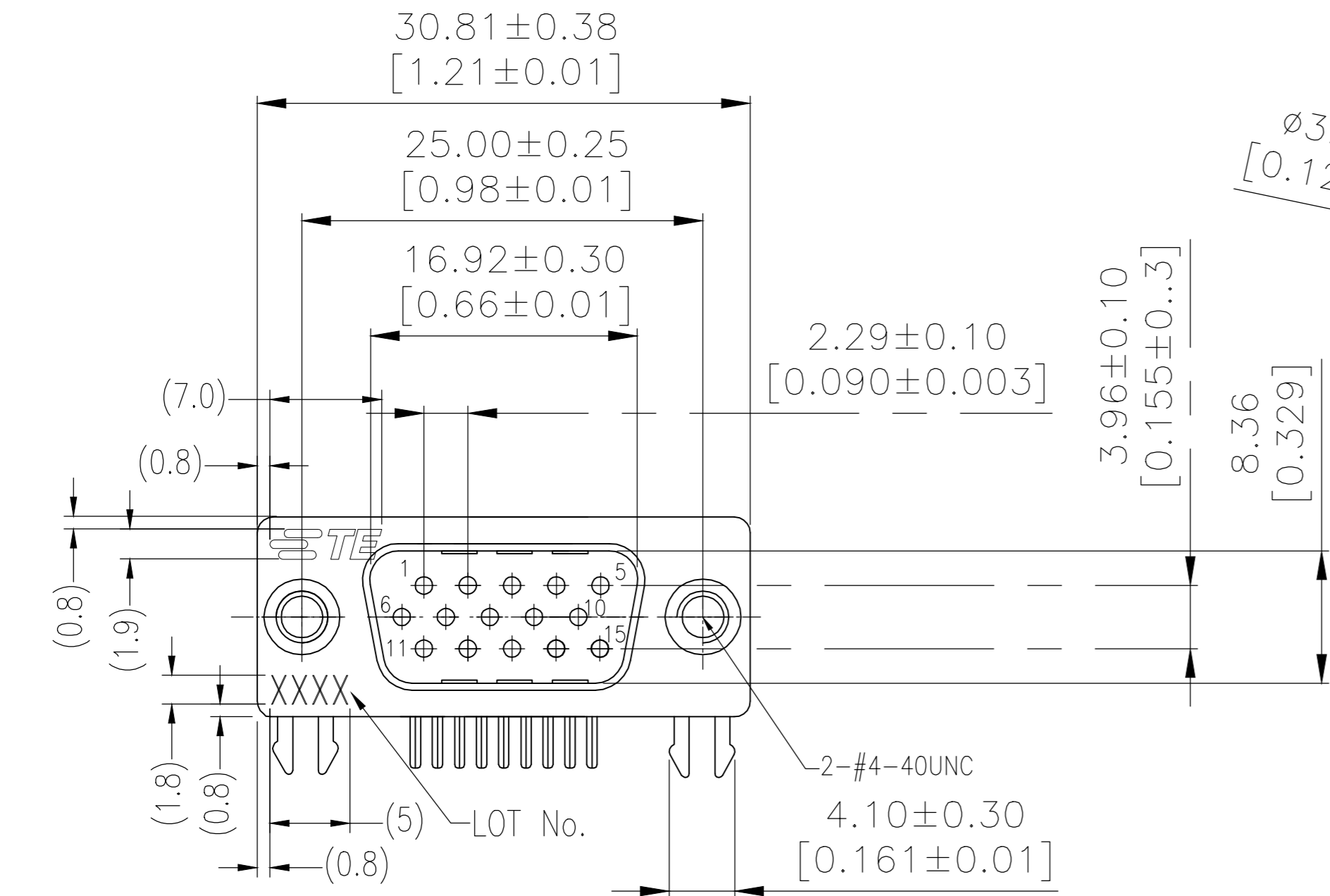


THIS DRAWING IS UNPUBLISHED. RELEASED FOR PUBLICATION
 © COPYRIGHT - By - ALL RIGHTS RESERVED.

RECOMMENDED PCB LAYOUT
 TOLERANCE IS ±0.05

REVISIONS				
P	LTR	DESCRIPTION	DATE	APVD
F		REVISED PER ECO-19-007626	12SEP2019	AP DG



NOTES:
 Housing:PBT+30%GF(UL94V-0) BLACK
 Contact:Brass
 " GOLD PLATING ON CONTACT AREA
 100u" MATTE TIN PLATING ON SOLDER TAIL
 50u" NICKEL UNDERPLATED OVERALL
 HOLDDOWN:Brass,100u" TIN OVER 50u" NICKEL
 Shell: Cold Roller Steel, Ni Plated
 Revit: Brass, Nickel Plating
 LOT NUMBER "XXXX"
 ↳ Stands For Calendar Year
 ↳ Stands For Week Number

THREADED	30μ" Au	2311774-1
-	Contact Area	P/N
	Plating	

THIS DRAWING IS A CONTROLLED DOCUMENT.		DWN AJITH PAI 09MAR2017	TE Connectivity																			
DIMENSIONS: mm		CHK DANIEL GORENC 09MAR2017																				
TOLERANCES UNLESS OTHERWISE SPECIFIED:		APVD DANIEL GORENC 09MAR2017	NAME AMPLIMITE PLUG, HD22, RIGHT ANGLE, 15P																			
<table border="1"> <tr><td>0 PLC</td><td>±</td><td>-</td></tr> <tr><td>1 PLC</td><td>±</td><td>-</td></tr> <tr><td>2 PLC</td><td>±</td><td>0.25</td></tr> <tr><td>3 PLC</td><td>±</td><td>-</td></tr> <tr><td>4 PLC</td><td>±</td><td>-</td></tr> <tr><td>ANGLES</td><td>±</td><td>-</td></tr> </table>		0 PLC	±	-	1 PLC	±	-	2 PLC	±	0.25	3 PLC	±	-	4 PLC	±	-	ANGLES	±	-	PRODUCT SPEC 108-130023	SIZE A2	
0 PLC	±	-																				
1 PLC	±	-																				
2 PLC	±	0.25																				
3 PLC	±	-																				
4 PLC	±	-																				
ANGLES	±	-																				
MATERIAL		FINISH	CAGE CODE 00779	DRAWING NO C=2311774																		
		WEIGHT	RESTRICTED TO																			
		CUSTOMER DRAWING	SCALE 1:1	SHEET 1 OF 1																		
			REV F																			