

BXH MATED VIEWS

DESIGNED & DIMENSIONED
IN INCHES[MILLIMETERS]

DO NOT
SCALE FROM
THIS PRINT

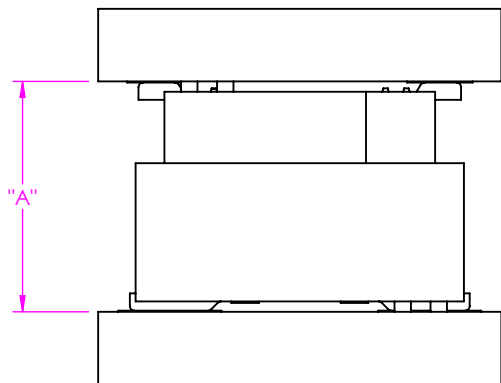


FIG 1
BSH-D MATED WITH BTH-D

TABLE 1			
		BSH LEAD STYLE	
		-01	-02
BTH LEAD STYLE	-01	.200 [5.08]	NO CONTACT
	-02	.317 [8.05]	.318 [8.08]
	-03	.435 [11.05]	.435 [11.05]
	-04	.631 [16.03]	.631 [16.03]
	-05	.749 [19.02]	.749 [19.02]
	-06	.867 [22.02]	.867 [22.02]
	-09	.553 [14.05]	.553 [14.05]

TABLE 2				
BTH LEAD STYLE	Max Board to Board Dimension ("A")		Min Contact Wipe	Max Contact Wipe
-01	.207	[5.26]	.015	.022
-02	.325	[8.26]	.015	.023
-03	.443	[11.26]	.015	.023
-04	.639	[16.23]	.015	.023
-05	.757	[19.23]	.015	.023
-06	.875	[22.23]	.015	.023
-09	.561	[14.26]	.015	.023

NOTES:

1. ALL DIMENSIONS BASED ON NOMINAL VALUES FOR SAMTEC RECOMMENDED PCB LAYOUTS.
2. ALTHOUGH MAX DIMENSIONS ARE LISTED SAMTEC RECOMMENDS FULLY MATING COMPONENTS.

PROPRIETARY NOTE
 THIS DOCUMENT CONTAINS CONFIDENTIAL AND PROPRIETARY INFORMATION AND ALL DESIGN, MANUFACTURING, REPRODUCTION, USE, PATENT RIGHTS AND SALES RIGHTS ARE EXPRESSLY RESERVED BY SAMTEC, INC. THIS DOCUMENT SHALL NOT BE DISCLOSED, IN WHOLE OR IN PART, TO ANY UNAUTHORIZED PERSON OR ENTITY NOR REPRODUCED, TRANSFERRED OR INCORPORATED IN ANY OTHER PROJECT IN ANY MANNER WITHOUT THE EXPRESS WRITTEN CONSENT OF SAMTEC, INC.



520 PARK EAST BLVD, NEW ALBANY, IN 47150
 PHONE: 812-944-6733 FAX: 812-948-5047
 e-Mail info@SAMTEC.com code 55322