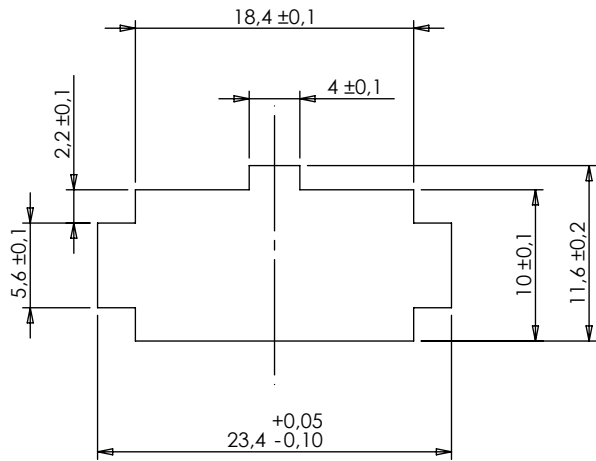
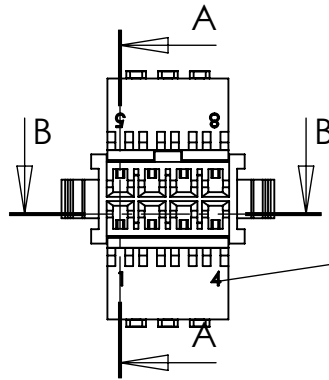


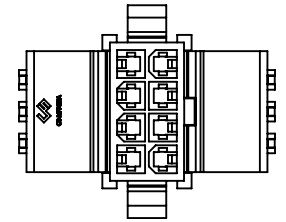
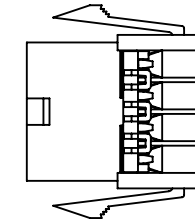
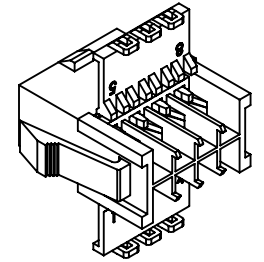
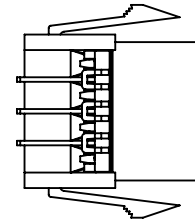
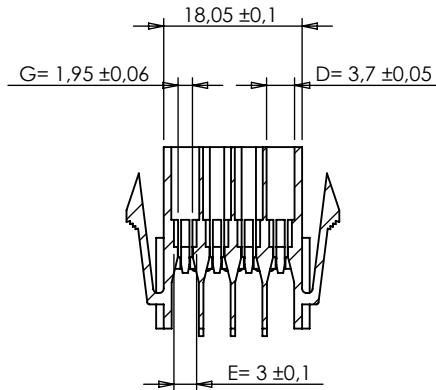
SEZIONE A-A



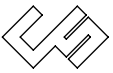
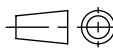
Spessore lamiera 0,8 - 2 mm



SEZIONE B-B



Way number in the housing, thickness 0,05 mm

INDEX	MODIFICATION	DATE
 <p>COLOMBO SERGIO e Figli S.r.l. 20063 CERNUSCO S/N - VIA COMO, 11 TEL +39.02.9210.7404 - FAX +39.02.9210.0217 http://www.cscolombo.com - e-mail: info@cscolombo.com</p>		
CHECKED BY		DATE
Stefano Galimberti		15-02-2012
DESIGN UNITS		METRIC
DRAWN BY		DATE
Stefano Querzoli		15-02-2012
WEIGHT		
SCALE	CAD REFER	SIZE
1:1	Y:\dis\cs\mft\mftxxf\mftxxfa sec lock\tavole\	A4
INDEX 0		15-02-2012
BASE CODE		DESCRIPTION
CS-MFT42FA		MFT FEMALE CONNECTOR FOR PANEL, 4X2 POLES

DIMENSIONS WITHOUT TOLERANCES		CS-MFT42FA	PA66 UL94 V-2	
		CS-MFT42FAV0	PA6/66 UL94 V-0	
$\angle \pm 2^\circ$	0 - 6	± 0.1	CS-MFT42FAV0750NF	PA66 UL94 V-0 GWIT 775
	6 - 30	± 0.2	CS-MFT42FA-G	PA6 UL94 V-2 GWIT 775
	> 30	± 0.3	PART NUMBER	MATERIAL