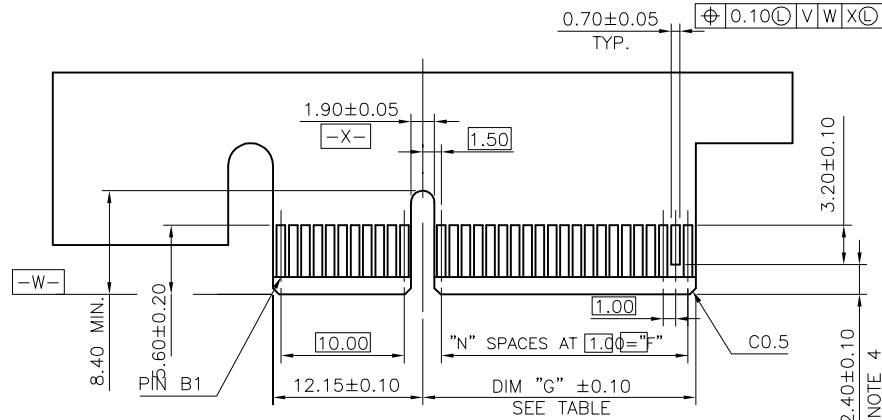
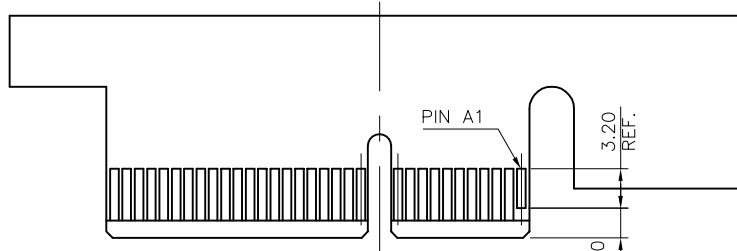


DIMENSIONS				
POSITION	B ±0.20	C ±0.20	D ±0.23	E
36	27.00	9.15	25.00	6
64	41.00	23.15	39.00	20
98	58.00	40.15	56.00	37
164	91.00	73.15	89.00	70

mat'l. code	-	surface	-	tolerance	ASME_Y14.5	projection	MM	product family	PCI_EXPRESS
lfr	ecn no	dr	date	tolerances unless otherwise specified		MM	scale N/A	title	PCI_EXPRESS_CARD_EDGE_GEN3
				angles	.02±0.30			ONE_OPEN_END_SMT_ASS'Y	5
				±2'	.00±0.20			dwg no	10151347
				dr	WINSTON_ZHU 2020-06-10			sheet 1 of 4	size A4
				enr	ZHENHUA_LIU 2020-06-10				
				chr					
				appd	HEAVEN_CEN 2020-06-10				
sheet index	revision	A						type	CUSTOMER Drawing
	sheet								

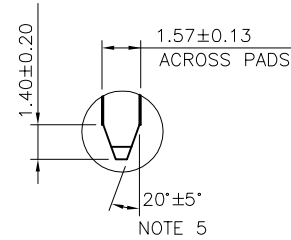
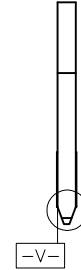


← I/O PANEL DIRECTION
PRIMARY (COMPONENT) SIDE



I/O PANEL DIRECTION →
SECONDARY (SOLDER) SIDE

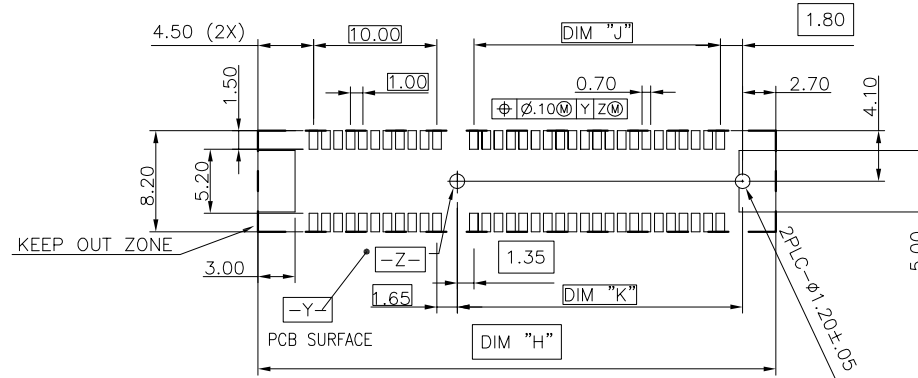
PIN "F" SEE TABLE 2.40±0.10 NOTE 4



SCALE 2:1

#	POS	REF.	N	DIM "G"	DIM "F"	"F"
36	6		8.15	6.00	B17	
64	20		22.15	20.00	B31	
98	37		39.15	37.00	B48	
164	70		72.15	70.00	B81	

mat'l. code		-		surface		- ✓		tolerance		ASME_Y14.5		projection		product family		PCI_EXPRESS	
ltr		ecn no		dr		date		tolerances unless otherwise specified				title		PCI_EXPRESS_CARD_EDGE_GEN3		5	
								angles LineG: .0±0.30 ±2' .00±0.20 .000±0.10		← MM → scale N/A		PCI_EXPRESS_CARD_EDGE_GEN3 ONE_OPEN_END_SMT_ASS'Y					
				dr		WINSTON_ZHU 2020-06-10						dwg no sheet 2 of 4 size		10151347 A4			
				enr		ZHENHUA_LIU 2020-06-10						type CUSTOMER Drawing					
				chr													
				app		HEAVEN_CEN 2020-06-10											
sheet index		revision sheet		A													



RECOMMENDED PCB LAYOUT, PAD TYPE

NOTE 3

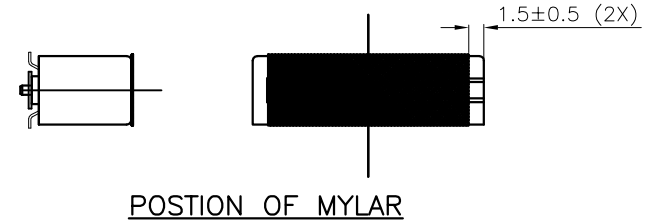
DIMENSIONS

POSITION	B ±0.20	C ±0.20	D ±0.23	E	H ±0.10	J	K ±0.10
36	27.00	9.15	25.00	6	28.00	6.00	9.15
64	41.00	23.15	39.00	20	42.00	20.00	23.15
98	58.00	40.15	56.00	37	59.00	37.00	40.15
164	91.00	73.15	89.00	70	92.00	70.00	73.15

mat'l. code		-		surface		- ✓		tolerance		ASME_Y14.5		projection		product family		PCI_EXPRESS	
ltr	ecn no	dr	date	tolerances unless otherwise specified								title		PCI_EXPRESS_CARD_EDGE_GEN3			
				angles	lineal	.02±0.30	MM		scale N/A		PCI_EXPRESS_CARD_EDGE_GEN3		ONE_OPEN_END_SMT_ASS'Y				
				±2'		.00±0.20					dwg no		sheet 3 of 4 size				
				dr	WINSTON_ZHU	2020-06-10					10151347		A4				
				enr	ZHENHUA_LIU	2020-06-10					type		CUSTOMER Drawing				
				chr													
				appd	HEAVEN_CEN	2020-06-10											
sheet	revision	A															
index	sheet																

NOTES:

- 1.MATERIAL:
 - HOUSING: NYLON, GLASS FILLED UL94V-0 RATE, HF.
 - TERMINAL: COPPER ALLOY
 - PLATING: SEE PRODUCT NUMBER CODE
- 2.PRODUCT SPECIFICATION: GS-12-390.
- ③ THE HORIZONTAL AXIS FOR THE PAD PATTERN IS ESTABLISHED BY A LINE THROUGH THE CENTER OF THE TWO $\phi 1.2$ HOLES. THE VERTICAL AXIS IS 90° TO THE HORIZONTAL AXIS, THROUGH THE CENTER OF DATUM -Z-
- ④ NO TIE BAR PERMITTED FROM CARD EDGE TO LEADING EDGE OF PAD FOR PIN "A1" AND PIN NUMBER "F"
- ⑤ CHAMFER EDGES MUST BE FREE OF CUTTING BURRS.
- 6.RoHS COMPATIBLE PRODUCT SPECIFICATIONS
 - a - PLATING:
 - "LF" MEANS THE PRODUCT IS LEAD-FREE
 - b - MANUFACTURING PROCESS COMPATIBILITY
 - THE HOUSING WILL WITHSTAND EXPOSURE TO 260°C PEAK TEMPERATURE FOR 10 SECONDS IN A CONVECTION, INFRA-RED OR VAPOR PHASE REFLOW OVEN.



PRODUCT NUMBER CODE

10151347 - X X X X LF

HOUSING COLOR OPTIONS
1-BLACK

TERMINAL PLATING OPTIONS
 0-50u" Ni UNDERPLATE
 30u" Au CONTACT AREA
 100u" TIN TAIL AREA
 1-50u" Ni UNDERPLATE
 15u" Au CONTACT AREA
 100u" TIN TAIL AREA
 2-50u" Ni UNDERPLATE
 GOLD FLASH CONTACT AREA
 100u" TIN TAIL AREA

LEAD FREE OPTION

PACKAGING OPTIONS
 T-TRAY PACKAGING WITHOUT MYLAR
 N-TRAY PACKAGING WITH MYLAR
 R-TAPE & REEL PACKAGING WITHOUT MYLAR (FOR 36P & 64P OPTIONS ONLY)
 M-TAPE & REEL PACKAGING WITH MYLAR (FOR 36P & 64P OPTIONS ONLY)
 Y-HARD TRAY(338x234) (FOR 36P, 98P & 164P OPTION ONLY)
 Z-HARD TRAY(338x234) WITH MYLAR (FOR 36P, 98P & 164P OPTION ONLY)

POS OPTIONS
 0-36
 1-64
 2-98
 3-164

mat'l. code		-		surface	-	tolerance	ASME_Y14.5	projection	product family	PCI_EXPRESS	
ltr	ecn no	dr	date	tolerances unless otherwise specified		angles		MM	title		
				.02±0.30		±2'			PCI_EXPRESS_CARD_EDGE_GEN3		
				.00±0.20		.000±0.10			ONE_OPEN_END_SMT_ASS'Y		
		dr	WINSTON_ZHU	2020-06-10				Amphenol FCI	dwg no		sheet 4 of 4
		enr	ZHENHUA_LIU	2020-06-10					10151347		A4
		chr									
		appd	HEAVEN_CEN	2020-06-10					CUSTOMER Drawing		
sheet index	revision sheet	A									