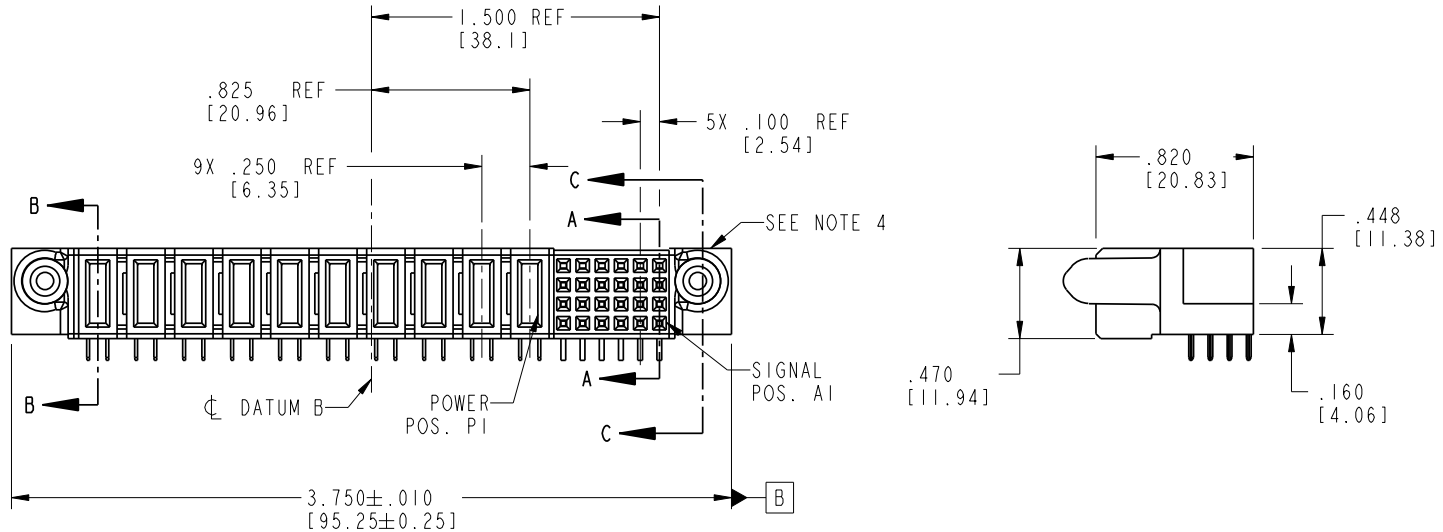
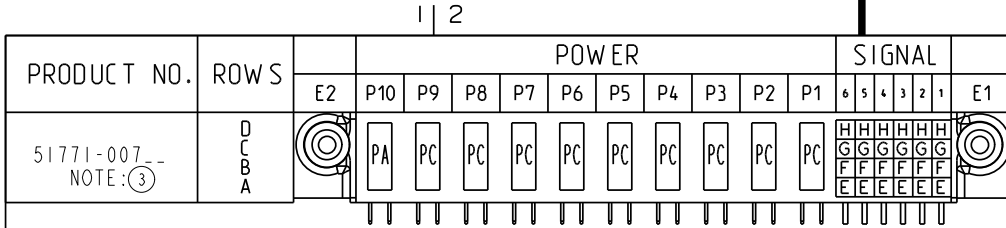


Tous droits strictement réservés. Reproduction ou communication o des liers interdite sous quelque forme que ce soit sans autorisation écrite du propriétaire. Propriete de c FCI. Droits de reproduction FCI.

All rights strictly reserved. Reproduction or issue to third parties in any form whatever is not permitted without written authority from the proprietor. Property of FCI. Copyright FCI.

FCI



| CODE | DIM "M" MATING LENGTH | CONTACT TYPE |
|------|-----------------------|--------------|
| PC | .092 [2.34] | POWER |
| H | N/A [N/A] | SIGNAL |
| G | N/A [N/A] | SIGNAL |
| F | N/A [N/A] | SIGNAL |
| E | N/A [N/A] | SIGNAL |
| PA | .042 [1.07] | POWER |

| | | | | | | | | | |
|-----------------------|----------------|-----|----------|---------------------------------------|------------------------|------------|--|----------------------------------|--|
| mat'l code SEE NOTE 2 | | | | tolerances unless otherwise specified | | CUSTOMER | | FCI www.fciconnect.com | |
| lir | ecn no. | dr | date | linear | .XX±.01/0.X±0.3 | COPY | | title 24S + 10P | |
| A | DG05-0408 | JMG | 10/21/05 | | .XX±.005/0.XX±0.13 | projection | | R/A STB RECEPTACLE | |
| B | DG06-0094 | JMG | 03/06/06 | angles | .XXX±.0020/0.XXX±0.051 | | | product family PwrBlade code 213 | |
| | | | | dr | JM GUO 10/21/05 | INCH/MM | | size dwg no | |
| | | | | enr | Sally.Luo 10/31/05 | scale | | A 51771-007 | |
| | | | | chr | VICTOR LIN 10/21/05 | 1:1 | | sheet 1 of 4 | |
| | | | | appd | JOSEPH HSIA 10/21/05 | | | | |
| sheet index | revision sheet | B 1 | B 2 | B 3 | B 4 | | | | |

1 | 2

Pro/E

PDM: Rev: B

STAT **US: Released**

Printed: Dec 20, 2010

Tous droits strictement réservés. Reproduction ou communication o des liers interdite sous quelque forme que ce soit sans autorisation écrite du propriétaire. Propriete de c FCI. Droits de reproduction FCI.

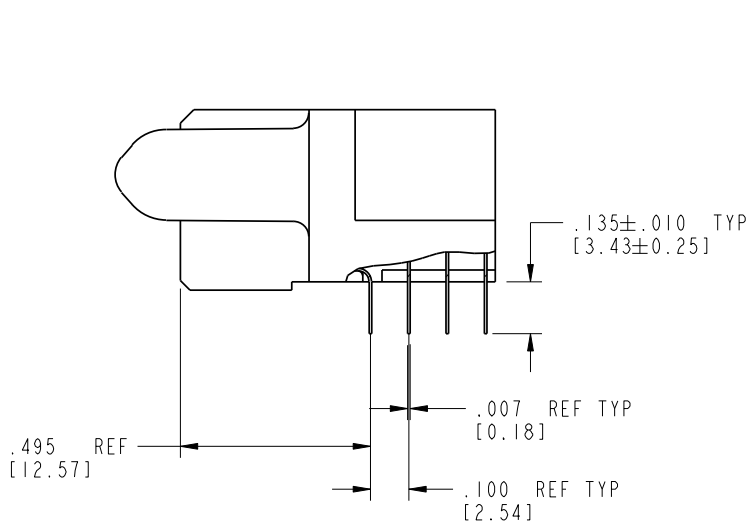
All rights strictly reserved. Reproduction or issue to third parties in any form whatever is not permitted without written authority from the proprietor. Property of FCI. Copyright FCI.

FCI

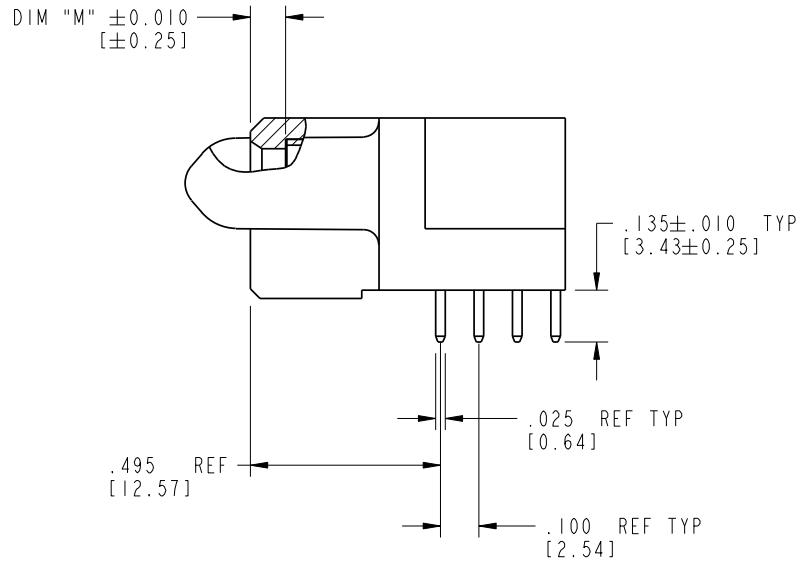
PRODUCT NUMBER

51771-007--

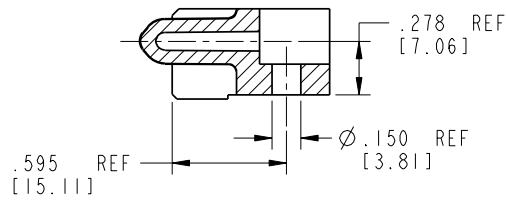
NOTE: ③



BROKEN-OUT SECTION A-A
SCALE 2:1



BROKEN-OUT SECTION B-B
SCALE 2:1



SECTION C-C

| | | | | | | | | | |
|-------------|---------|----------------|------|---------------------------------------|------------------------|------------|--|------------------------|--|
| mat'l code | | SEE NOTE 2 | | tolerances unless otherwise specified | | CUSTOMER | | www.fciconnect.com | |
| lir | ecn no. | dr | date | linear | .XX±.01/0.X±0.3 | COPY | | title | |
| B | | | | | .XX±.005/0.XX±0.13 | projection | | 24S + 10P | |
| | | | | angles | .XXX±.0020/0.XXX±0.051 | | | R/A STB RECEPTACLE | |
| | | | | | 0°±2° | INCH/MM | | product family | |
| | | | | dr | JM GUO 10/21/05 | scale | | PwrBlade | |
| | | | | enr | Sally.Luo 10/31/05 | 1:1 | | code | |
| | | | | chr | VICTOR LIN 10/21/05 | | | size | |
| | | | | appd | JOSEPH HSIA 10/21/05 | | | dwg no | |
| sheet index | | revision sheet | | | | | | A 51771-007 | |
| | | | | | | | | 213 | |
| | | | | | | | | sheet | |
| | | | | | | | | 2 of 4 | |

Pro/E

PDM: Rev: B

STAT **Released**

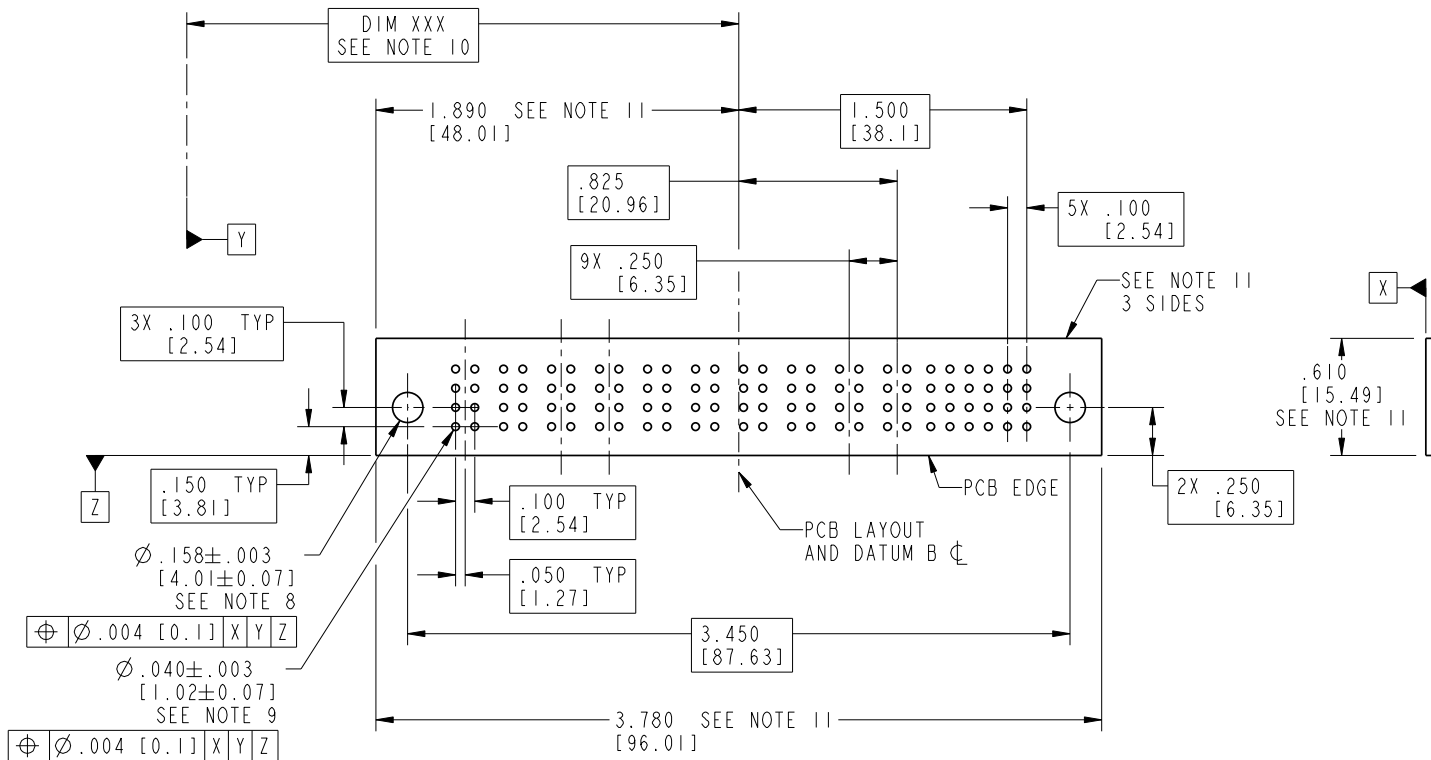
Printed: Dec 20, 2010

Tous droits strictement réservés. Reproduction ou communication o des liers interdite sous quelque forme que ce soit sans autorisation écrite du propriétaire. Propriete de c FCI. Droits de reproduction FCI.

All rights strictly reserved. Reproduction or issue to third parties in any form whatever is not permitted without written authority from the proprietor. Property of FCI. Copyright FCI.

A
FCI

PRODUCT NUMBER
51771-007--
NOTE: ③



| | | | | | | | | | | | |
|-------------|----------------|------------|------|---------------------------------------|-----------------------|------------|--|------------------------|--|--------------------|--|
| mat'l code | | SEE NOTE 2 | | tolerances unless otherwise specified | | CUSTOMER | | A FCI | | www.fciconnect.com | |
| lir | ecn no. | dr | date | linear | .XX±.01/0.X±0.3 | COPY | | title | | 24S + 10P | |
| B | | | | linear | .XX±.005/0.XX±0.13 | projection | | R/A | | STB RECEPTACLE | |
| | | | | angles | .XXX±.002/0.XXX±0.051 | INCH/MM | | product family | | PwrBlade | |
| | | | | dr | JM GUO 10/21/05 | scale | | size | | 213 | |
| | | | | enr | Sally.Luo 10/31/05 | 1:1 | | dwg no | | sheet | |
| | | | | chr | VICTOR LIN 10/21/05 | | | A | | 3 of 4 | |
| | | | | appd | JOSEPH HSIA 10/21/05 | | | 51771-007 | | | |
| sheet index | revision sheet | | | | | | | | | | |

A

A

B

B

1 | 2

3 |

4

1 | 2

Pro/E

PDM: Rev: B

STAT **Released**

Printed: Dec 20, 2010

PRODUCT NUMBER


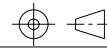
51771-007--
NOTE: (3)

NOTES:

- 1. DIMENSIONS AND TOLERANCES ARE IN ACCORDANCE WITH ASME Y14.5M, 1994 UNLESS OTHERWISE SPECIFIED.
- 2. CONNECTOR NOTES:
HOUSING MATERIAL: UL 94 V-0 GLASS FILLED HIGH-TEMP THERMOPLASTIC
POWER CONTACT MATERIAL: COPPER ALLOY
SIGNAL PIN MATERIAL: COPPER ALLOY
- 3. 51771-007;51771-007LF;51771-007GLF PLATING SPEC. SEE PRINT:10064183
- 4. MANUFACTURER'S NAME, P/N, AND DATE CODE TO APPEAR ON THIS SURFACE.
- 5. PRODUCT SPECIFICATION GS-12-149.
APPLICATION SPECIFICATION BUS-20-067.
- 6. PACKAGED IN TRAYS.

PCB NOTES:

- 7. ALL HOLE DIAMETERS ARE FINISHED HOLE SIZE.
- 8. MOUNTING HOLES, WHERE APPLICABLE, ARE UNPLATED.
- 9. $\varnothing .0453 \pm .0010$ [1.151 \pm 0.025] DRILLED HOLES PLATED WITH .0003 [0.008] MIN SnPb OVER .001 [0.03] TO .003 [0.08] Cu PLATING TO ACHIEVE $\varnothing .040 \pm .003$ [1.02 \pm .07] HOLE.
- 10. "DIM XXX" TO BE DETERMINED BY THE CUSTOMER.
- 11. CONNECTOR KEEP-OUT ZONE.

| | | | | | | | | | | |
|-------------|----------------|------------|------|---------------------------------------|------------------------|----------|--|---|--------|--------|
| mat'l code | | SEE NOTE 2 | | tolerances unless otherwise specified | | CUSTOMER | |  www.fciconnect.com | | |
| lir | ecn no. | dr | date | linear | .XX±.01/0.X±0.3 | | projection | COPY | | |
| B | | | | | .XXX±.005/0.XX±0.13 | | | title | | |
| | | | | angles | .XXX±.0020/0.XXX±0.051 | |  INCH/MM | R/A 24S + 10P | | |
| | | | | | 0°±2° | | | product family | | code |
| | | | | dr | JM GUO | 10/21/05 | scale | PwrBlade | | |
| | | | | enr | Sally.Luo | 10/31/05 | | 1:1 | size | 213 |
| | | | | chr | VICTOR LIN | 10/21/05 | | | dwg no | sheet |
| | | | | appd | JOSEPH HSIA | 10/21/05 | | | A | 4 of 4 |
| sheet index | revision sheet | | | | | | | | | |

Tous droits strictement réservés. Reproduction ou communication a des tiers interdite sous quelque forme que ce soit sans autorisation écrite du propriétaire. Propriété de c FCI. Droits de reproduction FCI.

A

A

FCI

All rights strictly reserved. Reproduction or issue to third parties in any form whatever is not permitted without written authority from the proprietor. Property of FCI. Copyright FCI.

B

B