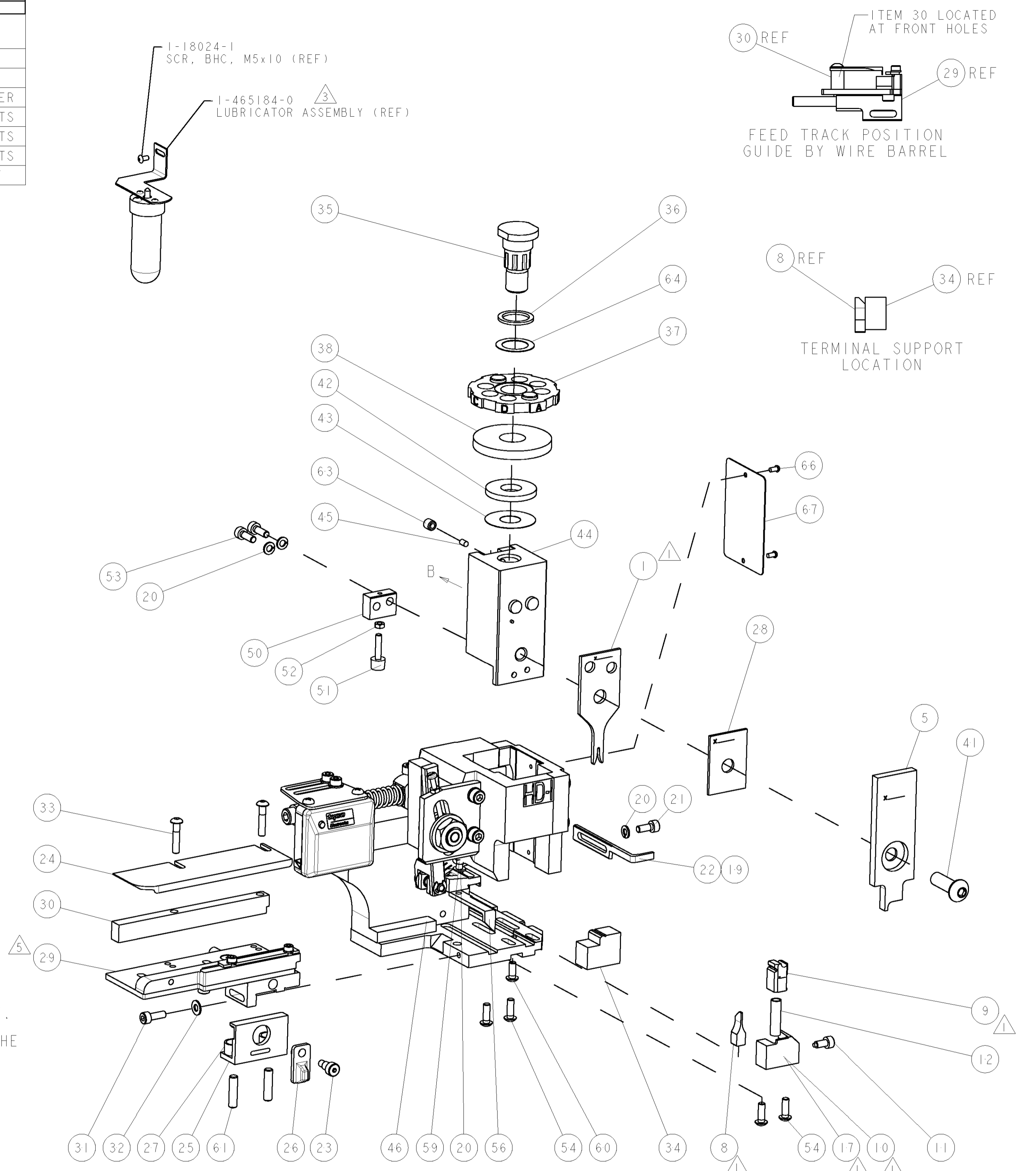
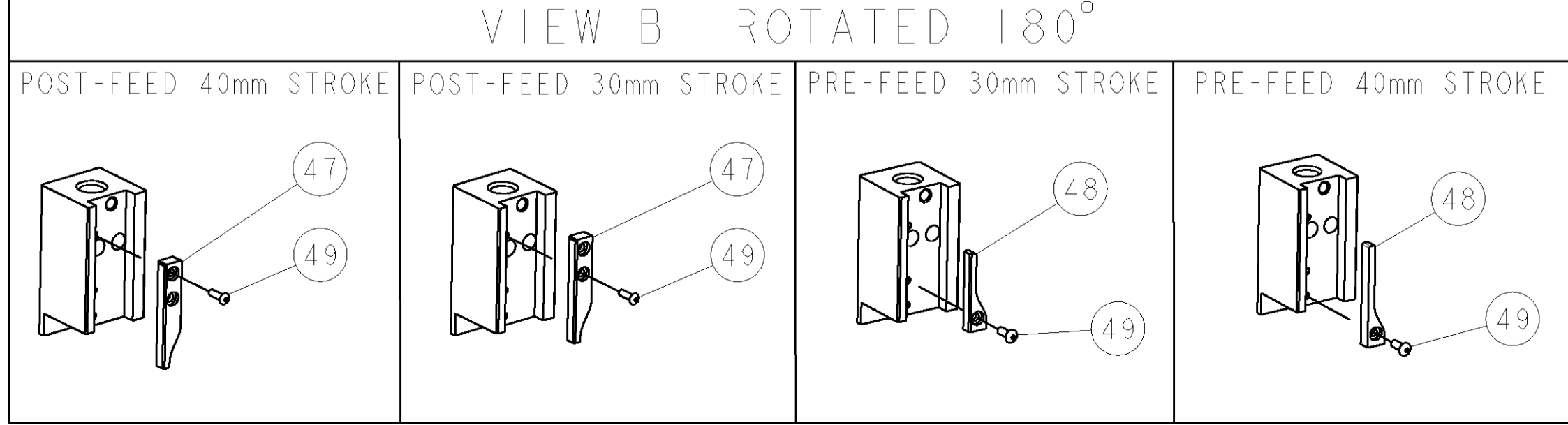


PART NUMBER	REV	TERMINATOR	FEED TYPE	DESCRIPTION
1426649-1	A	LEADMAKER	MECH POST FEED	CUTS CARRIER
1426649-2	A	BENCH	MECH PRE FEED	CUTS CARRIER
1426649-6	A	LEADMAKER	MECH POST FEED	CONTINUOUS CARRIER
7-1426649-1	A	LEADMAKER	MECH POST FEED	-1 AND SPARE PARTS
7-1426649-2	A	BENCH	MECH PRE FEED	-2 AND SPARE PARTS
7-1426649-6	A	LEADMAKER	MECH POST FEED	-6 AND SPARE PARTS
7-1426649-7	A	-	-	SPARE PARTS KIT

CRIMP DATA		TE TERMINAL	TE CRIMP SPECS
TERMINAL NAME: CENTER CONTACT, JACK HF FAKRA 2, RG174			
CRIMP	SIZE	TYPE	RANGE
WIRE	0.94 [.037 IN]	F	0.14mm ²
INSUL	.00 [.000 IN]	-	-
WIRE STRIP LENGTH SEE APPL SPECS		APPL INSTRUCTIONS 408-8322	
TERMINAL	114-18622 (A)	FEED	5.00 [.197 IN]
APPL SPEC	114-18623 (B)		
TERMINALS APPLIED			
1418970 (A)	-	-	-
1418971 (A)	-	-	-
1719685 (B)	-	-	-
WIRE SIZE	CRIMP HEIGHT	PINPN & LENGTH [IN]	
0.14mm ²	0.72 ± 0.03 [.028 ± .001 IN]	2-354779-0 [.3090]	

- △ RECOMMENDED SPARE PARTS.
- 2. GREASE RAM, CAM, CAM FOLLOWER AND FEED ROD LIGHTLY.
- △ CERTAIN TERMINALS REQUIRE LUBRICATION. REFER TO THE APPLICATOR INSTRUCTION SHEET FOR MORE INFORMATION.
- 4. LUBRICATE DAILY PER THE APPLICATOR INSTRUCTION SHEET SUPPLIED WITH THE APPLICATOR.
- △ STRIP GUIDE MAY REQUIRE ADJUSTMENT WHEN CHANGING FROM ONE TERMINAL TO ANOTHER.



-	-	-	-	-	-	-	-	-	-	-	83
-	-	-	-	-	-	-	-	-	-	-	82
-	-	-	-	-	-	-	-	-	-	-	81
-	-	-	-	-	-	-	-	-	-	-	80
-	-	-	-	-	-	-	-	-	-	-	79
-	-	-	-	-	-	-	-	-	-	-	78
-	-	-	-	-	-	-	-	-	-	-	77
-	-	-	-	-	-	-	-	-	-	-	76
-	-	-	-	-	-	-	-	-	-	-	75
-	-	-	-	-	-	-	-	-	-	-	74
-77	-76	-72	-71	-6	-2	-1	PART NO	DESCRIPTION	ITEM NO		

REVISONS		DATE	BY	APPD
1		07SEP2007	DP	MC

LOC	DIST	REV	DATE	DESCRIPTION	DATE	BY	APPD
A	66			SEE ECO-07-021104			

-	-	-	-	-	-	-	-	-	73
-	-	-	-	-	-	-	-	-	72
-	1	1	1	1	1	1	1338705-1	DOCUMENTATION PACKAGE	71
-	-	-	-	-	-	-	-	-	70
-	-	-	-	-	-	-	-	-	69
-	-	-	-	-	-	-	-	-	68
-	1	1	1	1	1	1	461264-1	PLATE, IDENTIFICATION	67
-	2	2	2	2	2	2	21017-2	SCREW, DRIVE	66
-	-	-	-	-	-	-	-	-	65
-	1	1	1	1	1	1	986950-1	WASHER, FLAT PRECISION	64
-	1	1	1	1	1	1	3-18031-0	SCR, SET, CUP POINT M6 X 6.0	63
-	-	-	-	-	-	-	-	-	62
-	2	2	2	2	2	2	2-18032-5	SCR, SET, FLT POINT M5 X 20.0	61
-	1	1	1	1	1	1	18024-7	SCR, BTN SKT HD CAP (M4 X 10.0)	60
-	1	1	1	1	1	1	5-18022-2	SCR, HEX HD CAP M4 X 8.0	59
-	-	-	-	-	-	-	-	-	58
-	-	-	-	-	-	-	-	-	57
-	1	1	1	1	1	1	1338685-1	PAWL, FEED	56
-	-	-	-	-	-	-	-	-	55
-	4	4	4	4	4	4	18024-8	SCR, BTN SKT HD CAP (M4 X 12.0)	54
-	2	2	2	2	2	2	1-18023-2	SCR, SKT HD CAP M4 X 12.0	53
-	1	1	1	1	1	1	18030-1	NUT, HEX, REG M3	52
-	1	1	1	1	1	1	811242-5	BUMPER, HOLD DOWN	51
-	1	1	1	1	1	1	690753-2	SPACER, TONKER	50
-	1	1	1	1	1	1	18024-3	SCR, BTN SKT HD CAP (M3 X 10.0)	49
-	1	1	1	1	1	1	1338675-1	CAM, UNIVERSAL PRE FEED	48
-	1	1	1	1	1	1	1338676-1	CAM, UNIVERSAL POST-FEED	47
-	1	1	1	1	1	1	1320999-3	APPLICATOR SUBASSEMBLY, HDI	46
-	1	1	1	1	1	1	690191-1	PLUG, NYLON	45
-	1	1	1	1	1	1	1338660-1	RAM	44
-	1	1	1	1	1	1	690125-1	SHIM SUB-ASSY	43
-	1	1	1	1	1	1	690124-4	WASHER, RAM (.135)	42
-	1	1	1	1	1	1	2-18024-6	SCR, BTN SKT HD CAP (M8 X 25.0)	41
-	-	-	-	-	-	-	-	-	40
-	-	-	-	-	-	-	-	-	39
-	1	1	1	1	1	1	690223-2	SPACER, INS.	38
-	1	1	1	1	1	1	354777-1	WIRE DISC, ASSEMBLY	37
-	1	1	1	1	1	1	22480-5	SPRING, COMPRESSION	36
-	1	1	1	1	1	1	690212-1	POST, RAM	35
-	1	1	1	1	1	1	1-1424186-7	SUPPORT, TERMINAL	34
-	2	2	2	2	2	2	1-18024-0	SCR, BTN SKT HD CAP (M4 X 20.0)	33
-	1	1	1	1	1	1	18027-2	WASHER, FLAT, REG M4	32
-	1	1	1	1	1	1	1-18023-2	SCR, SKT HD CAP M4 X 12.0	31
-	1	1	1	1	1	1	1320908-9	SPACER, STRIP GUIDE	30
-	1	1	1	1	1	1	1633073-1	STRIP GUIDE ASSEMBLY	29
-	1	1	1	1	1	1	1-455888-4	SPACER, CRIMPER	28
-	2	2	2	2	2	2	1-22284-0	SPRING, COMPRESSION	27
-	1	1	1	1	1	1	356835-1	LEVER, DRAG RELEASE	26
-	1	1	1	1	1	1	240792-1	DRAG, TERMINAL	25
-	1	1	1	1	1	1	1320928-1	PLATE, STRIP GUIDE	24
-	1	1	1	1	1	1	980371-4	SCR, SKT HD SHLDR 5.0 DIA X 6.0	23
-	1	1	1	1	1	1	690472-2	STRIPPER	22
-	1	1	1	1	1	1	1-18023-1	SCR, SKT HD CAP M4 X 10.0	21
-	4	4	4	4	4	4	18025-2	WASHER, SPRG LOCK, REG M4	20
-	-	-	-	-	-	-	690472-1	STRIPPER	19
-	-	-	-	-	-	-	-	-	18
-	1	1	1	1	1	1	1338684-1	SHEAR HOLDER, FRONT	17
-	-	-	-	-	-	-	-	-	16
-	-	-	-	-	-	-	-	-	15
-	-	-	-	-	-	-	-	-	14
-	-	-	-	-	-	-	-	-	13
-	1	1	1	1	1	1	3-22280-3	SPRING, COMPRESSION	12
-	1	1	1	1	1	1	356885-4	STOP, SHEAR	11
-	-	-	-	-	-	-	1320921-1	SHEAR HOLDER, FRONT, CUT	10
-	1	1	1	1	1	1	462006-1	FLOATING SHEAR, FRONT	9
-	1	2	2	2	1	1	4-1633139-7	ANVIL, COMBINATION	8
-	-	-	-	-	-	-	-	-	7
-	-	-	-	-	-	-	-	-	6
-	1	1	1	1	1	1	2-455889-0	DEPRESSOR, SHEAR	5
-	-	-	-	-	-	-	-	-	4
-	-	-	-	-	-	-	-	-	3
-	-	-	-	-	-	-	-	-	2
-	1	2	2	2	1	1	562350-3	CRIMPER, WIRE	1

77	76	72	71	6	2	1	PART NO	DESCRIPTION	ITEM NO																																			
-	-	-	-	-	-	-	-	-	-																																			
<table border="1"> <tr> <th>MM [IN]</th> <th>TOLERANCES UNLESS OTHERWISE SPECIFIED:</th> <th>FINISH</th> <th>WEIGHT</th> <th>MATERIAL</th> </tr> <tr> <td>0</td> <td>PLC ±</td> <td>±</td> <td>±</td> <td>±</td> </tr> <tr> <td>1</td> <td>PLC ±</td> <td>±</td> <td>±</td> <td>±</td> </tr> <tr> <td>2</td> <td>PLC ±</td> <td>±</td> <td>±</td> <td>±</td> </tr> <tr> <td>3</td> <td>PLC ±</td> <td>±</td> <td>±</td> <td>±</td> </tr> <tr> <td>4</td> <td>PLC ±</td> <td>±</td> <td>±</td> <td>±</td> </tr> <tr> <td>ANGLES</td> <td>±</td> <td>±</td> <td>±</td> <td>±</td> </tr> </table>										MM [IN]	TOLERANCES UNLESS OTHERWISE SPECIFIED:	FINISH	WEIGHT	MATERIAL	0	PLC ±	±	±	±	1	PLC ±	±	±	±	2	PLC ±	±	±	±	3	PLC ±	±	±	±	4	PLC ±	±	±	±	ANGLES	±	±	±	±
MM [IN]	TOLERANCES UNLESS OTHERWISE SPECIFIED:	FINISH	WEIGHT	MATERIAL																																								
0	PLC ±	±	±	±																																								
1	PLC ±	±	±	±																																								
2	PLC ±	±	±	±																																								
3	PLC ±	±	±	±																																								
4	PLC ±	±	±	±																																								
ANGLES	±	±	±	±																																								
<table border="1"> <tr> <th>DATE</th> <th>BY</th> <th>APPD</th> <th>NAME</th> <th>PRODUCT SPEC</th> <th>APPLICATION SPEC</th> <th>SIZE</th> <th>CAGE CODE</th> <th>DRAWING NO</th> <th>RESTRICTED TO</th> </tr> <tr> <td>2AUG2007</td> <td>L LOFTHOUSE</td> <td></td> <td></td> <td>M CLIFFORD</td> <td>See Table</td> <td>A1</td> <td>00779</td> <td>1426649</td> <td></td> </tr> </table>										DATE	BY	APPD	NAME	PRODUCT SPEC	APPLICATION SPEC	SIZE	CAGE CODE	DRAWING NO	RESTRICTED TO	2AUG2007	L LOFTHOUSE			M CLIFFORD	See Table	A1	00779	1426649																
DATE	BY	APPD	NAME	PRODUCT SPEC	APPLICATION SPEC	SIZE	CAGE CODE	DRAWING NO	RESTRICTED TO																																			
2AUG2007	L LOFTHOUSE			M CLIFFORD	See Table	A1	00779	1426649																																				
TITLOUTHOUSE		Tyco Electronics		Tyco Electronics		Harrisburg, PA 17105-3608																																						
DIMENSIONS: mm [IN]					TOLERANCES UNLESS OTHERWISE SPECIFIED:																																							
MATERIAL					FINISH																																							
CUSTOMER DRAWING					SCALE		SHEET 1 OF 1																																					