

DO NOT SCALE FROM THIS PRINT

TABLE 1			
ITEM	COMPONENT	-HF	-HN
1	SUB ASSEMBLY	SUB-MCX-P-C-F-ST-CA1	SUB-MCX-P-C-FN-ST-CA1
2	PIN	MCX-PIN-001-H	
3	FERRULE	MCX-FER-014-F	MCX-FER-014-N

MCX-P-C-XX-ST-CA1S

GENDER
-P: PLUG

TYPE
-C: CABLE

TERMINATION
-CA1S: CABLE (RG-316 CABLE, DOUBLE SHIELD)

ORIENTATION
-ST: STRAIGHT

PLATING SPECIFICATION

-HF: 30µ" GOLD CENTER CONTACT, 3µ" GOLD OUTER CONTACT
-HN: 30µ" GOLD CENTER CONTACT, 100µ" NICKEL OUTER CONTACT (SEE TABLE 1)

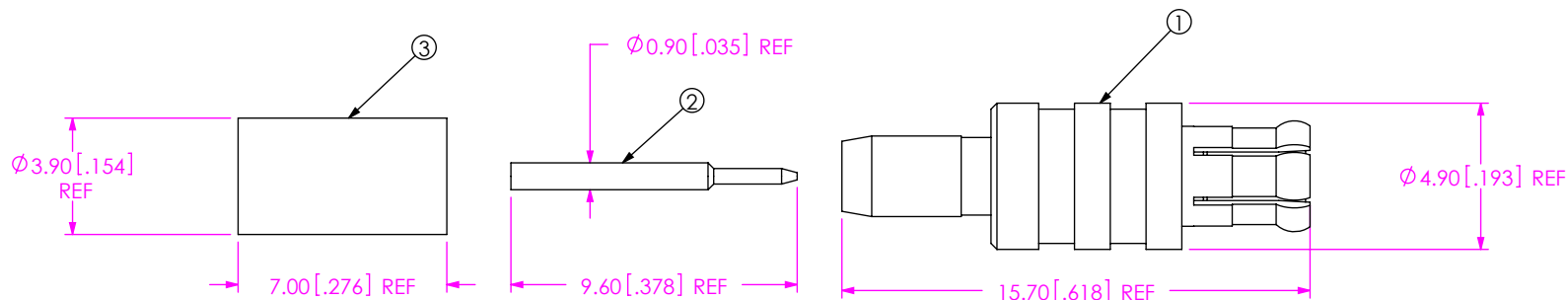



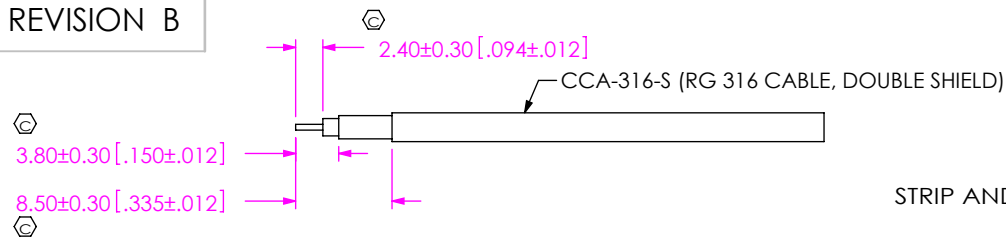
FIG1
MCX-P-C-XX-ST-CA1S SHOWN

NOTES:

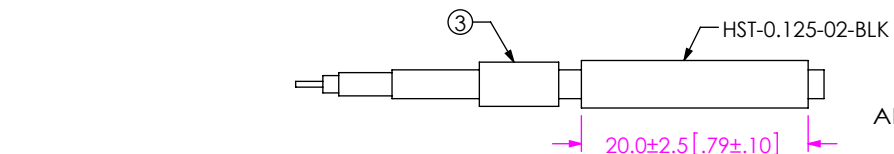
1. REPRESENTS A CRITICAL DIMENSION.
2. CENTER CONTACT PUSHOUT FORCE: 10 N [2.25 LB] MIN.
3. PRODUCT TO BE PACKAGED PER PACKAGING STANDARD CO-RF-WI-3040-M.
4. PIN AND FERRULE TO BE PACKAGED SEPARATELY.

F:\DWG\MISC\MKTG\MCX-P-C-XX-ST-CA1S-MKT.SLDDRW

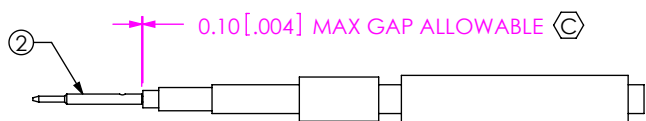
<p>UNLESS OTHERWISE SPECIFIED, DIMENSIONS ARE IN MILLIMETERS [INCHES]. TOLERANCES ARE: DECIMALS ANGLES .X: ±0.3 [.01] 5° .XX: ±0.13 [.005] .XXX: ±0.051 [.0020]</p>	<p>PROPRIETARY NOTE THIS DOCUMENT CONTAINS CONFIDENTIAL AND PROPRIETARY INFORMATION AND ALL DESIGN, MANUFACTURING, REPRODUCTION, USE, PATENT RIGHTS AND SALES RIGHTS ARE EXPRESSLY RESERVED BY SAMTEC, INC. THIS DOCUMENT SHALL NOT BE DISCLOSED, IN WHOLE OR PART, TO ANY UNAUTHORIZED PERSON OR ENTITY NOR REPRODUCED, TRANSFERRED OR INCORPORATED IN ANY OTHER PROJECT IN ANY MANNER WITHOUT THE EXPRESS WRITTEN CONSENT OF SAMTEC, INC.</p>	 520 PARK EAST BLVD, NEW ALBANY, IN 47150 PHONE: 812-944-6733 FAX: 812-948-5047 e-Mail: info@SAMTEC.com code: 55322
<p>MATERIAL: DO NOT SCALE DRAWING SHEET SCALE: 4:1</p> <p>SHELL, FERRULE: BRASS CONTACT: BRASS DIELECTRIC: PTFE</p>	<p>DESCRIPTION: MCX STRAIGHT CABLE PLUG, RG 316, DOUBLE SHIELD,- 50 OHM DWG. NO. MCX-P-C-XX-ST-CA1S BY: SHERRY W 09/22/2013 SHEET 1 OF 2</p>	



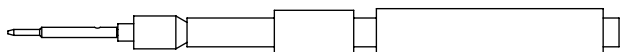
IN-PROCESS 1
STRIP AND TIN INNER CONDUCTOR



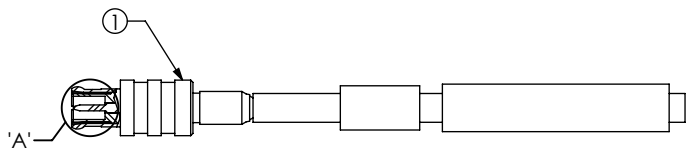
IN-PROCESS 2
ADD HEAT SHRINK TUBE AND FERRULE



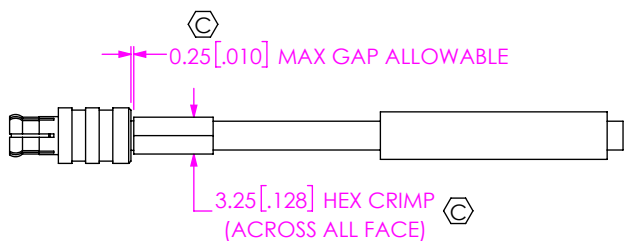
IN-PROCESS 3
SOLDER SIGNAL PIN



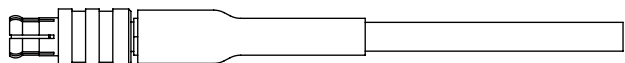
IN-PROCESS 4
FLARE SHIELD



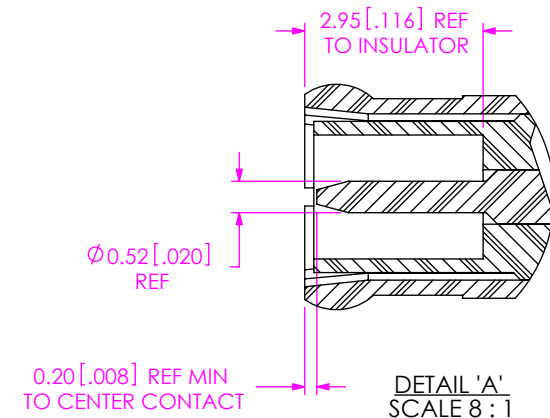
IN-PROCESS 5
ADD SUB-ASSEMBLY
(USE FIXTURE AS REQUIRED TO ASSURE
CENTER CONTACT PIN LOCATION)



IN-PROCESS 6
CRIMP FERRULE
(USE RF CRIMP HAND TOOL
CAT-RF-FER-01 OR EQUIVALENT)



IN-PROCESS 7
APPLY HEAT SHRINK TUBING



PROPRIETARY NOTE
THIS DOCUMENT CONTAINS CONFIDENTIAL AND PROPRIETARY INFORMATION AND ALL DESIGN, MANUFACTURING, REPRODUCTION, USE, PATENT RIGHTS AND SALES RIGHTS ARE EXPRESSLY RESERVED BY SAMTEC, INC. THIS DOCUMENT SHALL NOT BE DISCLOSED, IN WHOLE OR PART, TO ANY UNAUTHORIZED PERSON OR ENTITY NOR REPRODUCED, TRANSFERRED OR INCORPORATED IN ANY OTHER PROJECT IN ANY MANNER WITHOUT THE EXPRESS WRITTEN CONSENT OF SAMTEC, INC.

DO NOT SCALE DRAWING

SHEET SCALE: 1:0.666667



520 PARK EAST BLVD, NEW ALBANY, IN 47150
PHONE: 812-944-6733 FAX: 812-948-5047
e-Mail: info@SAMTEC.com code: 55322

DESCRIPTION:
MCX STRAIGHT CABLE PLUG, RG 316, DOUBLE SHIELD, - 50 OHM

DWG. NO.

MCX-P-C-XX-ST-CA1S

BY: SHERRY W 09/22/2013 SHEET 2 OF 2