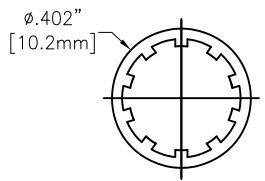
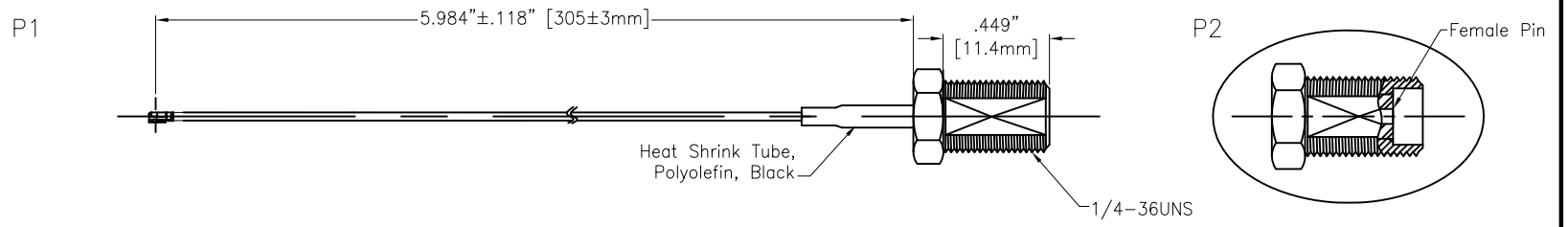


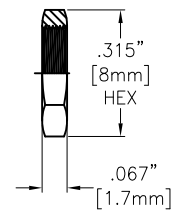
Rev	AWO #	Description	Date	Appr
-		RELEASED	11/16/18	

APPROVED: \_\_\_\_\_  
 DATE: \_\_\_\_\_ TITLE: \_\_\_\_\_

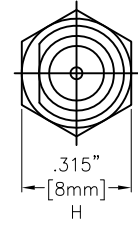
CUSTOM CABLE ASSEMBLIES ARE NON-CANCELLABLE / NON-RETURNABLE



Washer:  
Brass, Gold



Nut:  
Brass, Gold



**SPECIFICATIONS:**

**Connector:**

P1= I-PEX (IV) Connector, Gold plated  
 P2= SMA Jack, Straight, Female pin, Gold plated

**Cable:**

Ø1.13mm Coaxial Cable, Color: Black

**Electrical:**

Impedance: 50 ohms  
 Frequency range: DC-6 GHz

**Electrical Test:**

All Assemblies must be 100% Tested for  
 Shorts, Open, Continuity, and Physical Appearance.

**Environmental:**

Lead free, RoHS compliant



UNLESS OTHERWISE SPECIFIED ALL DIMENSIONS ARE INCHES [MM] TOLERANCES: EXCEPT AS NOTED		
INCHES		HOLES
.X ± .10	Ø.X ± .10	
.XX ± .020	Ø.XX ± .015	
.XXX ± .015	Ø.XXX ± .010	
APPROVALS		DATE
DRAWN	AY	11/16/18
CHECKED	AC	11/16/18
APPROVED		

**ADAM TECH**  
**INTERCONNECTS**  
 909 Rahway Avenue,  
 Union, NJ 07083  
 Phone: 908-687-5000  
 Fax: 908-687-5710

TITLE CUSTOM CABLE ASSEMBLY, IPEX IV PLUG TO SMA S/T JACK WITH OD 1.13MM CABLE		
SIZE	PART NO.	REV.
X	CA#DKCA1-305L0-AJ15	-
REF: S00291T	SCALE: NTS	SHEET 1 OF 1