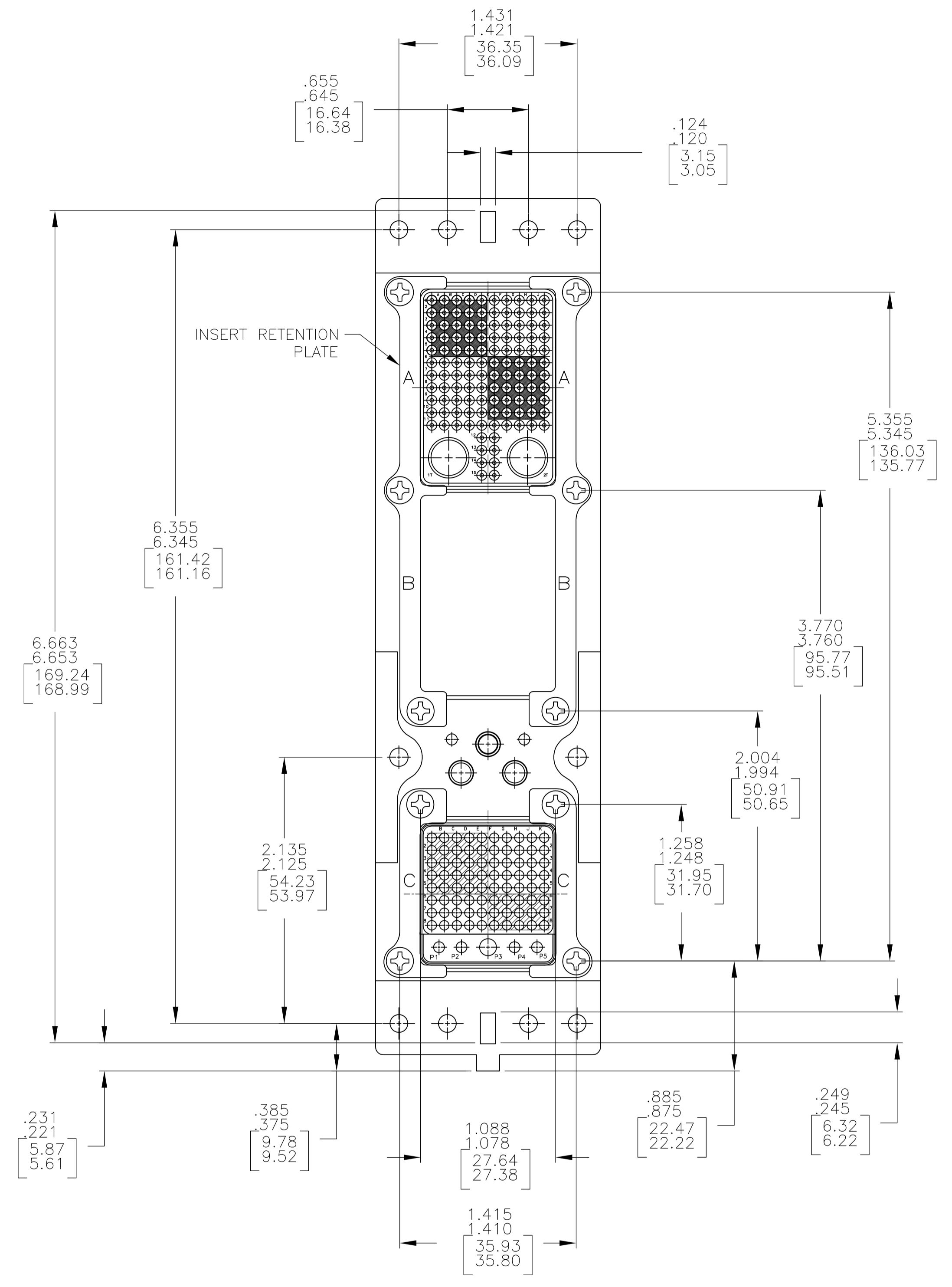
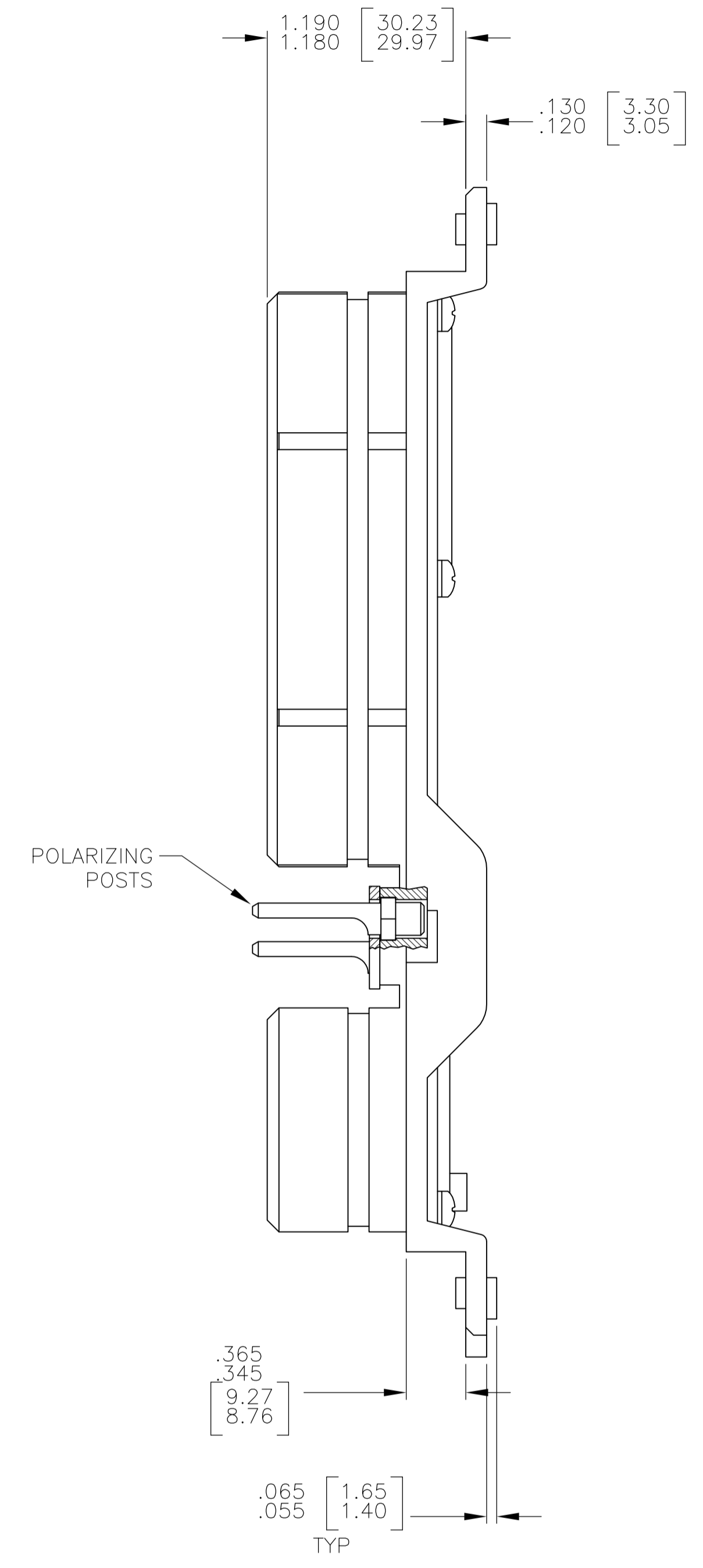
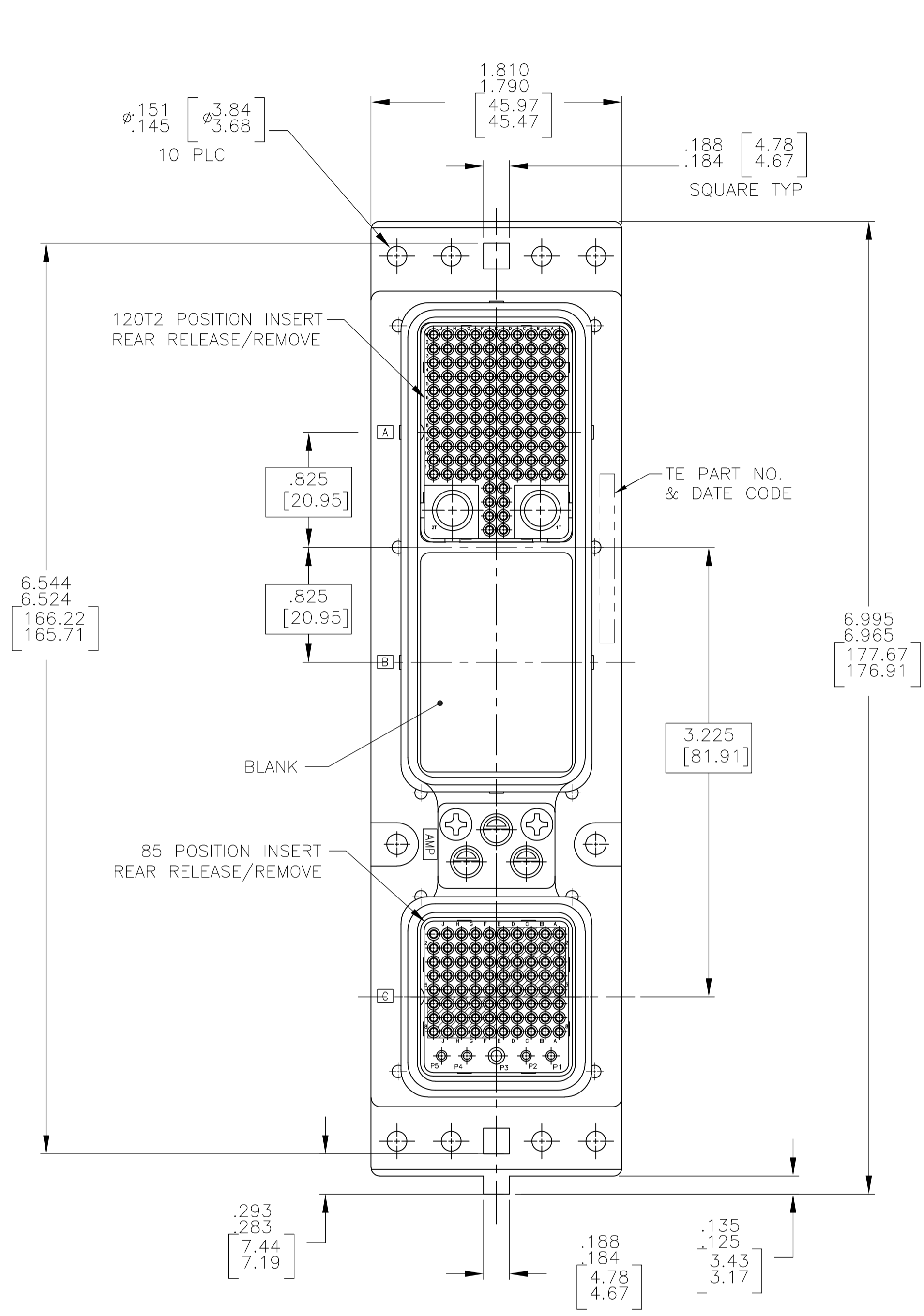


REVISONS		DATE	DNW	APVD
A	RELEASED	11-5-09	CT	KT



- CONNECTOR DIMENSIONS ARE PER ARINC 600 SPECIFICATION.
- CONNECTOR IS SUPPLIED WITH CONTACTS AS LISTED IN TABLE (NOT INSTALLED).
- KEYING SHOWN IN POSITION "01" FOR ILLUSTRATION ONLY. CONNECTORS SHIPPED WITH KEYING INSTALLED IN POSITION PER TABLE. FOR POSITION "00" KEYING HARDWARE SHIPPED UNASSEMBLED.
- DUST COVER INSTALLED FOR SHIPPING (NOT SHOWN).

COMPONENT	MATERIAL	FINISH
SHELL	DIE CAST ALUMINUM PER ASTM-B-85	ELECTROLESS NICKEL PER MIL-C-26074
INSERT RETENTION PLATES	ALUMINUM ALLOY PER ASTM-B-209	ELECTROLESS NICKEL PER MIL-C-26074
SCREWS AND LOCKWASHERS	STAINLESS STEEL	PASSIVATED
POLARIZING KEYS	ZINC ALLOY PER ASTM-B-86	-
120T2 & 85 INSERTS	THERMOSET OR THERMOPLASTIC PPS PER MIL-M-24519	-
POLARIZING KEY RETAINING PLATE	ALUMINUM ALLOY PER ASTM-B-209	BLUE ANODIZED PER MIL-A-8625

130	MODULE A: SIZE 22: 208262-3 (QTY=118) SIZE 8: 1218820-1 (QTY=2) MODULE B: NONE MODULE C: SIZE 22: 208262-3 (QTY=80) SIZE 20: 208267-2 (QTY=4) SIZE 16: 208270-2 (QTY=1)	2101651-1
KEYING POSITION	CONTACTS INCLUDED AND NOT INSTALLED	PART NUMBER

THIS DRAWING IS A CONTROLLED DOCUMENT.

DIN	C.C.THOMAS	11-5-09	Tyco Electronics Corporation Harrisburg, Pa 17105-3608
CHK	K.THACKSTON	11-5-09	
DIMENSIONS:	TOLERANCES UNLESS OTHERWISE SPECIFIED:	APVD	NAME
INCHES (mm)	0 PLC ± .005	K.THACKSTON	PLUG ASSY, SIZE 2, ARINC 600.
	1 PLC ± .005		(120T2/BLANK/85)
	2 PLC ± .005		APPLICATION SPEC
	3 PLC ± .005		SIZE
	4 PLC ± .005		CAGE CODE
	ANGLES ± .005		DRAWING NO
MATERIAL	FINISH	WEIGHT	RESTRICTED TO
SEE TABLE	SEE TABLE	—	A1 00779 ©=2101651
CUSTOMER DRAWING		SCALE	SHEET
		3:2	1 OF 1