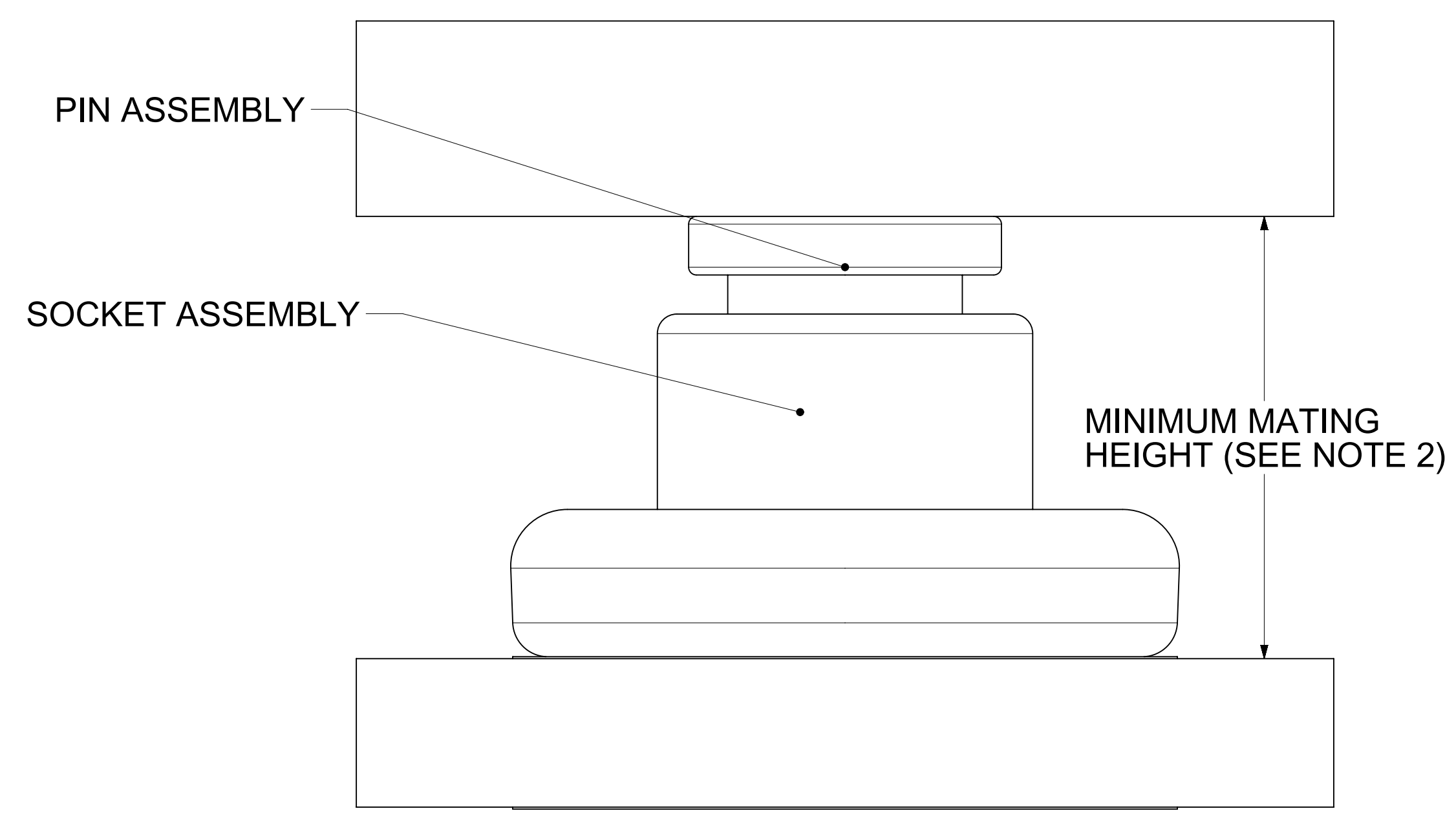


SECTION A-A



MATING PROFILE

NOTES:

1. MATERIALS:
 RETENTION CAP: STAINLESS STEEL
 PICK AND PLACE CAP: LCP UL94, V-0 COLOR BLACK
 BASE METAL: HIGH CONDUCTIVE COPPER ALLOY
 PLATING ON CONTACTS: 0.75 MICRON MIN GOLD OVER 1.27 MICRON MIN NICKEL
 PLATING ON BODY: 3.18 MICRON MIN SILVER OVER 1.27 MICRON MIN NICKEL
2. MATES WITH THE STANDARD PIN DRAWINGS:
 - i. 6.0MM SMT DRAWING 2032630136-SD, MIN. MATING DISTANCE 11.57MM
 - ii. 6.0MM PRESS FIT DRAWING 2032630006-SD, MIN. MATING DISTANCE 11.32MM
 - iii. 6.0MM SCREW MOUNT DRAWING 2032636185-SD, MIN. MATING DISTANCE 14.32MM
3. PRODUCT SPECIFICATION: 2043130006-PS
4. APPLICATION SPECIFICATION: 2043130006-AS
5. PACKAGING SPECIFICATION: 2121950016-PK
6. SILVER COMPONENTS WILL BE SUPPLIED TARNISH FREE BUT MAY TARNISH OVER TIME.
7. PICK AND PLACE CAP TO BE REMOVED AFTER SOLDERING. CAP TO BE PUSHED OUT OF BOTTOM FROM THE TOP.
8. DATE CODE TO BE LASER MARKED APPROXIMATELY WHERE SHOWN USING DDYY FORMAT

THIS DRAWING CONTAINS INFORMATION THAT IS PROPRIETARY TO MOLEX ELECTRONIC TECHNOLOGIES, LLC AND SHOULD NOT BE USED WITHOUT WRITTEN PERMISSION											
DIMENSION UNITS	SCALE	CURRENT REV DESC: UPDATED THE TITLE BLOCK									
mm	NTS	molex									
GENERAL TOLERANCES (UNLESS SPECIFIED)		6.0MM SENTRALITY TOP ENTRY SMT SOCKET WITH FLOAT IN T&R									
ANGULAR TOL ± 0.5°		PRODUCT CUSTOMER DRAWING									
4 PLACES ±		EC NO: 747243		DRWN: SACHIK7		2023/02/28		DOCUMENT NUMBER		DOC TYPE DOC PART REVISION	
3 PLACES ±		CHK'D: SCS02		APPR: HTHYAGARAJ		2023/04/25		2121950016-SD		PSD 000 B3	
2 PLACES ± 0.15		INITIAL REVISION:		DRWN: TOMLU		2019/03/12		MATERIAL NUMBER		CUSTOMER	
1 PLACE ± 0.25		APPR: BPISZCZOR		DRWN: TOMLU		2019/05/07		2121950016		GENERAL MARKET	
0 PLACES ±		DRAFT WHERE APPLICABLE MUST REMAIN WITHIN DIMENSIONS		THIRD ANGLE PROJECTION		DRAWING SERIES		D-SIZE 212195		SHEET NUMBER	
										1 OF 1	