

AF

50

P

LTR

DESCRIPTION

DATE

DWN

APVD

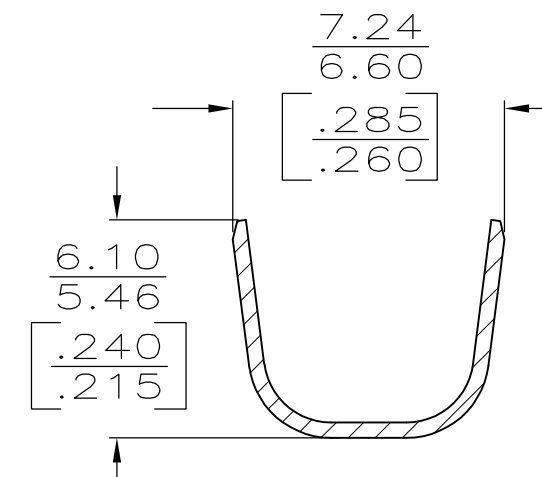
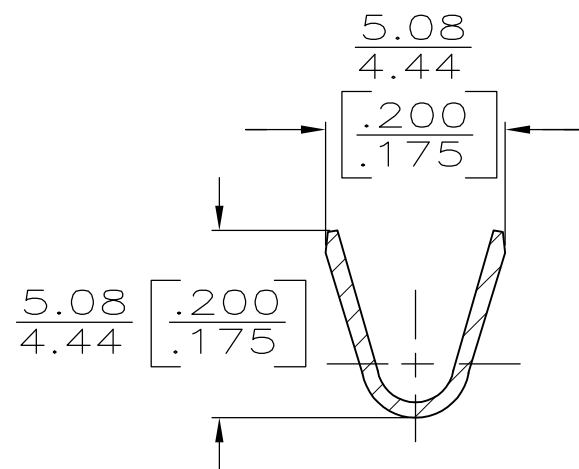
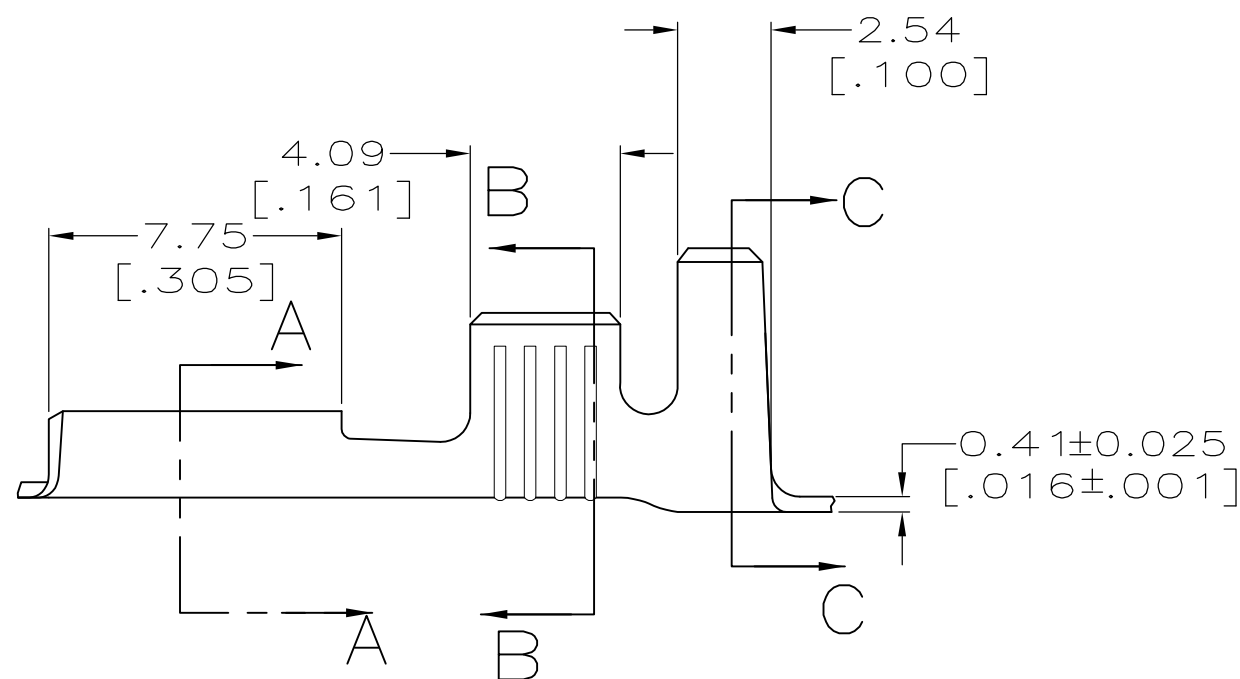
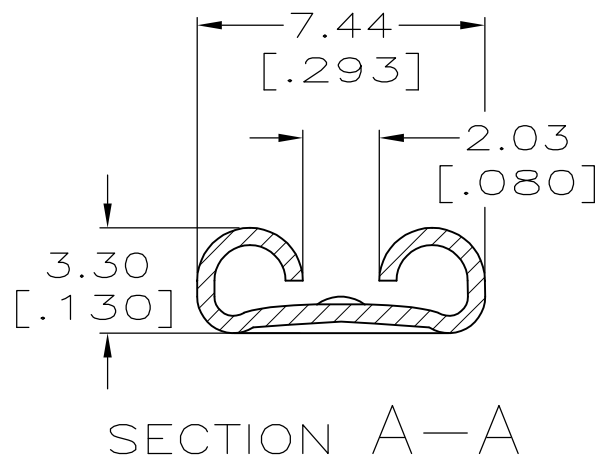
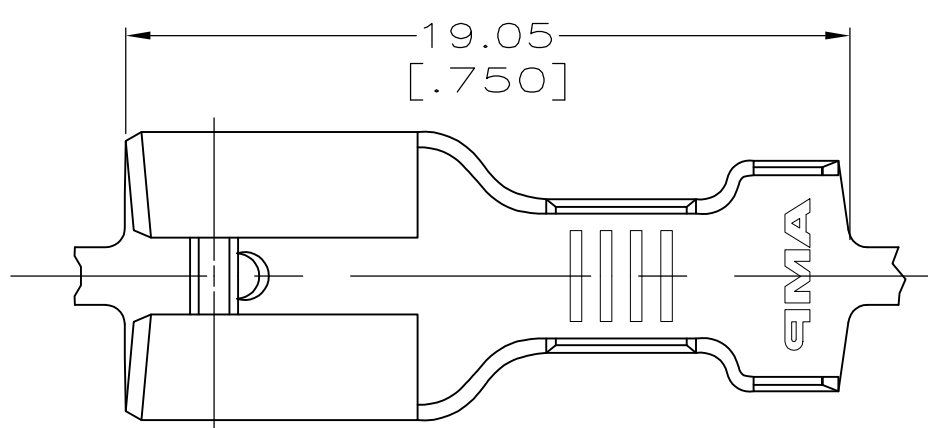
C REVISED PER ECR-12-013518

24NOV12

KH

PD

- 1 CONTINUOUS STRIP ON REELS.
- 2 ACCEPTS WIRE SIZE [#16-#12 OR TWO #16'S].
- 3 INSULATION RANGE TO BE 4.06-5.33 [.160-.210] OR TWO 3.30 [.130] MAX DIA.
- 4 MATING TAB THK. TO BE 0.81±0.025 [.032±.001]
- 5 0.002032 [.000080] MIN TIN PLATE
- 6 PRELIMINARY - NOT FOR PRODUCTION.



SECTION B-B

SECTION C-C

|        |             |
|--------|-------------|
| 5      | 6 63896-2   |
| -      | 63896-1     |
| Finish | Part Number |

|  |  |   |             |                     |                            |
|--|--|---|-------------|---------------------|----------------------------|
| THIS DRAWING IS A CONTROLLED DOCUMENT. |  | DWN                                       | JR RUTH     | 6/12/96             | <b>STE</b> TE Connectivity |
|  |  | CHK                                       | MS FEHER    | 6/12/96             |                            |
|  |  | APVD                                      | J GILLESPIE | 6/12/96             |                            |
|  |  | PRODUCT SPEC                              |             |                     |                            |
| DIMENSIONS:<br>mm [INCHES]             |  | TOLERANCES UNLESS<br>OTHERWISE SPECIFIED: |             | NAME                |                            |
|  |  | 0 PLC ± -                                 |             | RECEPTACLE, FASTON, |                            |
|  |  | 1 PLC ± -                                 |             | 6.35 [.250] SERIES  |                            |
|  |  | 2 PLC ± 0.38 [.015]                       |             | SIZE                |                            |
|  |  | 3 PLC ± -                                 |             | CAGE CODE           |                            |
|  |  | 4 PLC ± -                                 |             | DRAWING NO          |                            |
| ANGLES ± -                             |  | FINISH                                    |             | RESTRICTED TO       |                            |
| MATERIAL                               |  | FINISH                                    |             | 114-2036            |                            |
| BRASS                                  |  | SEE TABLE                                 |             | WEIGHT              |                            |
|  |  |   |             | -                   |                            |
|  |  | CUSTOMER DRAWING                          |             | SCALE 5:1           |                            |
|  |  |   |             | SHEET 1 OF 1        |                            |
|  |  |   |             | REV C               |                            |