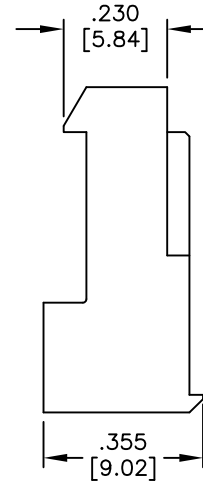
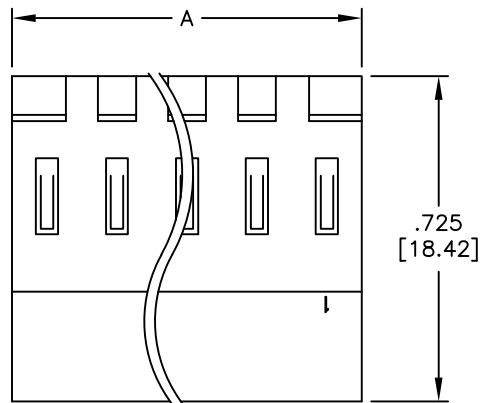
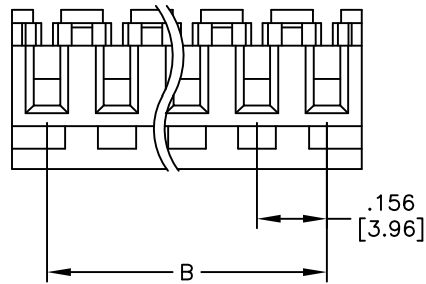


APPROVED: _____

DATE: _____ TITLE: _____

| Rev | AWO # | Description | Date | Appr |
|-----|-------|--------------------------|----------|--------|
| - | | RELEASED | 4/12/05 | |
| A | | CORRECTION ON FRONT VIEW | 01/25/07 | |
| B | | REDRAWN | 1/19/10 | |
| C | | UPDATE DIM. | 9/25/20 | AY/LL1 |



| PART NUMBER | WIRE SIZE | COLOR |
|--------------|-----------|--------|
| MTD-B-XX-A-2 | 18 AWG | ORANGE |
| MTD-B-XX-B-2 | 20 AWG | YELLOW |
| MTD-B-XX-C-2 | 22 AWG | RED |
| MTD-B-XX-D-2 | 24 AWG | WHITE |
| MTD-B-XX-E-2 | 26 AWG | BLUE |

SPECIFICATIONS:

Material:
Insulator: Nylon 66, rated UL 94V-2

Insulator color: (See chart)

Contacts: Phosphor Bronze

Plating:

Tin over Copper underplate overall

Electrical:

Voltage rating: 250 VAC max.

Current rating: 7A AC/DC.

Contact resistance: 10 mohms max. initial

Insulation resistance: 1,000 Mohms min.

Dielectric withstanding voltage: 1,500 VAC for 1 minute

Temperature Rating:

Operating temperature: -40°C to +105°C

Environmental:

Lead free, RoHS compliant



Positions: 2 thru 18

A = .156 [3.96] x No. of Positions

B = .156 [3.96] x No. of Spaces

UNLESS OTHERWISE SPECIFIED
ALL DIMENSIONS ARE INCHES [MM]
TOLERANCES: EXCEPT AS NOTED
INCHES HOLES
.X ± .10 Ø.X ± .10
.XX ± .020 Ø.XX ± .015
.XXX ± .015 Ø.XXX ± .010

| APPROVALS | | DATE |
|-----------|----|---------|
| DRAWN | SS | 4/12/05 |
| CHECKED | | |
| APPROVED | | |

ADAM
TECH
INTERCONNECTS

909 Rahway Avenue,
Union, NJ 07083
Phone: 908-687-5000
Fax: 908-687-5710

| TITLE | | |
|-----------------------------------------------------------------|--------------------------|--------------|
| IDC MASS TERMINATION HOUSING .156 [3.96] SPACING, CLOSED END | | |
| SIZE X | PART NO. MTD-B-XX-X-2 | REV. C |
| REF: S00004T | SCALE: NTS | SHEET 1 OF 1 |