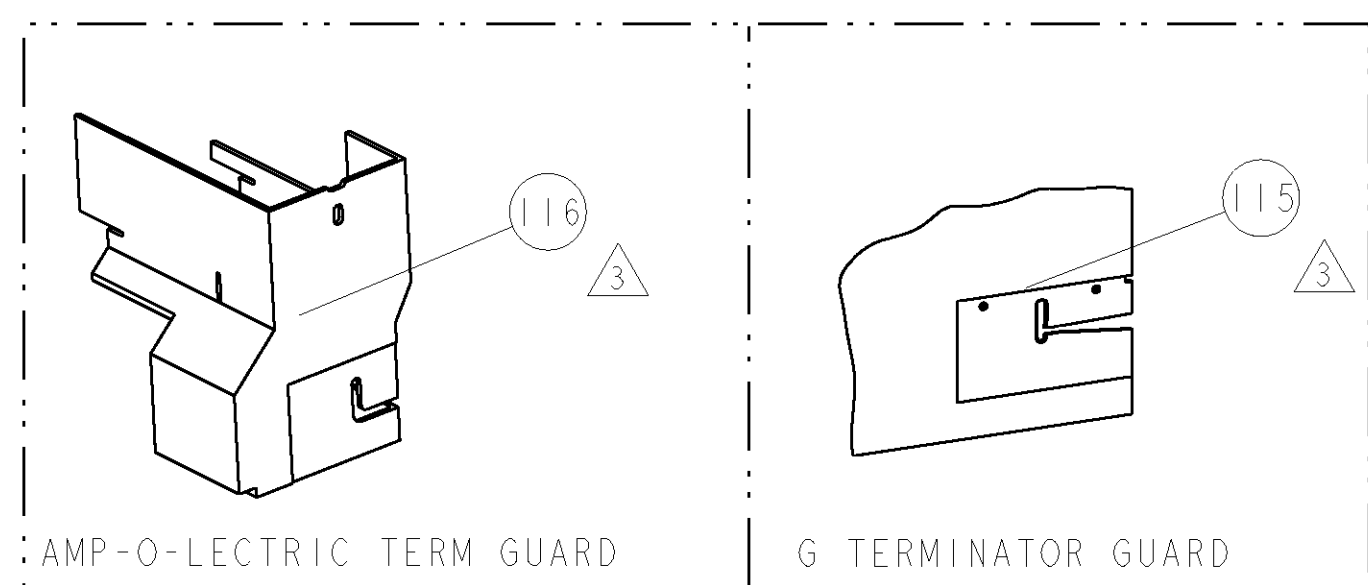


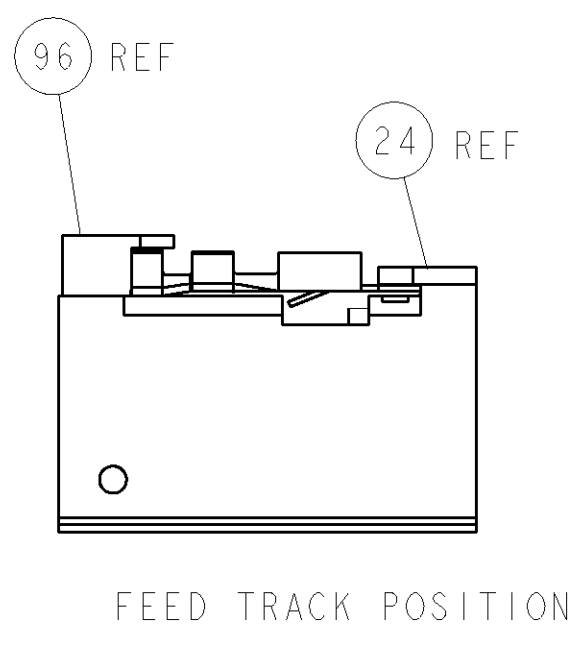
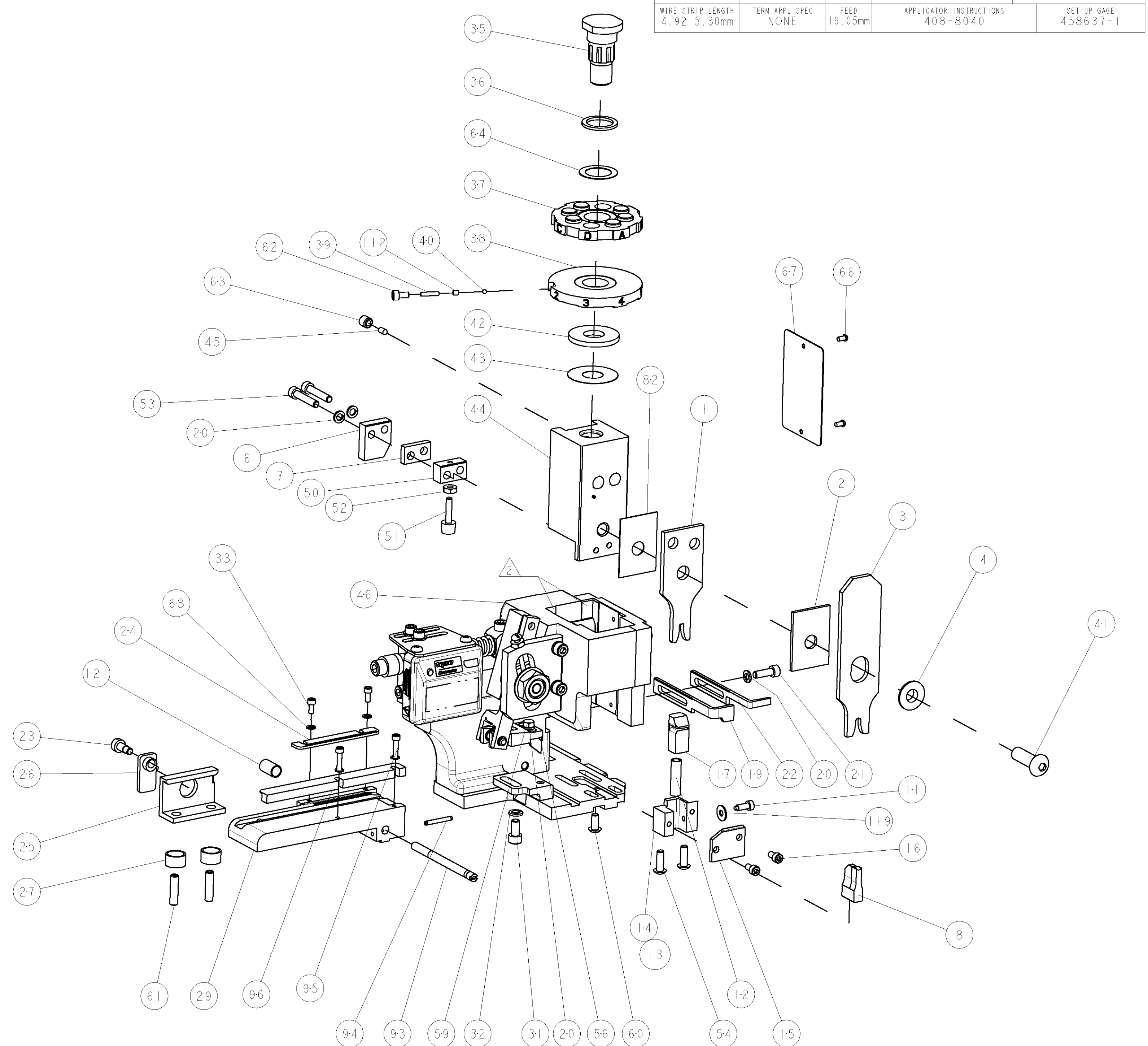
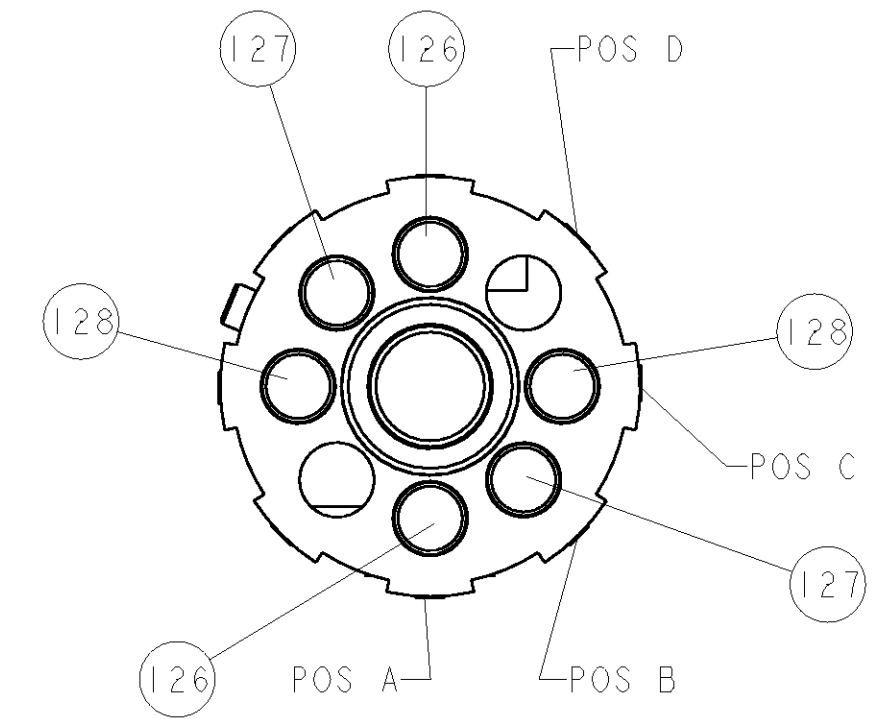
PART NUMBER	REV	FIRST USED	POWER UNIT	FEED TYPE	DESCRIPTION
1852564-1	A	122500-1	LEADMAKER	POST FEED	CUTS CARRIER
1852564-2	A	565435-5	BENCH MODEL K	PRE FEED	CUTS CARRIER
1852564-3	A	354500-1	BENCH MODEL G	PRE FEED	CUTS CARRIER
1852564-6	B	122500-1	LEADMAKER	POST FEED	CONTINUOUS CARRIER
7-1852564-7	A	-	-	-	SPARE PARTS



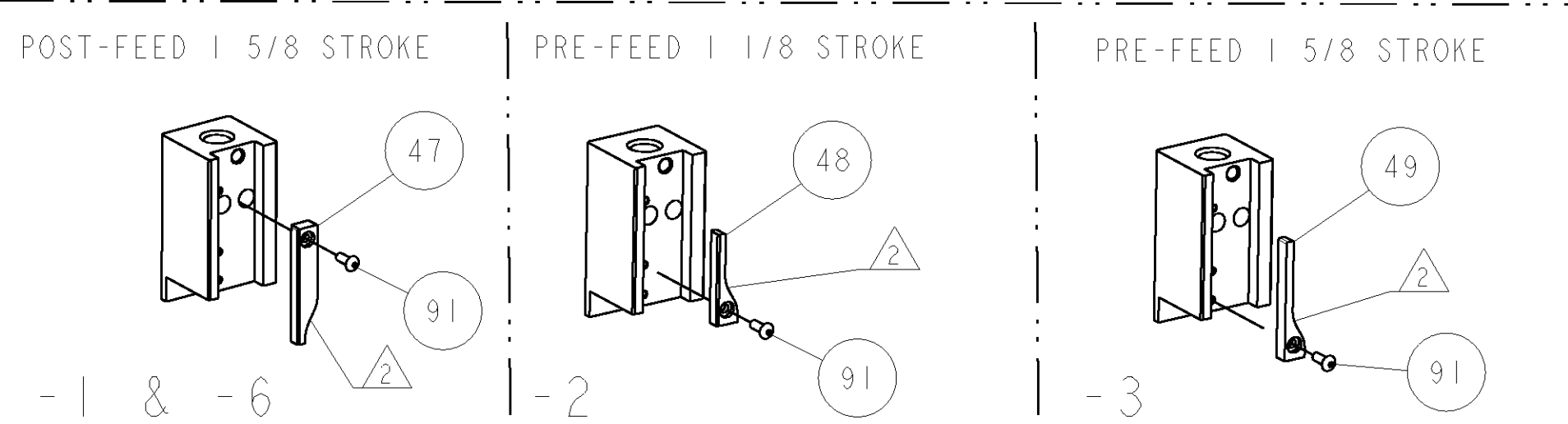
TERMINAL NAME: FASTON			
TE PN	MANF PN	PACKARD TERMINAL - PACKARD CRIMP SPECS	
1949514	06288218		
-	-	PAD LTR	CRIMP HEIGHT
-	-	A	1.6±0.05mm [.063±.002]
-	-	B	1.57±0.05mm [.062±.002]
-	-	C	1.55±0.05mm [.061±.002]
-	-	D	-
-	-	CRIMP	SIZE
-	-	WIRE	3.00mm [.118]
-	-	INSUL	3.81mm [.150]
-	-	FEED	19.05mm
-	-	WIRE STRIP LENGTH	4.92-5.30mm
-	-	TERM APPL SPEC	NONE
-	-	APPLICATOR INSTRUCTIONS	408-8040
-	-	SET UP GAGE	458637-1

LOC	DIST	REVISIONS			
A	66	F LTR	DESCRIPTION	DATE	DWN
		A	PRODUCT RELEASE	15NOV2007	CMR
		B	ECR-08-015669	23JUN2008	MY

- △ RECOMMENDED SPARE PARTS
- △ GREASE LIGHTLY
- △ GUARD MUST BE IN PLACE WHEN OPERATING APPLICATOR IN A BENCH MACHINE



QTY	REF	DESCRIPTION	ITEM NO
1	115	INSERT, GUARD	115
1	112	SPRING ASSIST AMP-O-MATOR APPLICATOR	112
1	96	GUIDE, FRONT STRIP	96
2	2	SCR, SKT HD CAP 4-40 X .500	95
1	1	PIN, SLOTTED SPRING .094 X .750	94
1	1	ADJUSTMENT SCREW	93
1	1	SCR, BTN SKT HD CAP 6-32 X .375	91
1	1	SPACER, CRIMPER	82
1	1	SF APPL INST 408-8040	72
1	1	GENERAL INSTRUCTION PKG	71
4	4	WASHER, SPRG LOCK, REG NO 4	68
1	1	PLATE, IDENTIFICATION	67
2	2	SCREW, DRIVE	66
1	1	WASHER, FLAT PRECISION	64
1	1	SCR, SET, SELF LOCKING 1/4-20 X .250	63
1	1	SCR, SKT HD CAP 6-32 X .25	62
2	2	SCR, SET, CUP POINT 10-32 X .750	61
1	1	SCR, BHSC, SELF-LOCKING, 8-32 X .375	60
1	1	SCR, HEX HD CAP 8-32 X .312	59
1	1	FEED PAWL	56
2	2	SCR, BTN SKT HD CAP 8-32 X .500	54
2	2	SCR, SKT HD CAP 8-32 X .875	53
1	1	NUT, HEX, REG 6-32	52
1	1	BUMPER, HOLD DOWN	51
1	1	SPACER, TONKER	50
1	1	CAM, PRE FEED, 1 5/8	49
1	1	CAM, PRE FEED, 1 1/8	48
1	1	CAM, POST-FEED 1 5/8	47
1	1	APPL. BASIC SUB ASSY (SIDE WISE MOCA)	46
1	1	PLUG, NYLON	45
1	1	RAM, SIDE FEED	44
1	1	SHIM SUB-ASSY	43
1	1	WASHER, RAM (.115)	42
1	1	SCR, BTN SKT HD CAP 5/16-24 X 1.00	41
1	1	BALL, STEEL	40
1	1	SPRING, COMPRESSION	39
1	1	DISC, INSULATION	38
1	1	WIRE DISC, ASSEMBLY	37
1	1	SPRING, COMPRESSION	36
1	1	POST, RAM	35
2	2	SCR, SKT HD CAP 4-40 X .250	33
1	1	WASHER, SPRG LOCK, REG NO 10	32
1	1	SCR, SKT HD CAP 10-32 X .375	31
1	1	PLATE, REAR STRIP GUIDE	29
2	2	SPRING, COMPRESSION	27
1	1	LEVER, DRAG RELEASE	26
1	1	DRAG, TERMINAL	25
1	1	FRONT STRIP GUIDE	24
1	1	SCR, SHLD, SLOT HD, 3/16 DIA	23
1	1	STRIPPER	22
1	1	SCR, SKT HD CAP 8-32 X .500	21
4	4	WASHER, SPRG LOCK, REG NO 8	20
1	1	STRIPPER	19
1	1	FLOATING SHEAR, REAR	17
2	2	SCR, SKT HD CAP 6-32 X .250	16
1	1	PLATE, REAR SHEAR	15
1	1	SHEAR HOLDER, REAR	14
1	1	SHEAR HOLDER, CONT CARRIER	13
1	1	SPRING, COMPRESSION	12
1	1	STOP, SHEAR	11
1	1	-	10
1	1	-	9
1	1	ANVIL, COMBINATION	8
1	1	SPACER	7
1	1	DEPRESSOR SHEAR, REAR	6
1	1	BLOCK, FL CRIMPER SPACER	4
1	1	CRIMPER, INSUL O PREMIUM	3
1	1	SPACER, CRIMPER	2
1	1	CRIMPER, WIRE	1



2	2	2	2	2	3-354779-0	PIN, WIRE DISC, .3140	128
2	2	2	2	2	2-354779-7	PIN, WIRE DISC, .3125	127
2	2	2	2	2	2-354779-4	PIN, WIRE DISC, .3110	126
1	1	1	1	1	1-22281-8	SPRING, COMPRESSION	121
1	1	1	1	1	21055-5	WASHER, FLAT, REG NO 6	119
1	1	1	1	1	455749-1	GUARD WINDOW	116
-77	-6	-3	-2	-1	U/M	PART NO	DESCRIPTION

DIMENSIONS: INCHES
 TOLERANCES UNLESS OTHERWISE SPECIFIED:
 0 PLC ±.01
 1 PLC ±.01
 2 PLC ±.01
 3 PLC ±.001
 4 PLC ±.001
 ANGLES ±.001

MATERIAL: FINISH: WEIGHT: SCALE: 3:5 SHEET 1 OF 1 REV B

CUSTOMER DRAWING: SCALE: 3:5 SHEET 1 OF 1 REV B

Tyco Electronics
 Harrisburg, PA 17105-3608

SIDE FEED HDM APPLICATOR

CUSTOMER VIEWABLE ASSEMBLY