

Interface module - FLKM-D25 SUB/S/LA - 2281649

Please be informed that the data shown in this PDF Document is generated from our Online Catalog. Please find the complete data in the user's documentation. Our General Terms of Use for Downloads are valid (<http://phoenixcontact.com/download>)




VARIOFACE module, with screw connection and D-Subminiature pin strip, for mounting on NS 35/7.5 or NS 32, with light indicator, 25-pos.

The illustration shows version FLKM-D37 SUB/B/LA



Key commercial data

| | |
|--------------------------------------|---|
| Packing unit | 1 pc |
| GTIN |  4 017918 054892 |
| Weight per Piece (excluding packing) | 195.54 GRM |
| Custom tariff number | 85369010 |
| Country of origin | Germany |

Technical data

Dimensions

| | |
|--------|---------|
| Width | 90 mm |
| Height | 77 mm |
| Depth | 58.5 mm |

Ambient conditions

| | |
|---|------------------|
| Ambient temperature (operation) | -20 °C ... 50 °C |
| Ambient temperature (storage/transport) | -20 °C ... 70 °C |

General

| | |
|---|---------|
| Nominal voltage U_N | 24 V DC |
| Max. current carrying capacity per branch | 2.5 A |
| Number of positions | 25 |

Interface module - FLKM-D25 SUB/S/LA - 2281649

Technical data

General

| | |
|------------------------|-----------------------|
| Status display | LED |
| Test voltage | 500 V (50 Hz, 1 min.) |
| Mounting position | any |
| Standards/regulations | IEC 60664 |
| | DIN EN 50178 |
| | IEC 62103 |
| Pollution degree | 2 |
| Surge voltage category | II |

Connection data for connection 1

| | |
|--|---------------------|
| Connection name | PCB connection |
| Connection in acc. with standard | IEC / EN |
| Connection method | Screw connection |
| Conductor cross section solid min. | 0.2 mm ² |
| Conductor cross section solid max. | 4 mm ² |
| Conductor cross section stranded min. | 0.2 mm ² |
| Conductor cross section stranded max. | 2.5 mm ² |
| Conductor cross section AWG/kcmil min. | 24 |
| Conductor cross section AWG/kcmil max | 12 |
| Stripping length | 8 mm |
| Screw thread | M3 |

Classifications

eCl@ss

| | |
|------------|----------|
| eCl@ss 4.0 | 27250313 |
| eCl@ss 4.1 | 27250313 |
| eCl@ss 5.0 | 27250313 |
| eCl@ss 5.1 | 27250313 |
| eCl@ss 6.0 | 27242608 |
| eCl@ss 7.0 | 27141152 |
| eCl@ss 8.0 | 27141152 |

ETIM

| | |
|----------|----------|
| ETIM 2.0 | EC001434 |
| ETIM 3.0 | EC001604 |
| ETIM 4.0 | EC001604 |
| ETIM 5.0 | EC002780 |

Interface module - FLKM-D25 SUB/S/LA - 2281649

Classifications

UNSPSC

| | |
|---------------|----------|
| UNSPSC 6.01 | 30211824 |
| UNSPSC 7.0901 | 39121421 |
| UNSPSC 11 | 39121421 |
| UNSPSC 12.01 | 39121421 |
| UNSPSC 13.2 | 39121421 |

Approvals

Approvals

Approvals

GOST

Ex Approvals

Approvals submitted

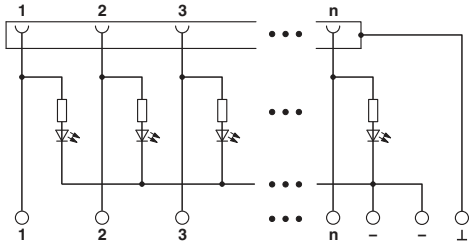
Approval details



Drawings

Interface module - FLKM-D25 SUB/S/LA - 2281649

Circuit diagram



Schematic diagram

