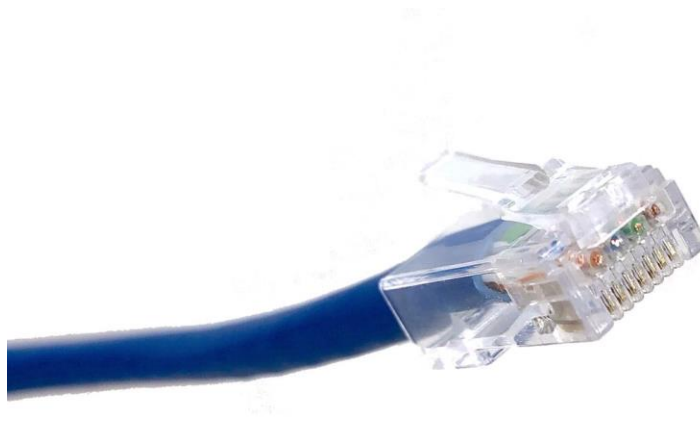


1ft CAT 6 RJ45 UTP Networking Patch Cable (Blue) Non Booted (E08-001BL-NB)



CAT 6 UTP NON-BOOTED PATCH CABLE BLUE COLOR

- High performance Cat6 Non-Booted Ethernet patch cable is perfect for connecting computers with devices such as routers, switches, patch panels and more.
- Non-Booted design makes it easier to plug and unplug and improves airflow and cable management in tight spaces.
- RJ45 connectors with 50-micron gold-plated contacts ensure clear transmission by eliminating signal loss due to corrosion.
- Our Cat6 cables are certified to handle Gigabit Ethernet with a bandwidth of up to 550 MHz.
- 100% bare copper wires are compliant with EIA/TIA standard by UL and ETL.
- RoHS compliant.

Connector : RJ45 plug with 50 micron gold plating contacts

Conductor : 4 twisted pairs 24 AWG stranded bare copper

Cable Color : Blue Color

without us, you are just not connected! ■