

MATERIALS AND FINISHES

SOLDER TAIL STEEL WIRE
PLATED TIN

BODY ZINC ALLOY
PLATED NICKEL

LOCKWASHER PHOSPHOR BRONZE
PLATED NICKEL

HOUSING PBT
COLOR BLACK

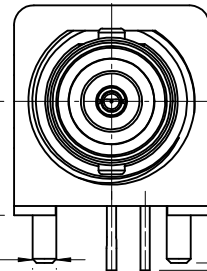
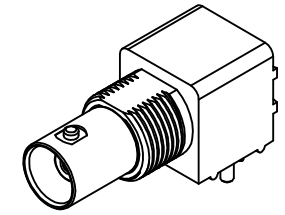
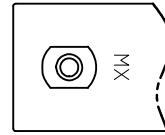
JAM NUT BRASS
PLATED NICKEL

CENTER CONTACT PHOSPHOR BRONZE
PLATED GOLD/TIN

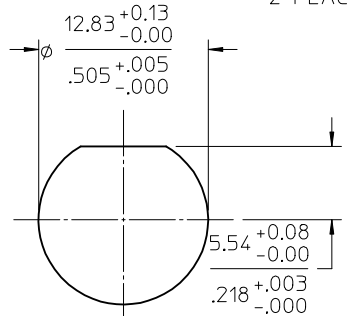
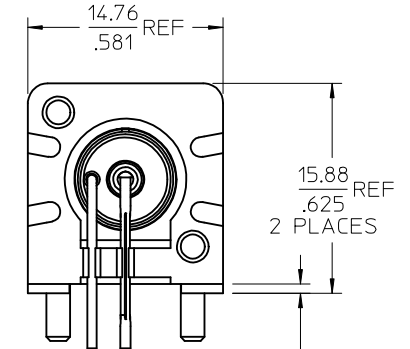
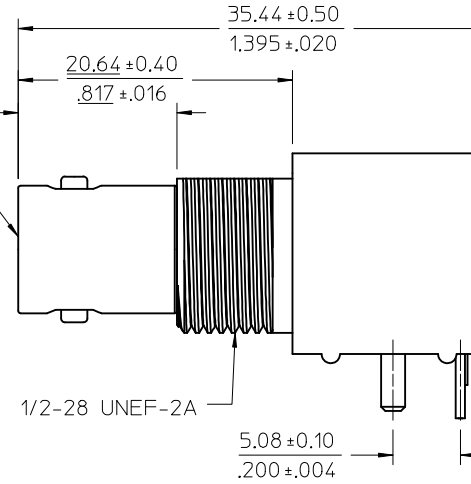
INSULATOR POLYPROPYLENE

MOUNTING POST BRASS
PLATED TIN

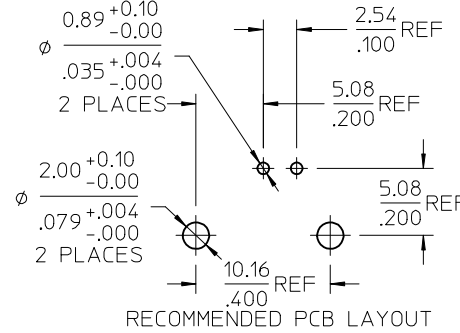
PACKAGING: TRAY



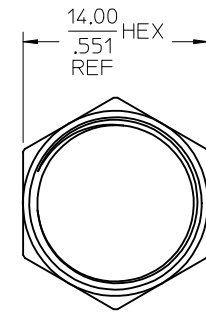
12.00 ± 0.30
.472 ± 0.012
BNC JACK
INTERFACE



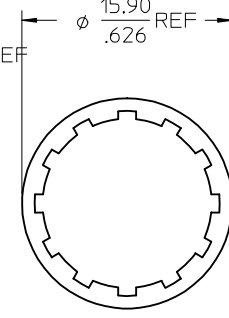
RECOMMENDED MOUNTING HOLE
MAXIMUM PANEL THICKNESS: 5.5(.217)
RECOMMENDED MOUNTING TORQUE:
0.56 N-m(5 IN-LBS)



RECOMMENDED PCB LAYOUT



JAM NUT



LOCKWASHER

PART # 73138-5003

PS-89675-103

ELECTRO/MECH PERFORM.

SPECIFICATION

DESCRIPTION

CHG: PS CHGD
89675-103 WAS
73598-0077
PER RF15-E119

EC NO: URF2015-0422
DRW: CWE102 2015/02/05
CHKD:
APPR: YCHENG 2015/02/10

REV: F2

QUALITY SYMBOLS
▽=0
▽=0

GENERAL TOLERANCES (UNLESS SPECIFIED)
4 PLACES ± --- ± ---
3 PLACES ± --- ± ---
2 PLACES ± --- ± ---
1 PLACE ± --- ± ---
ANGULAR ± 2 °
DRAFT WHERE APPLICABLE
MUST REMAIN
WITHIN DIMENSIONS

DIMENSION STYLE
MM/IN
DRAWN BY DATE
LILY 1992/01/23
CHECKED BY DATE
DENG 1992/01/23
APPROVED BY DATE
MATERIAL NO.
731385003
SIZE
C

SCALE
DESIGN UNITS
METRIC
THIRD ANGLE PROJECTION
TITLE
BNC JACK, R/A PCB
50 OHMS, EWR-2081
BNC-J/BLK/PCB
molex MOLEX INCORPORATED
DOCUMENT NO.
SD-73138-5003
SHEET NO.
1 OF 1
THIS DRAWING CONTAINS INFORMATION THAT IS PROPRIETARY TO MOLEX INCORPORATED AND SHOULD NOT BE USED WITHOUT WRITTEN PERMISSION