



**ANATECH ELECTRONICS INC**  
RF & Microwave Filters & Products

# 1090 MHz Ceramic Bandpass Filter

**Part Number: AM1090B1181**



## Electrical specifications

**Center Frequency:** 1090 MHz  
**Bandwidth:** 30 MHz min  
**VSWR:** 1.5 : 1 max  
**Input / Output Impedance:** 50 Ohms  
**Passband:** 1075-1105 MHz  
**Passband Insertion Loss:** 2.7 dB typ. (3.0 dB max)  
**Passband Ripple:** 0.5 dB max  
**Rejection:** 32 dBc min at Fo+/- 70 MHz  
**Rejection 2:** 55 dBc min at 970 MHz  
**Rejection 3:** 30 dBc min at 1030 MHz  
**Rejection 4:** 43 dBc min at 1190 MHz  
**Power Handling:** 5 watts

## Mechanical

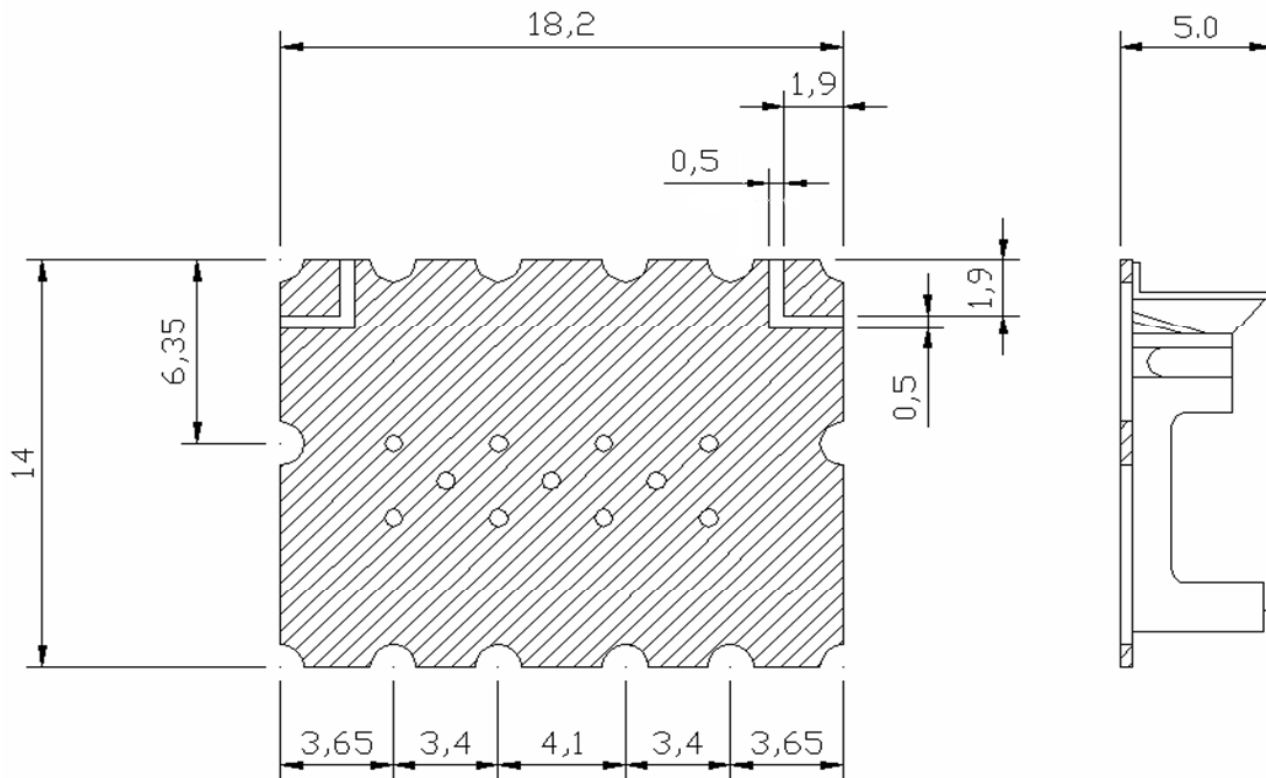
**Mounting Method:** SMT  
**Dimensions:** 18.2 x 14 x 5 mm

## Environmental

**Operating Temperature:** -40°C to 85°C  
**Storage Temperature:** -50°C to +90°C

**This product is RoHs compliant.**

## Outline Drawing:



Unit : mm  
Tolerance : ± 0.3



### Response Plot:

