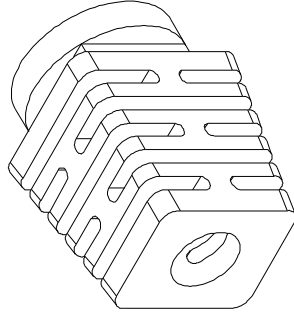
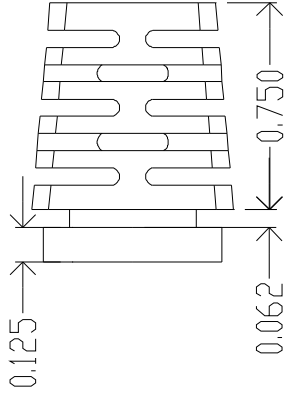
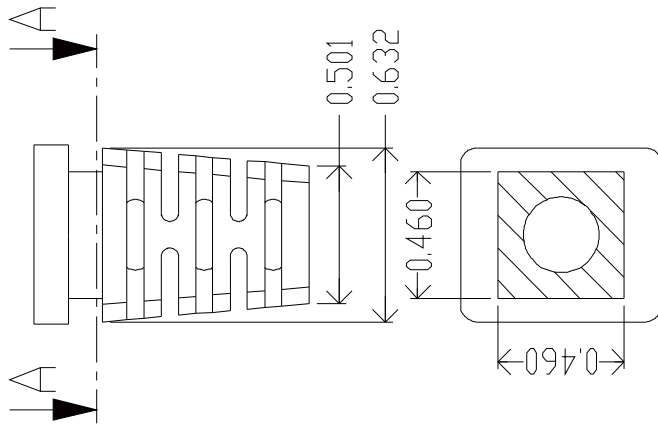
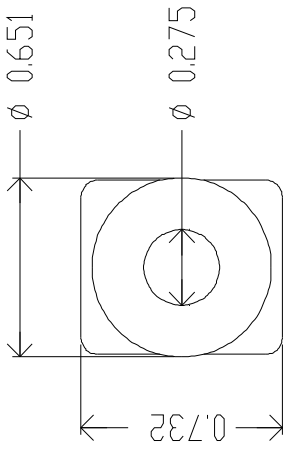


REVISIONS		DATE	APPROVED
ZONE	REV.	DATE	APPROVED



MOLD MATERIAL: ISC P/N: 5000214, PVC, M1472, Black, RoHS

DRAWN	NAME	DATE	ISC Engineering
R. FIERRO	R. FIERRO	09/29/08	4351 Schaefer Ave. Chino, CA 91710
CHECKED			Ph: 909-596-3315 Fax: 909-596-3335
ENG APPR.			www.iscengineering.com
MFG APPR.			www.overmoldtooling.com
D.A.			
COMMENTS:			
DIMENSIONS ARE IN INCHES			
TOLERANCES:			
FRACTIONAL ±			
ANGULAR: MACH ±			
BEND			
TWO PLACE DECIMAL ±			
THREE PLACE DECIMAL ±			
MATERIAL			
FINISH			
USED ON			
APPLICATION			
DD	NDT	SCALE	DRAWING

A-A (1.5 : 1)

Dimensions are subject to change.
 PROPRIETARY AND CONFIDENTIAL
 THE INFORMATION CONTAINED IN THIS
 DRAWING IS THE SOLE PROPERTY OF
 ISC ENGINEERING. ANY REPRODUCTION IN
 PART OR AS A WHOLE WITHOUT THE WRITTEN
 PERMISSION OF ISC ENGINEERING IS
 PROHIBITED.



1465080-275-B-460X460-651-0	SCALE: 2:1	WEIGHT:
SIZE DWG. NO. A	1467535	REV.
SHEET 21		SHEET OF 1