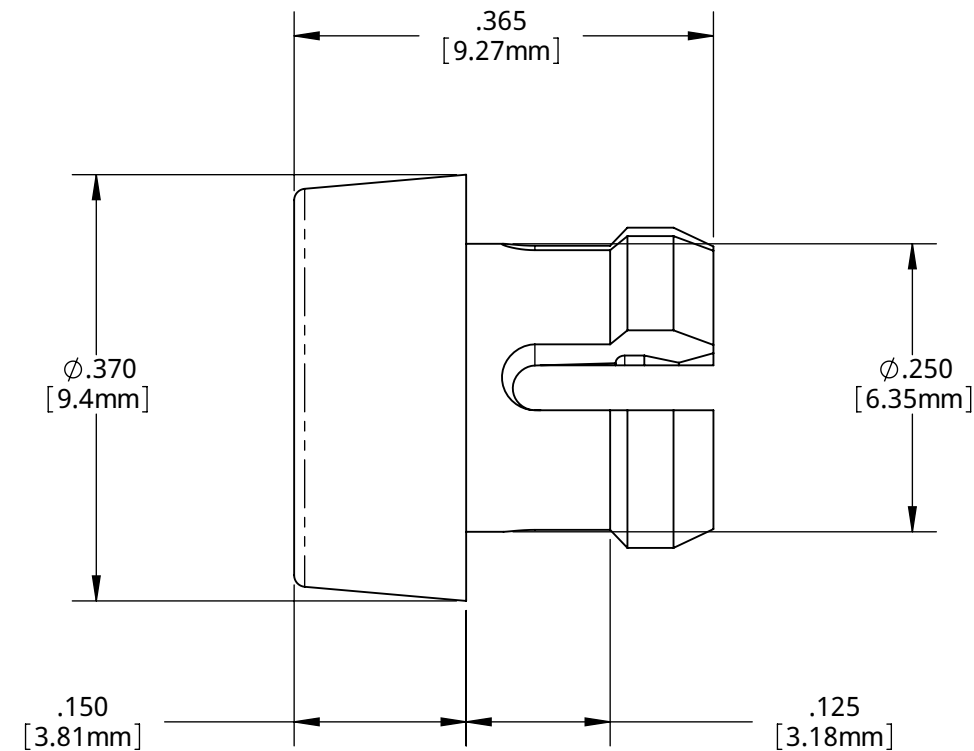
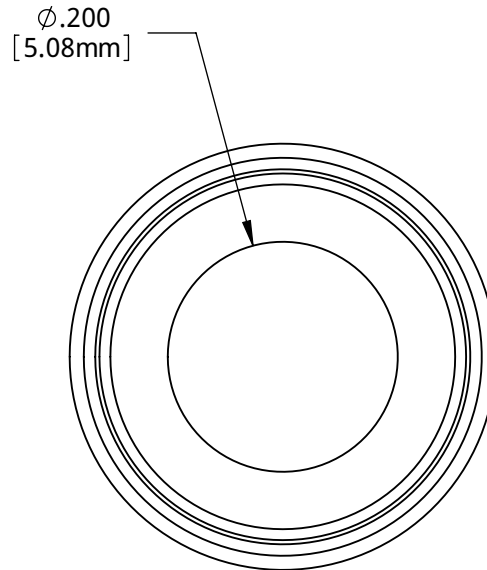
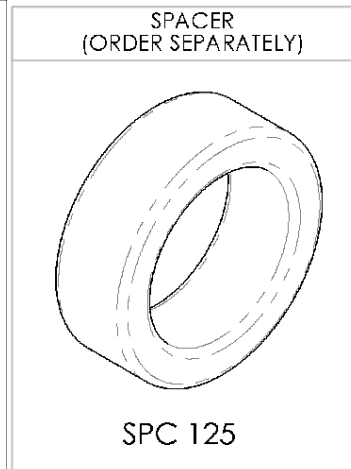
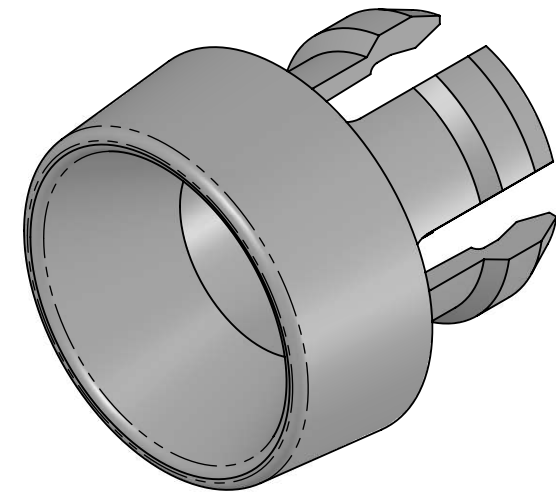


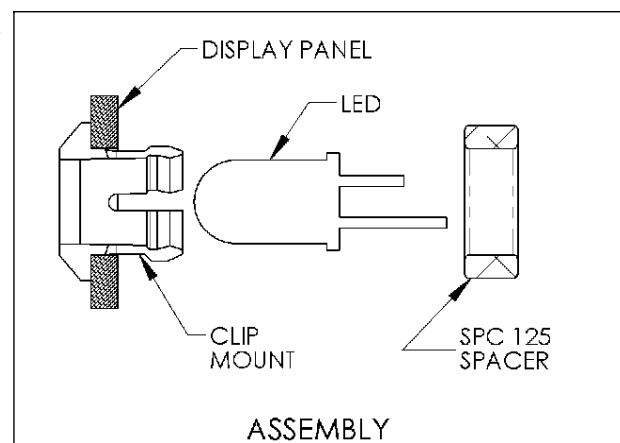
NOTES:

1. MOUNTING: Mounts in a  $\phi .250 \pm .002$  [ $\phi 6.35\text{mm} \pm .05$ ] panel hole on .375 [9.5mm] centers. Panel thickness .031 [.8 mm] to .125 [3.18mm]. Panel hole should be deburred, but not chamfered.
2. ASSEMBLY: Insert clip mount through panel hole, insert LED into clip mount, slide spacer over clip mount.
3. U.S. & Foreign Pat. Issued & Pend.

REVISIONS				
EC N#	REV.	DESCRIPTION	DATE	INITIALS
	001	REVISED PER EC R111009AZ01	6-20-10	SMU



ORDERING CODE : CLP 129 BLK



UNLESS OTHERWISE SPECIFIED DIMENSIONS ARE IN INCHES:		MATERIAL POLYCARBONATE , UL 94-V2, BLACK		VISUAL COMMUNICATIONS COMPANY, INC. 190 Bosstick Boulevard, Suite 101 San Marcos, CA 92069 USA Phone (760) 560-1300 Fax (760) 560-1301 email vccsales@vcc-lite.com	
ANGLES $\pm 1^\circ$	DECIMALS .X $\pm .020$ .XX $\pm .010$ .XXX $\pm .005$	FINISH		TITLE: <b>CLIPLITE® CLP 129 MOUNT</b>	
BREAK ALL CORNERS AND SHARP EDGES .030 MAX		THIRD ANGLE PROJECTION		APPROVAL	
PROPRIETARY AND CONFIDENTIAL THE INFORMATION CONTAINED IN THIS DRAWING IS THE SOLE PROPERTY OF VISUAL COMMUNICATIONS COMPANY, INC. ANY REPRODUCTION IN PART OR AS A WHOLE WITHOUT THE WRITTEN PERMISSION OF VISUAL COMMUNICATIONS COMPANY, INC IS PROHIBITED.		DRAWN: SMU		DATE: 6-20-10	
		CHECKED: DZ		DATE: 6-20-10	
		DO NOT SCALE DRAWING		SCALE: 1:1	
		SIZE: B		DWG. NO.: CLP 129 BLK	
		REV: 001		SHEET 1 OF 1	