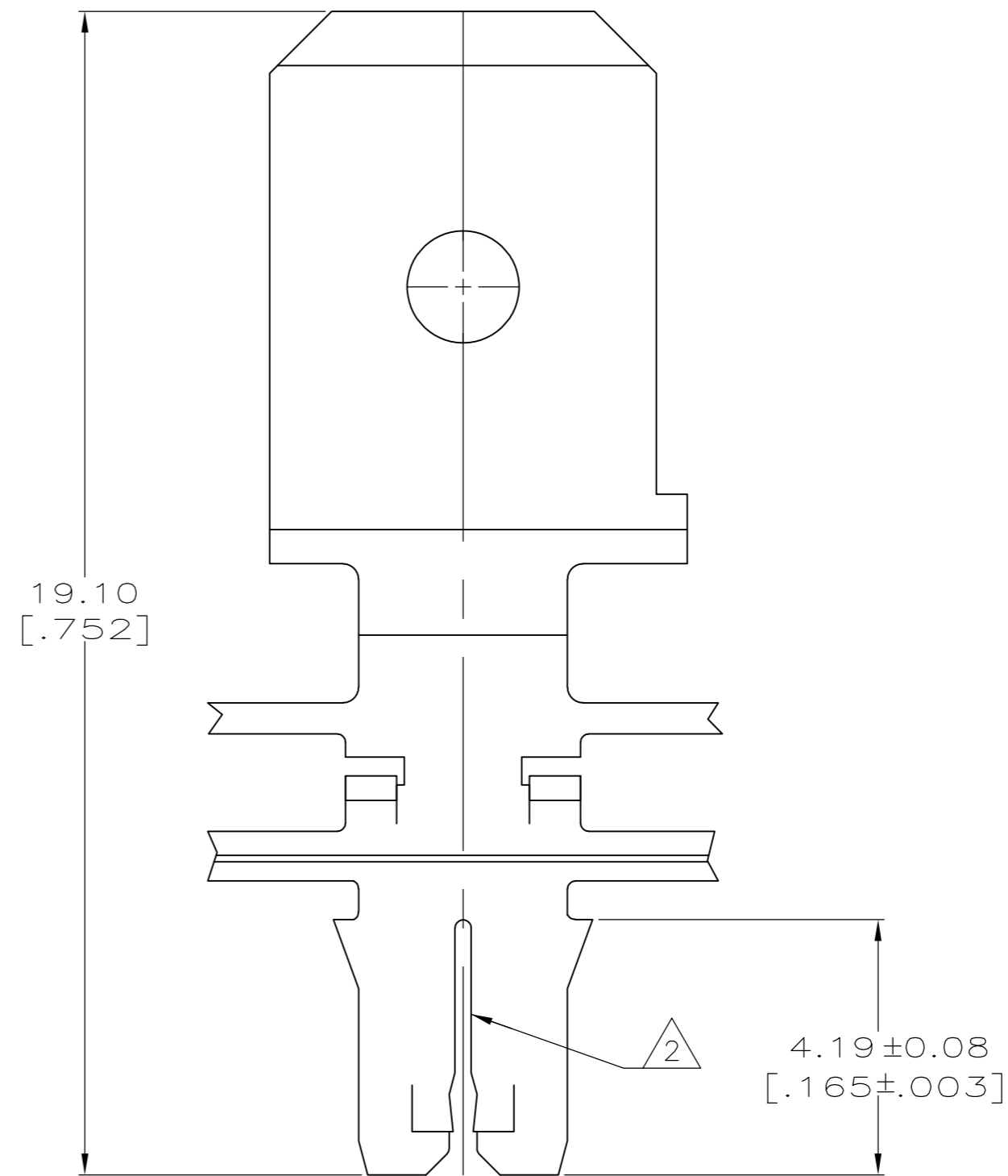
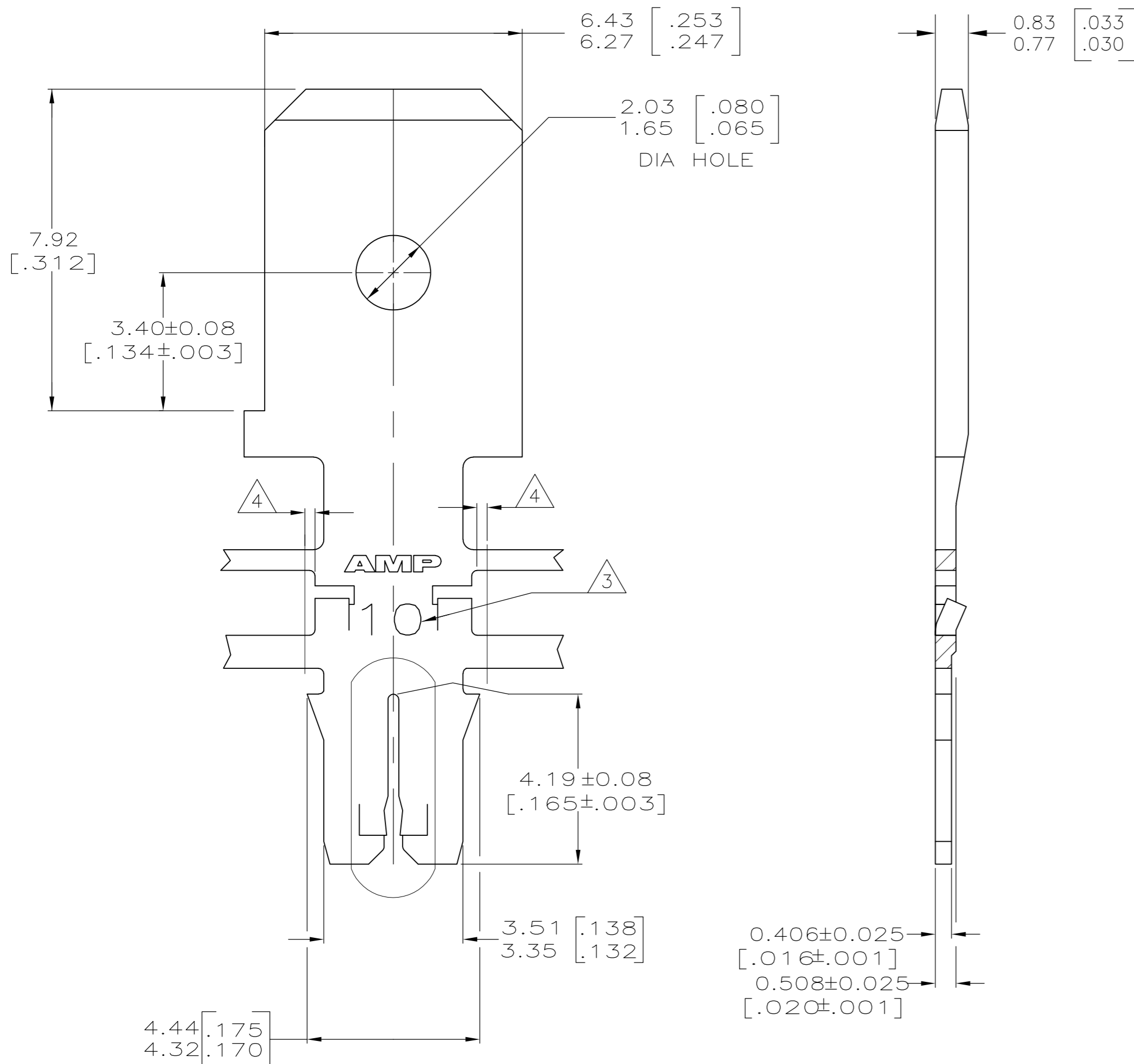


THIS DRAWING IS UNPUBLISHED. RELEASED FOR PUBLICATION  
 © COPYRIGHT - By - ALL RIGHTS RESERVED.

LOC		DIST		REVISIONS			
P	LTR	DESCRIPTION		DATE	DWN	APVD	
AF	50	G1	REVISED PER ECR-13-019898		24DEC2013	GRZ	JL

- 1 CONTINUOUS STRIP ON REELS WITH TERMINALS LOCATED ON 8.38±0.08 [.330±.003] CENTERS.
- △2 SLOT ACCEPTS 0.36-0.51mm [#27-#24] AWG COPPER MAGNET WIRE. TWO WIRES OF THE SAME SIZE MAX PER SLOT
- △3 IDENTIFICATION NUMBER 10 FOR THE MAGNET WIRE SLOT SIZE
- △4 0.25[.010] MAX CARRIER CUT-OFF TABS



OBSELETE	082 PRE-MILLED BRASS	△5 63718-2
	<del>4M PRE-MILLED BRASS</del>	<del>63718-1</del>
MATERIAL		PART NUMBER

THIS DRAWING IS A CONTROLLED DOCUMENT.		DWN 9-27-93 L.A.MAYER	<b>STE</b> TE Connectivity	
DIMENSIONS: INCHES		CHK 9-27-93 M.S. FEHER		
TOLERANCES UNLESS OTHERWISE SPECIFIED:		APVD 9-27-93 A.HUNT III	NAME	
0 PLC ± -	1 PLC ± -	PRODUCT SPEC	TAB, 6.35 [.250] FASTON™	
2 PLC ± 0.13 [.005]	3 PLC ± -	APPLICATION SPEC	MAG-MATE™ Slim Line	
4 PLC ± -	ANGLES ± -	108-1484	SIZE	CAGE CODE
FINISH	0.002032 [.000080] MIN TIN PLATE	114-2140	A2	00779
MATERIAL	SEE TABLE	WEIGHT -	DRAWING NO	RESTRICTED TO
CUSTOMER DRAWING		SCALE 10:1	SHEET 1 of 1	REV G1