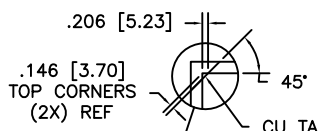


TOP LEVEL NUMBER	SKU NUMBER	TYPE	DIM "A" (TOTAL GLASS TO FLEXTAIL CONN)	PRODUCT SPEC
DSTK9015-3402	98-0003-3213-4	DUAL	12.00" [304.8]	33626/34017

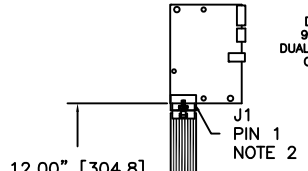
OGA DIAG: 41.36 [1050.6]
AA DIAG: 40.00 [1016.0]

CORNER TAPE CHAMFER DETAIL

DUAL
DST-TC-3402DC
98-0003-3214-2
DUAL MODE CONTROLLER
COMPONENT SIDE



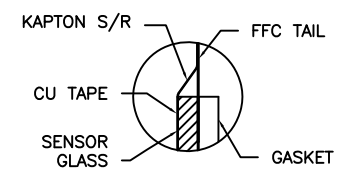
CU TAPE
CORNER
COVERAGE



12.00" [304.8]

15.920±0.030 [404.37±0.76]

.41 [10.32]



SECTION A-A
SCALE: 8/1

SENSOR FRONT

18.41 [467.6] 2X
GASKET
NOTE 3

19.795 [502.80]
AA

20.608 [523.44]
OGA

J1 PINOUT	
1	CH 3
2	CH 2
3	PWR
4	2.5V
5	GRD
6	PWR
7	CH 0
8	CH 1

.083 [2.11]
GLASS
.170 [4.32]
TOTAL THK.

33.66 [855.1] GASKET 2X
NOTE 3

1.10 [27.9]
REF

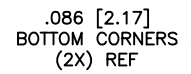
.41 [10.32]

35.051 [890.30] AA

35.864 [910.94] OGA

NOTES:

- WEIGHT OF GLASS IN GRAMS: 2633±10%
- 8 PIN AMP CONNECTOR
LATCH STYLE HOUSING P/N: 487526-7
TIN CONTACTS P/N: 2-487406-4
HOUSING ORIENTED WITH LATCH UP
- GASKET ON SENSOR BACKSIDE



CU TAPE
CORNER
COVERAGE

CORNER TAPE CHAMFER DETAIL

INCHES [MM]	
FINISH	AS MANUFACTURED
WELD	AS MANUFACTURED
ANGLE	±1°
DO NOT SCALE DRAWING	
SCALE	1 = 1

DATE	BY	APP'D	DATE
	A. Hartfels		9/08

04	REVISE PER CO 030743	7/09	ISB
03	RELEASE PER CO 029508	10/08	IAH
MKT DWG DST2270DX 40"-2			
AUTOCAD		1 OF 1	
36131-MKT		04	