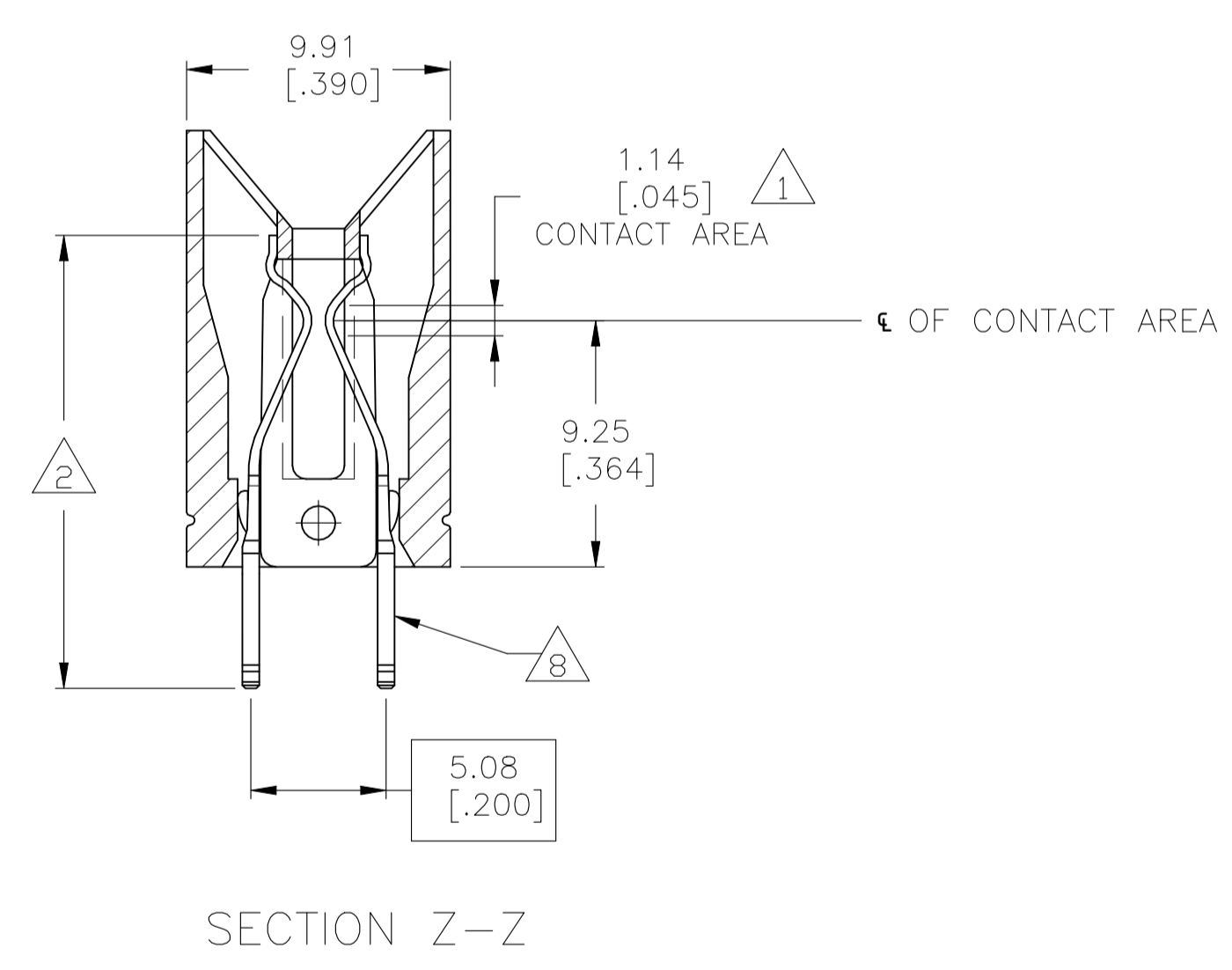
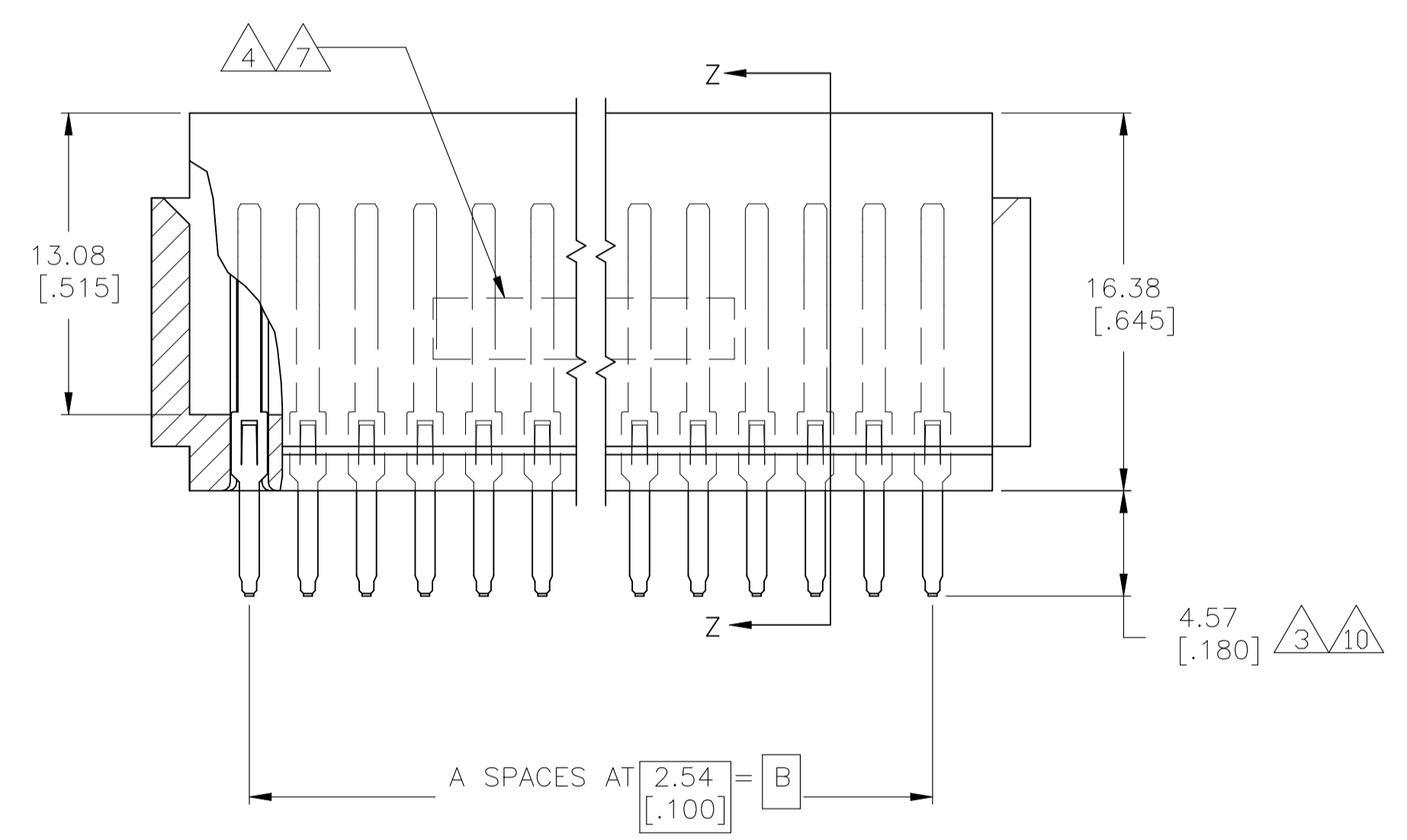
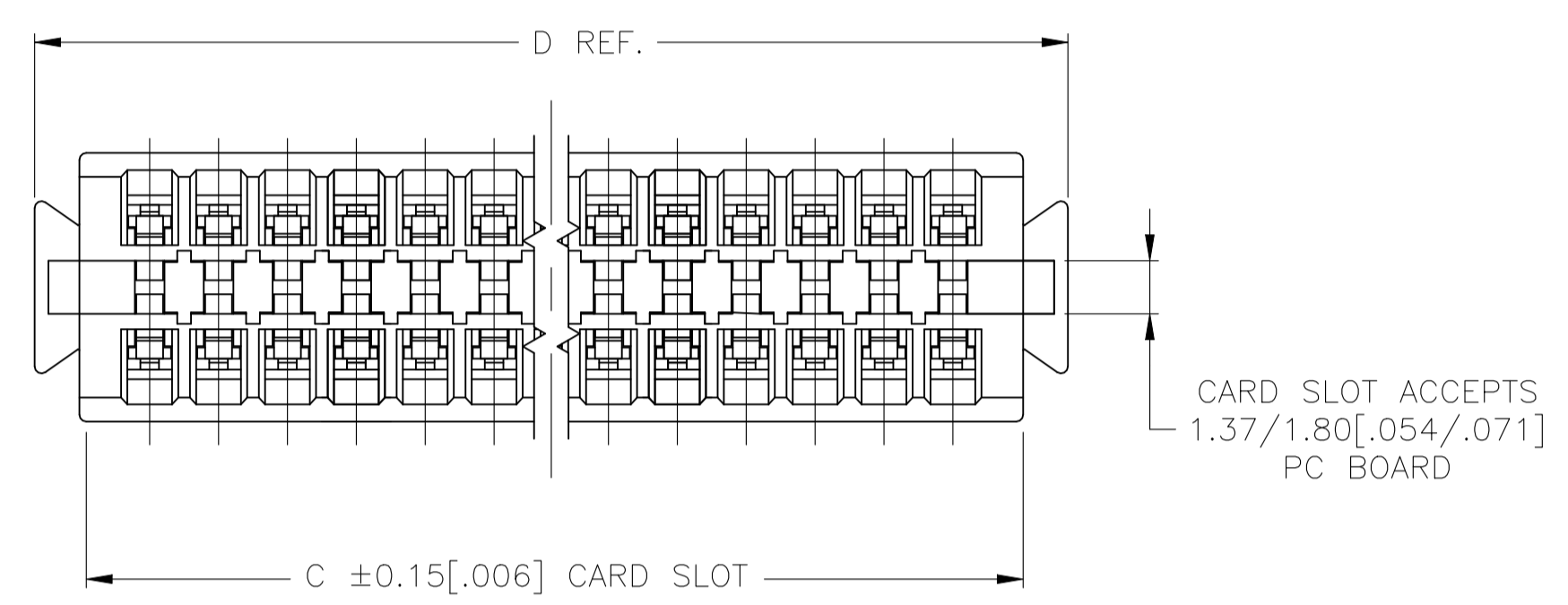


REVISIONS					
REV	DATE	DESCRIPTION	BY	CHK	APP'D
G	16AUG2021	REVISED PER ECN-21-113138	RZ	HL	

- 1 GOLD PLATE .00076 [.000030] MIN. THICK.
- 2 NICKEL PL. .00127[.000050] MIN. THK. PER QQ-N-290.
- 3 SOLDER PL. .00076[.000030] MIN. THK.
- 4 STAMPED P/N & DATE CODE.
- 5. OPTIONAL: KEYING PLUG FOR INTERCONTACT KEYING IS 118982-1.
- 6. OPTIONAL: CARD GUIDE (BASE NO 117169).
- 7 ALL PARTS ASSEMBLED IN CHINA MUST BE STAMPED "ASSY IN CHINA". THE WORD "CHINA" CAN BE SUBSTITUTED ONLY WHERE PART SIZE PROHIBITS STAMPING "ASSY IN CHINA", INK PER 115-9009, APPROX WHERE SHOWN, SIDE OPTIONAL.
- 8 PRELIMINARY PART - NOT RELEASED FOR PRODUCTION.
- 10 MATTE TIN PL. .00076[.000030] MIN. THK.



REV	DATE	DESCRIPTION	BY	CHK	APP'D
1		44.04[1.734]			
2		31.34[1.234]			
3		44.04[1.734]			
4		31.34[1.234]			

THIS DRAWING IS A CONTROLLED DOCUMENT.

DIMENSIONS:	TOLERANCES UNLESS OTHERWISE SPECIFIED:	DIN R BROWN 22MAY01	CHK R BENDROF 22MAY01	APPROVED M MILLER 22MAY01		NAME	
0 PLC ± -	1 PLC ± -	TE Connectivity		CONNECTOR, AMP PACE .100 X .200			
2 PLC ± -	3 PLC ± 0.25(.010)	APPLICATION SPEC		114-26002			
4 PLC ± -	ANGLES ± -	MATERIAL: HOUSING: VALOX 420 STD. BLACK		WEIGHT: 0.000000		A1 00779 C=147885	
CONTACTS: COPPER NICKEL		FINISH: 1 2 3 10		CUSTOMER DRAWING		SCALE: 4:1 SHEET 1 OF 1 REV G	