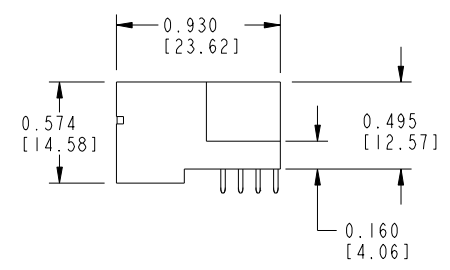
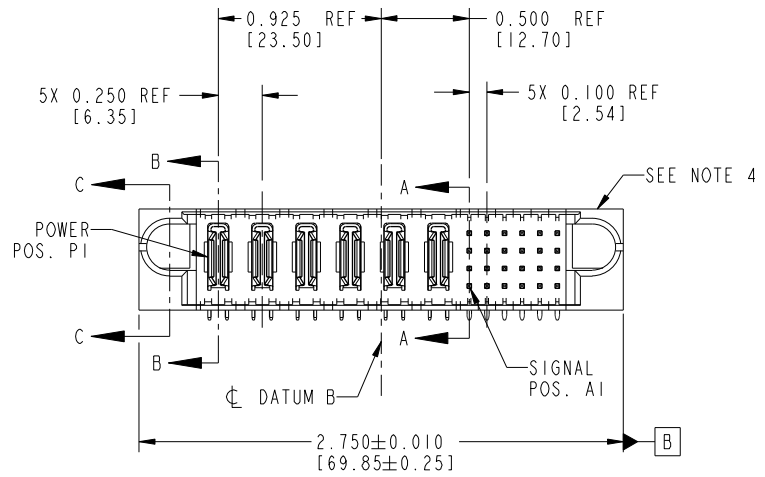


Tous droits strictement réservés. Reproduction ou communication à des tiers interdite sous quelque forme que ce soit sans autorisation écrite du propriétaire. Propriété de c.FCI. Droits de reproduction FCI.



All rights strictly reserved. Reproduction or issue to third parties in any form whatever is not permitted without written authority from the proprietor. Property of FCI. Copyright FCI.

PRODUCT NO.	ROWS	POWER						SIGNAL							
		E1	P1	P2	P3	P4	P5	P6	1	2	3	4	5	6	E2
51732-043	D C B A														
NOTE ③			PA	PA	PA	PA	PA	PA	UUUUHH	TTTTGG	SSSSFF	RRRR	EEEE		



CODE	DIM "M" MATING LENGTH	CONTACT TYPE
E	0.220 [5.59]	SIGNAL
F	0.220 [5.59]	SIGNAL
G	0.220 [5.59]	SIGNAL
H	0.220 [5.59]	SIGNAL
R	0.270 [6.86]	SIGNAL
S	0.270 [6.86]	SIGNAL
T	0.270 [6.86]	SIGNAL
U	0.270 [6.86]	SIGNAL
PA	N/A [N/A]	POWER

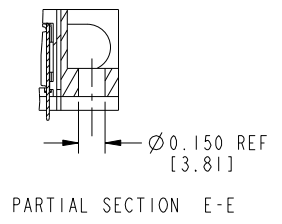
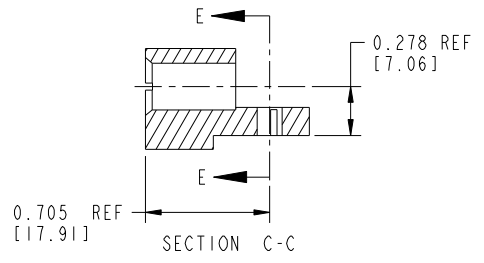
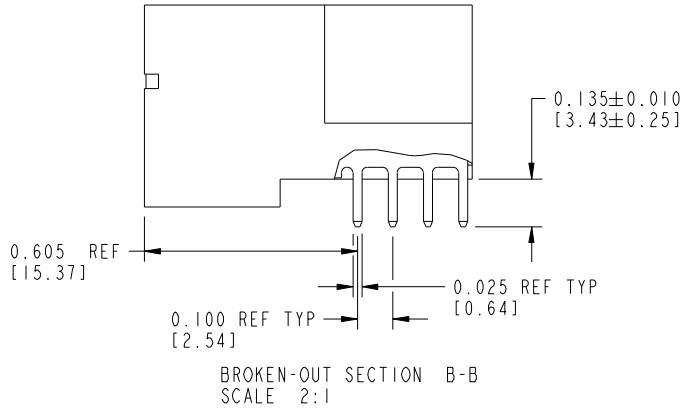
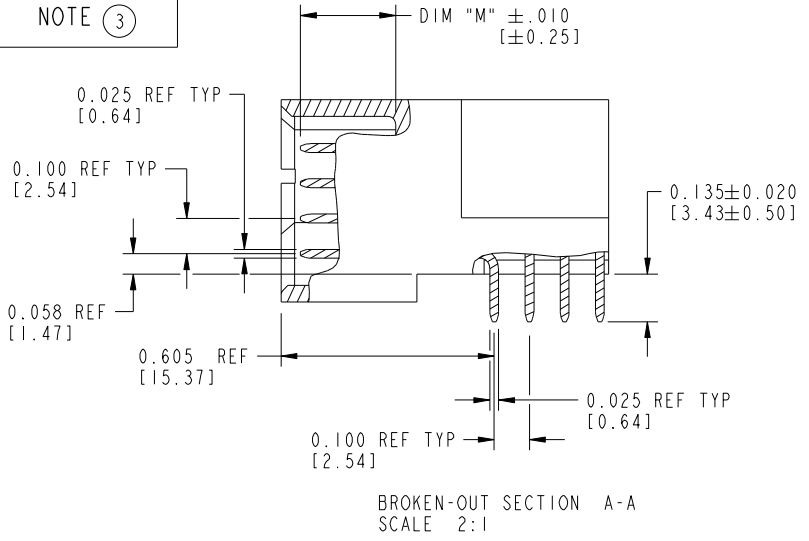
mat'l code				SEE NOTE 2		tolerances unless otherwise specified		CUSTOMER		FCI	
ltr	ecn no.	dr	date	linear	.XX±.01/0.X±0.3	projection	COPY	www.fciconnect.com			
A	DG07-0330	SH	08/15/07	angles	.XXX±.005/0.XX±0.13	INCH/MM	title	6P + 24S			
				dr	.XXX±.0020/0.XXX±0.051	scale	RIGHT ANGLE SOLDER HEADER		product family		
				enr	0°±2°	1:1	PwrBlade		code		
				chr	Sincere He 08/15/07	A		51732-043		213	
				appd	Sincere He 08/15/07	sheet		1 of 4			
					Gary Hsieh 08/15/07	cage code		22526			
					Joseph Hsia 08/15/07						
sheet index	revision sheet	A	A	A	A						
		1	2	3	4						

Pro/E 3 cage code 22526 4

Tous droits strictement réservés. Reproduction ou communication à des tiers interdite sous quelque forme que ce soit sans autorisation écrite du propriétaire. Propriété de c.FCI. Droits de reproduction FCI.

All rights strictly reserved. Reproduction or issue to third parties in any form whatever is not permitted without written authority from the proprietor. Property of FCI. Copyright FCI.

PRODUCT NUMBER  
51732-043--  
NOTE ③



mat'l code		SEE NOTE 2		tolerances unless otherwise specified		CUSTOMER		FCI	
ltr	ecn no.	dr	date	linear	.XX±.01/0.X±0.3	COPY		www.fciconnect.com	
A					.XXX±.005/0.XX±0.13	projection		title	
				angles	.XXX±.0020/0.XXX±0.051	INCH/MM		6P + 24S	
				dr	0°±2°	scale		RIGHT ANGLE SOLDER HEADER	
				enr	Sincere He 08/15/07	1:1		product family	
				chr	Sincere He 08/15/07			PwrBlade	
				appd	Gary Hsieh 08/15/07			code	
					Joseph Hsia 08/15/07			213	
sheet index	revision sheet							size	
								dwg no	
								A 51732-043	
								sheet	
								2 of 4	

Pro/E

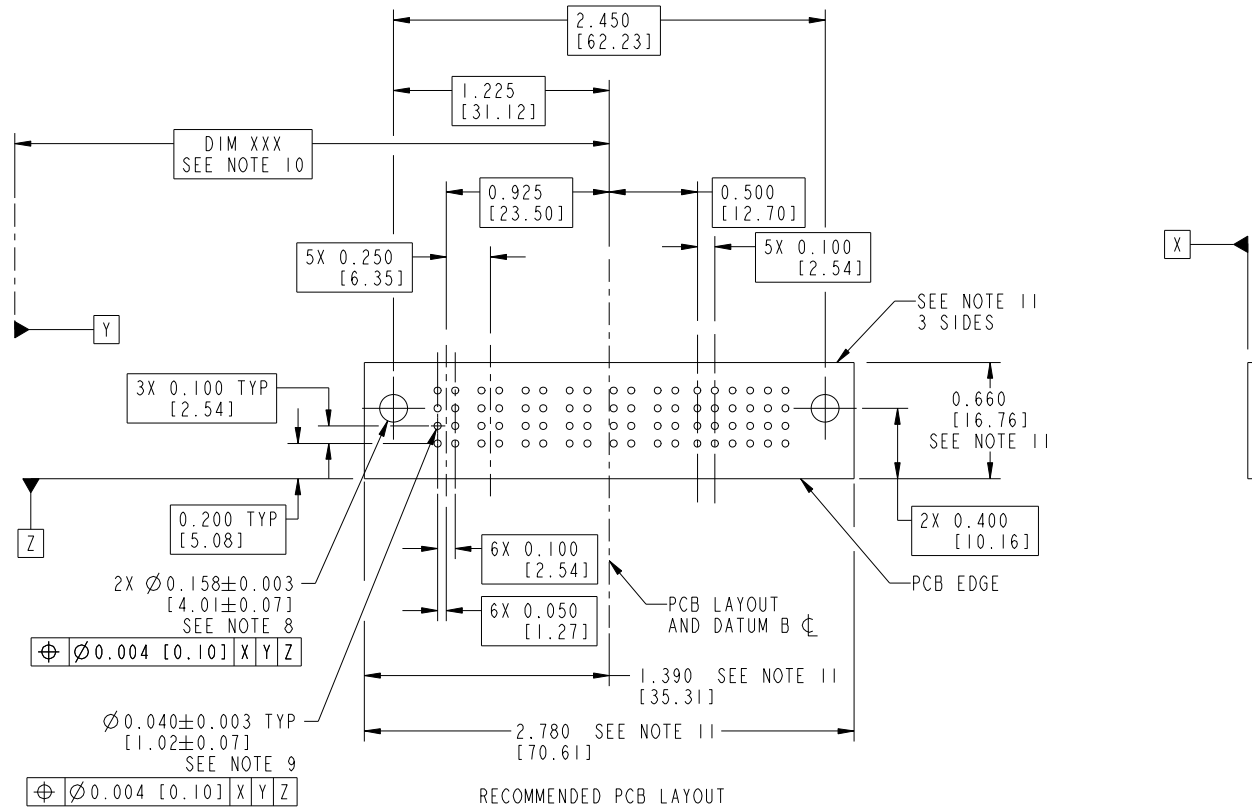
cage code 22526

Tous droits strictement reserves. Reproduction ou communication a des tiers interdite sous quelque forme que ce soit sans autorisation écrite du propriétaire. Propriete de c FCI. Droits de reproduction FCI.



All rights strictly reserved. Reproduction or issue to third parties in any form whatever is not permitted without written authority from the proprietor. Property of FCI. Copyright FCI.

PRODUCT NUMBER  
51732-043--  
NOTE ③



2X  $\varnothing 0.158 \pm 0.003$   
[4.01 ± 0.07]  
SEE NOTE 8  
 $\varnothing 0.004$  [0.10] X|Y|Z

$\varnothing 0.040 \pm 0.003$  TYP  
[1.02 ± 0.07]  
SEE NOTE 9  
 $\varnothing 0.004$  [0.10] X|Y|Z

mat'l code		SEE NOTE 2		tolerances unless otherwise specified		CUSTOMER		FCI		www.fciconnect.com	
ltr	ecn no.	dr	date	linear	.XX±.01/0.X±0.3	projection	COPY	title			
A					.XXX±.005/0.XX±0.13	INCH/MM		6P + 24S			
				angles	.XXX±.0020/0.XXX±0.051	scale		RIGHT ANGLE SOLDER HEADER			
				dr	0°±2°	1:1		product family		PwrBlade	code
				enr	Sincere He 08/15/07			size	dwg no		213
				chr	Sincere He 08/15/07			51732-043			sheet
				appd	Gary Hsieh 08/15/07						3 of 4
					Joseph Hsia 08/15/07						
sheet index	revision sheet										

RECOMMENDED PCB LAYOUT

1 | 2 | 3 | 4

A | A

B | B

Pro/E | cage code 22526

Tous droits strictement reserves. Reproduction ou communication a des tiers interdite sous quelque forme que ce soit sans autorisation écrite du propriétaire. Propriete de c FCI. Droits de reproduction FCI.

All rights strictly reserved. Reproduction or issue to third parties in any form whatever is not permitted without written authority from the proprietor. Property of FCI. Copyright FCI.

PRODUCT NUMBER  
51732-043\_-  
NOTE ③

NOTES:

1. DIMENSIONS AND TOLERANCES ARE IN ACCORDANCE WITH ASME Y14.5M, 1994 UNLESS OTHERWISE SPECIFIED.  
CONNECTOR NOTES:

②. HOUSING MATERIAL: UL 94 V-0 GLASS FILLED HIGH-TEMP THERMOPLASTIC  
POWER CONTACT MATERIAL: COPPER ALLOY  
SIGNAL PIN MATERIAL: COPPER ALLOY

3. PLATING:  
51732-043 Signal Pin: 30u"/0.76um Au OVER 50u"/1.27um Ni ON THE CONTACT AREA.  
AND 100u"/2.54um SnPb PLATING OVER 50u"/1.27um Ni ON THE TERMINATION SECTION.  
Power Pin: 30u"/0.76um Au OVER 50u"/1.27um Ni ON THE CONTACT AREA,  
AND 100u"/2.54um SnPb PLATING OVER 50u"/1.27um Ni ON THE TERMINATION SECTION.  
51732-043LF Signal Pin: 30u"/0.76um Au OVER 50u"/1.27um Ni ON THE CONTACT AREA.  
AND 78u"/2.00um Sn PLATING OVER 50u"/1.27um Ni ON THE TERMINATION SECTION.  
Power Pin: 30u"/0.76um Au OVER 50u"/1.27um Ni ON THE CONTACT AREA,  
AND 78u"/2.00um Sn PLATING OVER 50u"/1.27um Ni ON THE TERMINATION SECTION.

PART NUMBER 51732-043LF MEETS EUROPEAN UNION DIRECTIVE AND OTHER COUNTRY REGULATIONS AS DESCRIBED IN GS-22-008.

THE HOUSING WILL WITHSTAND EXPOSURE TO 260° PEAK TEMPERATURE FOR 10 SECONDS IN A WAVE SOLDER APPLICATION WITH A CIRCUIT BOARD.

④. MANUFACTURER'S NAME, P/N, AND DATE CODE TO APPEAR ON THIS SURFACE.  
5. PRODUCT SPECIFICATION GS-12-149.  
APPLICATION SPECIFICATION BUS-20-067.  
6. PACKAGED IN TRAYS.

PCB NOTES:

7. ALL HOLE DIAMETERS ARE FINISHED HOLE SIZE.  
⑧. MOUNTING HOLES, WHERE APPLICABLE, ARE UNPLATED.  
⑨.  $\varnothing.0453 \pm .0010$  [1.151 ± 0.025] DRILLED HOLES PLATED WITH .0003 [0.008] MIN SnPb or Sn OVER .001 [0.03] TO .003 [0.08] Cu PLATING TO ACHIEVE  $\varnothing.040 \pm .003$  [1.02 ± .07] HOLE.  
⑩. "DIM XXX" TO BE DETERMINED BY THE CUSTOMER.  
⑪. CONNECTOR KEEP-OUT ZONE.

mat'l code		SEE NOTE 2		tolerances unless otherwise specified		CUSTOMER		FCI		www.ficconnect.com		
ltr	ecn no.	dr	date	linear	.XX±.01/0.X±0.3	COPY		projection		title		
A					.XXX±.005/0.XX±0.13			RIGHT ANGLE		6P + 24S		
				angles	.XXX±.002/0.XXX±0.051	INCH/MM		product family		code		
				dr	0° ± 2°	scale		PwrBlade		213		
				enr	Sincere He 08/15/07	1:1		size		sheet		
				chr	Sincere He 08/15/07			dwg no		4 of 4		
				appd	Gary Hsieh 08/15/07			A		51732-043		
					Joseph Hsia 08/15/07							
sheet index	revision sheet											

cage code 22526

Pro/E