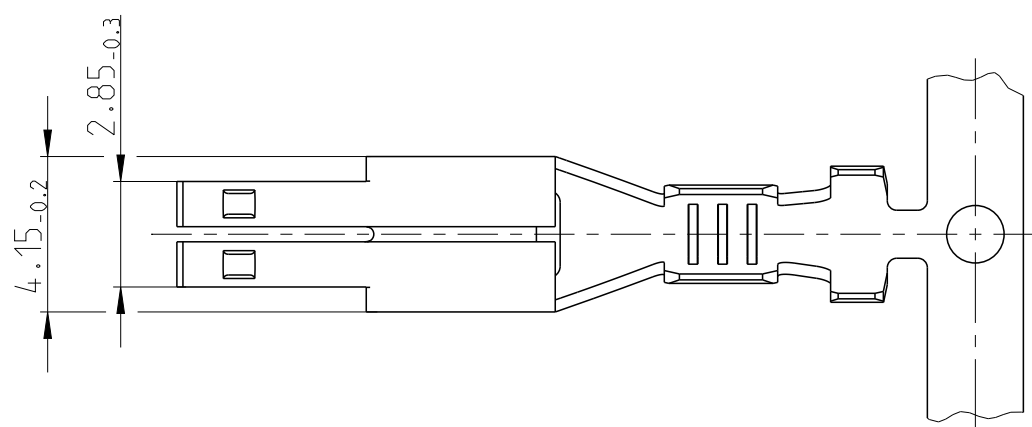
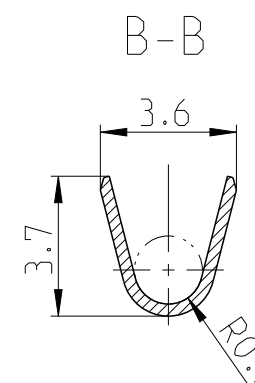
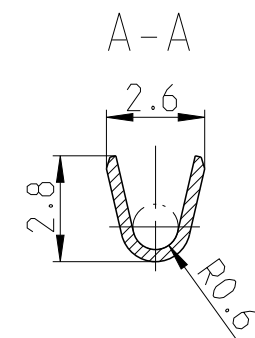
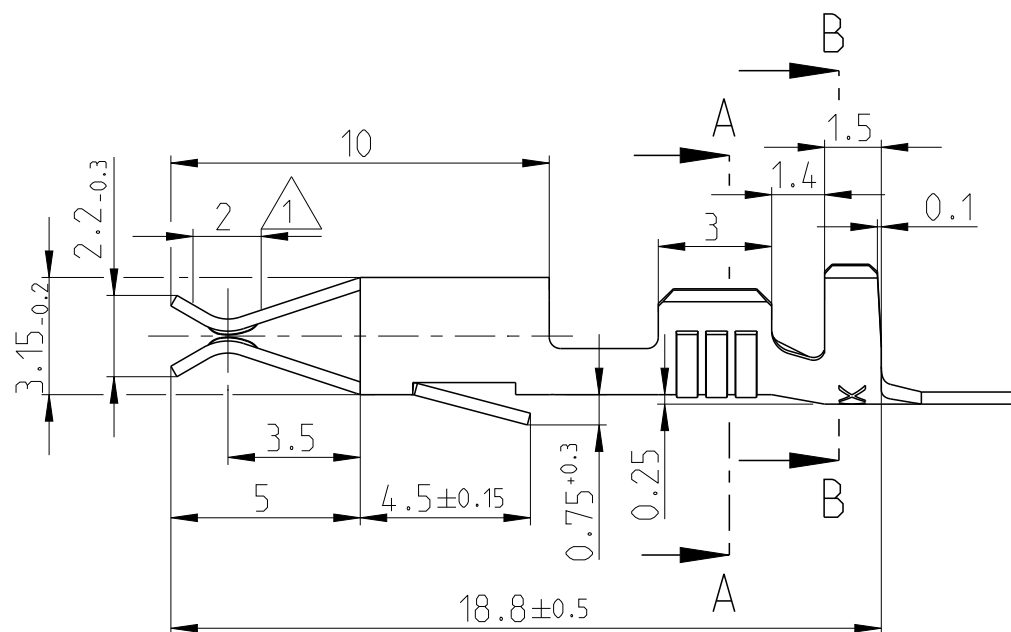


LOC
A1

DIST
-

REVISIONS

P	LTR	DESCRIPTION	DATE	DWN	APVD
F2		REVISED BY ECO-11-005294	06APR2011	HMR	-
F3		New CAD drawing created.	20JUN2013	Kirs.	Eder
F4		ECR-15-012070	13AUG2015	JB JH	BK
F5		E-22-140044	23MAY2022	SH	SK



1 IN CRIMP AREA TIN PLATED
Im Crimpbereich verzinkt

2 CONTACT BODY: PRE SILVER min. 0.8 μm
CONTACT AREA: PRE SILVER min. 3 μm
Kontaktkoerper: vorversilbert min. 0.8 μm
Kontaktzone: vorversilvert min. 3 μm

F5

DISCONTINUED	PRE SILVER	CuSn4 H04	927845-5	E
	SELECTIVE GOLD	CuZn30	927845-4	E
	PRE TIN	CuSn4 H04	927845-3	E
	PRE TIN	CuSn4 H04	927845-2	E
	PRE TIN	CuZn30	927845-1	E
FINISH	MATERIAL	STRIP PART	REV	

CONDUCTOR CROSS-SECTION IN mm ² Leitungsquerschnitt in mm ²		0.35	0.50	0.75	1.00	1.50	2.00
SINGLE CONNECTION Einzelanschlag		X	X				
0.35		X	X				
0.50	X	X	X				
0.75	X						
1.00	X						
1.50							
2.00							

WIRE SIZE RANGE: 0.5-1.0mm²
Drahtgroessenbereich: 0.5-1.0mm²

CRIMPING CONDUCTOR: FLKY WIRE
CONDUCTOR: F-CRIMP
INSULATION: OVERLAPPING CRIMP

angeschlagener Leiter: FLKY Leitung
Leiter: F-Crimp
Isolation: Ueberlappungscrimp

THIS DRAWING IS A CONTROLLED DOCUMENT.		DWN Herth	17 JUL 1984
DIMENSIONS: mm		CHK Herth	17 JUL 1984
TOLERANCES UNLESS OTHERWISE SPECIFIED:		APVD C.Goepfel	20 JUN 2013
		PRODUCT SPEC	-
		APPLICATION SPEC	-
MATERIAL		WEIGHT	-
FINISH		Customer Drawing	SCALE 5:1

DWN Herth		17 JUL 1984		TE Connectivity	
CHK Herth		17 JUL 1984			
APVD C.Goepfel		20 JUN 2013		NAME JUNIOR-TIMER CONTACT Junior-Timer Kontakt	
PRODUCT SPEC		-		RESTRICTED TO	
APPLICATION SPEC		-		-	
WEIGHT		-		SIZE A3	CAGE CODE 00779
MATERIAL		-		DRAWING NO 927845	REV F5
FINISH		-		SHEET 1 OF 1	