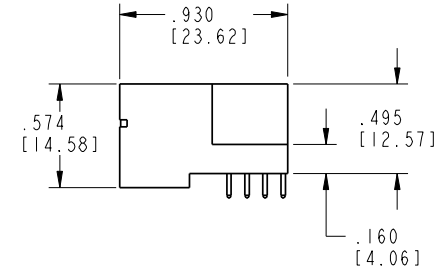
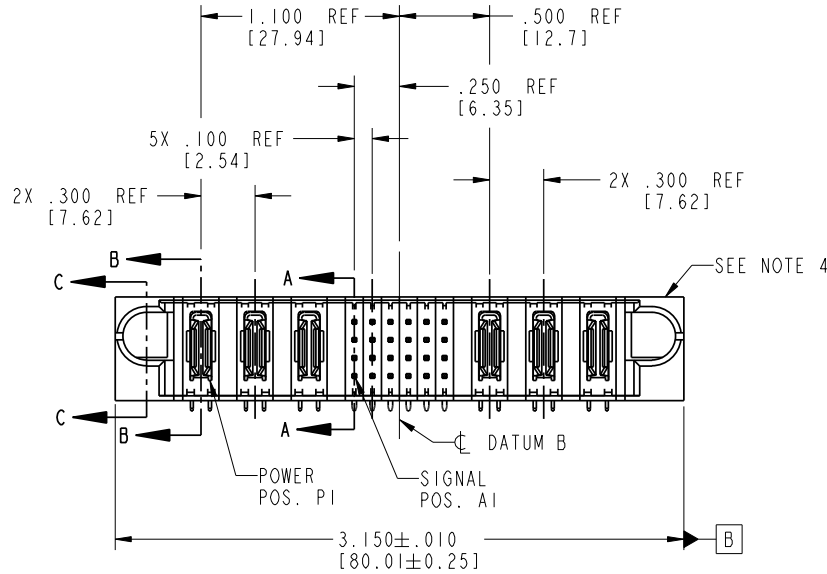
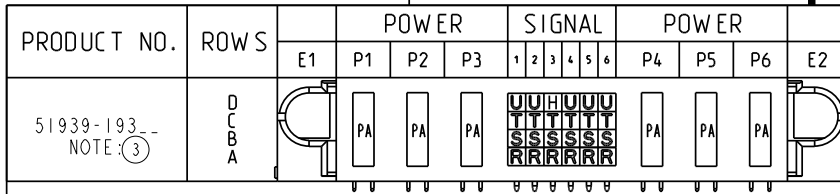


Tous droits strictement réservés. Reproduction ou communication à des tiers interdite sous quelque forme que ce soit sans autorisation écrite du propriétaire. Propriété de c FCI. Droits de reproduction FCI.

FCI

All rights strictly reserved. Reproduction or issue to third parties in any form without written authority from the proprietor. Property of FCI. Copyright FCI.



CODE	DIM "M" MATING LENGTH	CONTACT TYPE
U	.270 [6.86]	SIGNAL
T	.270 [6.86]	SIGNAL
S	.270 [6.86]	SIGNAL
R	.270 [6.86]	SIGNAL
H	.220 [5.59]	SIGNAL
PA	N/A [N/A]	POWER

mat'l code				SEE NOTE 2		tolerances unless otherwise specified		CUSTOMER	
lir	ecn no.	dr	date	linear	angles	.XX±.01/0.X±0.3		COPY	
A	DG05-0128	GuoJM	05/25/05			.XXX±.005/0.XX±0.13		projection	
B	DG06-0001	RYAN	01/06/06			.XXX±.0020/0.XXX±0.051		INCH/MM	
				dr	engr	0°±2°		scale	
				chr	appd			1:1	
				STEVEN WANG	JOSEPH HSIA	05/25/05			
				STEVEN WANG		05/25/05			
				VICTOR LIN		05/25/05			
						05/25/05			
sheet index	revision	B	B	B	B				
	sheet	1	2	3	4				

FCI		www.fciconnect.com	
title		3ACP + 24S + 3ACP	
RIGHT ANGLE SOLDER HEADER		product family VICTOR LIN	
size		dwg no	
A		51939-193	
code		213	
sheet		1 of 4	

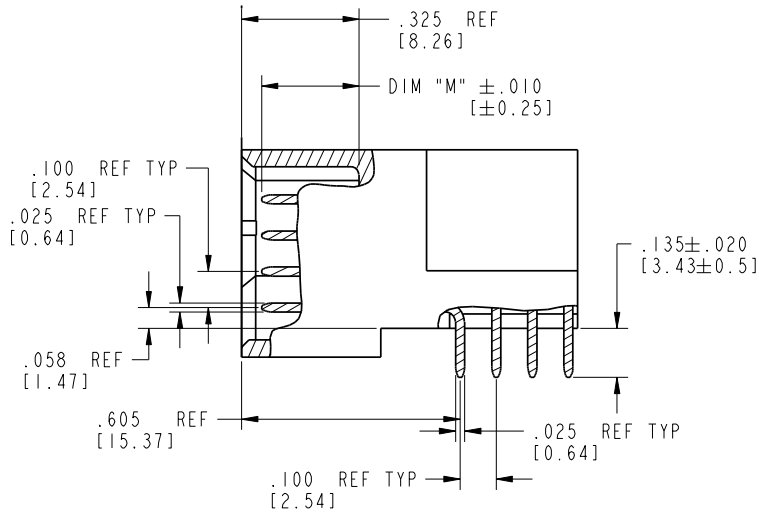
cage code 22526

Pro/E

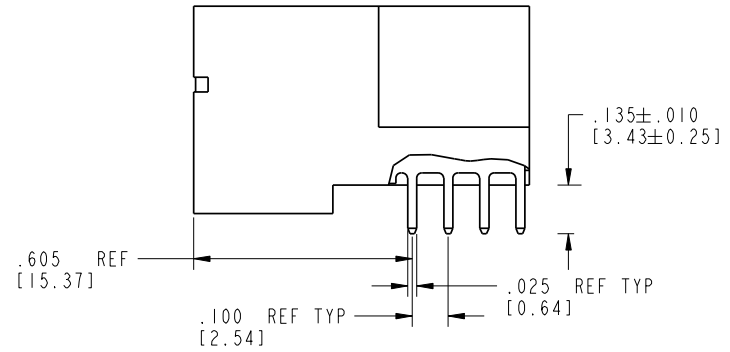
Tous droits strictement réservés. Reproduction ou communication à des tiers interdite sans quelque forme que ce soit sans autorisation écrite du propriétaire. Propriété de c FCI. Droits de reproduction FCI.

All rights strictly reserved. Reproduction or issue to third parties in any form whatsoever is not permitted without written authority from the proprietor. Property of FCI. Copyright FCI.

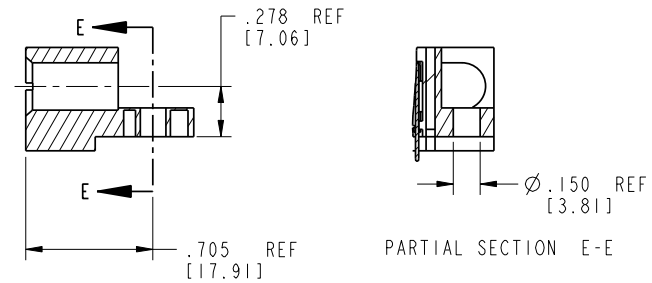
PRODUCT NUMBER
51939-193--
NOTE: (3)



BROKEN-OUT SECTION A-A
SCALE 2:1



BROKEN-OUT SECTION B-B
SCALE 2:1



SECTION C-C

PARTIAL SECTION E-E

mat'l code				SEE NOTE 2	tolerances unless otherwise specified		CUSTOMER		 www.fciconnect.com	
lir	ecr no.	dr	date	linear	.XX±.01/0.X±0.3	COPY		projection		title
B					.XXX±.005/0.XX±0.13					3ACP + 24S + 3ACP
				angles	.XXX±.002/0.XXX±0.051					RIGHT ANGLE SOLDER HEADER
				dr	0°±2°	STEVEN WANG 05/25/05		INCH/MM		product family
				enrg		STEVEN WANG 05/25/05		scale		VICTOR LIN
				chr		VICTOR LIN 05/25/05		1:1		code
				appd		JOSEPH HSIA 05/25/05				213
sheet index		revision sheet								size
										dwg no
										51939-193
										sheet
										2 of 4

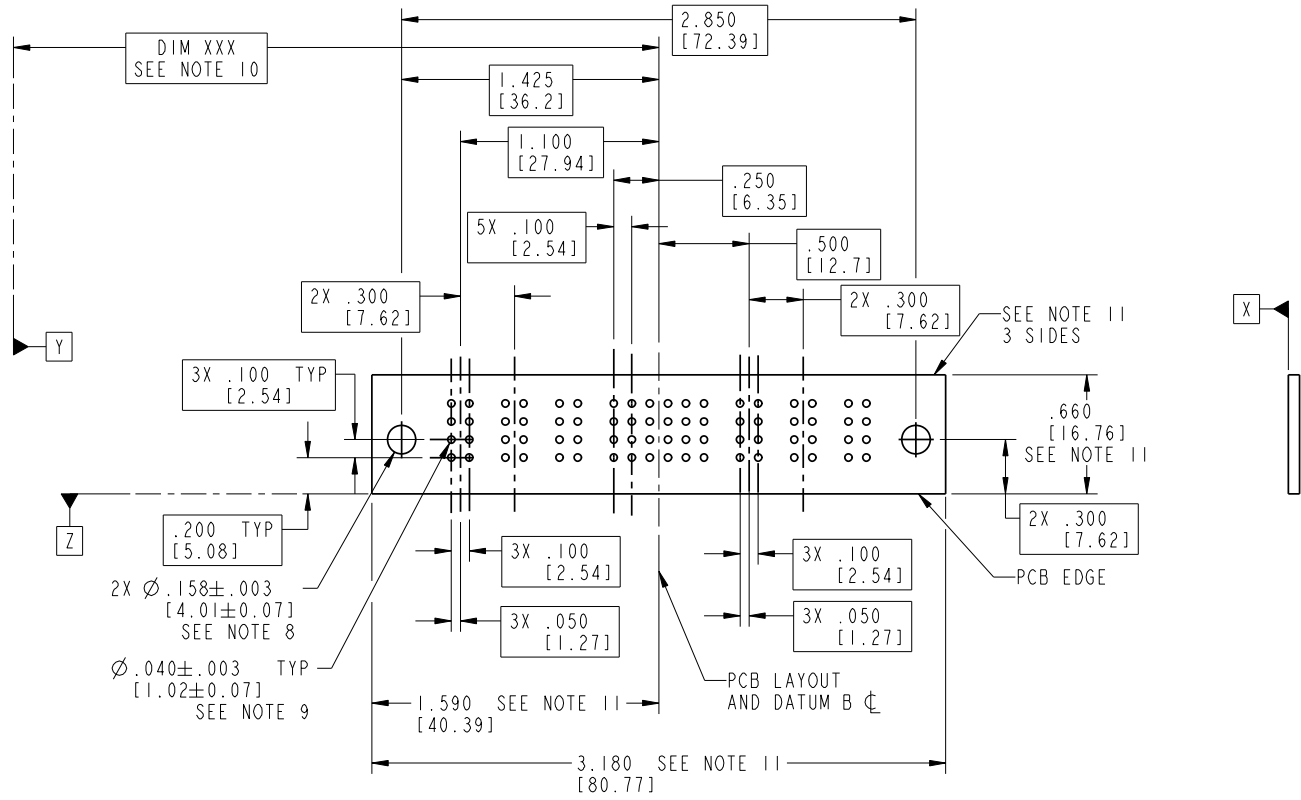
cage code 22526

Pro/E

Tous droits strictement réservés. Reproduction ou communication à des tiers interdite sans quelque forme que ce soit sans autorisation écrite du propriétaire. Propriété de c FCI. Droits de reproduction FCI.

All rights strictly reserved. Reproduction or issue to third parties in any form without written authority from the proprietor. Property of FCI. Copyright FCI.

PRODUCT NUMBER
51939-193--
NOTE: ③



RECOMMENDED PCB LAYOUT

mat'l code		SEE NOTE 2		tolerances unless otherwise specified		CUSTOMER		 www.fciconnect.com	
lfr	ecr no.	dr	date	linear	.XX±.01/0.X±0.3	COPY			
B				linear	.XXX±.005/0.XX±0.13	projection		 title 3ACP + 24S + 3ACP RIGHT ANGLE SOLDER HEADER	
				angles	.XXX±.002/0.XXX±0.051	INCH/MM			
				dr	STEVEN WANG 05/25/05	scale		product family VICTOR LIN	
				enrg	STEVEN WANG 05/25/05	1:1		code 213	
				chr	VICTOR LIN 05/25/05			size dwg no	
				appd	JOSEPH HSIA 05/25/05			51939-193	
sheet index	revision sheet							sheet 3 of 4	

cage code 22526

Tous droits strictement reserves. Reproduction ou communication a des tiers interdite sous quelque forme que ce soit sans autorisation écrite du propriétaire. Propriete de c FCI. Droits de reproduction FCI.

A
FCI

All rights strictly reserved. Reproduction or issue to third parties in any form without is not permitted without written authority from the proprietor. Property of FCI. Copyright FCI.

B

1 | 2

3 |

4

PRODUCT NUMBER

51939-193__
NOTE: (3)

NOTES:

1. DIMENSIONS AND TOLERANCES ARE IN ACCORDANCE WITH ASME Y14.5M, 1994 UNLESS OTHERWISE SPECIFIED.

CONNECTOR NOTES:

(2) HOUSING MATERIAL: UL 94 V-0 GLASS FILLED HIGH-TEMP THERMOPLASTIC

POWER CONTACT MATERIAL: COPPER ALLOY
SIGNAL PIN MATERIAL: COPPER ALLOY

3. PLATING:

51939-193: SIGNAL PIN: 30u"/0.76um Au OVER 50u"/1.27um Ni ON THE CONTACT AREA
AND 100u"/2.54um SnPb OVER 50u"/1.27um Ni ON THE TERMINATION AREA
POWER PIN: 30u"/0.76um Au OVER 50u"/1.27um Ni ON THE CONTACT AREA
AND 100u"/2.54um SnPb OVER 50u"/1.27um Ni ON THE TERMINATION AREA

51939-193LF: SIGNAL PIN: 30u"/0.76um Au OVER 50u"/1.27um Ni ON THE CONTACT AREA
AND 78u"/2.00um Sn OVER 50u"/1.27um Ni ON THE TERMINATION AREA
POWER PIN: 30u"/0.76um Au OVER 50u"/1.27um Ni ON THE CONTACT AREA
AND 78u"/2.00um Sn OVER 50u"/1.27um Ni ON THE TERMINATION AREA

PART NUMBER 51939-193LF MEETS EUROPEAN UNION DIRECTIVE AND OTHER COUNTRY REGULATIONS AS DESCRIBED IN GS-22-008.

THE HOUSING WILL WITHSTAND EXPOSURE TO 260° PEAK TEMPERATURE FOR 10 SECONDS IN A WAVE SOLDER APPLICATION WITH A CIRCUIT BOARD.

(4) MANUFACTURER'S NAME, P/N, AND DATE CODE TO APPEAR ON THIS SURFACE.

5. PRODUCT SPECIFICATION GS-12-149.
APPLICATION SPECIFICATION BUS-20-067.

6. PACKAGED IN TRAYS.

PCB NOTES:

7. ALL HOLE DIAMETERS ARE FINISHED HOLE SIZE.

(8) MOUNTING HOLES, WHERE APPLICABLE, ARE UNPLATED.

(9) $\varnothing .0453 \pm .0010$ [1.151 \pm 0.025] DRILLED HOLES PLATED WITH
.0003 [0.008] MIN SnPb OVER .001 [0.03]
TO .003 [0.08] Cu PLATING TO ACHIEVE
 $\varnothing .040 \pm .003$ [1.02 \pm .07] HOLE.

(10) "DIM XXX" TO BE DETERMINED BY THE CUSTOMER.

(11) CONNECTOR KEEP-OUT ZONE.

mat'l code		SEE NOTE 2		tolerances unless otherwise specified		CUSTOMER		A FCI		www.fciconnect.com	
lfr	ecr no.	dr	date	linear	.XX±.01/0.X±0.3	COPY		projection	title 3ACP + 24S + 3ACP		
B					.XXX±.005/0.XX±0.13				RIGHT ANGLE SOLDER HEADER		
				angles	.XXX±.002/0.XXX±0.051				product family	VICTOR LIN	code
				dr	0° ± 2°	INCH/MM		size	dwg no	sheet	
				enrg	STEVEN WANG 05/25/05	scale		A	51939-193	4 of 4	
				chr	VICTOR LIN 05/25/05						
				appd	JOSEPH HSIA 05/25/05						
sheet index	revision sheet										

A

B

1 | 2

Pro/E

3 |

code code 22526

4